



**PUBERT®**  
— since 1840 —

**C A T A L O G U E      2 0 1 8**

- Snow thrower**
- Micro tiller**
- Tiller / Cultivator**
- Wheeled brushcutter**
- Shredder**
- Scarifier**
- Logging saw benches**





SUMMARY

P 3 Pubert is the worldwide leader in tiller manufacturing

**Maintenance of vegetable gardens**

P 5 Micro tiller

P 6-7 Nano / Tillence

P 8-9 Compact / Meso

P 10-11 Eco / Terro

P 12-13 Ecomax + Easy Go version

P 14-15 Elite / Aro

P 16-17 Aro Pro / Tiller accessories

P 18-19 Convertible tiller : Vario cable

P 20-21 Vario pneumatic clutch / Quatro Junior

P 22-23 Quatro Senior / Roto 400

P 24-25 Roto 507 / Convertible tiller accessories

**Mowing and clearing**

P 27 First

P 28-29 Xplorer / Xtrem

P 30-31 Xtrem (mountain) / L Junior

P 32-33 L Senior / Motor mower & Roto mower

**Lawn upkeep**

P 35 Scarifier Cesar

P 36-37 Scarifier Oscar / Oscar Pro

**Woodcutting and branch shredding**

P 39 Logging saw benches

P 40-41 Shredders

**Snow removal**

P 42-45 Valto

P 46-47 **Inside the machine**

P 48-50 **Innovation**



# Pubert is the worldwide leader in tiller manufacturing

## Manufacturing yardwork and gardening tools: Pubert's history

Pubert is a family owned Company that was created in 1840 in Vendée and was producing ploughs. In 1960, the company started production of accessories for home gardening. In 1976, it was birth of the first Pubert tiller. And in 1987, Pubert made a ploughing endurance world record to prove the good quality of its products: non-stop 24 hours. It is in the Guinness Book.



## Innovation coming from 150 years of experience and know-how

Pubert is today number one in the world thanks to its long experience in soil preparation for gardening. Through years, the company has integrated new technologies to produce more efficient, easier to use, stronger and with competitive prices machines. An important part of its turnover is dedicated to the Research & Development of new technologies. Every year, the company applies for many patents, brands and models. Thus, the tiller range has battery tillers, very quiet, to answer new needs, especially to respect environment. Pubert know-how is made of its machines but also and mainly of men and women from this company from Vendée. At all production levels, well done work is important.



## KEY DATES

### 1997

Pubert company launches the first tiller with pneumatic control that gives an unmatched comfort use. «Safety trophy» at URBAVERT-URBATEC exhibition in 2000 rewards the efforts made.

### 2003-2011

Pubert grasped opportunities of extension and external growth by acquiring companies (Kiva and Roques & Lecoeur).

### 2004

Turnover knows a strong progress thanks to international development.

### 2007

The oldest industrial company from Vendée becomes the first worldwide tiller manufacturer with 135 000 units produced per year.

### 2008

Production goes over 150 000 units and turnover is close to 60 million euros.

### 2009 - 2010

The company creates the first battery tiller and shredders complete the range of Pubert home gardening products.

### 2012

Pubert launches VARIO model, the first tiller with variable speed. Whatever the use (tilling or ploughing), speed rotation can change from 28 to 165 rpm.

### 2013

Pubert starts settling the Lean Manufacturing to « standardize diversity » of its products. The aim is to manufacture quality machines in a flexible organization remaining competitive.

### 2014

After 4 years of development and engineering, Pubert had success in showing to his French and foreign customers, in Val Thorens (France), his new range of snow throwers.

### 2015

Pubert launches ARO, a new tiller with 2 front gears and 1 reverse gear. Reliability, great robustness, and best quality/price.

### 2016-2017

Pubert launches a new range of logging saw benches and gets the status of « Approved Exporter ».



## 2016 PUBERT PRESENCE AT THE EIMA INTERNATIONAL EXHIBITION



Pubert was present at the International exhibition of gardening and agricultural equipment (EIMA), in Bologna, Italy. The Pubert team was glad to show its full range of cultivators, tillers, wheeled brushcutters, scarifiers, snow throwers, shredders...

The tiller ARO 2 + 1 was introduced as the unique model in the market through its alliance "power-compactness". At the same occasion, on the area "Wood and Forest", the shredder IROKO and a new range of saw benches was presented as well.

# Maintenance of vegetable gardens



## TILLERS



# Light Tiller : Micro tiller MB 25H



## Features

- > Easiness of starting and low sound level of the engine
- > Remote switch-button
- > Foldable handlebar or totally dismantable : easy to transport in the car trunk
- > Patented transmission : high-tech composite with wheel and endless screw in oil bath
- > Centrifugal clutch
- > 4 monobloc forged steel tines (straight riveted blades)
- > Transmission shaft  $\varnothing$  15 mm

## Technical information

Recommended area	Between lines hoeing and garden maintenance
Working width	28 cm
Gears	1 forward (180 rpm)
Working tools	4 tines $\varnothing$ 225 mm
Weight	12 kg
Engine	Honda GX25 4 stroke cycle OHC
Displacement	25 cc
Net power <sup>1</sup>	0,6 KW to 6500 rpm
Nominal power	0,6 KW to 6500 rpm
Fuel tank capacity	0,55 L
Oil tank capacity	0,08 L

## Practical information

Packaging	Unit box
Box dimensions (Lxhxh)	380 x 370 x 560 mm
Quantity per pallet	24
Pallet dimensions (Lxhxh)	1150 x 770 x 2330 mm
Product code	<b>7000020301</b>
Gen code	3700304805079

For accessories or options please contact us or visit our website [www.pubert.com](http://www.pubert.com)

<sup>1</sup> The Engine power output indicated in this document is a net value measured by testing a motor according to the SAEJ1349 norm at a given engine evolution speed. The power of another motor may be different from the indicated value. The true power of a motor depends on several factors such as engine evolution speed, temperature, humidity, atmospheric pressure, maintenance and others.

More  
information about  
versatile micro  
tiller



# Light Tiller : Nano NANO 20R



### Features

- > 6 dismantable forged tines (straight riveted knives)
- > Foldable and height adjustable handlebar
- > Transmission by chain, dismantable and greased
- > Versatile tiller which can be used with accessories
- > Belt tension clutch
- > Transmission shaft Ø 20 mm
- > Double rear transport wheel

### Technical information

Recomended area	< 500m <sup>2</sup>
Working width	20 / 30 / 46 cm
Gears	1 forward (140 rpm)
Working tools	6 tines Ø 240 mm
Weight	26 kg
Engine	Pubert R100
Displacement	98 cc
Net power <sup>1</sup>	1,8 KW to 3600 rpm
Nominal power	1,6 KW to 3200 rpm
Fuel tank capacity	2 L
Oil tank apacity	0,35 L

### Practical information

Packaging	Carton box
Box dimensions (LxIxh)	650 x 460 x 510 mm
Quantity per pallet	16
Pallet dimensions (LxIxh)	1350 x 950 x 2180 mm
Product code	<b>6000020501</b>
Gen code	3700304803068

For accessories or options please contact us or visit our website [www.pubert.com](http://www.pubert.com)

### + Other versions :

Version	Engine	Displacement	Product code
<b>NANO 30K</b>	Kawasaki FJ100	98 cc	<b>6000020504</b>
<b>NANO 40B</b>	Briggs & Stratton 550 Series	127 cc	<b>6000020502</b>

More information about Nano



<sup>1</sup> The Engine power output indicated in this document is a net value measured by testing a motor according to the SAEJ1349 norm at a given engine evolution speed. The power of another motor may be different from the indicated value. The true power of a motor depends on several factors such as engine evolution speed, temperature, humidity, atmospheric pressure, maintenance and others.

# Battery tiller : Tillence TILLENCE BLACK AND RED



## Features

- > Quiet and environmentally friendly tiller.
- > Easy to use thanks to its height adjustable and foldable handlebar for a better storage.
- > Versatile machine, which can be fitted with many accessories.
- > Works in silence, can be used at any time in a residential area.
- > Using comfort thanks to its ergonomic handles (« soft grips ») and it controls easy to reach (on/off button).
- > Tiller without any maintenance ; managed by a smart electronic card.
- > Use of the reverse gear with only one button.
- > A LED indicator informs you about the state of the machine and its battery level.

## Technical information

Recomended area	< 300 m <sup>2</sup>
Working width	20 / 30 / 46 cm
Gears	2 forward 45 and 160 rpm 2 reverse 22 and 75 rpm
Working tools	6 tines Ø 240 mm
Weight	32 kg
Engine	Electric 800 W
Battery	36 V - 12H
Autonomy	20 to 45 min
Charging time	2h30 for 85% or 8h for 100%

## Practical information

Packaging	Carton box
Box dimensions (LxHxh)	500 x 400 x 740 mm
Quantity per pallet	18
Pallet dimensions (LxHxh)	1000 x 1200 x 2320 mm
Product code	<b>6500020203</b>
Gen Code	3700304810400

For accessories or options please contact us or visit our website [www.pubert.com](http://www.pubert.com)

<sup>1</sup> The Engine power output indicated in this document is a net value measured by testing a motor according to the SAEJ1349 norm at a given engine evolution speed. The power of another motor may be different from the indicated value. The true power of a motor depends on several factors such as engine evolution speed, temperature, humidity, atmospheric pressure, maintenance and others.

More  
information about  
Tillence



# Light Tiller : Compact COMPACT 45P C



## Features

- > 4 dismantable tines  
(standard knives) Ø 320 mm + discs
- > Foldable and height adjustable handlebar
- > Transmission by chain, dismantable and greased
- > Waterproof seals on transmission shaft Ø 25 mm
- > Belt tension clutch
- > Spur
- > Foldable front wheel

## Technical information

Recommended area	< 1000 m <sup>2</sup>
Working width	40 - 60 cm
Gears	1 forward (120 rpm)
Working tools	4 tines Ø 320 mm
Weight	46 kg
Engine	Pubert R180
Displacement	179 cc
Net power <sup>1</sup>	3,5 KW to 3600 rpm
Nominal power	3,3 KW to 3300 rpm
Fuel tank capacity	3,6 L
Oil tank apacity	0,6 L

## Practical information

Packaging	Carton box
Box dimensions (Lxlxh)	710 x 400 x 690 mm
Quantity per pallet	12
Pallet dimensions (Lxlxh)	800 x 1450 x 2300 mm
Product code	<b>3000201706</b>

For accessories or options please contact us  
or visit our website [www.pubert.com](http://www.pubert.com)

<sup>1</sup> The Engine power output indicated in this document is a net value measured by testing a motor according to the SAEJ1349 norm at a given engine evolution speed. The power of another motor may be different from the indicated value. The true power of a motor depends on several factors such as engine evolution speed, temperature, humidity, atmospheric pressure, maintenance and others.

## + Other versions :

Version	Engine	Displacement	Product code
<b>COMPACT 40B C</b>	Briggs & Stratton 550 Series	127 cc	<b>3000201704</b>

More  
information  
about Compact





# Light Tiller : Meso

## MESO 35P C2



### Features

- > 4 dismantable tines (standard and forged knives) Ø 285 mm + discs
- > Adjustable height and lateral handlebar
- > Mechanical reverse gear with inversion control on handlebar
- > Wide steel tines cover plates
- > Transmission by chain, dismantable and greased
- > Waterproof seals on transmission shaft Ø 20 mm
- > Belt tension clutch
- > Spur
- > Foldable front wheel

### Technical information

Recomended area	< 500 m <sup>2</sup>
Working width	55 cm
Gears	1 forward (115 rpm) 1 reverse
Working tools	4 tines Ø 285 mm
Weight	39 kg
Engine	Pubert R100
Displacement	98 cc
Net power <sup>1</sup>	1,8 KW to 3600 rpm
Nominal power	1,5 KW to 3200 rpm
Fuel tank capacity	2 L
Oil tank apacity	0,35 L

### Practical information

Packaging	Carton box
Box dimensions (LxHxh)	830 x 555 x 600 mm
Quantity per pallet	16
Pallet dimensions (LxHxh)	1150 x 1650 x 2530 mm
Product code	<b>3400020101</b>
Gen code	3700304834017

For accessories or options please contact us or visit our website [www.pubert.com](http://www.pubert.com)

### + Other versions :

Version	Engine	Displacement	Product code
<b>MESO 30B C2</b>	Briggs & Stratton 550 Series	127 cc	<b>3400020102</b>

More  
information  
about Meso



# Tiller : Eco

## ECO 55P C2



### Features

- > 6 dismantable forged tines (straight riveted knives) + discs
- > Adjustable height handlebar
- > Transmission by chain, dismantable and greased
- > Waterproof seals on transmission shaft  $\varnothing$  25mm
- > Mechanical reverse gear with inversion control on handlebar
- > Belt tension clutch
- > Spur
- > Foldable front wheel

### Technical information

Recommended area	< 1000 m <sup>2</sup>
Working width	40 / 60 / 80 cm
Gears	1 forward (120 rpm) 1 reverse
Working tools	6 tines $\varnothing$ 320 mm
Weight	54 kg
Engine	Pubert R210
Displacement	212 cc
Net power <sup>1</sup>	4,2 KW to 3600 rpm
Nominal power	4 KW to 3300 rpm
Fuel tank capacity	3,6 L
Oil tank capacity	0,6 L

### Practical information

Packaging	Carton box
Box dimensions (LxHxh)	830 x 600 x 820 mm
Quantity per pallet	8
Pallet dimensions (LxHxh)	1650 x 1200 x 2630 mm
Product code	<b>3000020708</b>
Gen Code	3700304810592

For accessories or options please contact us or visit our website [www.pubert.com](http://www.pubert.com)

<sup>1</sup> The Engine power output indicated in this document is a net value measured by testing a motor according to the SAEJ1349 norm at a given engine evolution speed. The power of another motor may be different from the indicated value. The true power of a motor depends on several factors such as engine evolution speed, temperature, humidity, atmospheric pressure, maintenance and others.

More  
information  
about Eco





# Tiller : Terro TERRO 45P C2



## Features

- > 4 dismantable tines  
(standard knives) Ø 320 mm + discs
- > Height adjustable handlebar
- > Transmission by chain, dismantable  
and greased for life
- > Waterproof seals on transmission  
shaft Ø 25 mm
- > Belt tension clutch
- > Spur
- > Foldable front wheel

## Technical information

Recomended area	< 1000 m <sup>2</sup>
Working width	40 / 60 cm
Gears	1 forward (120 rpm) 1 reverse
Working tools	4 tines Ø 320 mm
Weight	46 kg
Engine	Pubert R180 BH Oil bath filter
Displacement	179 cc
Net power <sup>1</sup>	3,5 KW to 3600 rpm
Nominal power	3,3 KW to 3300 rpm
Fuel tank capacity	3,5 L
Oil tank apacity	0,6 L

## Practical information

Packaging	Carton box
Box dimensions (Lxhxh)	710 x 400 x 690 mm
Quantity per pallet	12
Pallet dimensions (Lxhxh)	800 x 1450 x 2180 mm
Product code	<b>3000021801</b>
Gen code	3700304810097

For accessories or options please contact us  
or visit our website [www.pubert.com](http://www.pubert.com)

## + Other versions :

Version	Engine	Displacement	Product code
<b>TERRO 65B C2</b>	Briggs & Stratton CR950	208 cc	<b>3000021807</b>
<b>TERRO 40H C2</b>	Honda GP160	163 cc	<b>3000201801</b>

More  
information  
about Terro



<sup>1</sup> The Engine power output indicated in this document is a net value measured by testing a motor according to the SAE1349 norm at a given engine evolution speed. The power of another motor may be different from the indicated value. The true power of a motor depends on several factors such as engine evolution speed, temperature, humidity, atmospheric pressure, maintenance and others.

# Tiller : Ecomax ECOMAX 40H C2



## Features

- > 6 dismantable forged tines (straight riveted knives) + discs
- > Height and offset adjustable handlebar
- > Transmission by chain, dismantable and greased
- > Waterproof seals on transmission shaft Ø 25mm
- > Mechanical reverse gear with inversion control on handlebar
- > Belt tension clutch
- > Spur
- > Foldable front wheel

## Technical information

Recomended area	< 1000 m <sup>2</sup>
Working width	40 / 60 / 80 cm
Gears	1 forward (120 rpm) 1 reverse
Working tools	6 tines Ø 320 mm
Weight	54 kg
Engine	Honda GP160
Displacement	160 cc
Net power <sup>1</sup>	3,6 KW to 3600 rpm
Nominal power	3,4 KW to 3300 rpm
Fuel tank capacity	3,1 L
Oil tank apacity	0,6 L

## Practical information

Packaging	Carton box
Box dimensions (LxHxh)	830 x 600 x 820 mm
Quantity per pallet	12
Pallet dimensions (LxHxh)	1650 x 1200 x 2630 mm
Product code	<b>3000022304</b>
Gen Code	3700304810332

For accessories or options please contact us  
or visit our website [www.pubert.com](http://www.pubert.com)

<sup>1</sup> The Engine power output indicated in this document is a net value measured by testing a motor according to the SAE1349 norm at a given engine evolution speed. The power of another motor may be different from the indicated value. The true power of a motor depends on several factors such as engine evolution speed, temperature, humidity, atmospheric pressure, maintenance and others.

## + Other versions :

Version	Engine	Displacement	Product code
<b>ECOMAX 65B C2</b>	Briggs & Stratton CR950	208 cc	<b>3000022306</b>

More  
information about  
Ecomax



# Tiller : Ecomax «Easy Go» ECOMAX 55P C2 EG



## Features

- > 6 dismountable forged tines (straight riveted knives) + discs
- > Height and offset adjustable handlebar
- > Transmission by chain, dismountable and greased
- > Waterproof seals on transmission shaft  $\varnothing$  25 mm
- > Electric start on the handlebar
- > Mechanical reverse gear
- > Belt tension clutch
- > Spur
- > Foldable front wheel

## Technical information

Recommended area	< 1000 m <sup>2</sup>
Working width	40 / 60 / 80 cm
Gears	1 forward / 1 reverse
Working tools	6 tines $\varnothing$ 320 mm
Weight	55 kg
Engine	R 210 DE
Displacement	212 cc
Net power <sup>1</sup>	4,2 KW to 3600 rpm
Nominal power	4 KW to 3300 rpm
Fuel tank capacity	3,6 L
Oil tank capacity	0,6 L

## Practical information

Packaging	Carton box
Box dimensions (LxHxh)	830 x 600 x 820 mm
Quantity per pallet	12
Pallet dimensions (LxHxh)	1650 x 1200 x 2630 mm
Product code	<b>3000022305</b>
Gen code	3700304810646

For accessories or options please contact us  
or visit our website [www.pubert.com](http://www.pubert.com)

<sup>1</sup> The Engine power output indicated in this document is a net value measured by testing a motor according to the SAEJ1349 norm at a given engine evolution speed. The power of another motor may be different from the indicated value. The true power of a motor depends on several factors such as engine evolution speed, temperature, humidity, atmospheric pressure, maintenance and others.

More  
information about  
Ecomax Easy Go



# Tiller : Elite

## ELITE 55P D2



### Features

- > 6 dismantlable forged tines (helicoïdal riveted knives) + discs
- > Soft pneumatic clutch, enables to increase the belt lifetime, unequalled using comfort
- > Adjustable height and lateral elliptic handlebar
- > Transmission by chain, dismantlable and greased
- > Heavy-duty transmission with double-walled steel housing
- > Waterproof seals on transmission shaft  $\varnothing$  25 mm
- > «Soft grip» handles
- > Mechanical reverse gear with inversion control on handlebar
- > Belt tension clutch
- > Adjustable spur
- > Foldable front wheel

### Technical information

Recommended area	< 2500 m <sup>2</sup>
Working width	40 / 60 / 80 cm
Gears	1 forward (120 rpm) / 1 reverse
Working tools	6 tines $\varnothing$ 320 mm
Weight	57 kg
Engine	Pubert R210 BH
Displacement	212 cc
Net power <sup>1</sup>	4,2 KW to 3600 rpm
Nominal power	4 KW to 3300 rpm
Fuel tank capacity	3,6 L
Oil tank capacity	0,6 L

### Practical information

Packaging	Carton box
Box dimensions (Lxlxh)	830 x 600 x 820 mm
Quantity per pallet	12
Pallet dimensions (Lxlxh)	1650 x 1200 x 2630 mm
Product code	<b>3000022403</b>
Gen code	3700304810684

For accessories or options please contact us or visit our website [www.pubert.com](http://www.pubert.com)

<sup>1</sup> The Engine power output indicated in this document is a net value measured by testing a motor according to the SAEJ1349 norm at a given engine evolution speed. The power of another motor may be different from the indicated value. The true power of a motor depends on several factors such as engine evolution speed, temperature, humidity, atmospheric pressure, maintenance and others.

More  
information  
about Elite





# Tiller : Aro 2+1 ARO 55P C3



## Features

- > 6 monobloc tines, Ø 320 mm (straight, forged and dismantable knives) + discs
- > Gearbox: 2 gears forward + 1 reverse (steel sprockets)
- > New belt tension clutch, with cable set for life
- > Wide steel tines cover plates
- > Foldable, height and lateral adjustable handlebar
- > Waterproof seals on transmission shaft Ø 25 mm
- > Transmission by chain, dismantable and greased
- > Spur
- > Foldable front wheel

## Technical information

Recommended area	< 2500 m <sup>2</sup>
Working width	60 - 80 cm
Gears	2 forward - 1st: 60 to 80 rpm - 2st: 140 to 160 rpm 1 Reverse
Working tools	6 tines Ø 320 mm (4 monobloc tines + 2 additional tines) + discs
Weight	53 kg
Engine	Pubert R210
Displacement	212 cc
Net power <sup>1</sup>	4,2 KW to 3600 rpm
Nominal power	4 KW to 3300 rpm
Fuel tank capacity	3,6 L
Oil tank capacity	0,6 L

## Practical information

Packaging	Carton box
Box dimensions (LxHxh)	830 x 600 x 820 mm
Quantity per pallet	12
Pallet dimensions (LxHxh)	1650 x 1200x 2630 mm
Product code	<b>3000023004</b>
Gen code	3700304810455

For accessories or options please contact us  
or visit our website [www.pubert.com](http://www.pubert.com)

## + Other versions :

Version	Engine	Displacement	Product code
<b>ARO 40H C3</b>	Honda GP160	160 cc	<b>3000023002</b>
<b>ARO 65B C3</b>	Briggs&Stratton CR950	208 cc	<b>3000023007</b>

More  
information  
about Aro





# Tiller : Aro 2+1

## ARO PRO 55P C3



### Features

- > 6 monobloc tines, Ø 320 mm (helicoidal, forged and dismantable knives) + discs
- > Gearbox: 2 gears forward + 1 reverse (steel sprockets)
- > New belt tension clutch, with cable set for life
- > Chassis heavy duty
- > Strengthened transmission with double protection
- > Wide steel tines cover plates
- > Foldable, height and lateral adjustable handlebar
- > Waterproof seals on transmission shaft Ø 25 mm
- > Transmission by chain, dismantable and greased
- > Adjustable Spur
- > Foldable front wheel

### Technical information

Recommended area	< 2500 m <sup>2</sup>
Working width	60 - 85 cm
Gears	2 forward - 1st: 60 to 80 rpm - 2st: 140 to 160 rpm 1 Reverse
Working tools	6 tines Ø 320 mm (4 monobloc tines + 2 additional tines) + discs
Weight	55 kg
Engine	Pubert R210
Displacement	212 cc
Net power <sup>1</sup>	4,2 KW to 3600 rpm
Nominal power	4 KW to 3300 rpm
Fuel tank capacity	3,6 L
Oil tank capacity	0,6 L

### Practical information

Packaging	Carton box
Box dimensions (LxHxh)	830 x 600 x 820 mm
Quantity per pallet	12
Pallet dimensions (LxHxh)	1650 x 1200 x 2630 mm
Product code	<b>3000203502</b>

For accessories or options please contact us or visit our website [www.pubert.com](http://www.pubert.com)

<sup>1</sup> The Engine power output indicated in this document is a net value measured by testing a motor according to the SAEJ1349 norm at a given engine evolution speed. The power of another motor may be different from the indicated value. The true power of a motor depends on several factors such as engine evolution speed, temperature, humidity, atmospheric pressure, maintenance and others.

### + Other versions :

Version	Engine	Displacement	Product code
ARO PRO 40H C3	Honda GP160	160 cc	3000203501

More  
information  
about Aro





MICRO TILLER (IN OPTION)



**Weeder Kit**  
Ref 8000020710  
Gen Code 3700304806144



**Ridger Kit**  
Ref 8000020701  
Gen Code 3700304806052



**Border edger kit**  
Ref 8000020704  
Gen Code 3700304806038



**Dethatcher kit**  
Ref 8000020705  
Gen Code 3700304806106

NANO & MESO ACCESSORIES (IN OPTION)



**Dethatcher kit (in option)**  
Ref 8100020421  
Gen Code 3700304806540



**Ridger kit (in option)**  
Ref 8000026512  
Gen Code 3700304806441



**Dethatcher kit (in option)**  
Ref 8000026511  
Gen Code 3700304806434



**Battery charger (delivered with Tillence)**  
Ref 0350060001  
Gen Code 3700304809039



**Battery (delivered with Tillence)**  
Ref 0350030001  
Gen Code 3700304809046

TILLECE ACCESSORIES (DETHATCHER KIT IN OPTION)

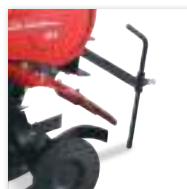
ECO-ECOMAX-TERRO-ELITE ACCESSORIES (IN OPTION)



**Complete kit with iron wheels, ridger, potatoes ridger, plough, pole and hubs**  
Ref 8000020105  
Gen Code 3700304806267



**Ridger kit with wheels**  
Ref 8000020104  
Gen Code 3700304806137



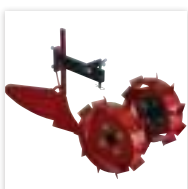
**Adjustable spur**  
Ref 3001000046  
Gen Code 3700304806397



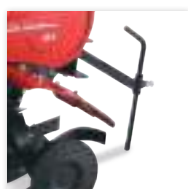
**Set of 6 tines**

	Standard knives	Helicoidal knives
<b>Dismountable tines</b>	Ref 8000020125	Ref 8000020117
<b>Monobloc tines</b>	Ref 8000020127	

ARO ACCESSORIES (IN OPTION)



**Ridger kit with wheels**  
Ref 8000020104  
Gen Code 3700304806137



**Adjustable spur**  
Ref 3001000046  
Gen Code 3700304806397



# Maintenance of vegetable gardens



## CONVERTIBLE TILLERS



# Convertible Tiller : Vario

## VARIO 55P C3



### Features

- > Professional cast iron engine, with double element filter
- > 6 dismountable forged tines (helicoidal riveted knives) + discs
- > Height and offset adjustable handlebar with only one lever
- > Transmission by chain, dismountable and greased
- > Waterproof seals on transmission shaft Ø 25mm
- > Patented mechanical gearbox : 2 forward gears / 1 reverse gear, control on handlebar
- > Adjustable speed of tines rotation from 28 to 165 rpm
- > Belt tension clutch
- > Adjustable spur
- > «Soft grips» handles
- > Foldable front wheel without tools
- > Removable front cover for the installation of front accessories

### Technical information

Recomended area	< 2500 m <sup>2</sup>
Working width	40 / 60 / 85 cm
Gears	2 forward (28 to 165 rpm) / 1 reverse
Working tools	6 tines Ø 320 mm
Weight	58 kg
Engine	Pubert R210 BH
Displacement	212 cc
Net power <sup>1</sup>	4,2 KW to 3600 rpm
Nominal power	4 KW to 3300 rpm
Fuel tank capacity	3,6 L
Oil tank apacity	0,6 L

### Practical information

Packaging	Carton box
Box dimensions (Lxlxh)	830 x 600 x 820 mm
Quantity per pallet	12
Pallet dimensions (Lxlxh)	1650 x 1200 x 2630 mm
Product code	<b>3000202107</b>

### + Other versions :

Version	Engine	Displacement	Product code
<b>VARIO 40H C3</b>	Honda GP160	163 cc	<b>3000022106</b>
<b>VARIO 65B C3</b>	Briggs&Stratton CR950	208 cc	<b>3000022107</b>

More information about Vario with cable clutch



For accessories or options please contact us or visit our website [www.pubert.com](http://www.pubert.com)

<sup>1</sup> The Engine power output indicated in this document is a net value measured by testing a motor according to the SAEJ1349 norm at a given engine evolution speed. The power of another motor may be different from the indicated value. The true power of a motor depends on several factors such as engine evolution speed, temperature, humidity, atmospheric pressure, maintenance and others.

# Convertible Tiller : Vario VARIO 40H D3



Non contractual picture

### Features

- > Honda cast iron engine, with oil bath filter
- > 6 dismantlable forged tines (helicoïdal riveted knives) + discs
- > Soft pneumatic clutch: increase the belt lifetime and using comfort
- > Height and offset adjustable handlebar with only one lever
- > Transmission by chain, dismantlable and greased
- > Waterproof seals on transmission shaft Ø 25mm
- > Patented mechanical gearbox : 2 forward gears / 1 reverse gear, control on handlebar
- > Adjustable speed of tines rotation from 28 to 165 rpm
- > Belt tension clutch
- > Adjustable spur
- > «Soft grips» handles
- > Foldable front wheel without tools

### Technical information

Recommended area	< 2500 m <sup>2</sup>
Working width	40 / 60 / 85 cm
Gears	2 forward (28 to 165 rpm) / 1 reverse
Working tools	6 tines Ø 320 mm
Weight	60 kg
Engine	Honda GP160
Displacement	163 cc
Net power <sup>1</sup>	3,6 KW to 3600 rpm
Nominal power	3,4 KW to 3300 rpm
Fuel tank capacity	3,1 L
Oil tank capacity	0,6 L

### Practical information

Packaging	Carton box
Box dimensions (LxHxh)	830 x 600 x 820 mm
Quantity per pallet	12
Pallet dimensions (LxHxh)	1650 x 1200 x 2630 mm
Product code	<b>300022203</b>
Gen code	3700304810714

For accessories or options please contact us or visit our website [www.pubert.com](http://www.pubert.com)

<sup>1</sup> The Engine power output indicated in this document is a net value measured by testing a motor according to the SAEJ1349 norm at a given engine evolution speed. The power of another motor may be different from the indicated value. The true power of a motor depends on several factors such as engine evolution speed, temperature, humidity, atmospheric pressure, maintenance and others.

More information about Vario with pneumatic clutch



# Convertible Tiller : Quatro Junior

## Q JUNIOR 60H



Non contractual picture

### Features

- > Honda cast iron engine, with oil bath air filter
- > 4, monobloc, forged steel tines + 2 additional tines (helicoidal riveted blades) + discs
- > Reinforced chassis
- > Elliptical, adjustable height and floated handlebar with only one lever
- > Alloy Japanese transmission on high quality ball bearing, lubrication with oil and with double protection
- > Waterproof seals on transmission shaft on blade spindle  $\varnothing$  25 mm
- > Belt tension clutch
- > Adjustable spur
- > Foldable front wheel without tools

### Technical information

Recomended area	< 2 500 m <sup>2</sup>
Working width	60 / 90 cm
Gears	2 forward 35 - 120 rpm-1 1 reverse
Working tools	6 tines $\varnothing$ 325 mm
Weight	76 kg
Engine	Honda GP200
Displacement	196 cc
Net power <sup>1</sup>	4,1 KW to 3600 rpm
Nominal power	3,9 KW to 3300 rpm
Fuel tank capacity	3,1 L
Oil tank apacity	0,6 L

### Practical information

Packaging	Carton box
Box dimensions (Lxlxh)	830 x 600 x 820 mm
Quantity per pallet	12
Pallet dimensions (Lxlxh)	1650 x 1200 x 2630 mm
Product code	3500020704
Gen code	3700304801354

For accessories or options please contact us or visit our website [www.pubert.com](http://www.pubert.com)

<sup>1</sup> The Engine power output indicated in this document is a net value measured by testing a motor according to the SAEJ1349 norm at a given engine evolution speed. The power of another motor may be different from the indicated value. The true power of a motor depends on several factors such as engine evolution speed, temperature, humidity, atmospheric pressure, maintenance and others.

More  
information about  
Quatro Junior



# Convertible Tiller : Quatro Senior Q SENIOR 60H D



## Features

- > Honda cast iron engine with oil bath air filter
- > Remote engine switch-button
- > 4 monobloc, forged steel tines + 2 additional tines (ploughing riveted blades) + discs
- > Reinforced chassis
- > Elliptical adjustable height and floated handlebar with only one lever
- > Double protection at the bottom of the transmission
- > Mechanical gearbox - Steel housings - Lubrification with oil
- > Waterproof seals on transmission shaft Ø 30 mm
- > Belt tension clutch
- > Blade disconnection integrated and independant on each wheel
- > Adjustable spur
- > Foldable front wheel without tools

## Technical information

Recommended area	< 5 000 m <sup>2</sup>
Working width	60 / 90 cm
Gears	3 forward 40-75-130 rpm-1 1 reverse
Working tools	6 tines Ø 325 mm + discs
Weight	70 kg
Engine	Honda GP200
Displacement	196 cc
Net power <sup>1</sup>	4,1 KW to 3600 rpm
Nominal power	3,9 KW to 3300 rpm
Fuel tank capacity	3,1 L
Oil tank apacity	0,6 L

## Practical information

Packaging	Carton box
Box dimensions (Lxhxh)	830 x 600 x 820 mm
Quantity per pallet	12
Pallet dimensions (Lxhxh)	1650 x 1200 x 2630 mm
Produc code	<b>3500020208</b>
Gen code	3700304801378

For accessories or options please contact us or visit our website [www.pubert.com](http://www.pubert.com)

<sup>1</sup> The Engine power output indicated in this document is a net value measured by testing a motor according to the SAE1349 norm at a given engine evolution speed. The power of another motor may be different from the indicated value. The true power of a motor depends on several factors such as engine evolution speed, temperature, humidity, atmospheric pressure, maintenance and others.

More information about Quatro Senior



VARIO ACCESSORIES (IN OPTION)



**Ploughing kit 400 x 8**  
Ref 8000020109  
Gen Code 3700304806212



**Ridger kit with wheels**  
Ref 8000020104  
Gen Code 3700304806137



**Potatoes ridger kit**  
Ref 8002011307  
Gen Code 3700304809015



**Complete kit 3 functions**  
Ref 8000020119  
Gen Code 3700304806403



**Grader blade**  
Ref 8100021011  
Gen Code 3700304806472



**Snow tires chain**  
Ref 8200021311  
Gen Code 3700304806519

QUATRO JUNIOR ACCESSORIES (IN OPTION)



**Ploughing kit**  
Ref 8000010205  
Gen Code 3700304806076



**Traction kit + weight**  
Ref 8000010202  
Gen Code 3700304806175



**Grader blade**  
Ref 8100021031  
Gen Code 3700304806533



**Ploughing kit**  
Ref 8000010209  
Gen Code 3700304806083



**Traction kit + weight**  
Ref 8000010210  
Gen Code 3700304806182



**Grader blade**  
Ref 8100021021  
Gen Code 3700304805489

QUATRO SENIOR ACCESSORIES (IN OPTION)



# Rear tine Tiller : Roto 400 ROTO 404 HD



### Features

- > Alloy Japanese transmission on high quality ball bearing, lubrication with oil with double protection
- > Japanese helicoidal tines (2 knives by tines)
- > Height and offset adjustable handlebar
- > Belt tension clutch
- > Adjustable and removable depth spur (without tool)
- > Tractor tires 350x6
- > Very compact and manoeuvrable

### Technical information

Recomended area	< 2500 m <sup>2</sup>
Working width	48 cm
Gears	2 forward / 1 reverse 1,04 km/h - 0,67 km/h Rotation tilling blades in forward direction - 207,3 rpm
Working tools	4 japanese helicoidal tines
Weight	73 kg
Engine	Pubert R180
Displacement	179 cc
Net power <sup>1</sup>	3,5 KW to 3600 rpm
Nominal power	3,3 KW to 3300 rpm
Fuel tank capacity	3,6 L
Oil tank apacity	0,6 L

### Practical information

Packaging	Carton box
Box dimensions (Lxhxh)	1150 x 600 x 800 mm
Quantity per pallet	3
Pallet dimensions (Lxhxh)	1150 x 650 x 2250 mm
Product code	<b>3200020201</b>
Gen code	3700304801231

For accessories or options please contact us or visit our website [www.pubert.com](http://www.pubert.com)

### + Other versions :

Version	Engine	Displacement	Product code
<b>ROTO 406 HD</b>	Briggs&Stratton CR950	208 cc	<b>3200020206</b>
<b>ROTO 408 HD</b>	Honda GP160	163 cc	<b>3200020204</b>

More information about Roto



<sup>1</sup> The Engine power output indicated in this document is a net value measured by testing a motor according to the SAE1349 norm at a given engine evolution speed. The power of another motor may be different from the indicated value. The true power of a motor depends on several factors such as engine evolution speed, temperature, humidity, atmospheric pressure, maintenance and others.



# Rear tine Tiller : Roto 500 ROTO 507



## Features

- > Professional cast iron engine
- > Remote switch-stop
- > 4 monobloc forged steel tines (10 blades + 2 cleaners)
- > Reinforced chassis
- > Height adjustable handlebar
- > Mechanical gearbox transmission - aluminium housings - lubrication with oil
- > Belt tension clutch
- > Control lever to disconnect the wheels
- > Brake prop released by rotating in the direction of movement of movement
- > Adjustable depth spur
- > Tractor tires 350x7

## Technical information

Recommended area	> 5000 m <sup>2</sup>
Working width	50 cm
Gears	<b>Moving :</b> 2 forward : 1,06 km/h - 3,8 km/h 1 reverse : 1,28 km/h
	<b>Working :</b> Rotation tilling blades in forward direction (213 rpm), in reverse direction (225 rpm)
Working tools	4 tines Ø 320 mm
Weight	86 kg
Engine	Subaru EP17
Displacement	169 cc
Net power <sup>1</sup>	4,2 KW to 4000 rpm
Nominal power	3,7 KW to 3400 rpm
Fuel tank capacity	3,4 L
Oil tank capacity	0,6 L

## Practical information

Packaging	Unit box
Box dimensions (LxHxh)	1150 x 600 x 740 mm
Quantity per pallet	3
Pallet dimensions (LxHxh)	1150 x 650 x 2250 mm
Product code	<b>000050202</b>
Gen code	3700304801170

For accessories or options please contact us or visit our website [www.pubert.com](http://www.pubert.com)

<sup>1</sup> The Engine power output indicated in this document is a net value measured by testing a motor according to the SAE1349 norm at a given engine evolution speed. The power of another motor may be different from the indicated value. The true power of a motor depends on several factors such as engine evolution speed, temperature, humidity, atmospheric pressure, maintenance and others.

More  
information about  
Roto



# Mowing and clearing



**BRUSHCUTTERS . MOTORMOWER . ROTOMOWER**

# Wheeled brushcutter : First FIRST 55P



## Features

- > Safety stop engine lever
- > Centralized cutting height control : 4 positions
- > Steel cutting cover 53 cm
- > Removable side and front deflector
- > Dismountable and independent 3rd main bearing for a good crankshaft protection
- > Rear wheels with differential effects
- > Rear wheels on ball bearings
- > Swiveling front wheel (possible fixed position)
- > Quick handlebar disassembly without tools

## Technical information

Area recommended	< 2000 m <sup>2</sup>
Working width	51 cm
Gears	1 forward - 2,3 km/h
Cutting height	110-90-70-55 mm
Wheels	Front : ø 200 mm Rear : ø 420 mm
Weight	52 kg
Type of engine	Pubert RV170
Displacement	173 cc
Net power <sup>1</sup>	3,45 KW at 3600 rpm
Nominal power	3,3 KW at 3250 rpm
Fuel tank capacity	1 L
Oil tank capacity	0,6 L

## Practical information

Packaging	Carton box
Box dimensions (LxIxH)	1200 x 600 x 520 mm
Quantity by pallet	8
Pallet dimensions	1200x1200x2220 mm
Reference	<b>4000021101</b>
Gen code	3700304802351

For accessories or options please contact us  
or visit our website [www.pubert.com](http://www.pubert.com)

<sup>1</sup> The Engine power output indicated in this document is a net value measured by testing a motor according to the SAEJ1349 norm at a given engine evolution speed. The power of another motor may be different from the indicated value. The true power of a motor depends on several factors such as engine evolution speed, temperature, humidity, atmospheric pressure, maintenance and others.

More  
information about  
First



# Wheeled brushcutter : Xplorer XPLORER 60S



## Features

- > Safety stop engine lever
- > Steel cutting cover 53 cm
- > Removable side and front deflector
- > Centralized cutting height control : 4 positions
- > Dismountable and independent 3rd main bearing for a good crankshaft protection
- > Rear wheels with differential effects
- > Rear wheels on ball bearings
- > Swiveling double front wheel (possible fixed position)
- > Quick handlebar disassembly without tool

## Technical information

Area recommended	< 2000 m <sup>2</sup>
Working width	51 cm
Gears	1 forward - 2,3 km/h
Cutting height	110-90-70-55 mm
Wheels	Front : ø 200 mm Rear : ø 420 mm
Weight	54 kg
Type of engine	Subaru EA 190V
Displacement	189 cc
Net power <sup>1</sup>	4,1 KW at 3600 rpm
Nominal power	3,4 KW at 3200 rpm
Fuel tank capacity	1 L
Oil tank capacity	0,6 L

## Practical information

Packaging	Carton box
Box dimensions (LxHxh)	1200 x 600 x 520 mm
Quantity by pallet	8
Pallet dimensions	1200x1200x2220 mm
Reference	<b>4000020901</b>
Gen code	3700304802382

For accessories or options please contact us  
or visit our website [www.pubert.com](http://www.pubert.com)

## + Other versions :

Version	Engine	Displacement	Product code
<b>XPLORER 60B</b>	Briggs & Stratton 675 Exi	163 cc	<b>4000020903</b>
<b>XPLORER 55H</b>	Honda GCV160	160 cc	<b>4000020902</b>

More  
information about  
Xplorer



<sup>1</sup> The Engine power output indicated in this document is a net value measured by testing a motor according to the SAE1349 norm at a given engine evolution speed. The power of another motor may be different from the indicated value. The true power of a motor depends on several factors such as engine evolution speed, temperature, humidity, atmospheric pressure, maintenance and others.

# Wheeled brushcutter : Xtrem

## XTREM 12 60S



### Features

- > Safety stop engine lever
- > 7 speeds gearbox
- > Height and lateral adjustable handlebar with only one lever
- > Ergonomic controls and handles
- > Steel cutting cover 53 cm
- > Removable front and side deflectors
- > Stringy plant cutting on blade hub
- > Dismountable and independent 3rd main bearing for a good crankshaft protection
- > Free wheels, rotates 360°
- > Inspection hatch at the cover back
- > Centralized cutting height control : 4 positions
- > Rear wheels on ball bearings
- > Swiveling metallic front wheel (possible fixed position)
- > Grinding blade

### Technical information

Area recommended	< 4000 m <sup>2</sup>
Working width	51 cm
Gears	From 2 to 4,2 km/h
Cutting height	110-90-70-55 mm
Wheels	Front : ø 200 mm Rear : ø 370 mm
Weight	62 kg
Type of engine	Subaru EA 190V
Displacement	189 cc
Net power <sup>1</sup>	4,1 KW at 3600 rpm
Nominal power	3,4 KW at 3200 rpm
Fuel tank capacity	1 L
Oil tank capacity	0,6 L

### Practical information

Packaging	Unit box
Box dimensions (LxHxh)	1160 x 600 x 660 mm
Quantity by pallet	6
Pallet dimensions	1200x1200x2100mm
Reference	<b>4000200804</b>
Gen code	3700304802238

For accessories or options please contact us or visit our website [www.pubert.com](http://www.pubert.com)

<sup>1</sup> The Engine power output indicated in this document is a net value measured by testing a motor according to the SAEJ1349 norm at a given engine evolution speed. The power of another motor may be different from the indicated value. The true power of a motor depends on several factors such as engine evolution speed, temperature, humidity, atmospheric pressure, maintenance and others.

### + Other versions :

Version	Engine	Displacement	Product code
XTREM 12 65H	Honda GCV190	187 cc	4000200803

More  
information about  
Xtrem



# Wheeled brushcutter : Xtrem XTREM 12 60SM



## Features

- > 7 speeds gearbox
- > Height and lateral adjustable handlebar with only one lever
- > Ergonomic controls and handles
- > Steel cutting cover 53 cm
- > Removable front and side deflectors
- > Stringy plant cutting on blade hub
- > Dismountable and independent 3rd main bearing for a good crankshaft protection
- > Wheels with differential : «Special mountain»
- > Inspection hatch at the cover back
- > Centralized cutting height control : 4 positions
- > Rear wheels on ball bearings
- > Swiveling metallic front wheel (possible fixed position)
- > Grinding blade

## Technical information

Area recommended	< 4000 m <sup>2</sup>
Working width	51 cm
Gears	From 2 to 4,2 km/h
Cutting height	110-90-70-55 mm
Wheels	Front : ø 200 mm Rear : ø 370 mm
Weight	62 kg
Type of engine	Subaru EA 190V
Displacement	189 cc
Net power <sup>1</sup>	4,1 KW at 3600 rpm
Nominal power	3,4 KW at 3200 rpm
Fuel tank capacity	1 L
Oil tank capacity	0,6 L

## Practical information

Packaging	Unit box
Box dimensions (LxHxh)	1160 x 600 x 660 mm
Quantity by pallet	6
Pallet dimensions	1200x1200x2100mm
Reference	<b>4000200805</b>
Gen code	3700304802245

For accessories or options please contact us  
or visit our website [www.pubert.com](http://www.pubert.com)

<sup>1</sup> The Engine power output indicated in this document is a net value measured by testing a motor according to the SAE1349 norm at a given engine evolution speed. The power of another motor may be different from the indicated value. The true power of a motor depends on several factors such as engine evolution speed, temperature, humidity, atmospheric pressure, maintenance and others.

More  
information about  
Xtrem



# Wheeled brushcutter : L Junior

## L JUNIOR 65H



Non contractual picture



### L JUNIOR ACCESSORY (IN OPTION)



#### Chain kit option

Ref 8000020401  
Gen Code 3700304806274

### + Other versions :

Version	Engine	Displacement	Product code
L JUNIOR 60S	Subaru EA 190V	189 cc	5000200104
L JUNIOR 65P	Pubert RV225	225 cc	5000020105

#### Features

- > Easy to start the professional cast iron engine GSV190
- > Double elements air filter
- > Friction transmission with instant reverse
- > Safety stop engine lever
- > Adjustable height and floated hand lebar with only one lever
- > Independent blade clutch
- > Oscillating cutting cover 53 cm
- > Right hand side of cutting cover removable for working in long grass
- > Grinding blade
- > Cutting height adjusted by adding or removing washers : 2 positions
- > Tractor tires with run flat product

#### Technical information

Recommended area	< 5000 m <sup>2</sup>
Working width	52 cm
Gears	2 forward 1: 2,6 km/h - 2 : 3,3 km/h 1 reverse
Cutting height	75 - 52 mm
Weight	75 kg
Engine	Honda GSV190
Displacement	187 cc
Net power <sup>1</sup>	3,4 KW to 2900 rpm
Nominal power	3,8 KW to 3600 rpm
Fuel tank capacity	1,1 L
Oil tank capacity	0,55 L

#### Practical information

Packaging	Unit box
Box dimensions (LxH)	1200 x 600 x 700 mm
Quantity per pallet	4
Pallet dimensions (LxH)	1200 x 1200 x 1500 mm
Product code	<b>5000020103</b>
Gen code	3700304804034

For accessories or options please contact us or visit our website [www.pubert.com](http://www.pubert.com)

<sup>1</sup> The Engine power output indicated in this document is a net value measured by testing a motor according to the SAEJ1349 norm at a given engine evolution speed. The power of another motor may be different from the indicated value. The true power of a motor depends on several factors such as engine evolution speed, temperature, humidity, atmospheric pressure, maintenance and others.

More information about L Junior



# Wheeled brushcutter : L Senior L SENIOR 110H



Non contractual picture



## Features

- > Power of the engine GXV340
- > Safety stop engine lever
- > Independent safety brake
- > Friction transmission with instant reverse
- > Adjustable height and floated handlebar with only one lever
- > Independent blade clutch
- > Oscillating cutting cover 68 cm
- > Grinding blade
- > Reinforced brushcutting blade
- > Cutting height adjusted by adding or removing washers : 2 positions
- > Rear tyre with run flat product
- > Lockable differential on rear wheel

## Technical information

Recommended area	< 5000 m <sup>2</sup>
Working width	65 cm
Gears	3 forward 2,6 km/h - 2,8 km/h - 3,2 km/h 1 reverse
Cutting height	85 - 50 mm
Wheels	16 x 6,5 / 8 run flat wheel
Weight	143 kg
Engine	Honda GXV 340
Displacement	337 cc
Net power <sup>1</sup>	6,6 KW to 3600 rpm
Nominal power	6,6 KW to 3600 rpm
Fuel tank capacity	2,3 L
Oil tank capacity	1,1 L

## Practical information

Packaging	Unit box
Box dimensions (LxHxh)	1250 x 800 x 900 mm
Quantity per pallet	2
Pallet dimensions (LxHxh)	1250 x 800 x 1800 mm
Product code	<b>5100020101</b>
Gen code	3700304804027

## L SENIOR ACCESSORIES (IN OPTION)



**Two swivelling front wheels**

Ref 8000020801  
Gen Code 3700304806168



**Chain kit option**

Ref 8000020803  
Gen Code 3700304806281

For accessories or options please contact us  
or visit our website [www.pubert.com](http://www.pubert.com)

<sup>1</sup> The Engine power output indicated in this document is a net value measured by testing a motor according to the SAEJ1349 norm at a given engine evolution speed. The power of another motor may be different from the indicated value. The true power of a motor depends on several factors such as engine evolution speed, temperature, humidity, atmospheric pressure, maintenance and others.

More  
information  
about L Senior





# Motormower : MF 90 40 H



For accessories or options please contact us  
or visit our website [www.pubert.com](http://www.pubert.com)

## Technical information

Recommended area	< 3000 m <sup>2</sup>
Working width	87 cm
Gears	Single speed (2,5 km/h)
Weight	73 kg
Engine	Honda GP160
Displacement	163 cc
Net power <sup>1</sup>	3,6 KW to 3600 rpm
Nominal power	3,4 KW to 3300 rpm
Fuel tank capacity	3,1 L
Oil tank capacity	0,6 L

## Practical information

Packaging	Unit box
Box dimensions (LxIxxh)	1200 x 800 x 1000 mm
Quantity per pallet	2
Pallet dimensions (LxIxxh)	1200 x 800 x 2000 mm
Product code	<b>0000030208</b>
Gen code	3700304807295

## Features

- > Dead man's handle safety lever on handlebar
- > Security stop engine lever
- > Independent clutch for cutting bar
- > Height of cut adjustable with skids
- > Minimum cutting height : 3 cm
- > Mechanism with kinetic cone
- > ø 350 mm tractor wheels run flat treated
- > Coverage 1500 m<sup>2</sup> per hour on open land
- > Oscillating ESM bar (87 cm) with self adjusting mechanism between the blade and the fingers
- > 3/4 turn hubs for improved handling
- > Foldable handlebars on silent blocks

<sup>1</sup> The Engine power output indicated in this document is a net value measured by testing a motor according to the SAEJ1349 norm at a given engine evolution speed. The power of another motor may be different from the indicated value. The true power of a motor depends on several factors such as engine evolution speed, temperature, humidity, atmospheric pressure, maintenance and others.

# Rotomower : RM 65H

## Features

- > Height adjustable and foldable handlebar
- > 4 retractable blades and reversible on discs
- > Coverage 1000 m<sup>2</sup> in 40 mn
- > 3/4 turn hubs for improved handling
- > Slide discharge carter
- > Tyre with run flat product
- > Perfectly suited to stony ground

## Practical information

Packaging	Carton box
Box dimensions (LxIxxh)	1200 x 800 x 1000 mm
Quantity per pallet	2
Pallet dimensions (LxIxxh)	1200 x 800 x 2000 mm
Product code	<b>0000040202</b>

## Technical information

Recommended area	< 5000 m <sup>2</sup>
Working width	60 cm
Gears	Single speed (3 km/h)
Weight	80 kg
Wheels	Tractor wheels ø 350 mm
Engine	Honda GSV190
Displacement	187 cc
Net power <sup>1</sup>	3,8 KW to 3600 rpm
Nominal power	3,4 KW to 2900 rpm
Fuel tank capacity	0,9 L
Oil tank capacity	0,6 L



For accessories or options please contact us  
or visit our website [www.pubert.com](http://www.pubert.com)

More  
information  
about MF 90 &  
RM 65H



# Lawn upkeep



## SCARIFIERS



# Scarifier : Cesar

## CESAR 40B



### Features

- > 40L collecting bag, wide opening for easy emptying
- > Foldable handlebar
- > 15 fixed blades
- > Dead-man's handle for rotor clutch on handlebar
- > Rotor assembled on bearings with cast iron flange
- > Lever on the handlebar for lowering the rotor to the ground
- > Continuous blades adjustment from 0 to 22 mm (+/-2)
- > Stamped steel frame

### Technical information

Recommended area	< 1500 m <sup>2</sup>
Working width	38 cm
Wheels	ø 200 mm
Weight	34 kg
Type of engine	Briggs & Stratton 550 Series
Displacement	127 cc
Net power <sup>1</sup>	2,39 KW to 3600 rpm
Nominal power	2,3 KW to 3150 rpm
Fuel tank capacity	1,5 L
Oil tank capacity	0,4 L

### Practical information

Packaging	Carton box
Box dimensions (LxHxh)	720 x 600 x 600 mm
Quantity per pallet	6
Pallet dimensions (LxHxh)	1200 x 800 x 1930 mm
Product code	<b>5600020201</b>
Gen code	3700304856019

For accessories or options please contact us or visit our website [www.pubert.com](http://www.pubert.com)

### + Other versions :

Version	Engine	Displacement	Product code
<b>CESAR 40H</b>	Honda GP160	163 cc	<b>5600020204</b>
<b>CESAR 45P</b>	Pubert R180	179 cc	<b>5600020205</b>
<b>CESAR 1800E</b>	Electric engine	1800 W	<b>5700020101</b>

More information about Cesar 1800E



<sup>1</sup> The Engine power output indicated in this document is a net value measured by testing a motor according to the SAE1349 norm at a given engine evolution speed. The power of another motor may be different from the indicated value. The true power of a motor depends on several factors such as engine evolution speed, temperature, humidity, atmospheric pressure, maintenance and others.

# Scarifier : Oscar

## OSCAR 40H



### Features

- > Professional cast iron engine, warranted 3 years or 2500 hours
- > 50 liters collecting box, wide opening for easy emptying
- > Foldable handlebar
- > Dead-man's handle for rotor clutch on handlebar
- > High strength level wheels
- > Working depth adjustable by thumb wheel
- > Independent lever for lowering the rotor to the ground
- > 16 fixed knives
- > Rotor assembles on bearings with cast iron flange and grease fittings

### Technical information

Recommended area	< 5000 m <sup>2</sup>
Working width	40 cm
Working depth	0-1,5 cm
Wheels	Forward ø 200 mm Reverse ø 250 mm
Weight	50 kg
Type of engine	Honda GP160
Displacement	163 cc
Net power <sup>1</sup>	3,6 KW to 3600 rpm
Nominal power	3,4 KW to 3300 rpm
Fuel tank capacity	3,1 L
Oil tank capacity	0,6 L

### Practical information

Packaging	Carton box
Box dimensions (LxIxh)	800 x 840 x 880 mm
Quantity per pallet	3
Pallet dimensions (LxIxh)	800 x 860 x 2600 mm
Product code	<b>000020218</b>

For accessories or options please contact us or visit our website [www.pubert.com](http://www.pubert.com)

<sup>1</sup> The Engine power output indicated in this document is a net value measured by testing a motor according to the SAE1349 norm at a given engine evolution speed. The power of another motor may be different from the indicated value. The true power of a motor depends on several factors such as engine evolution speed, temperature, humidity, atmospheric pressure, maintenance and others.

Non contractual picture



More information about Oscar 50S



# Scarifier : Oscar OSCAR PRO 40H



Non contractual picture

## Features

- > Professional cast iron engine with oil bath air filter
- > 28 foldable blades in double row
- > Independent lever for lowering rotor to the ground
- > Front wheel and rear wheel with bearing and metal rims
- > Dead-man's handle for rotor clutch on handlebar
- > Working depth adjustable by thumb-wheel
- > Foldable handlebar
- > Rotor assembled on bearings with cast iron flange and grease fittings

## Technical information

Recomended area	< 5000 m <sup>2</sup>
Working width	50 cm
Working depth	0-1,5 cm
Wheels	Forward ø 210 mm Reverse ø 250 mm
Weight	65 kg
Type of engine	Honda GP160
Displacement	163 cc
Net power <sup>1</sup>	3,6 KW to 3600 rpm
Nominal power	3,4 KW to 3300 rpm
Fuel tank capacity	3,1 L
Oil tank capacity	0,6 L

## Practical information

Packaging	Carton box
Box dimensions (LxHxh)	800 x 840 x 880 mm
Quantity per pallet	3
Pallet dimensions (LxHxh)	800 x 860 x 2600 mm
Product code	<b>0000020216</b>
Gen code	3700304807325

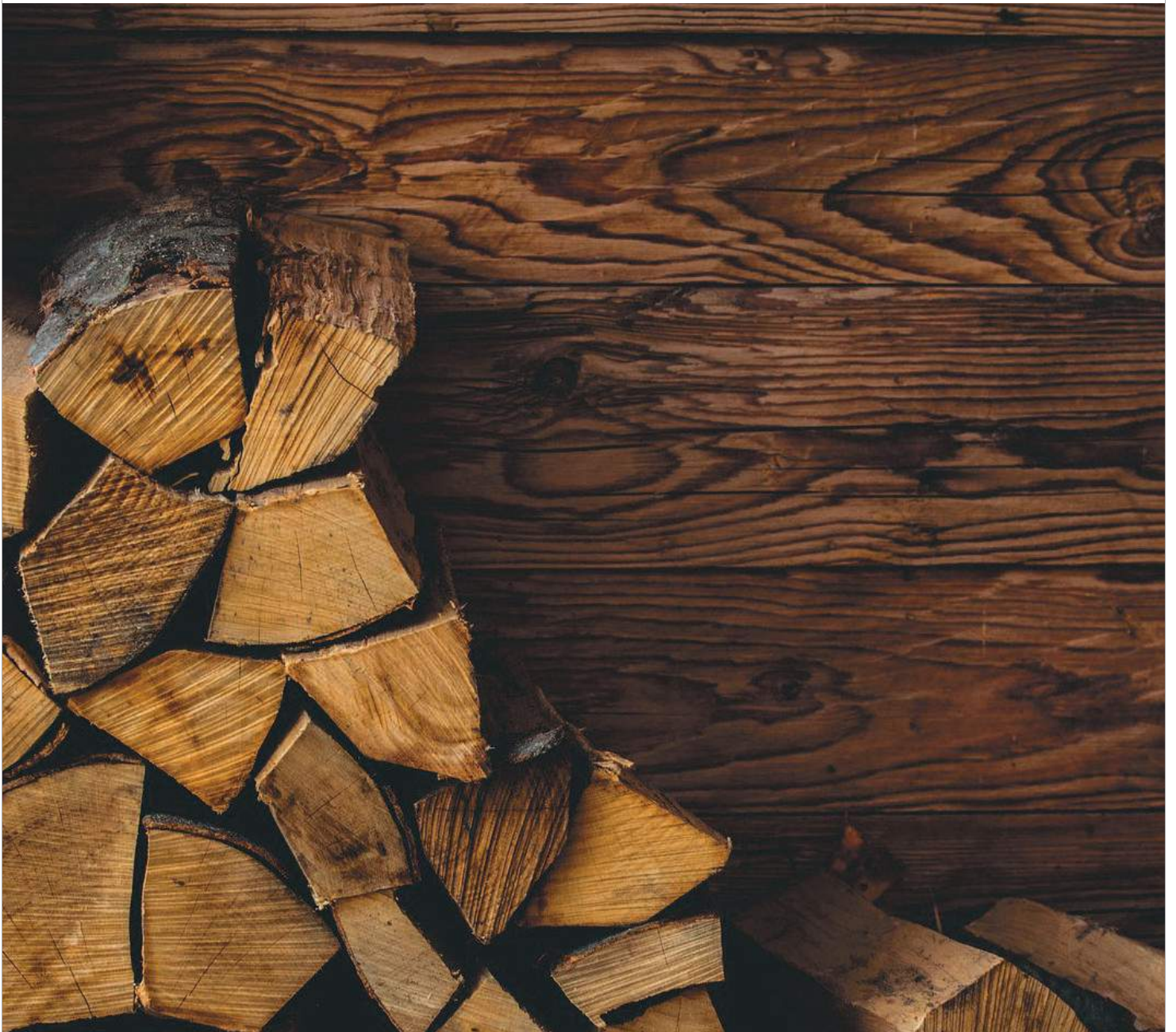
For accessories or options please contact us or visit our website [www.pubert.com](http://www.pubert.com)

<sup>1</sup> The Engine power output indicated in this document is a net value measured by testing a motor according to the SAE1349 norm at a given engine evolution speed. The power of another motor may be different from the indicated value. The true power of a motor depends on several factors such as engine evolution speed, temperature, humidity, atmospheric pressure, maintenance and others.

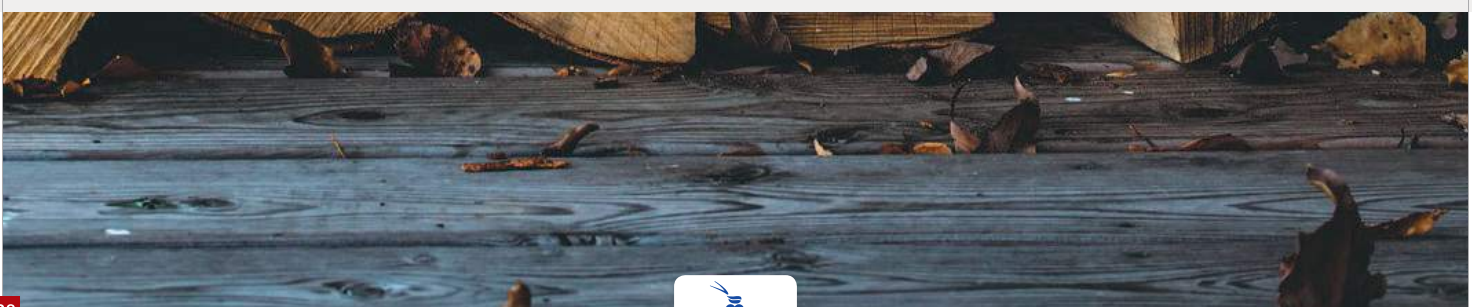
More  
information about  
Oscar Pro



# Woodcutting and branch shredding



**LOGGING SAW BENCHES . SHREDDERS**



# Logging saw benches : Sequoia & Ozigo

## SEQUOIA 55P



### Features

- > Large cutting capacity: log Ø 230mm
- > Saw steel blade Ø 600mm
- > Welded steel stand sawhorse, stable and robust
- > Adjustable log support extension
- > Adjustable stop for the log cutting length
- > Sawdust discharge nozzle
- > Large transport wheels and ergonomic stretcher displacement
- > Powerful engine with belt drive

### Technical information

Maxi cutting diameter	Ø 230 mm
Split log	Ø 300 mm
Blade diameter	Ø 600 mm
Number of teeth	56 teeth
Weight	100 kg
Engine	Pubert R210
Displacement	212 cc
Net power <sup>1</sup>	4,2 KW to 3600 rpm
Nominal power	4,0 KW to 3300 rpm
Fuel tank capacity	3,6 L
Oil tank capacity	0,6 L

### Practical information

Packaging	Carton box
Box dimensions (LxHxh)	830 x 930 x 1250 mm
Quantity per pallet	1
Pallet dimensions (LxHxh)	830 x 930 x 1250 mm
Product code	<b>1100020101</b>
Gen code	3700304811018

For accessories or options please contact us or visit our website [www.pubert.com](http://www.pubert.com)

### + Other versions :

Version	Engine	Displacement	Product code
OZIGO 2500E	Electric engine	2500 W	1100020201

More information about Ozigo & Sequoia



# Shredder : Devor DEVOR X 2500E



## Features

- > Patented double cutting system made up of a disc equipped with 1 knife and a crushing blade
- > Shreds and ejects branches of up to 3.5 cm in diameter effortlessly
- > Can shred up to 2 m<sup>3</sup> of branches per hour
- > It ejects the crushed vegetation through a discharge spout directly into a trailer or wheelbarrow
- > Easy to transport thanks to its handle and wheels
- > Removable discharge spout makes it easy to stow

## Technical information

Recommended volume	2m <sup>3</sup> /h
Shredding capacity	Branches up to ø 3,5 cm
Wheels	Ø 200 mm
Weight	42 kg
Type of engine	Electric power
Displacement	2500 Watts

## Practical information

Packaging	Unit box
Box dimensions (Lxhx)	1200 x 550 x 610 mm
Quantity per pallet	6
Pallet dimensions (Lxhx)	1200 x 1200 x 2000 mm
Product code	<b>0000090203</b>
Gen code	3700304807165

For accessories or options please contact us  
or visit our website [www.pubert.com](http://www.pubert.com)

<sup>1</sup> The Engine power output indicated in this document is a net value measured by testing a motor according to the SAEJ1349 norm at a given engine evolution speed. The power of another motor may be different from the indicated value. The true power of a motor depends on several factors such as engine evolution speed, temperature, humidity, atmospheric pressure, maintenance and others.

More  
information about  
Devor





# Shredder : Iroko

## IROKO 55P



### Features

- > Patented double cutting system made up of a disc equipped with 2 sharp knives and 2 crushing blades
- > Transmission belt for engine protection
- > Shreds and ejects effortlessly branches up to 5 cm diameter
- > Can shred up to 4m<sup>3</sup> of branches per hour
- > It ejects the crushed vegetation through a discharge spout directly into a trailer or wheelbarrow
- > Easy to transport thanks to its handle and wheels
- > Removable discharge spout makes it easy to stow

### Technical information

Recommended volume	4 m <sup>3</sup> /h
Shredding capacity	Ø 5 cm
Wheels	Ø 200 mm
Weight	72 kg
Type of engine	Pubert R210
Displacement	212 cc
Net power <sup>1</sup>	4,2 kW à 3600 tr/min
Nominal power	4 kW à 3300 tr/min
Fuel tank capacity	3,6 L
Oil tank capacity	0,6 L

### Practical information

Packaging	Carton box
Box dimensions (LxIxh)	1200 x 550 x 610 mm
Quantity per pallet	6
Pallet dimensions (LxIxh)	1200 x 1200 x 2400 mm
Product code	<b>1000020102</b>
Gen code	3700304807288

For accessories or options please contact us or visit our website [www.pubert.com](http://www.pubert.com)

### + Other versions :

Version	Engine	Displacement	Product code
<b>IROKO 40H</b>	Honda GP160	163 cc	<b>1000020103</b>

More  
information about  
Iroko

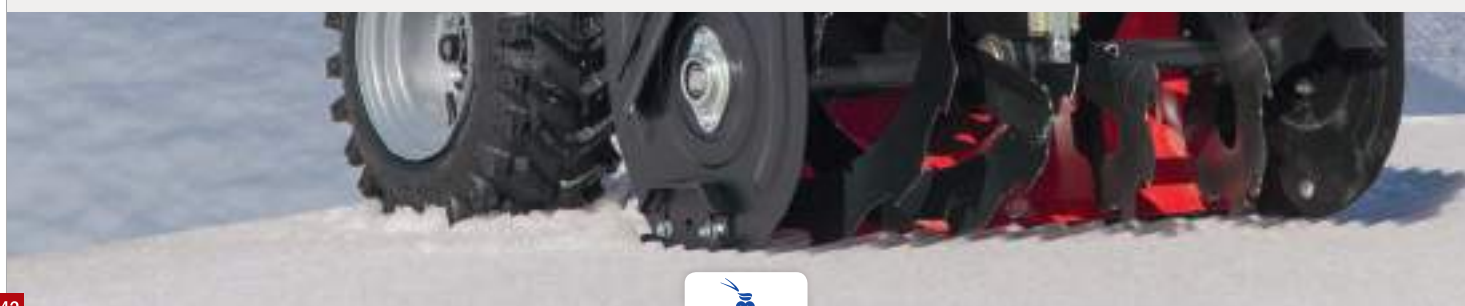


<sup>1</sup> The Engine power output indicated in this document is a net value measured by testing a motor according to the SAEJ1349 norm at a given engine evolution speed. The power of another motor may be different from the indicated value. The true power of a motor depends on several factors such as engine evolution speed, temperature, humidity, atmospheric pressure, maintenance and others.

# Snow removal



## SNOW THROWERS



# Snow thrower : Valto VALTO 24 55P



## Features

- > Retractable cutter blades
- > Trapezoidal double belt
- > Reversible steel skids
- > Chute & deflector controls on handlebar
- > Free hand driving
- > Hand warmers
- > Clutch control «Soft Grip»
- > Special snow light
- > Wheels with tires X-Trac 16 x 4,8 cm

## Technical information

Working width	61 cm
Gears	6 forward / 2 reverse
Transmission	Friction disk
Working tools	320 mm
Weight	110 kg
Engine	Pubert R210 Snow
Displacement	208 cc
Net power <sup>1</sup>	4 KW to 3600 rpm
Nominal power	3,2 KW to 3300 rpm
Driving assistance system	3 / 4 hub
Fuel tank capacity	3 L
Oil tank capacity	0,6 L

## Practical information

Packaging	Carton box
Box dimensions (LxHxh)	1325 x 765 x 915 mm
Quantity per pallet	1
Pallet dimensions (LxHxh)	1360 x 800 x 1060 mm
Product code	<b>7500020303</b>
Gen code	3700304875034

For accessories or options please contact us  
or visit our website [www.pubert.com](http://www.pubert.com)

## + Other versions :

Version	Engine	Displacement	Product code
<b>VALTO 24 60B</b>	Briggs & Stratton 950 Snow	208 cc	<b>7500020301</b>
<b>VALTO 24 70S</b>	Subaru SX21 Snow	211 cc	<b>7500020302</b>

More information about  
Valto 24



# Snow thrower : Valto

## VALTO 28D 95B



### Features

- > Retractable cutter blades
- > Trapezoidal double belt
- > Reversible steel skids
- > Chute & deflector controls on handlebar
- > Free hand driving
- > Hand warmers
- > Clutch control «Soft Grip»
- > Special snow light
- > Wheels with tires X-Trac 16 x 6,5 cm
- > Driver assistance system

### Technical information

Working width	71 cm
Gears	6 forward / 2 reverse
Transmission	Gearbox
Working tools	320 mm
Weight	125 kg
Engine	Briggs & Stratton 1450 Snow
Displacement	306 cc
Net power <sup>1</sup>	7 KW to 3600 rpm
Nominal power	7,07 KW to 3600 rpm
Driving assistance system	Traction control
Fuel tank capacity	3,1 L
Oil tank capacity	0,8 L

### Practical information

Packaging	Carton box
Box dimensions (Lxlxh)	1325 x 765 x 915 mm
Quantity per pallet	1
Pallet dimensions (Lxlxh)	1360 x 800 x 1060 mm
Product code	<b>7500020201</b>
Gen code	3700304875041

For accessories or options please contact us or visit our website [www.pubert.com](http://www.pubert.com)

### + Other versions :

Version	Engine	Displacement	Product code
VALTO 28D 90S	Subaru SX30 Snow	287 cc	7500020202

More information about Valto 28D



<sup>1</sup> The Engine power output indicated in this document is a net value measured by testing a motor according to the SAEJ1349 norm at a given engine evolution speed. The power of another motor may be different from the indicated value. The true power of a motor depends on several factors such as engine evolution speed, temperature, humidity, atmospheric pressure, maintenance and others.

# Snow thrower : Valto

## VALTO 28i 90S



### Features

- > Retractable cutter blades
- > Trapezoidal double belt
- > Reversible steel skids
- > Chute & deflector controls on handlebar
- > Free hand driving
- > Hand warmers
- > Clutch control «Soft Grip»
- > Special snow light
- > Wheels with tires X-Trac 16 x 6,5 cm
- > Drive assistance system
- > Easy Drive System (EDS) which allows an intuitive clutch locking for an effortless driving

### Technical information

Working width	71 cm
Gears	6 forward / 2 reverse
Transmission	Gearbox
Working tools	320 mm
Weight	125 kg
Engine	Subaru SX30
Displacement	287 cc
Net power <sup>1</sup>	7 KW to 4000 rpm
Nominal power	5,5 KW to 3600 rpm
Driving assistance system	EDS
Fuel tank capacity	6 L
Oil tank capacity	0,8 L

### Practical information

Packaging	Carton box
Box dimensions (LxHxh)	1325 x 765 x 915 mm
Quantity per pallet	1
Pallet dimensions (LxHxh)	1360 x 800 x 1060 mm
Product code	<b>7500020104</b>
Gen code	3700304875065

For accessories or options please contact us or visit our website [www.pubert.com](http://www.pubert.com)

### + Other versions :

Version	Engine	Displacement	Product code
VALTO 28i 95B	Briggs & Stratton 1450 Snow	305 cc	7500020105

More information about Valto 28i



## Handlebar

It must be rigid and ergonomic. With an elliptic shape, it allows a better machine handling during soil preparation.

To fit the operator size, the handlebar is adjustable in height; it has also a lateral adjustment on some models, to offset the operator from the working area avoiding trampling.

The double adjustment (high/offset) Pubert® system, by means of a single handle, is greatly appreciated.

## Engine

It creates the necessary movement to drive the mechanic, and allows the tool (tines set) working correctly. Depending on the tiller design, the engine brand and power are chosen by the maker.

The manufacturer Pubert® chose to equip its full range of tillers with horizontal shaft engines. A technical choice allowing a high torque at low engine speeds, and also, once associated with the chain transmission supplying more power to the tines, than a vertical shaft engine does (lawn mower type engine).



## Transmission

It runs and insures the working tools rotation (tines). The most resistant and durable are in steel and independent from the frame and the gearbox. Pubert® transmissions are fully dismountable (2 housing assembled by bolts or thanks to a closing flange), for an easy and low-cost maintenance. Their design (ball bearing, steel sprockets and roller chain lubricated by grease) insures a yield 30% higher than a "worm and wheel" transmission.

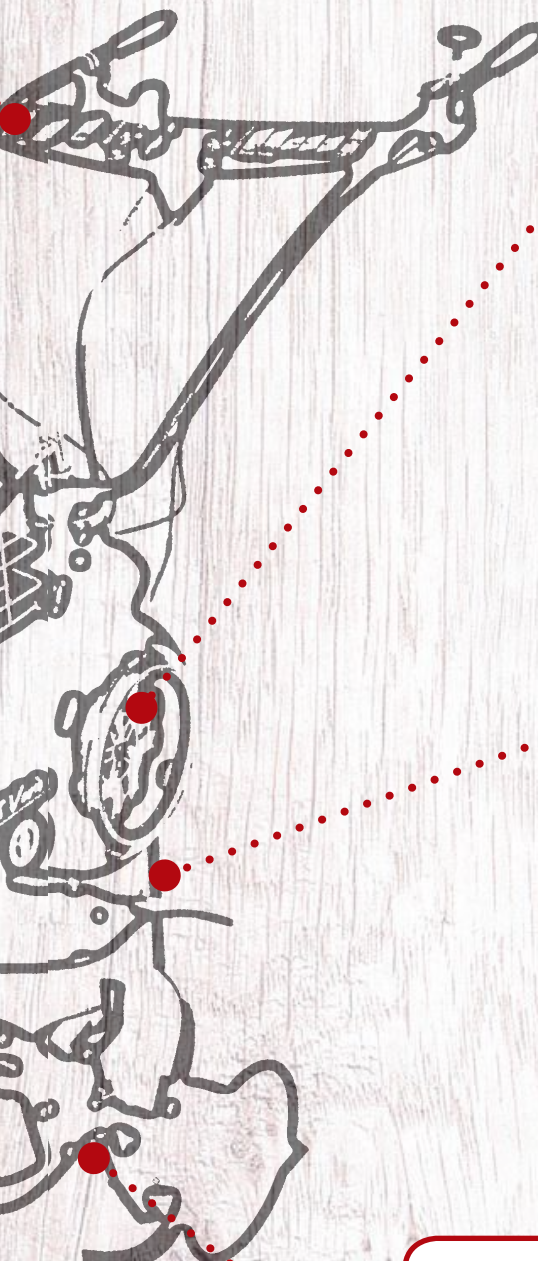


## Transport wheel

It can be single or double, situated on the machine front or back.

It has to be fixed on a support as robust as the machine is heavy. It is foldable or removable without tool to use the tiller in the soil.

The VARIO Pubert® model foldable front wheel system with integrated spring, allows switching from transport to working position in 5 seconds.



## Gearbox

Positioned between the engine and the tines transmission (or wheels in accessory use), it allows to select the rotation direction, and to adapt the speed working.

This process is the only one which insures, sustainably, an easy and precise speed gear shift without any default risk. You find it on all Pubert® tiller equipped with a reverse.

The steel and the design of the gearboxes of the VARIO & ARO “2+1” offer a very large working tools rotation speed range. It insures a high torque over a complete speed range (operating range from 27 to 165 RPM for the most effective).



## Spur

Positioned on the machine rear, this steel spike allows, depending on the pressure exerted on it by the user, to slow the tiller and insure it soil depth control depending the need.

It must be very rigid and must oscillate slightly laterally. There are spurs adjustable in height with 2 different profiles, fitting different soil hardness.

## Tines

This is the tiller working tools. A tine is composed with 4 knives, and a tiller with 4 or 6 tines. This equipment defines the working width and depth.

To resist to deformation and wear, Pubert® made the choice, for it whole tiller range, to choose forged and hardened steel knives. They are assembled by rivet and are unitary dismountable.

Knives can be straight or helicoidally (“Ploughing” type). Plant-protection disks added to the extremity tines set are very useful to preserve surrounding crops.



## «EasyGo» : easy to start



Ecomax «EasyGo» is a competitive-priced model which gets all the functions needed for a quality work and which benefits from the electric effortless start system «Easy-Go».

- > Turning over the soil in preparation for sowing and planting.
- > Electric start at the handlebars («EasyGo» system)
- > Compact machine easy to transport and store
- > Adjustable working width
- > Will not damage adjacent rows of crops thanks to its plant protection discs

### SYSTEM EASY GO

EasyGo system for an effortless engine starting :



EasyGo from Pubert offers the next generation in easy starting. Ingenious integration of an electric starter on a heat engine allows starting with only a finger pressure. No more pulling for power!

## Pneumatic clutch system :

Pubert is the inventor of the tiller with pneumatic clutch handle.

This pneumatic clutch system brings a better prehension on the handles and an unequalled comfort to the user. Thanks to this new technology, clutching becomes smooth and gradual, it also enables a longer lifetime to the belt. "Safety trophy" at URBAVERT-URBATEC exhibition rewarded the efforts made in innovation and safety. This is an important guarantee of comfort: at each gear it is possible to increase or decrease the working speed with the throttle lever.



Pneumatic clutch system



Throttle lever



# Mechanical gearbox :



During Vario tiller development, a very compact new gearbox was fully conceived by the Pubert R&D department in collaboration with a calculation office specialized in motor sport transmission.

It is equipped with 2 gears forward and 1 gear reverse. It is a real technologic innovation, 2 international level patents were filed.

Its main asset is to offer a wide working axle rotation speed range: the choice and design of the actuator gear train insure a high torque over the whole range of speed, the engine power doesn't decrease.

The rotation speed range allows a perfect adaptation to the type of work and kind of soil. It keeps a maximum performance with all its accessories.

## Operation and use principle :

The combined action on the speed selector, situated on the handle dashboard center, and on the engine throttle lever, allows a tines speed rotation from 28 RPM to 165 RPM.

Slow speed 1 : Thanks to the slow rotation of tines, it is possible to break a very hard soil or use a large range of accessories. By action on the engine throttle speed control, tines speed rotation is adjustable from 28 RPM to 67 RPM.

Fast speed 2 : By choosing the fast speed, the machine could till, crumble or draw a trailer. Then the rotation speed range is from 67 RPM to 165 RPM.

Reverse gear : On its center the speed selector has a reverse gear for maneuver on very slow speed for the operator safety.

## Technical description:

It is a heavy-duty and reliable gearbox, with cast aluminum housings and steel processed actuator gear train. The treated shafts are assembled on ball bearings, everything lubricated by liquid grease.

The gearbox assembly is done on a semi-automatic mounting chain. A 100% dedicated test bench control validates the proper functioning of the whole production.





**PUBERT INNOVATION: MESO compact gearbox forward and reverse**

In 2017, Pubert revealed its new extra flat gearbox for tiller. With polymeric shells and processed steel gear pinions. Shafts are mounted on ball bearings, lubricated with grease. A O-ring seal insures the peripheral sealing. Splined treated output shaft for a secure fit on the chain transmission sprocket. A rudder with tension spring enables the reverse gear selection.

The MESO is the first tiller equipped with this new generation gearbox; it is perfect for small and medium size gardens, thanks to its maneuverability. Command on handlebar allows the user to reverse the tines rotation direction:



- Working tines rotation speed: 115 RPM*
- Tines rotation speed when moving backward: 54 RPM*
- Rear drive speed with tines: 0.84 m/s*

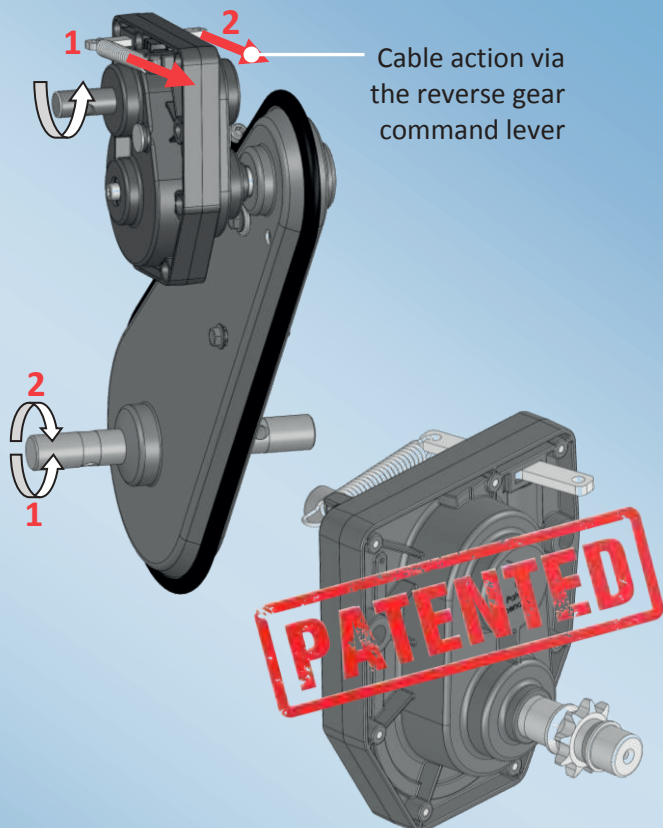
**Operation process :**

**1. FORWARD SELECTION PROCESS**

- The user doesn't operate on the reverse gear command.
- The dog clutch is engaged in the forward gear pinion thanks to the tension spring.
- The chain drives the output shaft.

**2. REVERSE SELECTION PROCESS**

- The user operates on the reverse gear command; the sliding pinion moves on the splined shaft.
- It engages the big steel reverse sprocket which drives the output shaft in the reverse direction.
- The machine moves backward slowly.





Pubert is a french manufacturer since 1840.



Pubert is the worldwide leader in tiller design and manufacturing.

# Notes

A large area of dotted lines for taking notes.

# www.pubert.com: Go on discovering of Pubert's products on our website



## Which model to choose ?

Find our range of products on our website [www.pubert.com](http://www.pubert.com). During your visit, we will help you to choose the most appropriate tiller to your needs. You can see all technical characteristics to compare to different models.

## Need an advice ?

On our website, you can find some data sheets on each model, with use and maintenance advices, videos to understand their use in real situation, accessories and options list...

## Where can you find our products ?

With the interactive map, you can find easily on our website all sales and maintenance points in France and worldwide, with full contact details.



Z.I. de Pierre-Brune - B.P. 25  
85111 Chantonnay Cedex - France  
Phone (+33) 2 51 45 81 81 - Fax. (+33) 2 51 45 81 80  
Web : [www.pubert.com](http://www.pubert.com)