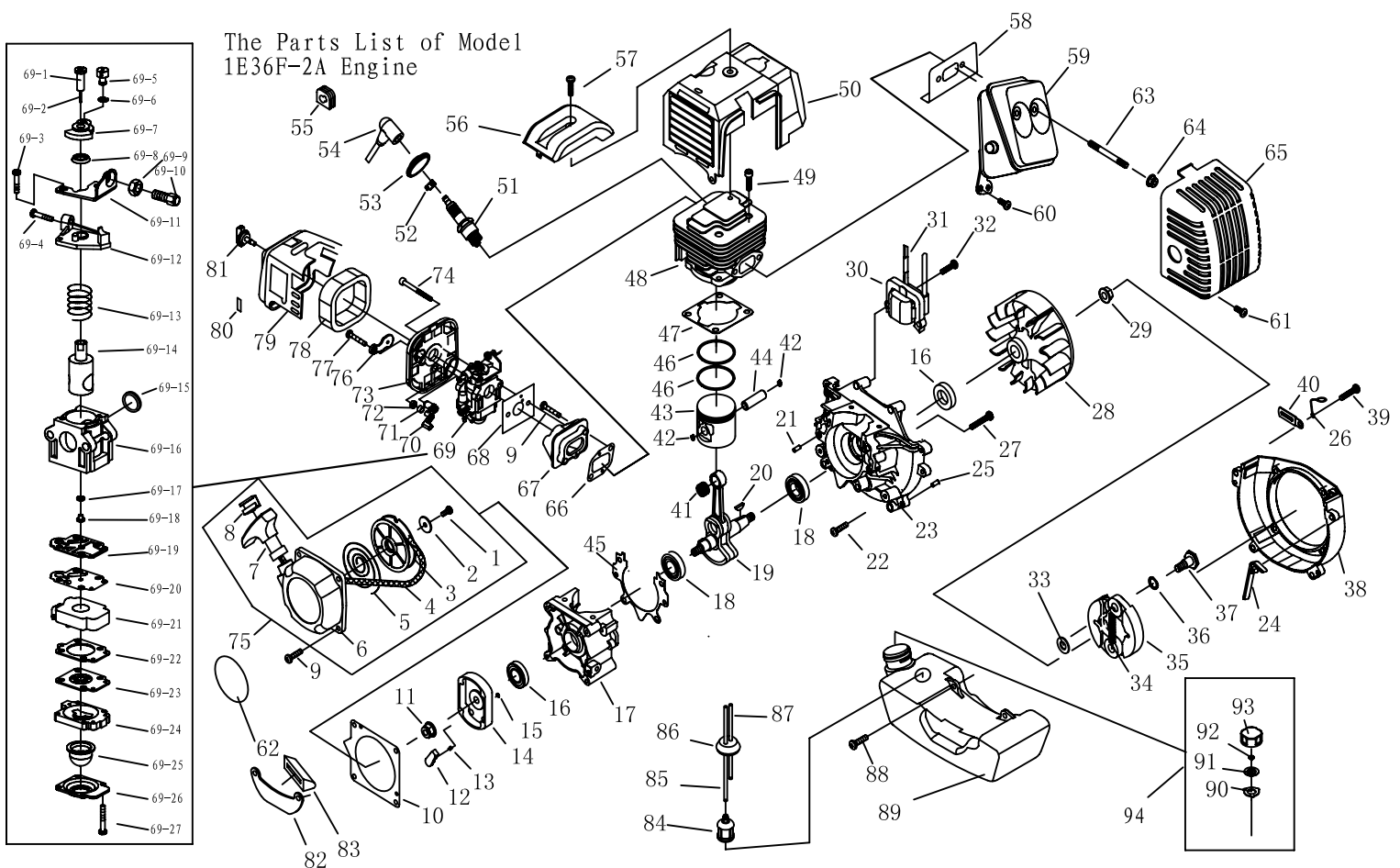


The Parts List of Model
1E36F-2A Engine



NO.	Part No.	Part Name	Qty.	NO.	Part No.	Part Name	Qty.	NO.	Part No.	Part Name	Qty.	NO.	Part No.	Part Name	Qty.
1	GB67	Screw M5 × 12	1	31	1E36F-2. 3. 1	Cord Comp.	1	61	GB9074. 4	Screw M5 × 12	1	69-22		Gasket Diaphragm	1
2	1E40F-5. 11-2	Washer	1	32	GB9074. 13	Bolt M5 × 20	2	62	1E36F-2-10	Label	1	69-23		Diaphragm	1
3	1E40F-5. 11-1	Start Rope Reel	1	33	1E36F-3	WasherB	2	63	1E36F-2-9	Bolt	2	69-24		Body Purge	1
4		Rope	1	34	1E40F-5. 6-1	Spring	1	64	GB6177	Nut M5	2	69-25		Pump Priming	1
5	1E40FP-3Z. 4-7	Recoil Spring	1	35	1E40F-5. 6. 1	Expander	2	65	1E36F-2. 7	Muffler Cover	1	69-26		Cover Pump	1
6	1E40F-5. 11. 1	Start Cover Ass'y	1	36	1E40F-5-11	Washer	2	66	1E36F-2-2	Gasket	2	69-27	GB/T818	Screw M3 × 22	4
7	1E40FP-3Z. 4-2	Start Handle	1	37	1E40F-5-12	Screw Pin	2	67	1E36F-2A-2	Admitting Pipe	1	70	1E34F. 1-2	CHOKER HANDLE	1
8	1E40FP-3Z. 4-10	Ring	1	38	1E36F-2-8	Fan Cover	1	68	1E36F-2A-1	Gasket	1	71	1E34F. 1-7	Stop ring	1
9	GB9074. 4	Screw M5 × 20	6	39	GB9074. 13	Bolt M5 × 20	4	69	1E36F-2A. 1	Carburetor	1	72	GB/T6172	Nut 4	1
10	1E40F-5-10	Gasket	1	40	1E40F-3A. 9	Clip	1	69-1		Thimble	1	73	1E34F. 1. 1	Cleaner inside cover	1
11	GB6170	Nut M8	1	41	1E36F-2. 4. 1	Bearing	1	69-2		Main Needle	1	74	GB/T9074. 4	Screw M5x50	2
12	1E46FP. 4-2	Start Claw	1	42	1E36F. 10-2	Ring	2	69-3		Screw	1	75	1E40F-5. 11	Starter	1
13	1E36F. 1. 2-2	Start Spring	1	43	1E36F-2. 4. 2	Piston	1	69-4	GB/T823	Screw M3 × 10	2	76	1E34F. 1-3	CHOKER	1
14	1E40F-5. 7-1	Start Reel	1	44	1E36F. 10-1	Piston Pin	1	69-5		Swivel	1	77	GB/T845	Screw ST4. 2X12	1
15	GB896	Stop Ring 4	1	45	1E36F-2. 6-3	Gasket	1	69-6	GB896	Ring 3. 5	1	78	1E34F. 1-1	Cleaner Outside Cover	1
16	1E36F. 2	Oil-seal	2	46	1E36F-2. 10-1	Piston Ring	2	69-7		Turn Frame	1	79	1E34FA. 1-1	Filter Net	1
17	1E36F-2. 6-2	Crank Case	1	47	1E36F-2-6	Gasket	1	69-8		Airproof Ring	1	80	1E40F-3A. 3-5	Label	1
18	GB/T276	Bearing 6201/P5	2	48	1E36F-2-4	Cylinder	1	69-9	GB/T6172	Nut M6	1	81	1E34F. 1. 2	Screw	1
19	1E36F-2. 4. 3	Crank Shaft	1	49	GB/T70. 1	Screw M5 × 18	4	69-10		Nut, Adjuster	1	82	1E40F-5A-4	Stand	1
20	GB1099	Key 3x5x13	1	50	1E36F-2. 5	Guide Cover Ass'y	1	69-11		Bracket	1	83	1E40F-5A-2	Rubber Cover	1
21	GB119	Pin B5 × 12	2	51	L6 (LD)	Spark Plug	1	69-12		Fixed Board	1	84	1E34F. 9. 2-3	Cleaner Cover	1
22	GB9074. 4	Screw M5 × 12	2	52	1E40F-3A. 8-2	Spring	1	69-13		Spring	1	85	1E36F-2A. 3. 1-2	Fuel Pipe	1
23	1E36F-2. 6-1	Crank Case	1	53	1E34F. 5-3	Plug Cap	1	69-14		Column	1	86	1E36FF. 8. 1-1	Plug	1
24	1E36F-2-11	Flash Pan	1	54	1E34F. 5-2	Cap	1	69-15		Ring	1	87	1E36F-2A. 3. 1-1	Fuel Tank	1
25	GB119	Pin B4 × 10	2	55	1E40F-5. 3-1	Plug	1	69-16		OverBody	1	88	GB/T9074. 4	Screw M5 × 16	2
26	1E40F-5-15	Stand	1	56	1E36F-2-7	Cover	1	69-17		O Ring	1	89	1E36F-2A. 3-1	Fuel Tank	1
27	GB9074. 4	Screw M5 × 30	4	57	GB9074. 4	Screw M5 × 20	1	69-18		Pinhole	1	90	EB-415. 4. 1. 1-3	Stand	1
28		MAGNETO ROTOR COMP.	1	58	1E36F-2-5	Gasket	1	69-19		Gasket, Pump	1	91	EB-415. 4. 1. 1-2	Gasket	1
29	GB6177	Nut M8	1	59	1E36F-2. 2	Muffler	1	69-20		Diaphragm, Pump	1	92	EB-415. 4. 1. 1-1	Airscop	1
30		IGNITION COIL COMP.	1	60	GB9074. 4	Screw M5 × 12	1	69-21		Mid-body	1	93	EB-415. 4. 1-1	Fuel Tank Lid	1
												94	EB-415. 4. 1	Lid ASS' Y	1