



Parts Manual

Mfg. No: 2691218-00
4175 Series SLT100, 17.5 Gross HP B&S

1691319 - Suitcase Weights, 33Lbs.
1694922 - Weight Carrier, Rear.
1696073 - Catcher, Clean Sweep Twin, 38" & 42"
1695597 - Front Bumper Kit.
1696374 - Grass Mulcher Kit, 42"

Not For
Reproduction

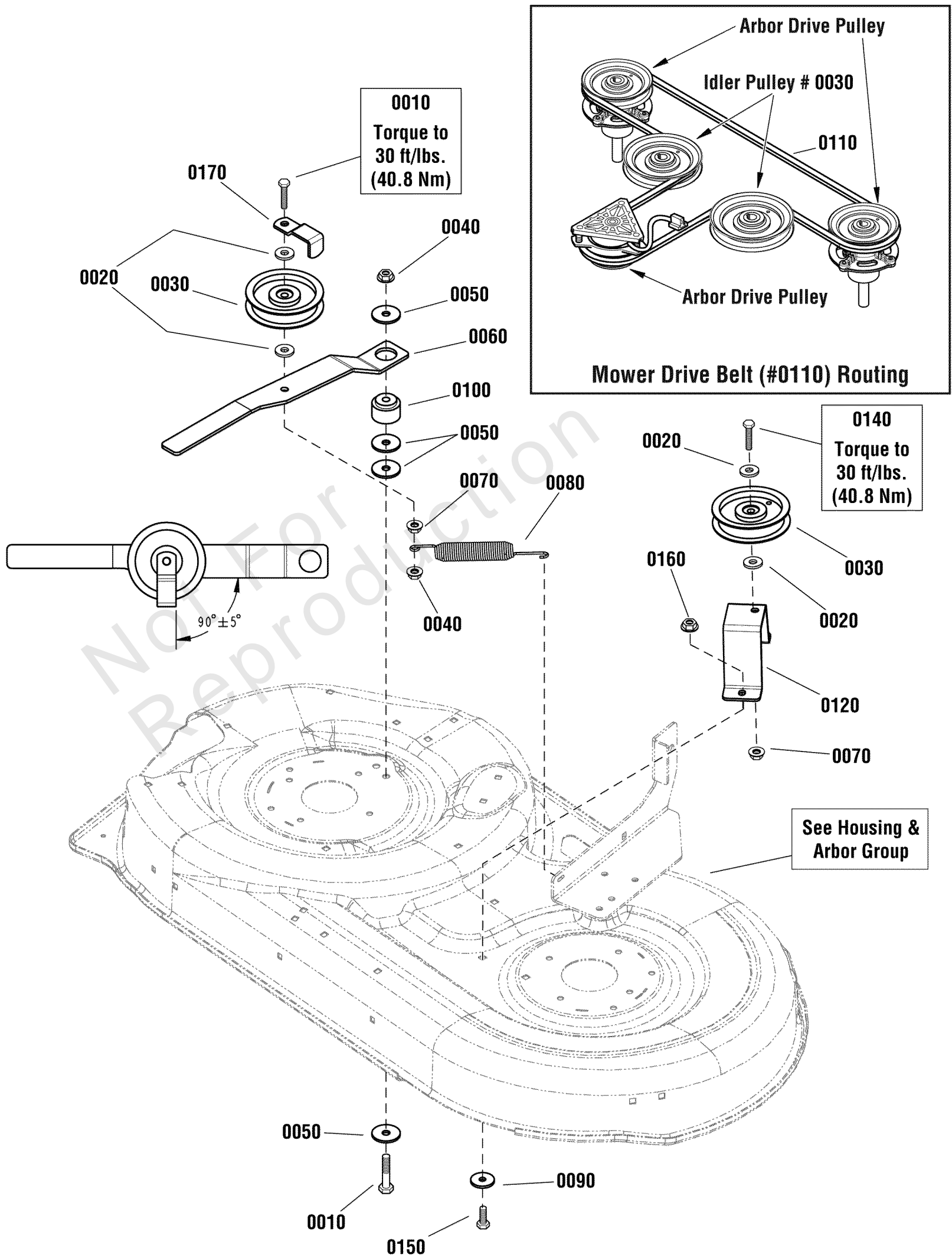
Model Components	Page
42" (107cm) Mower Deck - Clutch Group (2988797).....	4
42" (107cm) Mower Deck - French Guard Group (2991489).....	6
42" (107cm) Mower Deck - Height Adjustment (2990346).....	8
42" (107cm) Mower Deck - Housing, Arbors & Blades Group (2990114).....	10
Controls Group.....	12
Decals Group.....	14
Electrical Group.....	16
Engine Group - Briggs & Stratton.....	18
Frame & Front Axle Group.....	20
French Guard Group.....	24
Hood Grille & Dash Group.....	26
Lift Group - Manual.....	28
Seat Deck & Fuel Tank Group.....	30
Steering Group.....	32
Transmission Group - Hydro Gear.....	34
Transmission SERVICE PARTS - Hydro-Gear.....	36
Wheels & Tires Group.....	40
Torque Specification Chart.....	42

Not For
Reproduction

42" (107cm) Mower Deck - Clutch Group (2988797)

Note: Unless noted otherwise, use the standard torque specifications

Mfg. No: 2691218-00



42" (107cm) Mower Deck - Clutch Group (2988797)

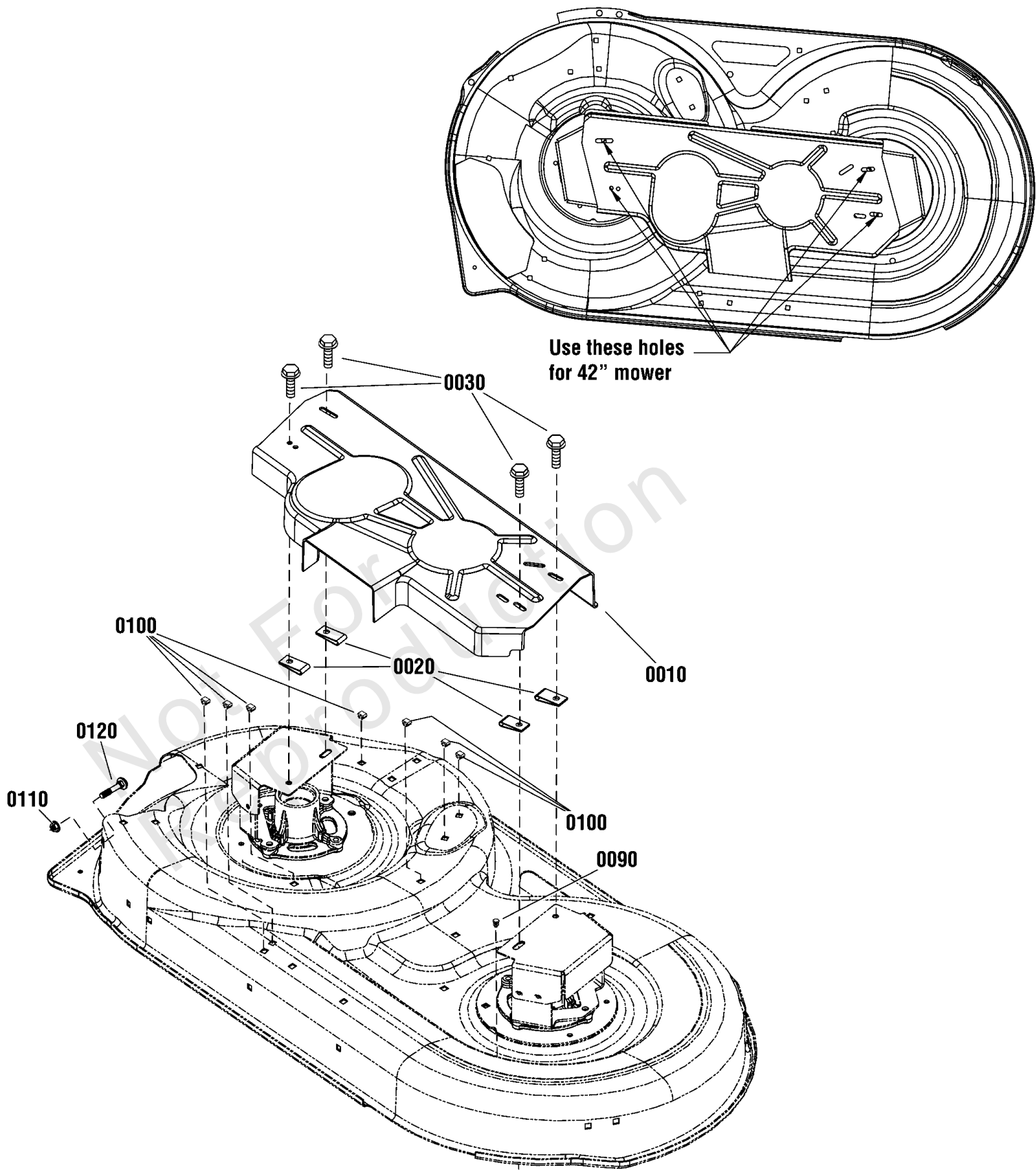
REF NO	PART NO	QTY	DESCRIPTION
0010	1922130SM	2	CAPSCREW, Hex Head, 3/8-16 x 2-1/4, G5
0020	1922755SM	4	WASHER, 3/8
0030	7018574SM	2	IDLER, Flat, 4 1/8
0040	1960339SM	2	NUT, Hex Flange, 3/8-16
0050	1924356SM	4	WASHER, 3/8
0060	1731944ASM	1	ARM, Idler
0070	1931211SM	2	NUT, Hex Flange, Whiz Lock, 3/8-16
0080	1731311SM	1	SPRING, Extension, 7-3/4"
0090	1933468SM	2	WASHER, 5/16
0100	1729007SM	1	SPACER, 3/8 ID x 1-1/2 OD x 1"
0110	1732955SM	1	V-BELT, A-Wedge, HA, 94.45 LG
0120	1731911ASM	1	SUPPORT, Idler
0140	1921971SM	1	CAPSCREW, Hex Head, 3/8-16 x 1-3/4, G5
0150	1923325SM	2	CAPSCREW, Hex Head, 5/16-18 x 7/8, G5
0160	1931277SM	2	NUT, Hex Flange, Whiz Lock, 5/16-18
0170	1732884ASM	1	GUARD, Spring

Not For
Reproduction

42" (107cm) Mower Deck - French Guard Group (2991489)

Note: Unless noted otherwise, use the standard torque specifications

Mfg. No: 2691218-00



42" (107cm) Mower Deck - French Guard Group (2991489)

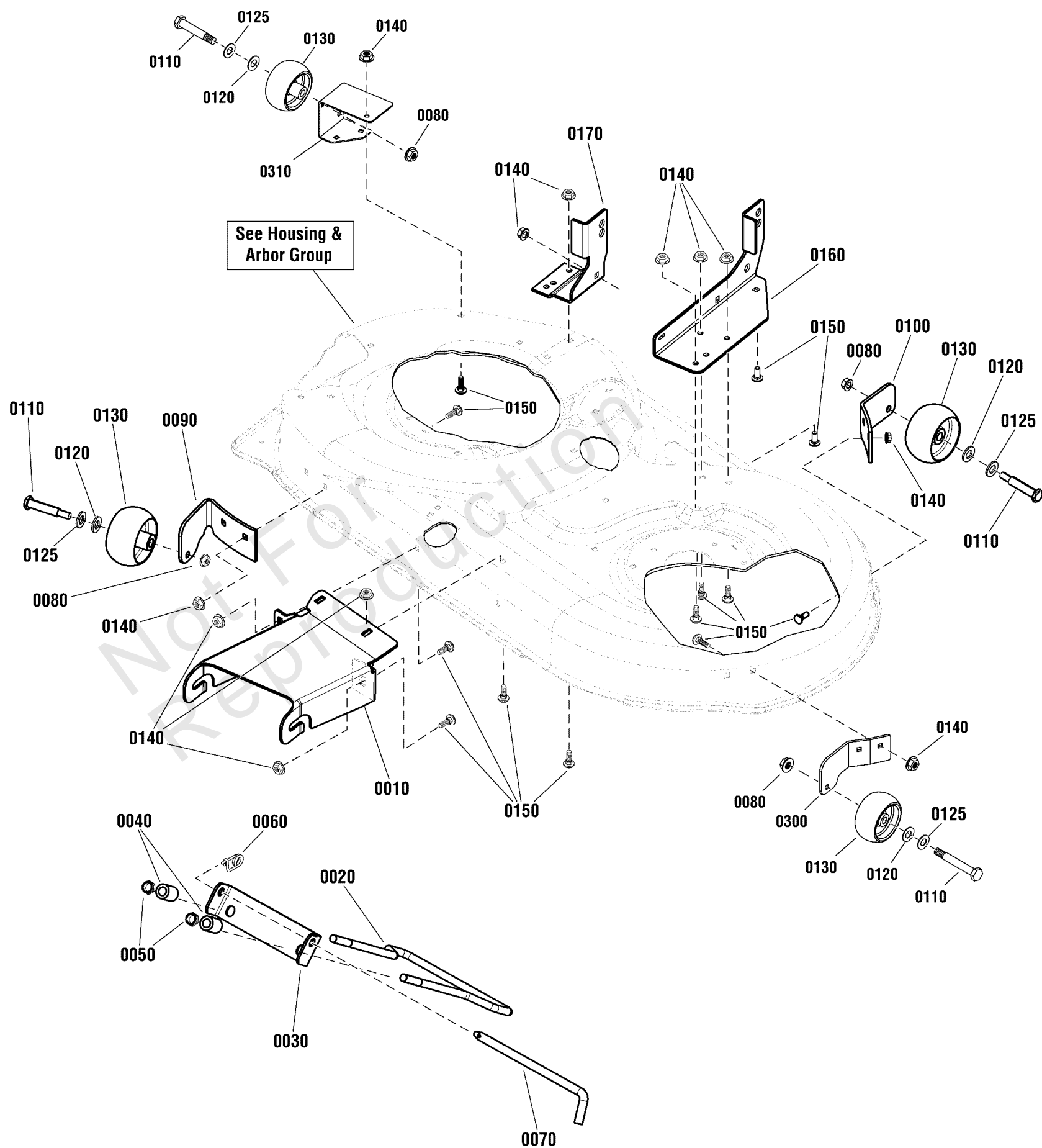
REF NO	PART NO	QTY	DESCRIPTION
0010	1751850YP	1	GUARD, Mower Housing
0020	1926018SM	4	NUT, Speed, 1/4
0030	1960295SM	4	SCREW, Hex Head, 1/4-20 x 5/8
0090	7046780SM	1	PLUG, Hole, .44" OD
0100	1705115SM	7	PLUG, Hole, 1/2 x 5/16 Inch, Rectangular
0110	703409	1	NUT, Serrated Lock Flange, 5/16-18
0120	703185	1	BOLT, Carriage, 5/16-18 X 3/4

Not For
Reproduction

42" (107cm) Mower Deck - Height Adjustment (2990346)

Note: Unless noted otherwise, use the standard torque specifications

Mfg. No: 2691218-00



42" (107cm) Mower Deck - Height Adjustment (2990346)

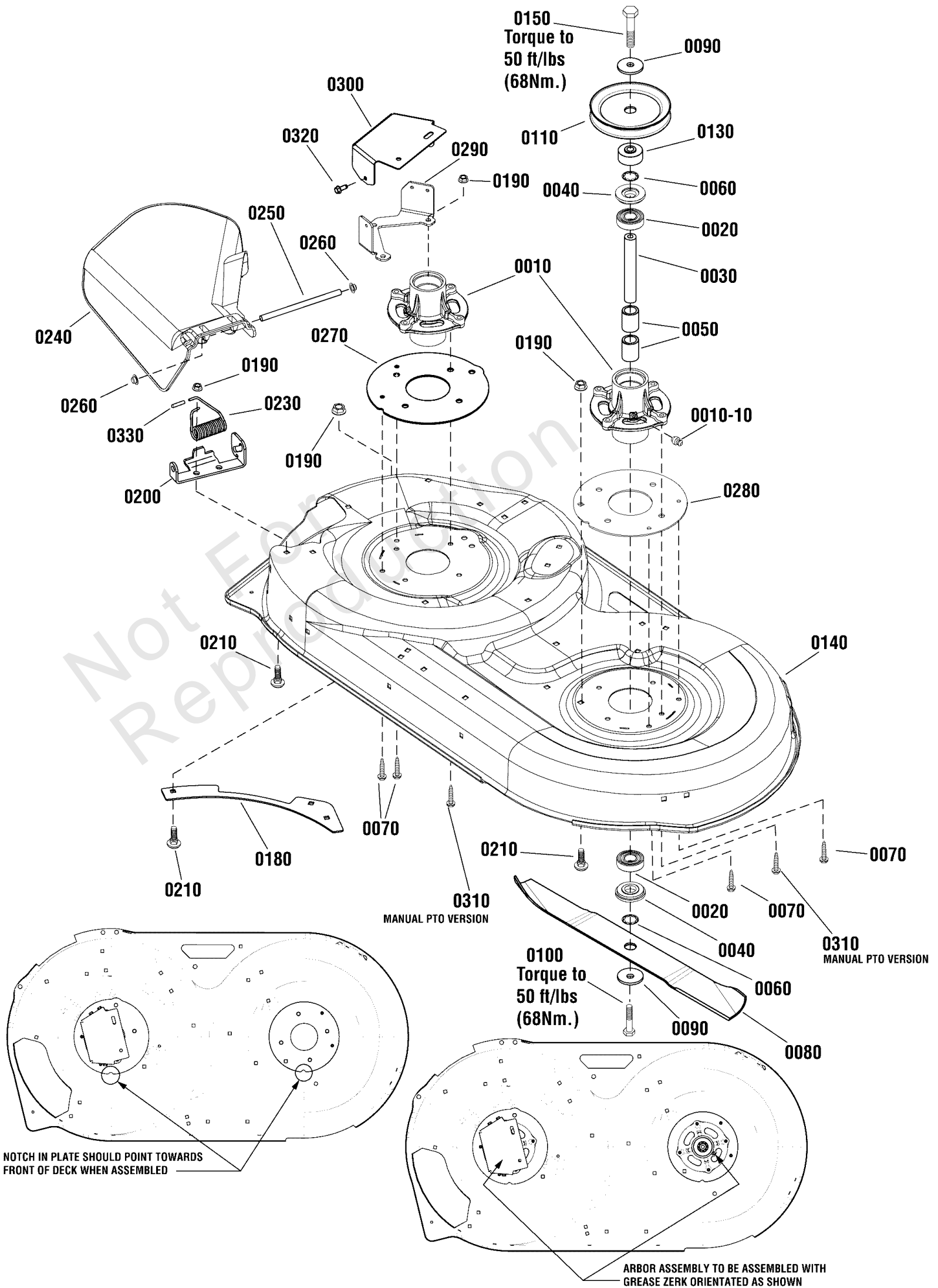
REF NO	PART NO	QTY	DESCRIPTION
0010	1731966BMYP	1	HITCH, Front
0020	1730097SM	1	ROD
0030	1730221ASM	1	HANGER, Front
0040	1679166SM	2	SPACER, 1/2 x 7/8 x 1 3/16
0050	1960379SM	2	NUT, Hex Lock, 1/2-13
0060	703852	1	PIN, Retainer, 5/16 x 3/8
0070	1731414SM	1	ROD, Latch
0080	703158	4	NUT, Hex Flange, ESNA, 3/8-16
0090	1731402ASM	1	SUPPORT, Gauge Wheel, RH
0100	1731403ASM	1	SUPPORT, Gauge Wheel, LH
0110	2108765SM	4	BOLT, Wheel, 3/8-16 x 2-3/4
0120	703853	4	WASHER, 1/2
0125	0020X3MA	4	WASHER, Spring, 1/2
0130	1714760SM	4	WHEEL
0140	703409	17	NUT, Serrated Lock Flange, 5/16-18
0150	703185	17	BOLT, Carriage, 5/16-18 X 3/4
0160	1753662BMYP	1	SUPPORT, Mower, LH
0170	1753663BMYP	1	SUPPORT, Mower, RH
0300	1732258BMYP	1	BRACKET, Gauge Wheel, Front, LH
0310	7301171BMYP	1	BRACKET, Gauge Wheel, Rear, RH

Not For
Reproduction

42" (107cm) Mower Deck - Housing, Arbors & Blades Group (2990114)

Note: Unless noted otherwise, use the standard torque specifications

Mfg. No: 2691218-00



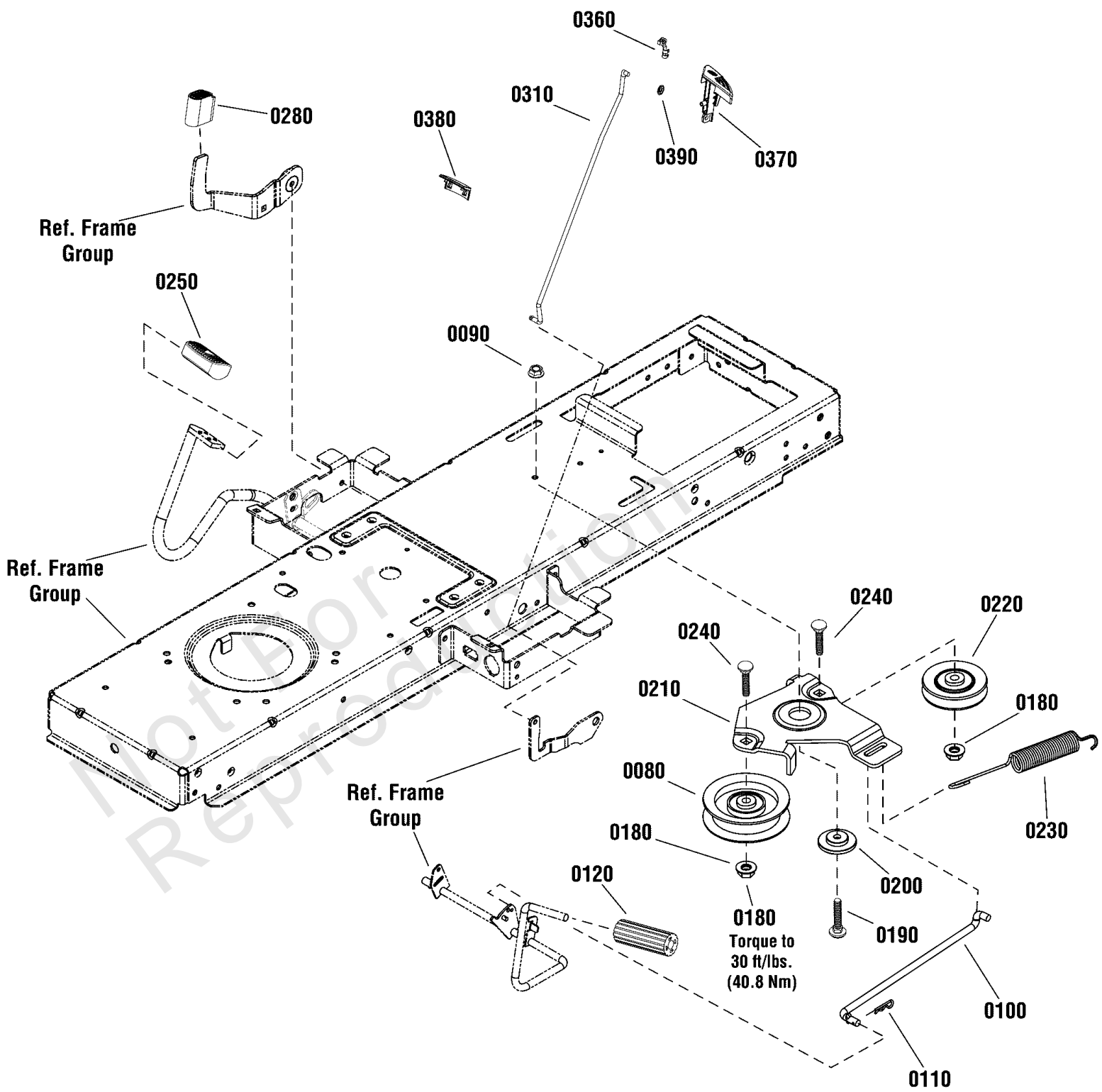
42" (107cm) Mower Deck - Housing, Arbors & Blades Group (2990114)

REF NO	PART NO	QTY	DESCRIPTION
0010	1735573YP	2	HOUSING, Spindle
0010-10	1704314SM	1	FITTING, Lubrication
0020	1735399YP	4	BEARING, Ball, 20mm
0030	1735326YP	2	SHAFT, Spindle
0040	1735323YP	4	SHIELD, Arbor
0050	1735328YP	4	SPACER, Bearing
0060	1960766YP	4	RING, Self Lock
0070	1960373SM	4	SCREW, Hex Washer Head, Taptite, 5/16-18 x 1
0080	1752100AYP	2	BLADE, 42" Mower
0090	1656916SM	4	WASHER, Spring, 1/2
0100	1920676SM	2	CAPSCREW, Hex Head, 7/16-14 X 1
0110	1737835YP	2	PULLEY, V, Deep Groove
0130	1737457YP	2	SPACER, Pulley
0140	1736504C	1	HOUSING, Mower Deck, 42
0150	703579	2	CAPSCREW, Hex Head, 7/16-14 x 1-1/4, G8
0180	721083BM	2	PLATE, Rear
0190	1931277SM	10	NUT, Hex Flange, Whiz Lock, 5/16-18
0200	721369A	1	BRACKET, Hinge
0210	1931333SM	6	BOLT, Carriage, Short Neck, 5/16-18 x 3/4, G5
0230	720154	1	SPRING, Torsion
0240	721339	1	DEFLECTOR & SUPPORT ASSEMBLY
0250	721371	1	ROD, Deflector
0260	1960093SM	2	NUT, Push Pal, 3/8
0270	1750457BMYP	1	PLATE, Spindle, RH
0280	1750458BMYP	1	PLATE, Spindle, LH
0290	1752065BMYP	2	BRACKET, Guard Mount
0300	1752034BMYP	2	COVER, Mower Spindle
0310	1930600SM	8	SCREW, Hex Washer Head, Taptite, 5/16-18 x 1-1/2
0320	722866	6	SCREW, Hex, 1/4-20 x 5/8
0330	5023489SM	1	CAP, PROTECTOR, .120 ID

Controls Group

Note: Unless noted otherwise, use the standard torque specifications

Mfg. No: 2691218-00



Controls Group

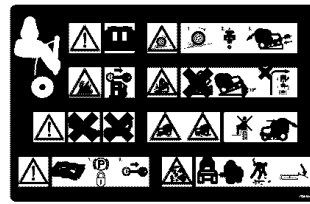
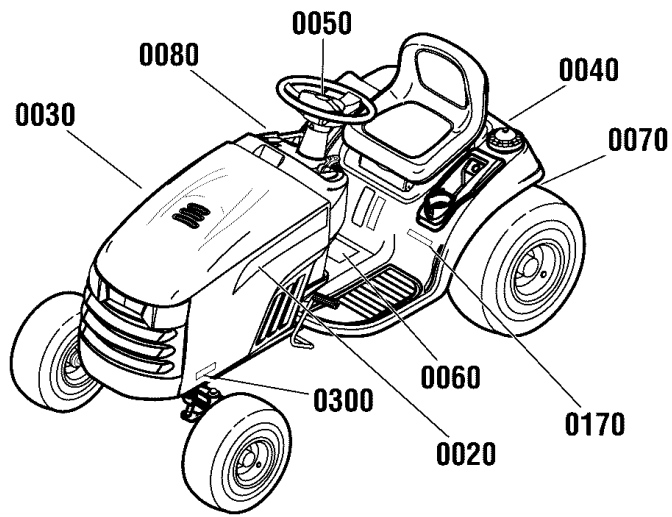
REF NO	PART NO	QTY	DESCRIPTION
0080	1728000SM	1	PULLEY, Idler
0090	703409	1	NUT, Serrated Lock Flange, 5/16-18
0100	1727254SM	1	ROD, Brake Return
0110	1722460SM	1	HAIRPIN
0120	1727261SM	1	PEDAL, Brake
0180	703158	2	NUT, Hex Flange, 3/8-16
0190	703800	1	BOLT, Carriage, 5/16-18 X 1
0200	1727935SM	1	SPACER, Pivot
0210	1727894SM	1	BRACKET, Idler
0220	1728001SM	1	PULLEY, 3"
0230	1729620SM	1	SPRING, Extension
0240	1931352SM	2	BOLT, Carriage, Short Neck, 3/8-16 x 1-1/2
0250	1721675SM	1	PAD, Foot Pedal Forward
0280	1727259SM	1	PAD, Foot Pedal Reverse
0310	1727267SM	1	ROD, Parking Brake
0360	1728111SM	1	CLIP, Linkage
0370	1728089SM	1	KNOB, Brake
0380	885686YP	1	PLUG, Cruise
0390	703826	2	BOLT, Pushnut, 1/4

Not For
Reproduction

Decals Group

Note: Unless noted otherwise, use the standard torque specifications

Mfg. No: 2691218-00



0060



0080



0070



0020



0040



0170



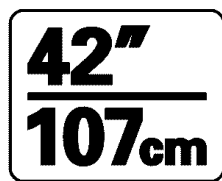
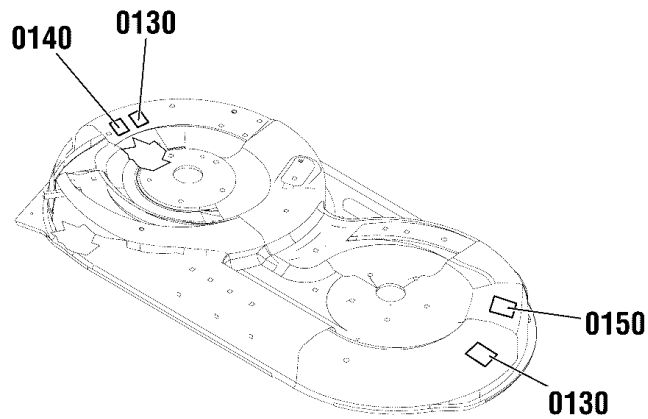
0030



0050



0300



0150



0130



0140

Decals Group

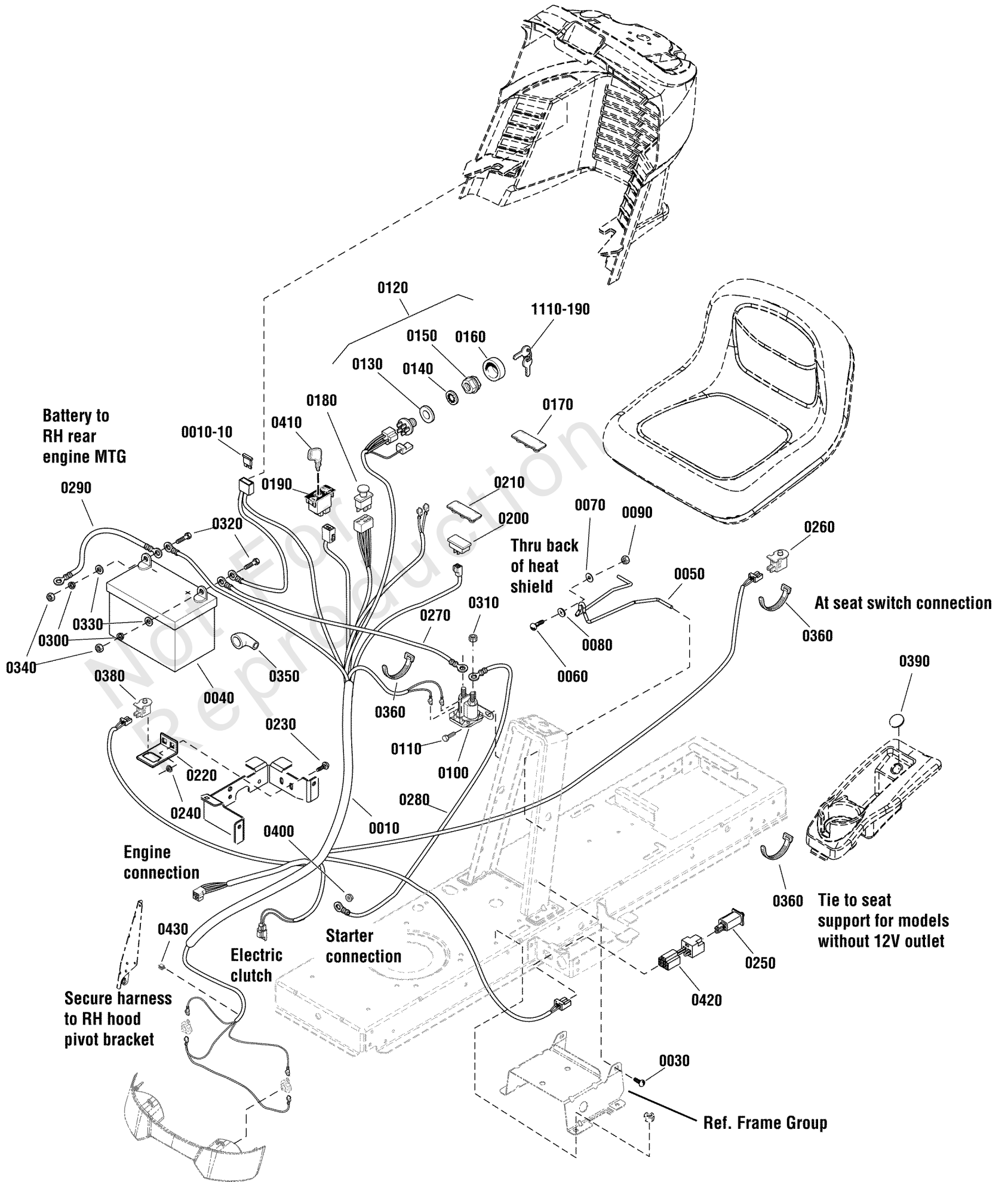
REF NO	PART NO	QTY	DESCRIPTION
0020	1731390SM	1	DECAL, Simplicity, LH
0030	1731391SM	1	DECAL, Simplicity, RH
0040	1722551SM	1	DECAL, Simplicity Icon
0050	1731418SM	1	DECAL, Simplicity Branding
0060	1750191YP	1	DECAL, Tunnel
0070	1730202SM	1	DECAL, Transmission Tow / Release Lever
0080	1722806SM	1	DECAL, Ignition Switch
0130	5102420YP	2	DECAL, Danger, Cut Hand/Foot
0140	5102457YP	1	DECAL, Thrown Objects
0150	1755716YP	1	DECAL, Deck, 42"/107CM
0170	1722772SM	1	DECAL, Regent
0300	1757689YP	1	DECAL, Model

Not For
Reproduction

Electrical Group

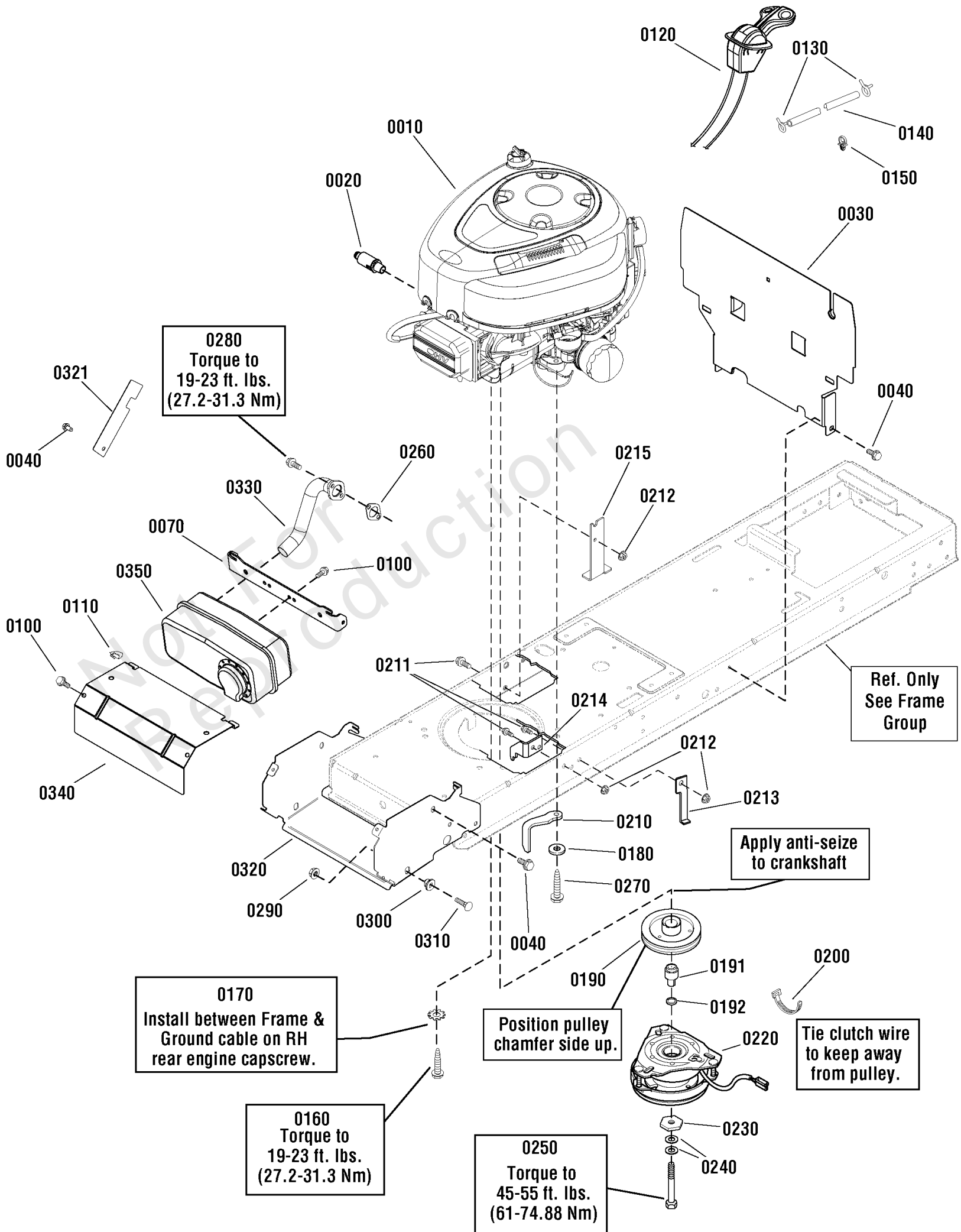
Note: Unless noted otherwise, use the standard torque specifications

Mfg. No: 2691218-00



Electrical Group

REF NO	PART NO	QTY	DESCRIPTION
0010	1739597YP	1	WIRING HARNESS -(Includes Ref. 0010-10)
0010-10	1731957SM	1	FUSE, Wiring Harness
0030	1930601SM	4	CAPSCREW, Hex Washer Head, Taptite, 5/16-18 x 5/8
0040	-----	1	BATTERY, L Post, 12 Volt 6 Cell 340CCA -(Not a serviceable part)
0050	1730007SM	1	HOLD DOWN, Battery
0060	1931318SM	1	BOLT, Carriage, 1/4-20 x 7/8 G5
0070	1960353SM	1	WASHER, 1/4
0080	1960518SM	1	PUSHNUT, 1/4
0090	1920397SM	1	NUT, Hex Lock, ESNA Light, 1/4-20
0100	1728963SM	1	SOLENOID
0110	1925003SM	2	CAPSCREW, Hex Washer Head, Taptite, 1/4-20 x 1/2
0120	1737853YP	1	SWITCH ASSEMBLY, Ignition -(Includes Ref. Nos. 0130, 0140, 0150 & 0160)
0130	2101025SM	1	WASHER, 5/8
0140	1960547SM	1	LOCKWASHER, Internal Tooth
0150	1717549SM	1	NUT, Hex Flange, 5/8-32
0160	1717550SM	1	COVER, Switch
0170	1729993SM	1	PLUG, Hour Meter
0180	1722887SM	1	SWITCH, PTO, Push/Pull
0190	1726556SM	1	SWITCH, RMO Module Only
0200	1716951SM	1	SWITCH, Headlight
0210	1722611SM	1	PLUG, Hole
0220	1728026SM	1	SUPPORT, RMO Switch
0230	1931333SM	2	BOLT, Carriage, 5/16-18 x 3/4, G5
0240	1931277SM	2	NUT, Hex Flange Whiz Lock Small, 5/16-18
0250	7022886YP	1	SWITCH, Push Button (NO / NC)
0260	7023354YP	1	SWITCH, Seat, Push Button (NC)
0270	1716549SM	1	CABLE-# 6 x 10
0280	1721830SM	1	CABLE, # 6 x 25
0290	1713163SM	1	CABLE, # 6 x 26
0300	2816964SM	2	LOCKWASHER, 1/4
0310	2860750SM	2	NUT, Hex, KEPS, 5/16-24
0320	2823341SM	2	CAPSCREW, Hex Head, 1/4-20 x 3/4, G5
0330	2821319SM	2	WASHER, 1/4
0340	2816622SM	2	NUT, Hex, 1/4-20
0350	1677296SM	1	BOOT, Insulator
0360	1701011SM	3	TIE, Self Locking
0380	1732004SM	1	SWITCH, Push Button (NO)
0390	1732007SM	1	PLUG, Hole
0400	1960294SM	1	NUT, Hex Flange Whiz Lock Small, 1/4-20
0410	1726557SM	1	KEY, RMO Module Plastic
0420	1734025SM	2	WIRES & CONNECTORS ASSEMBLY, Jumper
0430	2172434SM	1	CLIP, Wire
1110-190	1737837YP	1	KEYS, Ignition



Engine Group - Briggs & Stratton

REF NO	PART NO	QTY	DESCRIPTION
0010	-----	1	*ENGINE, 17.5HP B&S, Single, Choke-A-Matic -(Engine Model: 31R777-0022-B1)
0020	1750159YP	1	VALVE, Drain
0030	1738380AYP	1	HEAT SHIELD, Engine
0040	703949	9	SCREW, Washer Head, 5/16-18 X 5/8
0070	1727982BMYP	1	SUPPORT, Muffler
0100	704130	4	SCREW, Hex Head, 1/4-20 X 1/2
0110	2172434SM	1	CLIP, Wire, .390 Dia.
0120	1751734YP	1	CONTROL Throttle, Choke-a-Matic
0130	93053B	2	CLAMP, Hose
0140	706024	1	HOSE, Fuel, Low Perm, 1/4ID x 1/2OD x 49.5 Lg
0150	1730268SM	2	CLIP, Hose, 1/2 Dia., Push In
0160	2827187SM	2	CAPSCREW, Hex Washer Head, Taptite, 3/8-16 x 1
0170	703864	1	WASHER, External, 3/8
0180	703878	1	WASHER, Flat, 13/32 x 7/8 x .083
0190	1732576SM	1	PULLEY & HUB ASSEMBLY, Engine
0191	885679YP	1	SPACER, Electric Clutch
0192	885810YP	1	SPACER, Electric Clutch, Lower
0200	703586	1	TIE, Cable
0210	1737421BMYP	1	**GUIDE, Belt
0211	704287	4	CAPSCREW, Hex Head, 5/16-18 x 3/4, GR5
0212	703409	6	NUT, Serrated Lock Flange, 5/16-18
0213	1757405BMYP	1	BRACKET, Upstop, Lower Clutch
0214	885535AYP	1	BRACKET, Electric Clutch Torque
0215	1737404BMYP	1	BRACKET, Upstop
0220	1736105SM	1	CLUTCH, Ogura
0230	1708264SM	1	WASHER, Hex
0240	1960769YP	2	WASHER, Belleville
0250	7102075YP	1	CAPSCREW, Hex Head, 7/16-20 x 5, G5
0260	1731214SM	1	GASKET, Exhaust
0270	2828635SM	2	SCREW, Taptite, 3/8-16 X 1 1/4
0280	690341	2	SCREW
0290	703409	2	NUT, Serrated Lock Flange, 5/16-18
0300	1728086SM	2	PIVOT, Hood, Powdered Metal
0310	703800	2	BOLT, Carriage, 5/16-18 X 1
0320	1738265AYP	1	SUPPORT, Muffler & Hood Pivot
0321	1736025BMYP	1	GUARD, Pulley, Rear
0330	1728959SM	1	PIPE, Exhaust, Flanged, 1-1/4 OD
0340	1727996BMYP	1	SHIELD, Heat
0350	1727993SM	1	MUFFLER, Briggs & Stratton, Single

Footnotes:

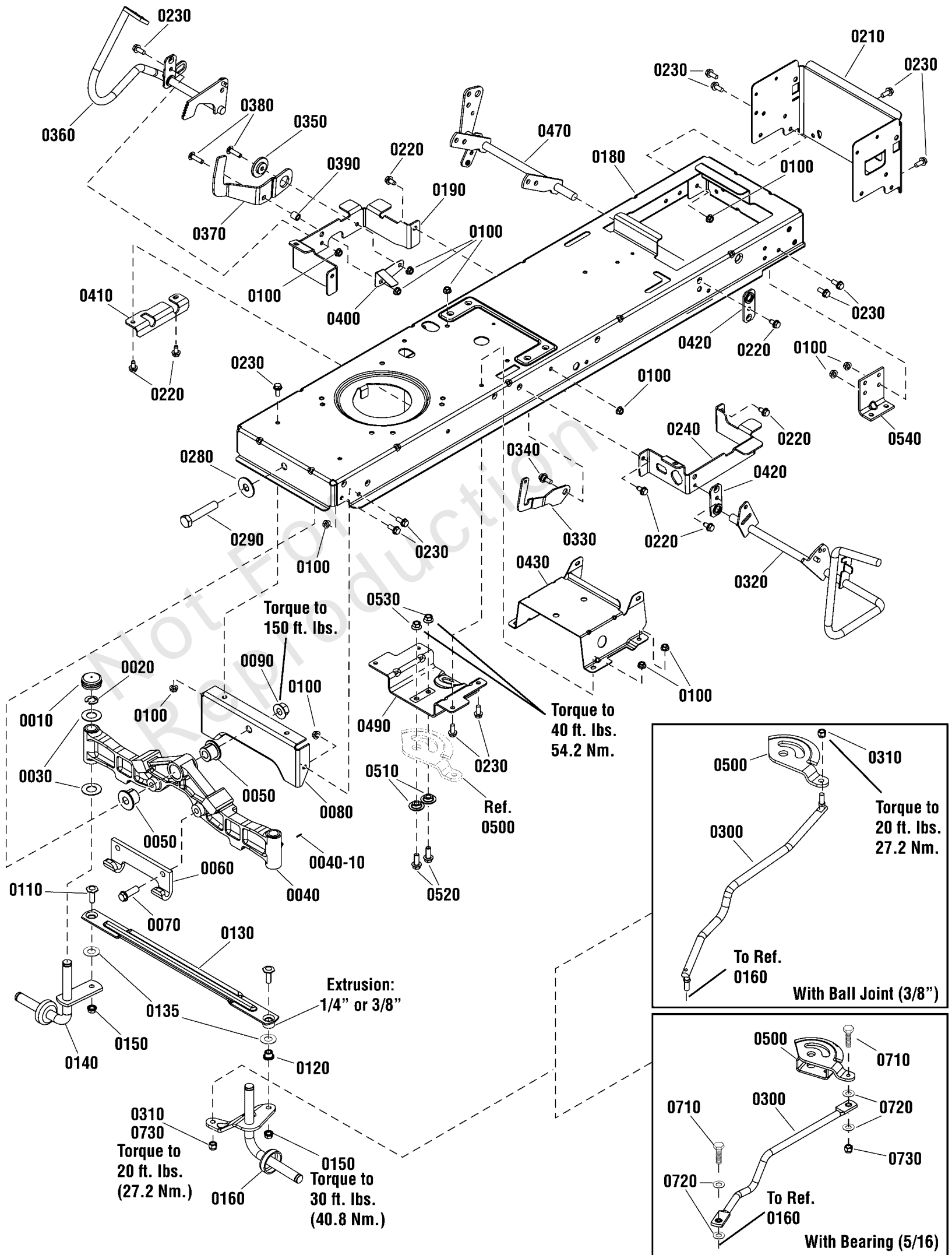
Note:** Used on serial numbers 2016732404 and below

Note:* See your local Briggs & Stratton distributor for parts and service.

Frame & Front Axle Group

Note: Unless noted otherwise, use the standard torque specifications

Mfg. No: 2691218-00



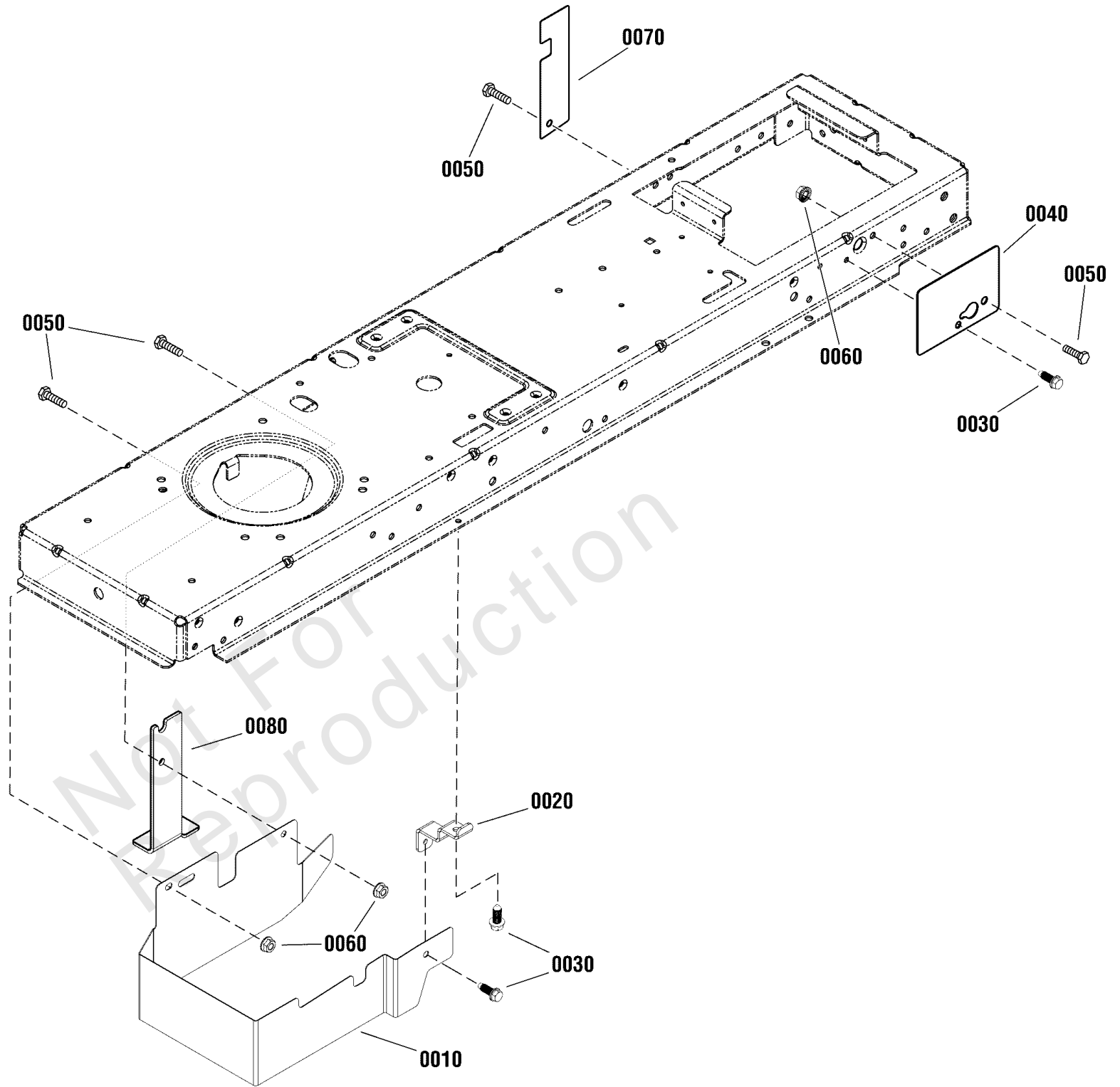
Frame & Front Axle Group

REF NO	PART NO	QTY	DESCRIPTION
0010	1734135	2	CAP, Hub
0020	1611710	2	RING, Klipring Extension
0030	1960160	4	WASHER, 3/4
0040	1728018	1	AXLE, Front Iron Casting Machined
0040-10	1704314	3	FITTING, Zerk
0050	1730186	2	BUSHING, Axle Pivot
0060	1721918A	1	HOOK, "J"
0070	1960652	2	CAPSCREW, Hex Whizlock Flange, 7/16-14 x 1-1/2
0080	1727902A	1	PLATE, Axle Support
0090	2860646	1	NUT, Hex Flange Two-Way Lock, 5/8-11
0100	1931277	26	NUT, Hex, Flange Whizlock, 5/16-18
0110	1960032	2	CAPSCREW, Hex Head, 3/8-16 x 1-1/4, .141 Thread G5
0120	1731912	2	BUSHING, Powdered Metal
0130	1728080A	1	TIE ROD, 3/8" extrusion
0130	1751964YP	1	TIE ROD, 1/4" extrusion -(Use with Item 0135)
0135	1960703SM	2	WASHER, 5/8 -(Use with Tie Rod 1751964YP)
0140	1727872A	1	SPINDLE & CUP ASSEMBLY, RH
0150	1930645	2	NUT, Hex, Flange, Locking, 3/8-16
0160	1751922YP	1	WHEEL SPINDLE ASSEMBLY, LH -(Use on Drag Link w/Bearing, 5/16")
0160	1727873A	1	WHEEL SPINDLE ASSEMBLY, LH -(Use on Drag Link w/Ball Joint, 3/8")
0180	-----	1	*FRAME -Note* (Not a serviceable part)
0190	1727904A	1	SUPPORT, Front Footrest R.H.
0210	1731309A	1	SUPPORT, Rear Frame
0220	1930601	9	SCREW, Taptite, 5/16-18 x 5/8
0230	1930591	14	CAPSCREW, Hex Head, Flange Whiz Lock, 5/16-18 x 3/4
0240	1727905A	1	SUPPORT, Front Footrest L.H.
0280	1960035	1	WASHER, Flat, 5/8
0290	2860744	1	CAPSCREW, Hex Head, 5/8-11 x 3-1/4 G5
0300	1727868	1	LINK, Drag, with Ball Joint, 3/8
0300	1738051	1	LINK, Drag, with Bearing, 5/16
0310	1960747	2	NUT, Hex Nylock, 3/8-24
0320	1727252A	1	PEDAL ASSEMBLY, Brake
0330	1735595	1	LATCH, Brake Lock
0340	1729576	1	BOLT, Shoulder, 5/16-18 x 1-1/8
0350	1727935	1	SPACER, Pivot
0360	1727250A	1	PEDAL ASSEMBLY, Forward
0360	1736714A	1	PEDAL ASSEMBLY, Forward -(42" & 46" Models Only)
0370	1727246	1	PEDAL, Reverse
0380	1960223	2	BOLT, Carriage, 5/16-18 x 1-1/4
0390	1728024	2	SPACER, Foot Pedal
0400	1728025	1	ACTUATOR, RMO Switch
0410	1727909	1	BRACKET, Pedal Pivot
0420	1727911	2	PLATE, Bearing
0430	1727282	1	SUPPORT, Battery
0470	1727951A	1	LIFT SHAFT ASSEMBLY
0490	1727940	1	BRACKET, Sector Support
0500	1728027	1	GEAR, Steering, 5/16

Frame & Front Axle Group

REF NO	PART NO	QTY	DESCRIPTION
0500	1751110	1	GEAR, Steering, 3/8
0510	1728122	2	SPACER, Sector Gear
0520	1934654	2	SCREW, Hex Flange, Whiz Lock, 3/8-16 x 1
0530	1931211	2	NUT, Hex Flange, Whiz Lock, 3/8-16
0540	1727903	2	SUPPORT, Transmission
0710	1921977	2	CAPSCREW, Hex Head, 5/16-18 x 1-1/4, G5 -(Use on Drag Link w/Bearing, 5/16")
0720	1924874	4	WASHER, 5/16 -(Use on Drag Link w/Bearing, 5/16")
0730	1935048	2	NUT, Hex Flange, Two Way Lock, 5/16-18 -(Use on Drag Link w/Bearing, 5/16")

Not For
Reproduction



French Guard Group

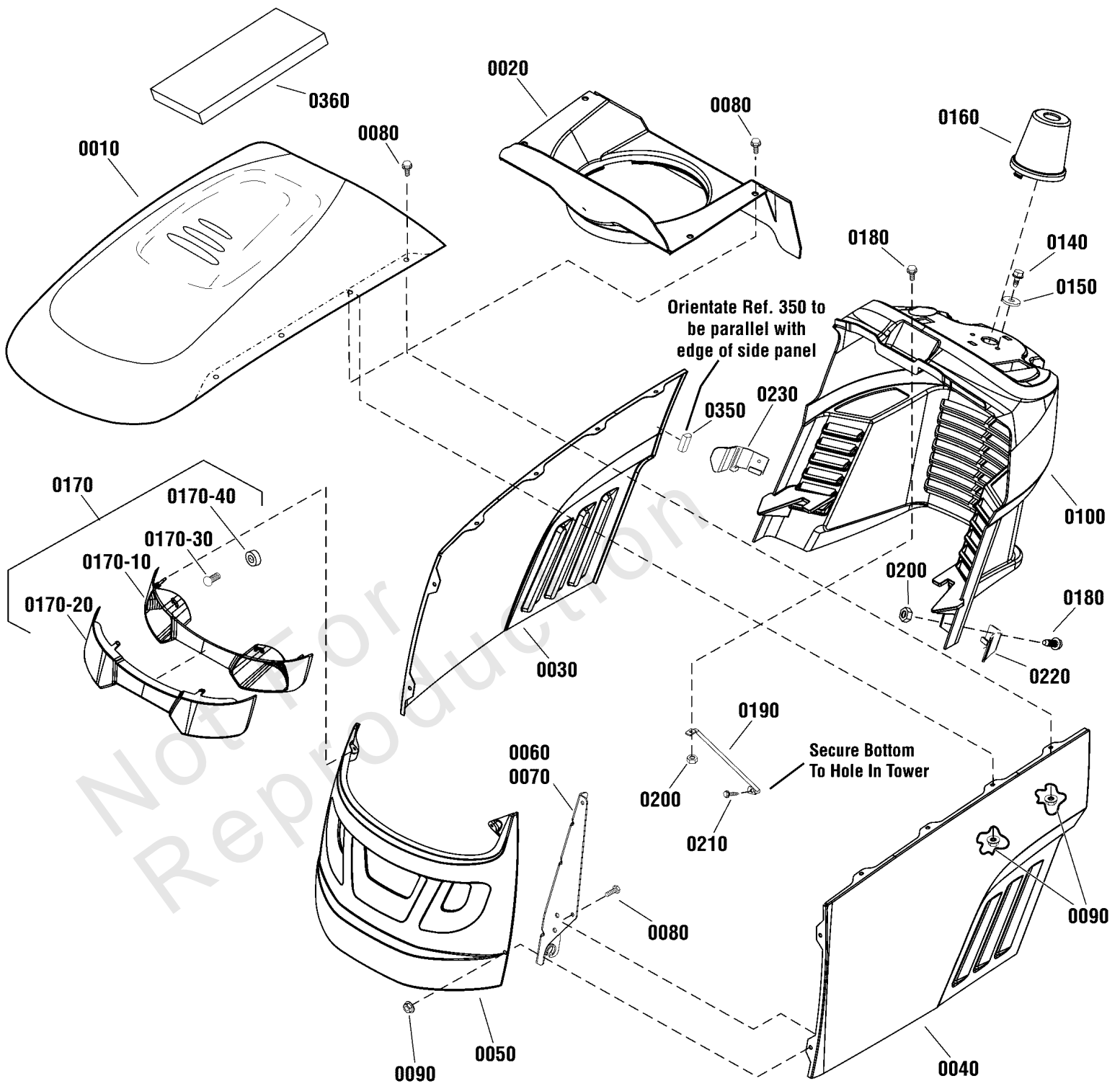
REF NO	PART NO	QTY	DESCRIPTION
0010	1758016BMYP	1	GUARD, Engine Pulley
0020	1752160BMYP	1	BRACKET, Guard Support
0030	703949	3	SCREW, Washer, 5/16-18 x 5/8
0040	1760016CJYP	1	GUARD, Rear
0050	704287	3	CAPSCREW, HexHead, 5/16-18 x 3/4, GR5
0060	703409	3	NUT, Serrated Lock Flange, 5/16-18
0070	1736025BMYP	1	GUARD, Pulley, Rear
0080	1757404BMYP	1	BRACKET, Upstop

Not For
Reproduction

Hood Grille & Dash Group

Note: Unless noted otherwise, use the standard torque specifications

Mfg. No: 2691218-00



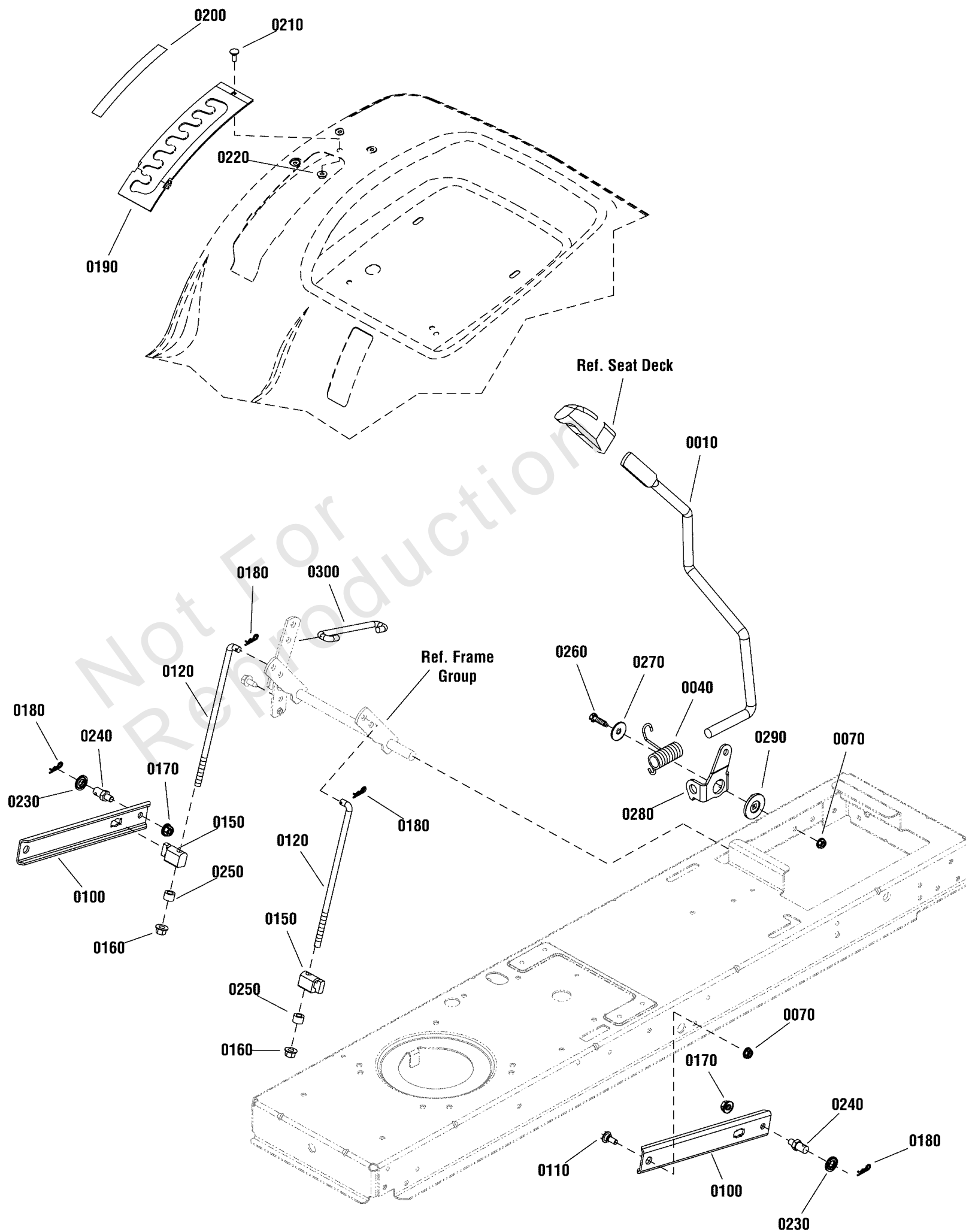
Hood Grille & Dash Group

REF NO	PART NO	QTY	DESCRIPTION
0010	1722110CSM	1	HOOD, W/Loovers
0020	7102326SM	1	DUCT, Air Inlet Plastic
0030	1727294CSM	1	PANEL, Hood, RH Side
0040	1727295CSM	1	PANEL, Hood, LH Side
0050	1727297CSM	1	GRILLE
0060	1727279ASM	1	HINGE, Hood LH
0070	1727280ASM	1	HINGE, Hood RH
0080	1960295SM	12	CAPSCREW, Whizlock, 1/4-20 x 5/8
0090	1930641SM	12	NUT, Hex Flange Whiz, 1/4-20
0100	1727293SM	1	DASHBOARD
0140	1664847SM	2	CAPSCREW, Hex Head, Taptite, 5/16-18 x 3/4
0150	1919381SM	2	WASHER, Plain, 5/16
0160	1727999SM	1	COVER, Steering Shaft Plastic
0170	1727296SM	1	HEADLIGHT ASSEMBLY
0170-10	1728973SM	1	REFLECTOR, Headlight
0170-20	1728974SM	1	LENS, Headlight
0170-30	1677371SM	2	BULB, 1141-12V 21CP
0170-40	1723451SM	2	SOCKET ASSEMBLY
0180	1960392SM	3	SCREW, Pan Head Phillips, #10-24 x 1
0190	1723123SM	1	ROD, Dash Support
0200	1933896SM	3	NUT, Hex, Nylon, Lock, #10-24
0210	1925003SM	1	SCREW, Taptite, 1/4-20 x 1/2
0220	1732030SM	1	GUIDE, Hood LH
0230	1732031SM	1	GUIDE, Hood RH
0350	1754094YP	2	POSITIONER, Hood
0360	1757664YP	1	Insulation

Lift Group - Manual

Note: Unless noted otherwise, use the standard torque specifications

Mfg. No: 2691218-00



Lift Group - Manual

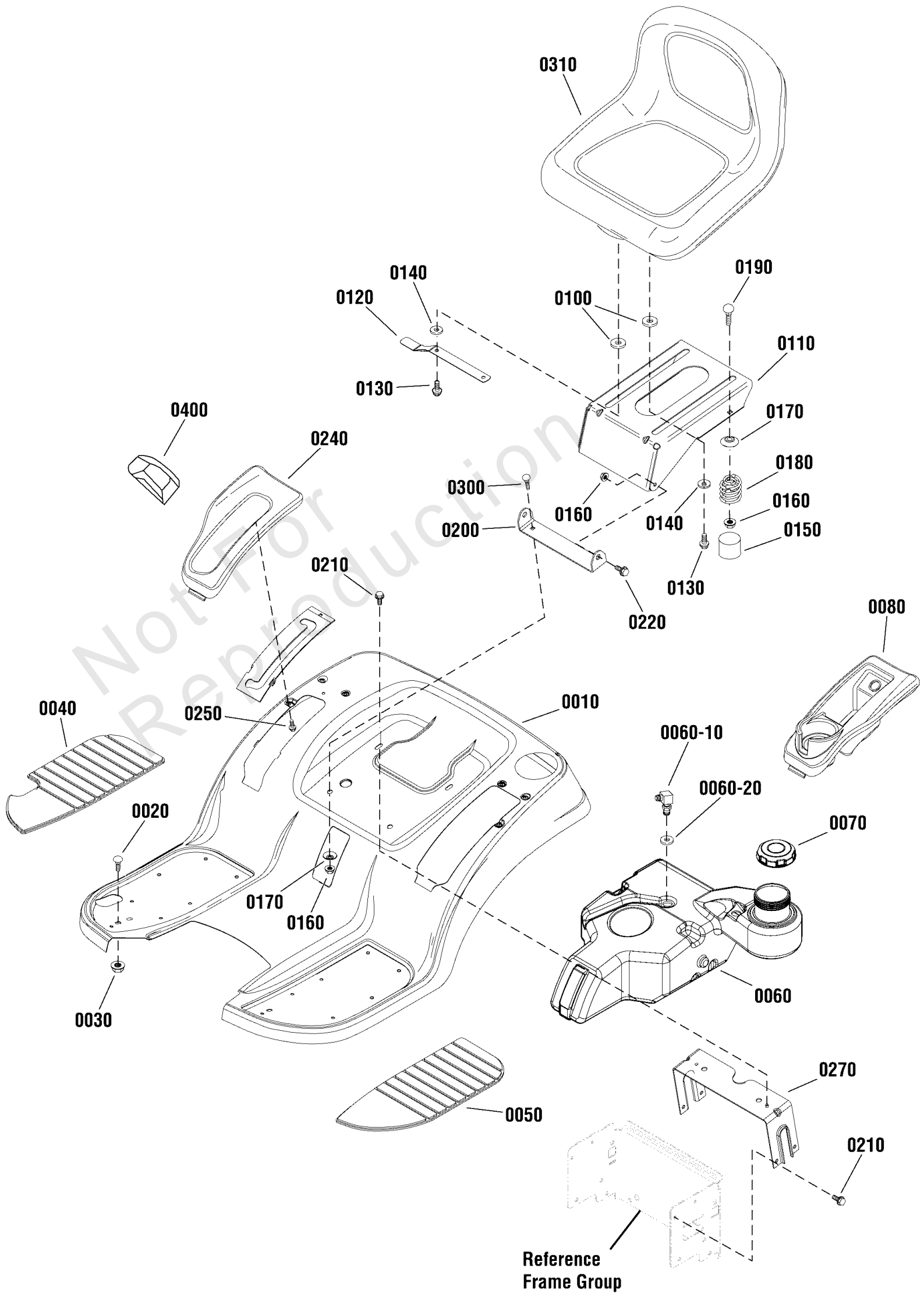
REF NO	PART NO	QTY	DESCRIPTION
0010	1728070SM	1	ROD, Lift Handle, 17.7
0040	1729652SM	1	SPRING, Torsion
0070	1931277SM	3	NUT, Hex Flange, 5/16-18
0100	1731417SM	2	ARM, Rear Lift
0110	1732426SM	2	BOLT, Shoulder
0120	1727955SM	2	ROD, Lower Lift, 10.00 LG
0150	1731894SM	2	TRUNNION
0160	1960687SM	2	NUT, Hex Flange, ESNA, 3/8-16
0170	1931211SM	2	NUT, Hex, Flange Lock, 3/8-16
0180	1960074SM	4	CLIP, Spring
0190	1727985SM	1	QUADRANT, Lift Height
0200	1730264SM	1	DECAL, Height Of Cut
0210	1960252SM	1	BOLT, Carriage, 1/4-20 x 5/8
0220	1930641SM	1	NUT, Hex Flange Whiz, 1/4-20
0230	1960170SM	2	WASHER, 1/2
0240	094067MA	2	PIN, Threaded Shoulder
0250	1666294SM	2	SPACER
0260	1921333SM	1	CAPSCREW, Hex Head, 5/16-18 x 1
0270	1960044SM	1	WASHER, Plain, 21/64 x 1-1/4
0280	1728990ASM	1	CLEVIS, Lift
0290	1727935SM	1	SPACER, Pivot, 5/16 ID, 1-3/4 OD
0300	1727954SM	1	ROD, Lift, 5.43 LG

Not For
Reproduction

Seat Deck & Fuel Tank Group

Note: Unless noted otherwise, use the standard torque specifications

Mfg. No: 2691218-00



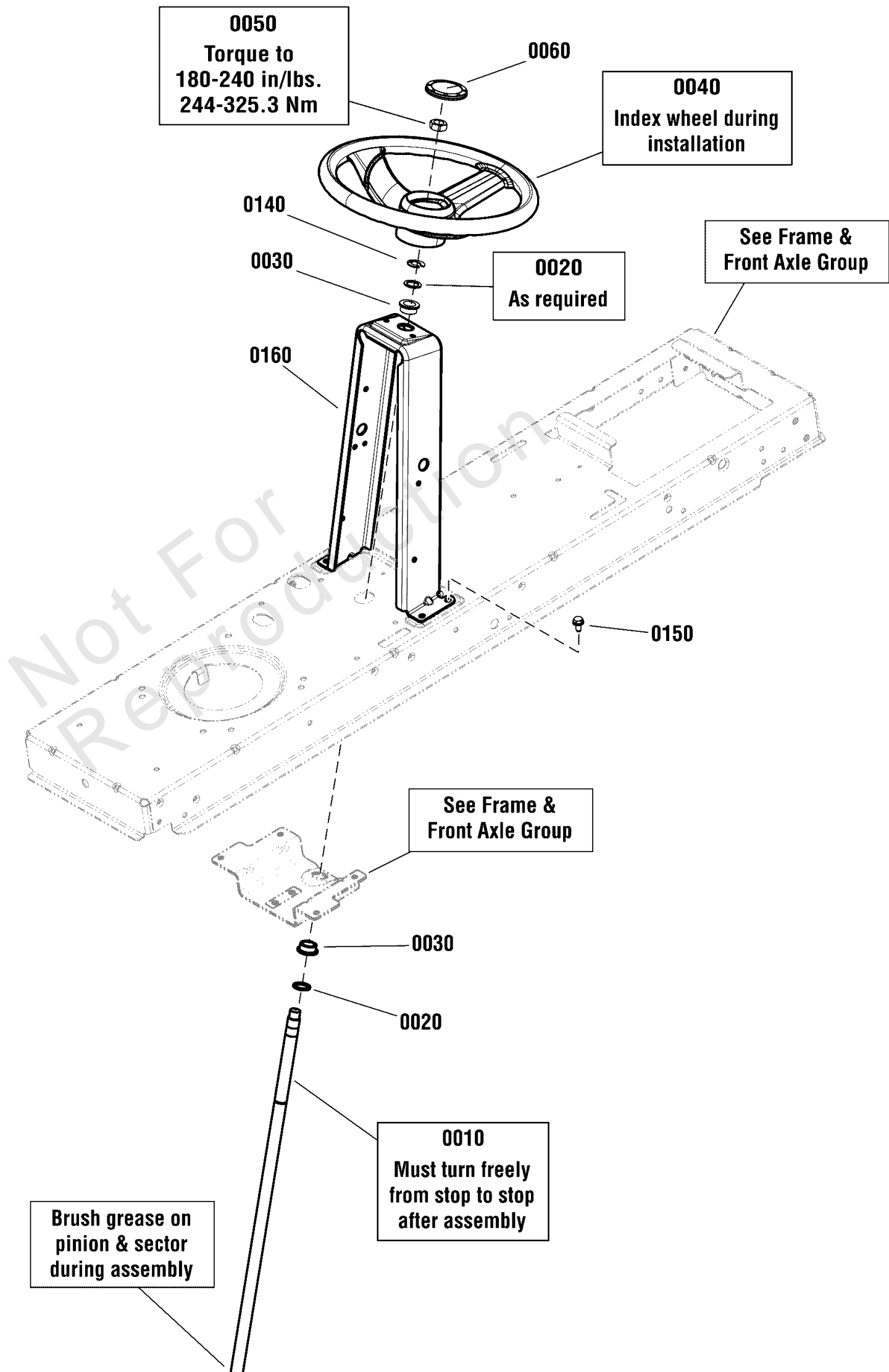
Seat Deck & Fuel Tank Group

REF NO	PART NO	QTY	DESCRIPTION
0010	1727264CSM	1	DECK, Seat
0020	703185	2	BOLT, Carriage, 5/16-18 X 3/4
0030	1931277SM	4	NUT, Hex Flange, Whiz Lock, 5/16-18
0040	1757595YP	1	PAD, Foodrest, RH
0050	1757594YP	1	PAD, Foodrest, LH
0060	1738932YP	1	TANK, Fuel
0060-10	1736609YP	1	FITTING & HOSE ASSEMBLY, Fuel Tank
0060-20	1654930SM	1	BUSHING, Fuel Tank
0070	5101651SM	1	CAP, Fuel Tank
0080	1739535YP	1	POD, LH
0100	1731300SM	4	SPACER, 5/16 ID x 1-1/4 OD x 5/16
0110	1755767BMYP	1	SUPPORT, Seat
0120	1727268SM	1	LATCH, Seat
0130	1930595SM	4	CAPSCREW, Hex Flange, Whiz Lock, 5/16-18 x 1
0140	703298	4	WASHER, 5/16
0150	1704724SM	2	COVER, Spring, 1-1/2"
0160	703115	4	NUT, Flange Nylock, 5/16-18
0170	1709256SM	4	WASHER, Spring, 5/16 x 1 1/4
0180	1704728SM	2	SPRING, Compression, 2"
0190	703225	2	BOLT, Carriage, 5/16-18 x 3/4
0200	1727266ASM	1	PIVOT, Seat
0210	703949	6	SCREW, Hex Washer Head, Taptite, 5/16-18 x 5/8
0220	1729576SM	2	BOLT, Shoulder, 5/16-18 x 15/32
0240	1739537YP	1	POD, RH
0250	1960536SM	6	SCREW, Hex Washer Head, Pastite, 1/4 x 1/2
0270	1731310ASM	1	SUPPORT, Seat Deck
0300	704065	2	BOLT, Carriage Short Neck, 5/16-18 X 7/8
0310	1754213YP	1	SEAT, Hi Back
0400	1722302SM	1	GRIP

Steering Group

Note: Unless noted otherwise, use the standard torque specifications

Mfg. No: 2691218-00



Steering Group

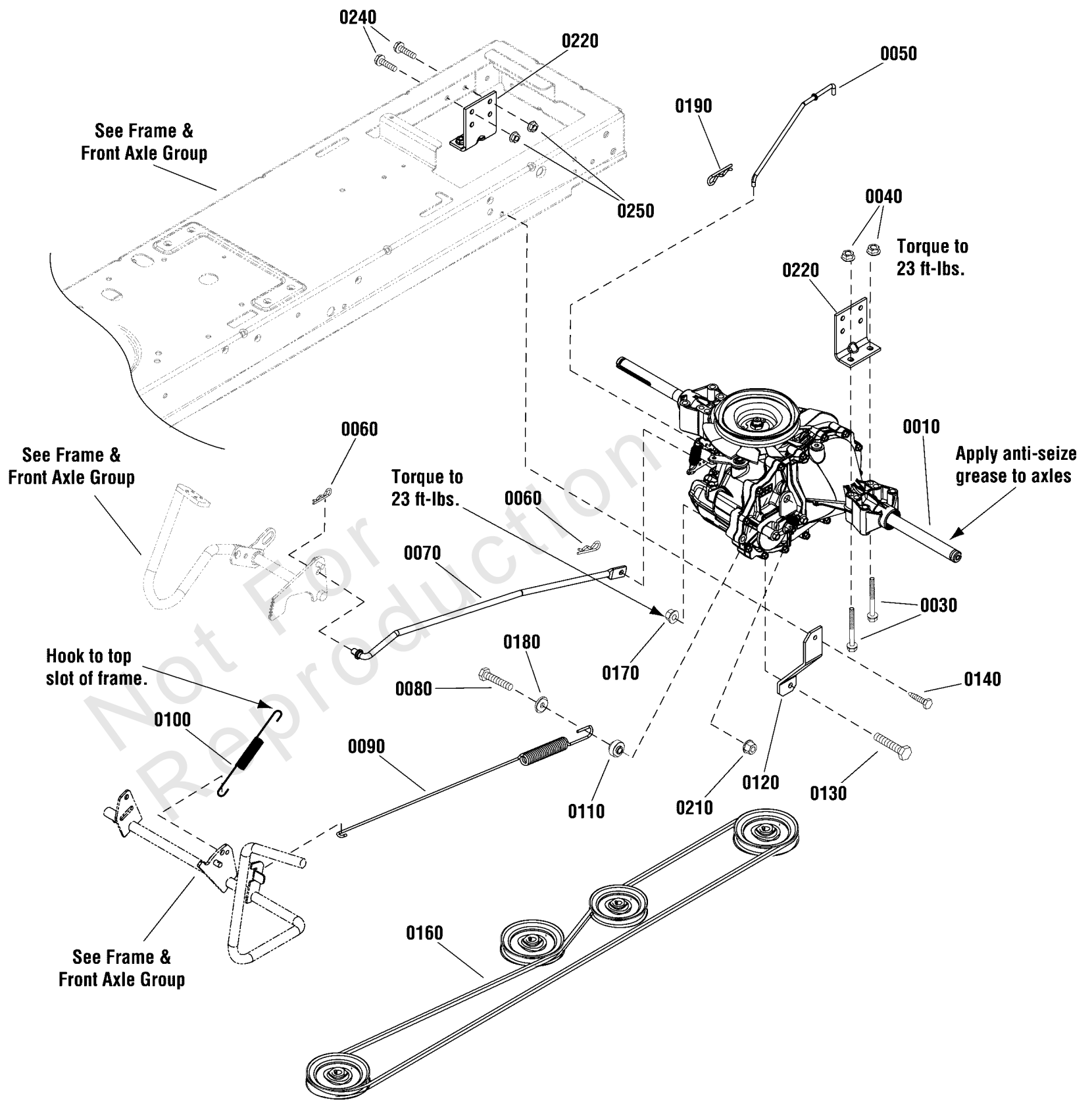
REF NO	PART NO	QTY	DESCRIPTION
0010	1727813SM	1	SHAFT, Steering Gear & Spline
0020	703151	2	WASHER, .766 ID X 1.06 OD X .07
0030	1729665SM	2	BUSHING, Steering
0040	1728069SM	1	STEERING WHEEL, Aluminum Insert
0050	1960576SM	1	NUT, Hex Lock, ESNA Light, 5/8-18
0060	1725024SM	1	CAP, Steering Wheel
0140	1611710SM	1	RING, Klipring Extension
0150	1930601SM	4	CAPSCREW, Hex Washer Head, Taptite, 5/6-18 x 5/8
0160	885835BMYP	1	TOWER

Not For
Reproduction

Transmission Group - Hydro Gear

Note: Unless noted otherwise, use the standard torque specifications

Mfg. No: 2691218-00



Transmission Group - Hydro Gear

REF NO	PART NO	QTY	DESCRIPTION
0010	1736637	1	* TRANSMISSION, Hydro Gear
0030	1960586	4	CAPSCREW, Hex Head Whiz Lock, 5/16-18 x 2-1/2
0040	1931277	4	NUT, Hex Flange, 5/16-18
0050	1736716	1	ROD, Free Wheel
0060	1722460	2	PIN, Quick
0070	1750545	1	ROD, Speed Control
0080	1921977	1	CAPSCREW, Hex Head, 5/16-18 x 1-1/4
0090	1736409	1	SPRING, Extension
0100	1721995	1	SPRING, Extension, 6-5/8 Lg
0110	1736854	1	SPACER
0120	1736410A	1	STRAP, Torque
0130	1921978	1	CAPSCREW, Hex Head, 5/16-18 x 2
0140	1664847SM	1	CAPSCREW, Hex Head, Taptite, 5/16-18 x 3/4
0160	1737441	1	V-BELT, Drive Belt, HA, 88.46
0170	1960686	2	NUT, Hex Flange, 5/16-18
0180	1919381	1	WASHER, Flat, 5/16 x 1 OD
0190	1960221	1	CLIP, Hair Pin, 5/8 Dia. x 1-5/16 Lg
0210	704067	1	NUT, 5/16-18, Hex Flange, Center Lock
0220	1727903ASM	2	SUPPORT, Transmission
0240	703354	4	SCREW, Flange, Whiz-Lock, 5/16-18 X 3/4
0250	703409	4	NUT, Serrated Lock Flange, 5/16-18

Not For
Reproduction

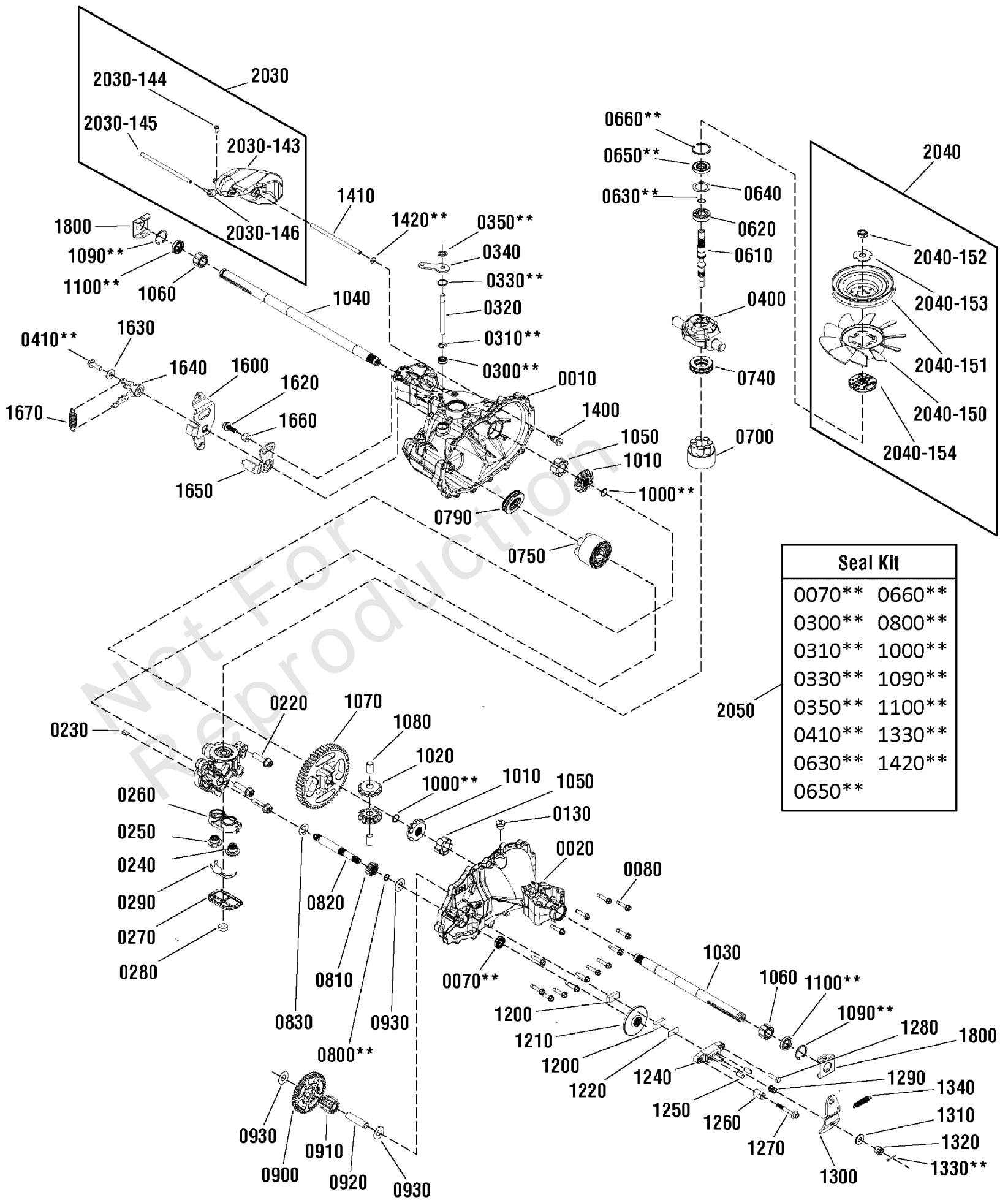
Footnotes:

Note:* See your local authorized dealership for parts and warranty.

Transmission SERVICE PARTS - Hydro-Gear

Note: Unless noted otherwise, use the standard torque specifications

Mfg. No: 2691218-00



Transmission SERVICE PARTS - Hydro-Gear

REF NO	PART NO	QTY	DESCRIPTION
0010	-----	1	* MAIN HOUSING
0020	-----	1	* SIDE HOUSING
0070	-----	1	** SEAL, Lip, 1/2 x 1 x 1/4
0080	-----	14	* SCREW, Hex Washer, 1/4-20 x 1-1/8
0130	-----	1	* PLUG, 9/16-18
0210	-----	1	* BEARING, Journal
0220	-----	3	* BOLT, Hex Flange, 3/8-16
0230	-----	1	* PLATE, Bypass
0240	-----	1	* CHECK PLUG & WASHER ASSEMBLY, .027
0250	-----	1	* CHECK PLUG & WASHER ASSEMBLY
0260	-----	1	* BASE, Filter
0270	-----	1	* COVER, Filter
0280	-----	1	* RING, Magnet
0290	-----	1	* DEFLECTOR
0300	-----	1	** SEAL, Lip, 3/8 x 3/4 x 1/4
0310	-----	1	** RING, Retainer, 3/8
0320	-----	1	* ROD, Actuator Bypass
0330	-----	1	** RING, Retainer, 3/4
0340	-----	1	* ARM, Bypass
0350	-----	1	** RING, Retainer, 3/8
0400	-----	1	* TRUNNION, Swash Plate
0410	-----	1	** SCREW, 5/16-18 x 1
0610	1752308	1	SHAFT, Input
0620	1715142	1	BALL BEARING, 15 x 35 x 11
0630	1715141	1	** RING, Retaining Wire, .512 ID
0640	1706172	1	* WASHER, Spacer, 1-15/64 x 9/16
0650	1706173	1	** SEAL, Lip, 15 x 35 x 7
0660	-----	1	** RING, Retainer, 1-9/16, INT
0700	-----	1	* KIT, Block, 7 Piston, 8cc
0740	-----	1	* BEARING, Thrust Ball, 27 x 47 x 14
0750	-----	1	* PISTON BLOCK ASSEMBLY
0790	1715144	1	BEARING, Thrust Ball, 30 x 52 x 13
0800	-----	1	** RING, Retainer, 1/2, EXT
0810	-----	1	* GEAR, 13T Pinion
0820	-----	1	* SHAFT, Motor
0830	-----	1	* WASHER, .60 x 1
0900	-----	1	* GEAR, 10T / 48T
0910	-----	1	* GEAR, Jackshaft, 10T
0920	-----	1	* JACKSHAFT, Pin
0930	1715169	3	WASHER, 7/16 x 1 x 1/2
1000	-----	2	** RING, Retainer, Spiral, 5/8, EXT
1010	-----	2	* GEAR, Bevel, 12T, Spline OD
1020	-----	2	* GEAR, Bevel, 12T, 1/2 OD
1030	-----	1	* SHAFT, Axle, Keyed, 12-9/64 x 3/4
1040	-----	1	* SHAFT, Axle, Keyed, 17-3/4 x 3/4
1050	-----	2	* BUSHING, Inboard
1060	-----	2	* BUSHING, Outboard
1070	-----	1	* GEAR, 54T, Bull

Footnotes:

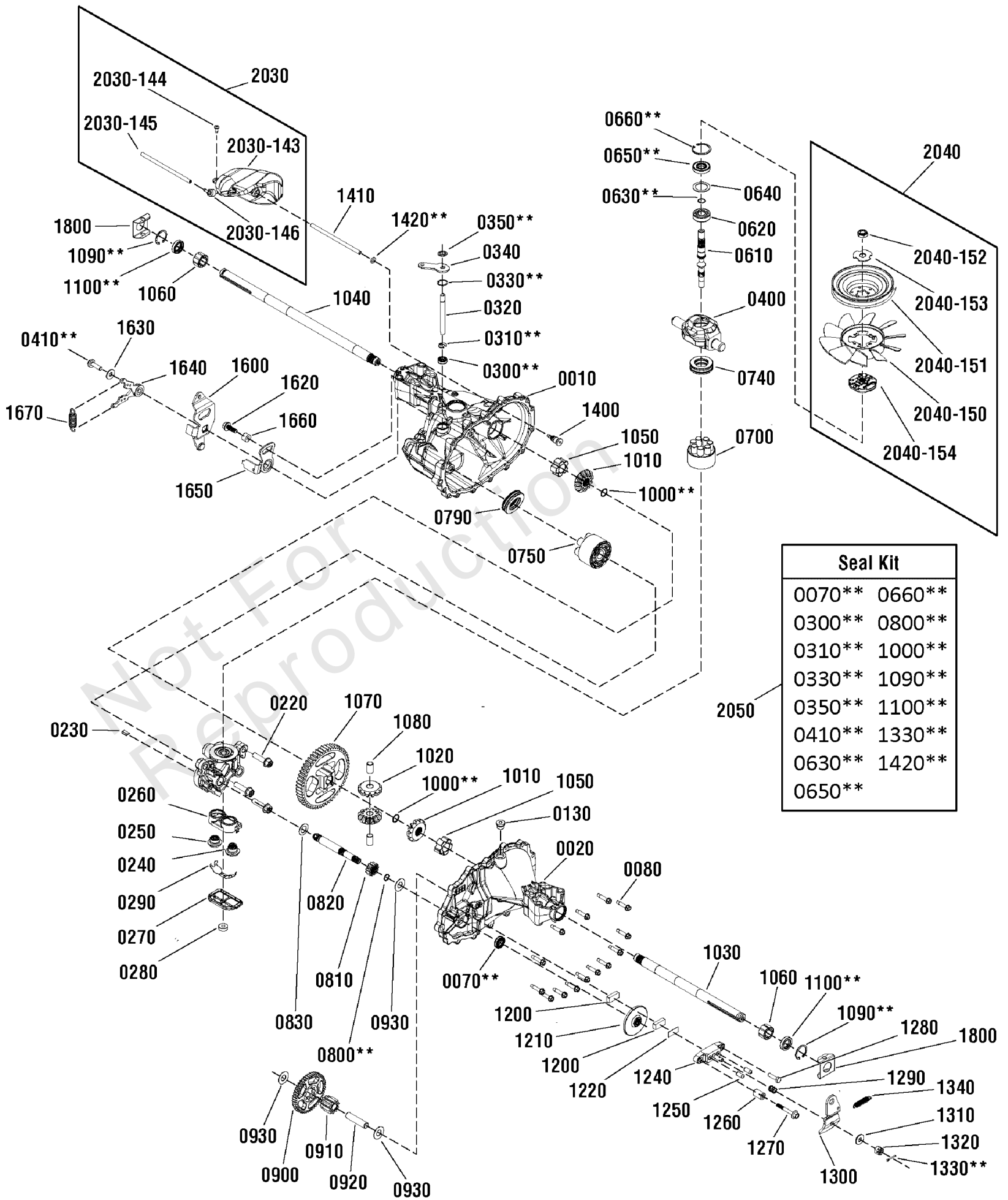
Note:** Not a serviceable part, order seal kit, ref # 2050

Note:* See your local authorized dealership for parts and warranty or contact Hydro Gear at www.hydro-gear.com/Support/NorthAmerica.aspx (U.S. 1-877-728-7410 Int'l 32 (0) 12 670 631)

Transmission SERVICE PARTS - Hydro-Gear

Note: Unless noted otherwise, use the standard torque specifications

Mfg. No: 2691218-00



Transmission SERVICE PARTS - Hydro-Gear

REF NO	PART NO	QTY	DESCRIPTION
1080	-----	2	* PIN, Differential
1090	-----	2	** RING, Retainer, INT, Axle
1100	-----	3	** SEAL, Lip, 3/4 x 1-1/8 x 1/4
1200	1706146	2	PUCK, Brake
1210	-----	1	* ROTOR, Brake
1220	1706145	1	PLATE, Brake Puck
1240	-----	1	* YOKE, Brake
1250	1706141	2	PIN, Brake, 5/16 x 3/4
1260	1715199	1	SPACER, Brake Torsion Spring, 1/4 x 9/16
1270	-----	1	* SCREW, Patch, 1/4-20 x 2
1280	1706147	1	SCREW, Patch, 1/4-20 x 1
1290	-----	1	* SPRING, Compression, Brake, Anti-Drag
1300	-----	1	* ARM, Brake
1310	-----	1	* WASHER, 11/32 x 7/8
1320	1714431	1	NUT, Castle, 5/16-24
1330	-----	1	** PIN, Cotter, 3/32 x 3/4
1340	-----	1	* SPRING, Brake Arm
1400	-----	1	* FITTING, Hydraulic, O-Ring Adapter, 5/16
1410	-----	1	* HOSE
1420	-----	1	** O-Ring, .103 x .299 ID
1600	-----	1	* ARM, Control
1620	-----	1	* BOLT, Hex Flange Head
1630	-----	1	* WASHER, 11/32 x 7/8 (Duplicate of #131)
1640	-----	1	* ROTATION ASSEMBLY
1650	-----	1	* NEUTRAL ARM ASSEMBLY
1660	-----	1	* BUSHING
1670	-----	1	* SPRING, Extension
1800	1752309	2	CLIP, Spring, Housing Thrust
2030	1752310	1	E-TANK KIT -(Includes ref # 2030-143, 2030-144, 2030-145 & 2030-146)
2030-143	-----	1	TANK EXPANSION -(Not a serviceable part, order kit #2030)
2030-144	-----	1	BOLT, 10-32 x 1/2 -(Not a serviceable part, order kit #2030)
2030-145	-----	1	TUBE -(Not a serviceable part, order kit #2030)
2030-146	-----	1	CAP, Barbed Vent -(Not a serviceable part, order kit #2030)
2040	1752311	1	FAN & PULLEY KIT -(Includes ref # 2040-150, 2040-151, 2040-152, 2040-153 & 2040-154)
2040-150	-----	1	* FAN, 7", 10 Blade -(Not a serviceable part, order kit #2040)
2040-151	-----	1	* PULLEY, 4.4" -(Not a serviceable part, order kit #2040)
2040-152	-----	1	* NUT, Nylock, 1/2-20 -(Not a serviceable part, order kit #2040)
2040-153	-----	1	* WASHER, OD Slotted -(Not a serviceable part, order kit #2040)
2040-154	-----	1	* HUB, Pulley, 1-9/16 -(Not a serviceable part, order kit #2040)
2050	1752312	1	SEAL KIT -(Includes items marked with **)

Footnotes:

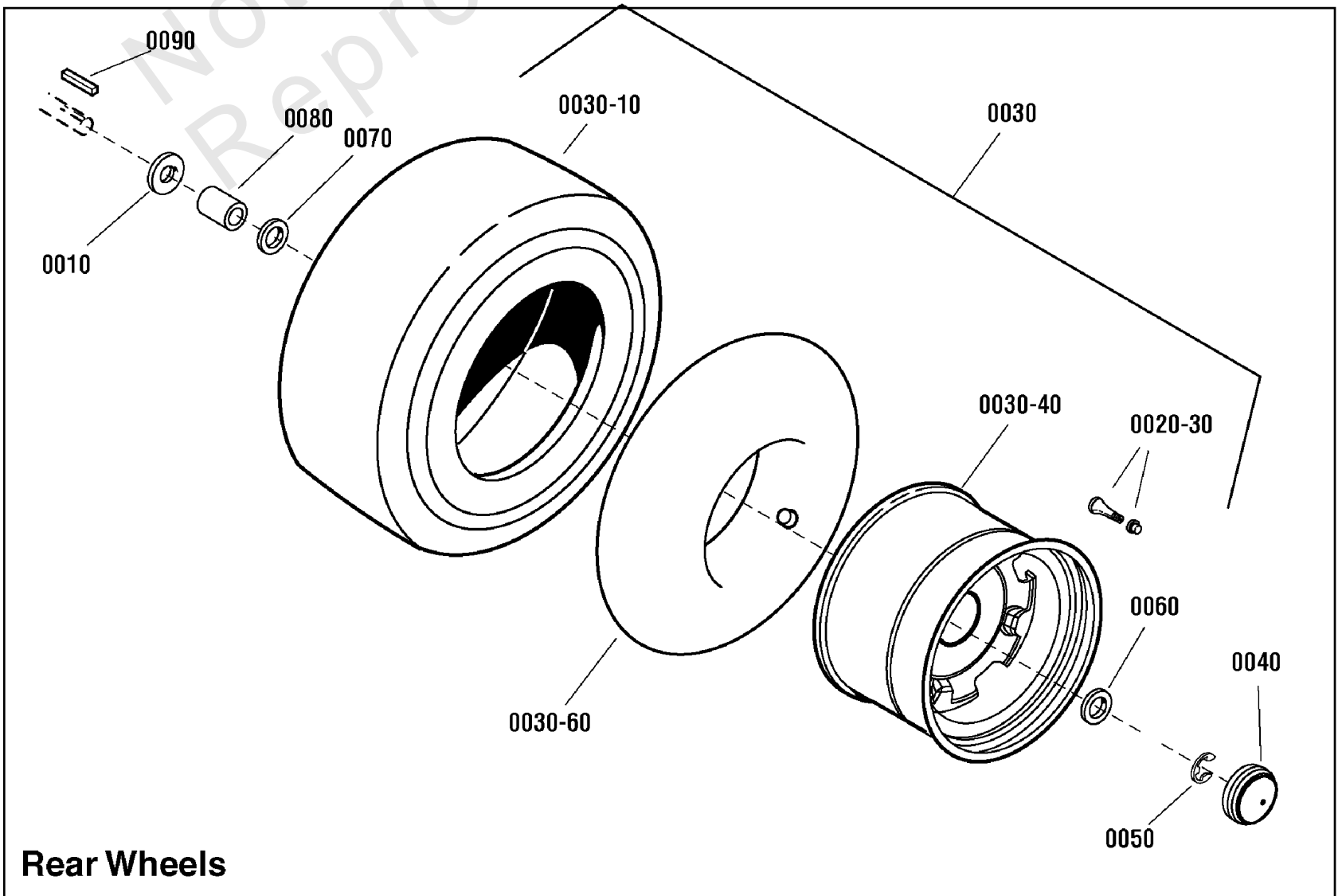
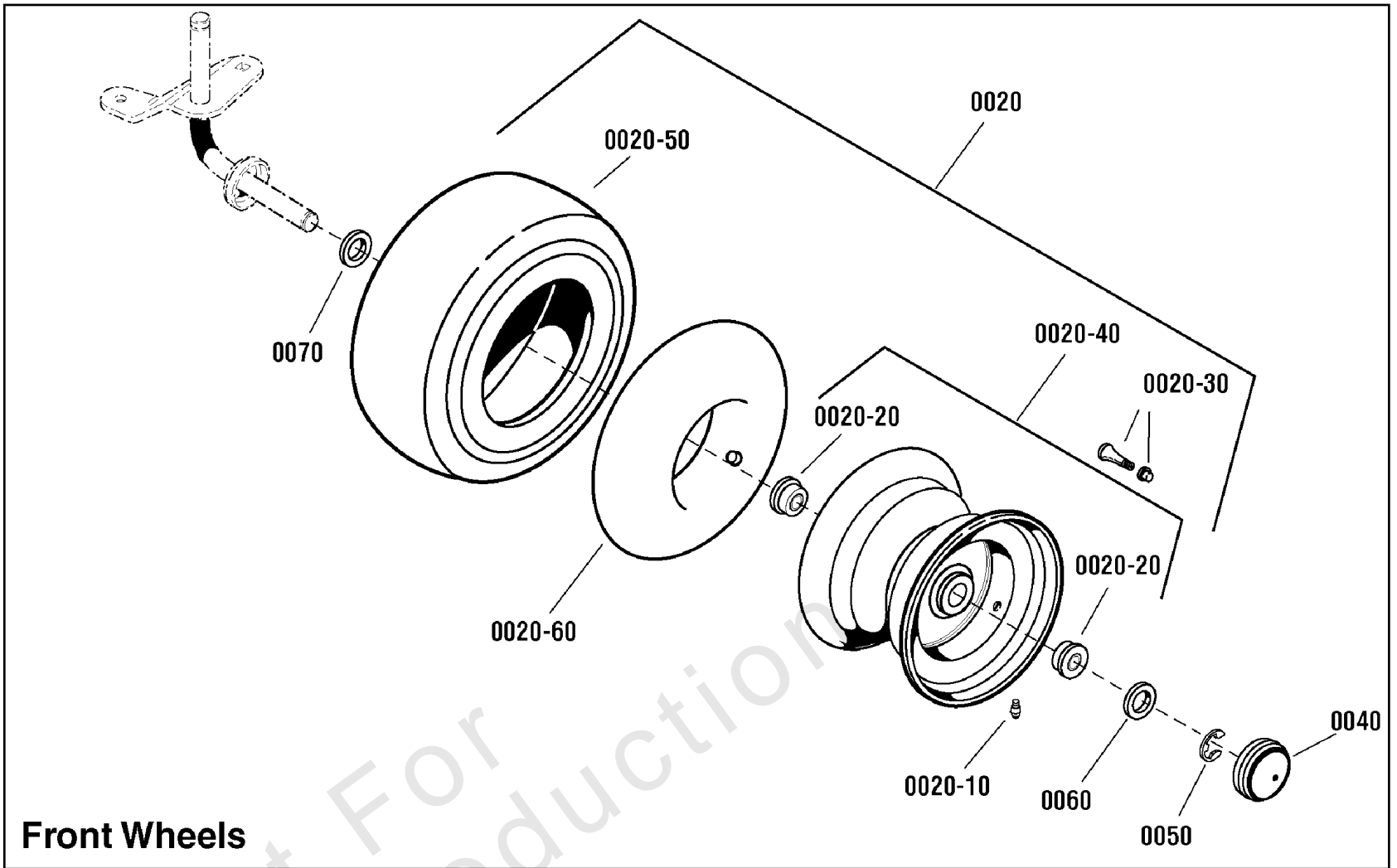
Note:** Not a serviceable part, order seal kit, ref # 2050

Note:* See your local authorized dealership for parts and warranty or contact Hydro Gear at www.hydro-gear.com/Support/NorthAmerica.aspx (U.S. 1-877-728-7410 Int'l 32 (0) 12 670 631)

Wheels & Tires Group

Note: Unless noted otherwise, use the standard torque specifications

Mfg. No: 2691218-00



Wheels & Tires Group

REF NO	PART NO	QTY	DESCRIPTION
0010	2860202SM	2	WASHER, 3/4 x 1-5/8 OD x 1/8 Thick
0020	1729708SM	2	WHEEL & TIRE ASSEMBLY, Front
0020-10	2812808SM	1	FITTING, Lube, 1/4
0020-20	1742259YP	2	BEARING 3/4" ID Hard
0020-30	2172353YP	4	VALVE STEM & CAP, Air .453 Dia 0.88 Long
0020-40	1726301SM	1	WHEEL & BUSHINGS ASSEMBLY, Front
0020-50	1731951SM	1	TIRE, 15 x 6 - 6, Turf Rider
0020-60	1664090SM	2	TUBE
0030	7101560YP	2	WHEEL & TIRE ASSEMBLY, 20 x 8.0-8 -(42" Models Only)
0030-10	7101559YP	2	TIRE, 20 x 8-8, K358 -(42" Models Only)
0030-40	-----	2	* RIM -(All Models)
0030-60	2164247SM	2	TUBE -(42" & 46" Models Only)
0040	094618MA	4	HUB CAP
0050	0011X3MA	4	E-RING, 3/4D, 1/2T
0060	17X195MA	4	WASHER, Flat
0070	17X160MA	4	WASHER, Flat, 3/4 x 1-1/4 x 16
0080	1730181SM	2	SPACER, 3/4 ID x 1-1/4 OD x 1.65
0090	021553MA	2	KEY, Square, 3/16

Not For
Reproduction

Footnotes:

Note:* Not a serviceable part, service wheel complete

Hardware Identification & Torque Specifications

Torque Specification Chart								
FOR STANDARD METRIC MACHINE HARDWARE (Tolerance ± 20%)								
Property Class	5.6		8.8		10.9		12.9	
	Class 5.6		Class 8.8		Class 10.9		Class 12.9	
Size Of Hardware	in/lbs	Nm.	in/lbs	Nm.	in/lbs	Nm.	in/lbs	Nm.
	ft/lbs		ft/lbs		ft/lbs		ft/lbs	
M3	5.88	.56	13.44	1.28	19.2	1.80	22.92	2.15
M4	13.44	1.28	30.72	2.90	43.44	4.10	52.56	4.95
M5	26.4	2.50	60.96	5.75	5.97	8.10	7.15	9.7
M6	44.64	4.3	7.3	9.9	10.3	14	12.1	16.5
M7	5.2	7.1	12.1	16.5	16.9	23	19.9	27
M8	7.7	10.5	17.7	24	25	34	29	40
M10	15	21	35	48	50	67	59	81
M12	26	36	61	83	86.2	117	103	140
M14	42	58	101	132	136	185	162	220
M16	64	88	147	200	210	285	250	340
M18	89	121	202	275	287	390	346	470
M20	126	171	290	390	405	550	486	660
M22	169	230	390	530	559	745	656	890
M24	217	295	497	375	708	960	840	1140
M27	320	435	733	995	1032	1400	1239	1680
M30	435	590	995	1350	1401	1900	1681	2280
M33	590	800	1349	1830	1902	2580	2278	3090
M36	759	1030	1740	2360	2441	3310	2935	3980
M39	988	1340	2249	3050	3163	4290	3798	5150

Torque Specification Chart						
FOR STANDARD MACHINE HARDWARE (Tolerance ± 20%)						
Hardware Grade	No Marks		SAE Grade 5		SAE Grade 8	
	SAE Grade 2		SAE Grade 5		SAE Grade 8	
Size Of Hardware	in/lbs	Nm.	in/lbs	Nm.	in/lbs	Nm.
	ft/lbs		ft/lbs		ft/lbs	
8-32	19	2.1	30	3.4	41	4.6
8-36	20	2.3	31	3.5	43	4.9
10-24	27	3.1	43	4.9	60	6.8
10-32	31	3.5	49	5.5	68	7.7
1/4-20	66	7.6	8	10.9	12	16.3
1/4-28	76	8.6	10	13.6	14	19.0
5/16-18	11	15.0	17	23.1	25	34.0
5/16-24	12	16.3	19	25.8	29	34.0
3/8-16	20	27.2	30	40.8	45	61.2
3/8-24	23	31.3	35	47.6	50	68.0
7/16-14	30	40.8	50	68.0	70	95.2
7/16-20	35	47.6	55	74.8	80	108.8
1/2-13	50	68.0	75	102.0	110	149.6
1/2-20	55	74.8	90	122.4	120	163.2
9/16-12	65	88.4	110	149.6	150	204.0
9/16-18	75	102.0	120	163.2	170	231.2
5/8-11	90	122.4	150	204.0	220	299.2
5/8-18	100	136	180	244.8	240	326.4
3/4-10	160	217.6	260	353.6	386	525.0
3/4-16	180	244.8	300	408.0	420	571.2
7/8-9	140	190.4	400	544.0	600	816.0
7/8-14	155	210.8	440	598.4	660	897.6
1-8	220	299.2	580	788.8	900	1,244.0
1-12	240	326.4	640	870.4	1,000	1,360.0

The guides and ruler furnished below are designed to help you select the appropriate hardware.

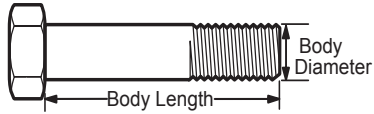


Nut, M8

Thread Diameter (mm)

Inside Diameter (in) Threads per inch

Nut, 1/2-16



Screw, M8- 1.25 x 25

Thread Diameter (mm) Distance between threads (mm) Body Length (mm)

Body Diameter Threads per inch Body Length (in)

Screw, 1/2- 16 x 2



Standard Hardware Sizing

When a washer or nut is identified as 1/2" (M8), this is the *Nominal size*, meaning the *inside diameter* is 1/2 inch (8mm metric thread diameter); if a second number is present it represents the *threads per inch* (distance between threads).

When bolt or capscrew is identified as 1/2 - 16 x 2" (M8 - 1.25 x 50), this means the *Nominal size*, or body diameter is 1/2 inch (8mm metric thread diameter), the second number, 16, represents the *threads per inch*, (*distance between threads*). The final number is the body length of the bolt or screw, 2 inches (50mm).

NOTES

- These torque values are to be used for all hardware excluding: locknuts, self-tapping screws, thread forming screws, sheet metal screws and socket head setscrews.
- Recommended seating torque values for locknuts:
 - for prevailing torque locknuts - use 65% of grade 5 torques.
 - for flange whizlock nuts and screws - use 135% of grade 5 torques.
- Unless otherwise noted on assembly drawings, all torque values must meet this specification.

Common Hardware Types

Hex Head Capscrew



Washer



Carriage Bolt



Hex Nut

Wrench & Fastener Size Guide

1/4" Bolt or Nut Wrench—7/16"	5/16" Bolt or Nut Wrench—1/2"	3/8" Bolt or Nut Wrench—9/16"	7/16" Bolt or Nut Wrench (Bolt)—5/8" Wrench (Nut)—11/16"	1/2" Bolt or Nut Wrench—3/4"
M6 Bolt or Nut Wrench—10mm	M8 Bolt or Nut Wrench—13mm	M10 Bolt or Nut Wrench—17mm	M12 Bolt or Nut Wrench—19mm	M14 Bolt or Nut Wrench—22mm

