



Parts Manual

Mfg. No: 2691509-00
SRD360, 8270 Rear Discharge Lawn

1695092 - Tire Chains (22 x 10 - 8/10, 22 x 9.5 - 12).....

1696092 - Dozer Blade, 42".....

885959 - Grass Mulcher Kit, 107cm Rear Discharge Lawn Tractor.....

885638 - Adapter Kit, Dozer Blade.....

1688033 - Rear Deflector, Rear Discharge Lawn Tractor.....

Not For
Reproduction

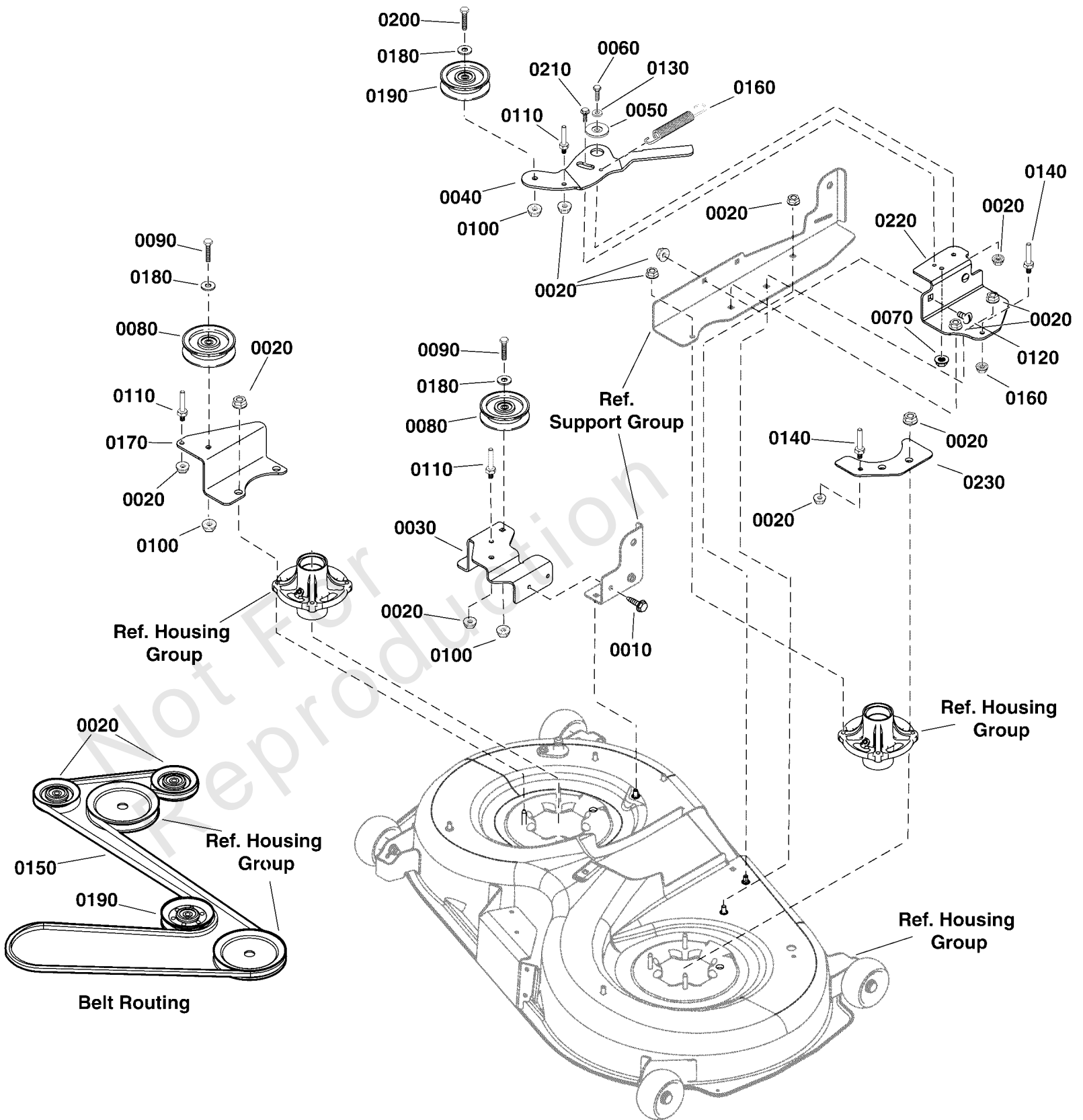
| Model Components | Page |
|---|-------------|
| 42" (107cm) Mower Deck - Clutch Group. | 4 |
| 42" (107cm) Mower Deck - Housing, Arbors & Blades Group. | 6 |
| 42" (107cm) Mower Deck - Support Group. | 8 |
| Backplate Group. | 10 |
| Collector Group. | 12 |
| Controls Group. | 14 |
| Decals Group. | 16 |
| Electrical Group. | 18 |
| Engine Group. | 20 |
| EU Guard Group. | 22 |
| Frame Group. | 24 |
| Front Axle Group. | 26 |
| Hood, Grille & Dash Group. | 28 |
| Lift Group. | 30 |
| Seat Deck & Fuel Tank Group. | 32 |
| Seat Group. | 34 |
| Steering Group. | 36 |
| Suspension Group. | 38 |
| Transmission Group - Tuff Torq K46EC. | 40 |
| Wheels & Tires. | 42 |
| Torque Specification Chart. | 44 |

Not For
Reproduction

42" (107cm) Mower Deck - Clutch Group

Note: Unless noted otherwise, use the standard torque specifications

Mfg. No: 2691509-00



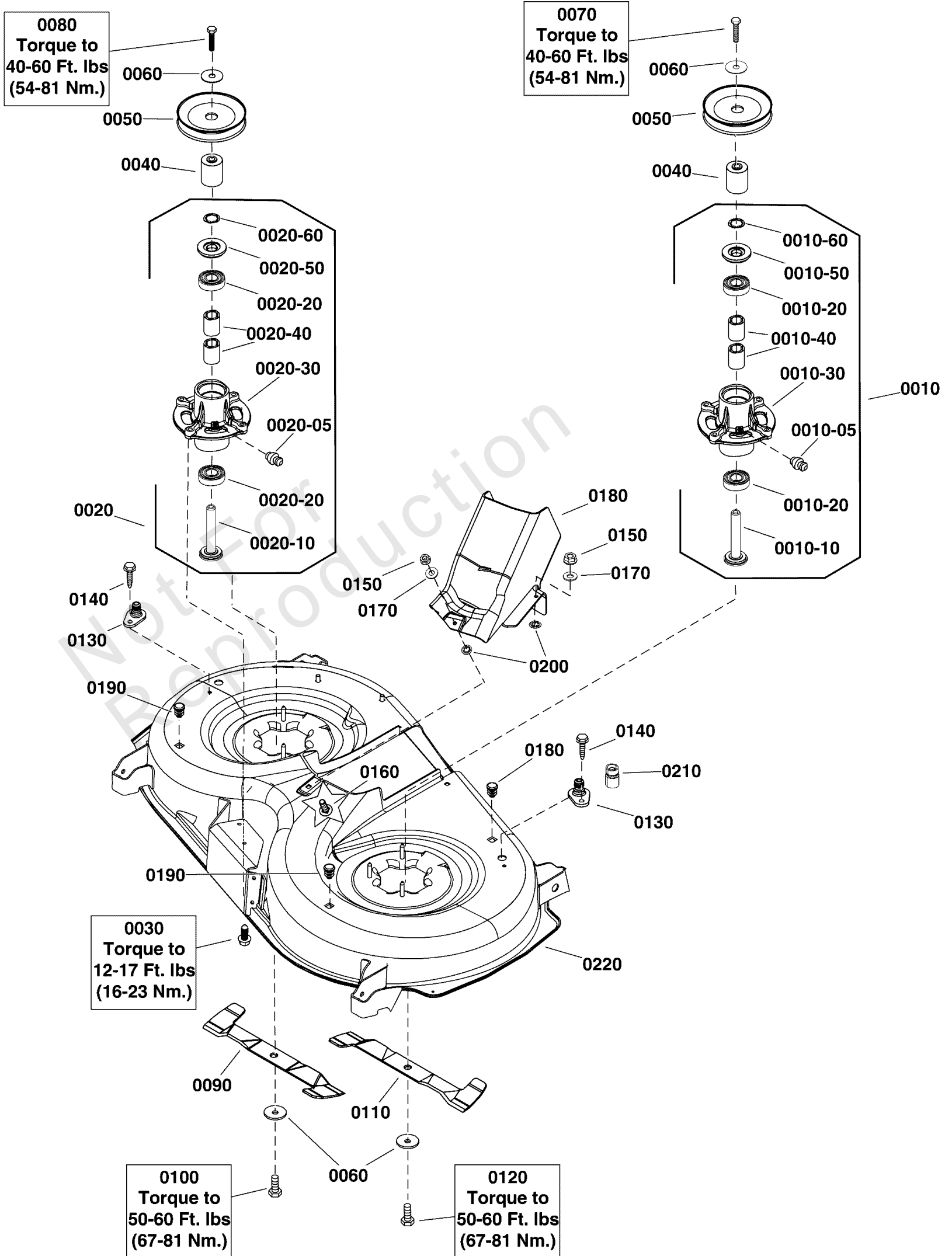
42" (107cm) Mower Deck - Clutch Group

| REF NO | PART NO | QTY | DESCRIPTION |
|--------|-------------|-----|---|
| 0010 | 703228 | 2 | SCREW, Washer Head Taptite, 5/16-18 X 3/4 |
| 0020 | 703409 | 14 | NUT, Serrated Lock Flange, 5/16-18 |
| 0030 | 84003049 | 1 | BRACKET, Idler |
| 0040 | 1758759BMYP | 1 | IDLER ARM |
| 0050 | 1727935SM | 1 | SPACER, Pivot |
| 0060 | 703585 | 1 | CAPSCREW, Hex Head, 5/16-18 x 1 |
| 0070 | 704067 | 1 | NUT, 5/16-18, Hex Flange, Center Lock |
| 0080 | 885482YP | 2 | IDLER, Pulley |
| 0090 | 703589 | 2 | CAPSCREW, Hex Head, 3/8-16 X 2, GR5 |
| 0100 | 703330 | 3 | NUT, Hex Flange Whiz-Lock, 5/16-18 |
| 0110 | 885534YP | 3 | BELT GUIDE |
| 0120 | 703185 | 3 | BOLT, Carriage, 5/16-18 X 3/4 |
| 0130 | 1919326SM | 1 | WASHER, 5/16 |
| 0140 | 1401105MA | 2 | BELT GUIDE, Long |
| 0150 | 1758760YP | 1 | BELT |
| 0160 | 165X157MA | 1 | SPRING, Extension |
| 0170 | 885845BMYP | 1 | BRACKET, Idler, Fixed |
| 0180 | 704128 | 3 | WASHER, Flat |
| 0190 | 885937YP | 1 | PULLEY, Idler 4.00 |
| 0200 | 703406 | 1 | CAPSCREW, Hex Head, 3/8-16 X 1 1/2, GR5 |
| 0210 | 1752802YP | 1 | BOLT, Shoulder, 5/16-18 x 1.03LG |
| 0220 | 1758758BMYP | 1 | BRACKET, Idler Mount |
| 0230 | 1758757BMYP | 1 | PLATE, Belt Guide Mount |

42" (107cm) Mower Deck - Housing, Arbors & Blades Group

Note: Unless noted otherwise, use the standard torque specifications

Mfg. No: 2691509-00



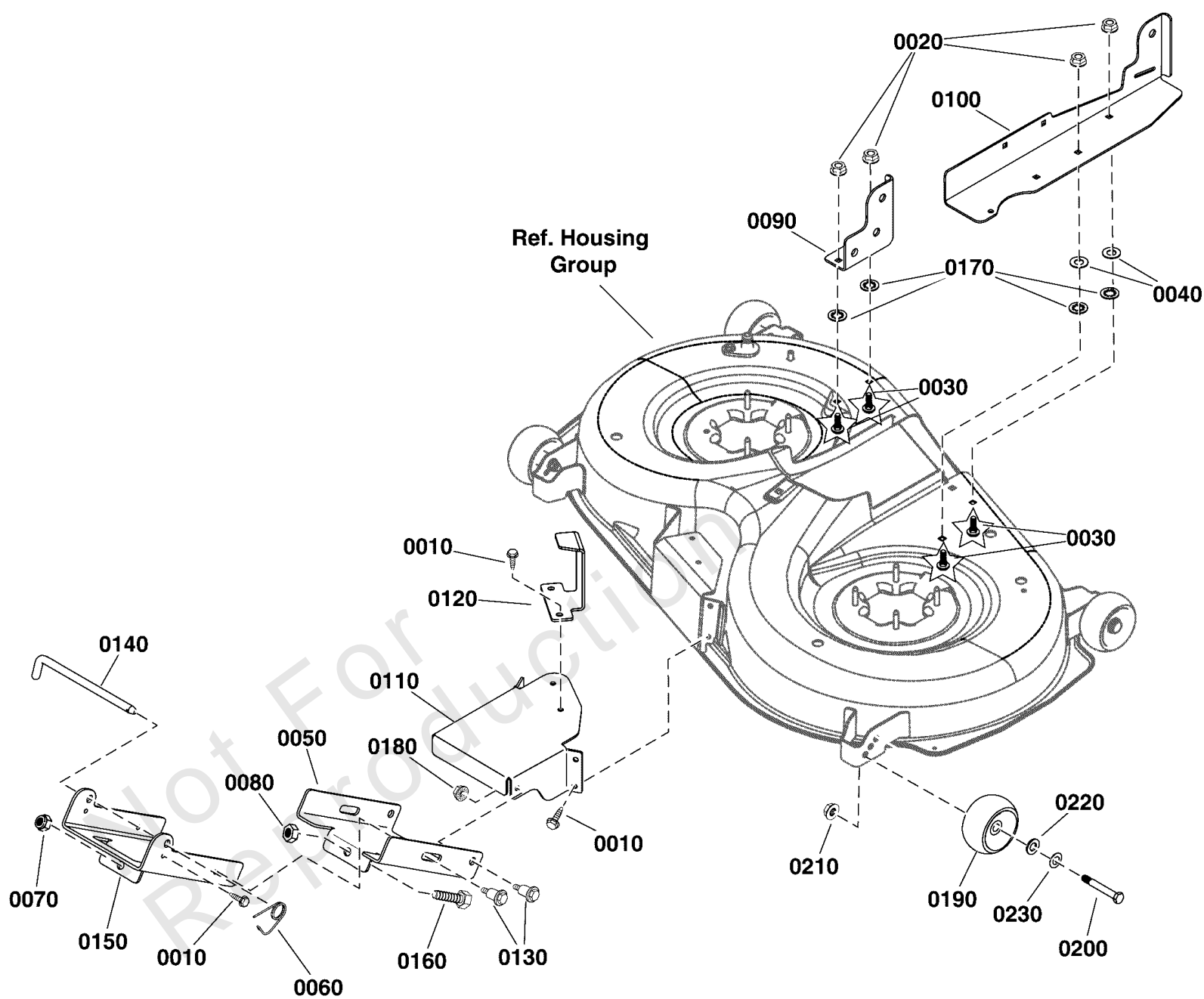
42" (107cm) Mower Deck - Housing, Arbors & Blades Group

| REF NO | PART NO | QTY | DESCRIPTION |
|---------|-------------|-----|---|
| 0010 | 1761015YP | 1 | ARBOR ASSEMBLY |
| 0010-05 | 1704314SM | 1 | FITTING, Lube, 1/4 |
| 0010-10 | 1760276YP | 1 | SHAFT, Spindle |
| 0010-20 | 1735399YP | 2 | BEARING, Ball, 20mm |
| 0010-30 | 1735573YP | 1 | HOUSING, w/Lube Fitting |
| 0010-40 | 1735328YP | 2 | SPACER, Bearing |
| 0010-50 | 1735323YP | 2 | SHIELD, Arbor |
| 0010-60 | 1960766YP | 1 | RING, Self Locking |
| 0020 | 84003176 | 1 | ARBOR ASSEMBLY, RH |
| 0020-05 | 1704314SM | 1 | FITTING, Lube, 1/4 |
| 0020-10 | 84003044 | 1 | SHAFT, Spindle |
| 0020-20 | 1735399YP | 2 | BEARING, Ball, 20mm |
| 0020-30 | 1735573YP | 1 | HOUSING, w/Lube Fitting |
| 0020-40 | 1735328YP | 2 | SPACER, Bearing |
| 0020-50 | 1735323YP | 2 | SHIELD, Arbor |
| 0020-60 | 1960766YP | 1 | RING, Self Locking |
| 0030 | 704318 | 8 | SCREW, Hex Washer Self-Tap, 5/16-18 x 1-1/2 |
| 0040 | 1750338YP | 2 | SPACER, Mower Drive |
| 0050 | 1758750YP | 2 | PULLEY |
| 0060 | 1656916SM | 4 | WASHER, Spring |
| 0070 | 1926110SM | 1 | CAPSCREW, Hex Head, 7/16-14 x 2-3/4, GR5 |
| 0080 | 703846 | 1 | CAPSCREW, Socket Head, 7/16-14 x 2-3/4, LH |
| 0090 | 1758513BMYP | 1 | BLADE, RH |
| 0100 | 703845 | 1 | CAPSCREW, Socket Head, 7/16-14 x 1, LH |
| 0110 | 1758514BMYP | 1 | BLADE, LH |
| 0120 | 1920676SM | 1 | CAPSCREW, Hex Head, 7/16-14 X 1 |
| 0130 | 1756247YP | 2 | ADAPTER, Washout Port |
| 0140 | 703228 | 2 | SCREW, Washer Head Taptite, 5/16-18 X 3/4 |
| 0150 | 703409 | 3 | NUT, Serrated Lock Flange, 5/16-18 |
| 0160 | 703800 | 3 | BOLT, Carriage, 5/16-18 X 1 |
| 0170 | 1919326SM | 3 | WASHER, 5/16 |
| 0180 | 885719YP | 1 | CENTER CAP |
| 0190 | 7046780SM | 3 | PLUG, Hole, .44" OD |
| 0200 | 703297 | 3 | RETAINER, 5/16 X 5/8 |
| 0210 | 1756246YP | 1 | CONNECTOR, Washout Port |
| 0220 | 885827BMYP | 1 | KIT, Mower Deck 107cm, Crow Black |

42" (107cm) Mower Deck - Support Group

Note: Unless noted otherwise, use the standard torque specifications

Mfg. No: 2691509-00



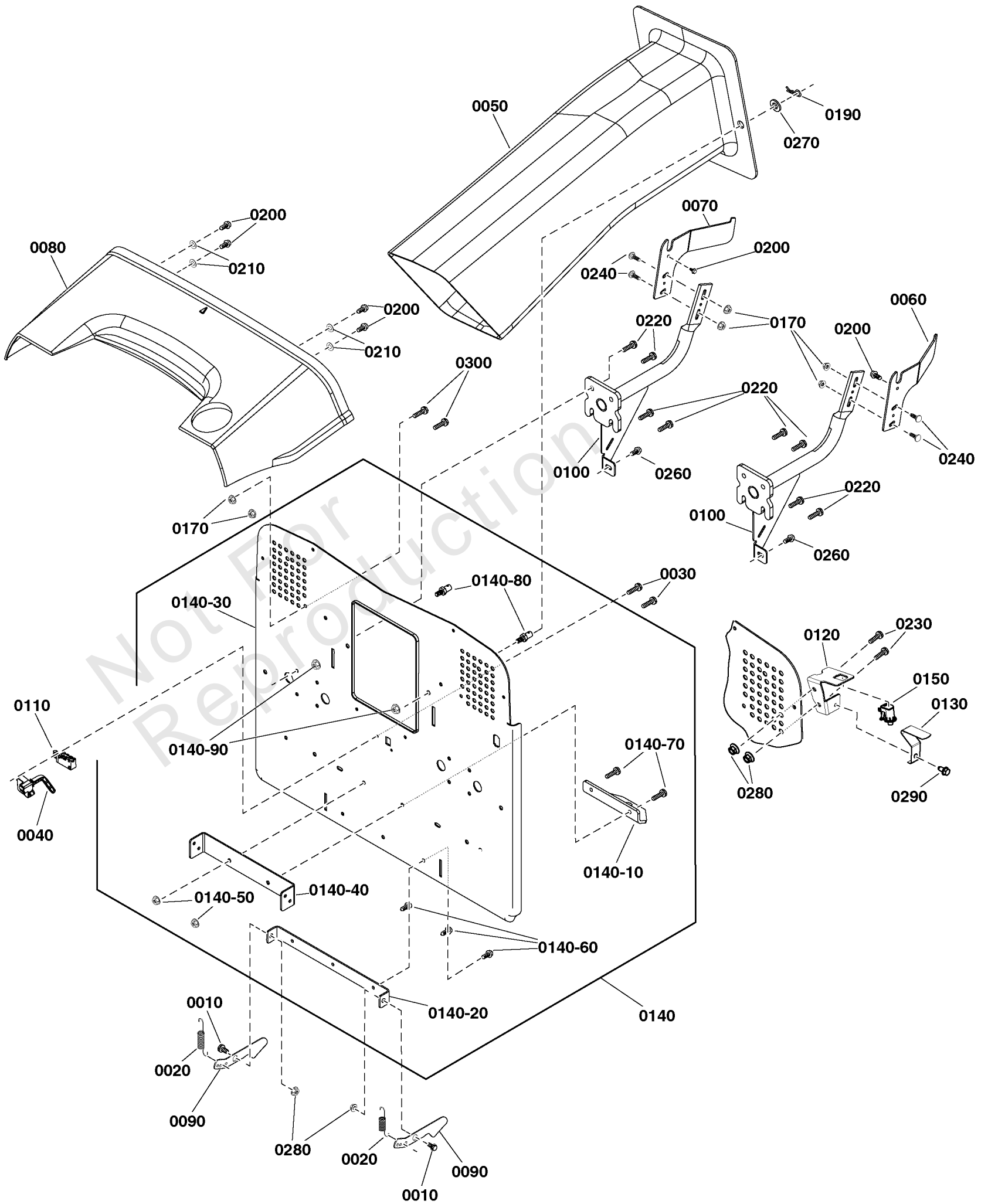
42" (107cm) Mower Deck - Support Group

| REF NO | PART NO | QTY | DESCRIPTION |
|--------|------------|-----|---|
| 0010 | 703228 | 8 | SCREW, Washer Head Taptite, 5/16-18 X 3/4 |
| 0020 | 703409 | 4 | NUT, Serrated Lock Flange, 5/16-18 |
| 0030 | 703800 | 4 | BOLT, Carriage, 5/16-18 X 1 |
| 0040 | 1919326SM | 2 | WASHER, 5/16 |
| 0050 | 885734BMYP | 1 | BRACKET, Front Connector |
| 0060 | 703852 | 1 | PIN, Retainer, 5/16 x 3/8 |
| 0070 | 1960379SM | 1 | NUT, Hex Lock, 1/2-13 |
| 0080 | 1913744SM | 1 | NUT, Hex Jam, 1/2-13 |
| 0090 | 885720BMYP | 1 | BRACKET, Deck, Rear, RH |
| 0090 | 84003054 | | BRACKET, Deck, Rear |
| 0100 | 84003053 | | BRACKET, Deck, Rear Lift |
| 0110 | 885727BMYP | 1 | SUPPORT, Front |
| 0120 | 84003051 | 1 | UPSTOP |
| 0130 | 1732426SM | 4 | BOLT, Shoulder, 5/16-18 |
| 0140 | 1731414SM | 1 | ROD, Latch, 9" |
| 0150 | 885699BMYP | 1 | BRACKET, Front Hanger |
| 0160 | 885710YP | 1 | BOLT, 1/2 x 3 |
| 0170 | 703297 | 4 | RETAINER, 5/16 X 5/8 |
| 0180 | 703115 | 4 | NUT, Flange Nylock, 5/16-18 |
| 0190 | 1714760SM | 2 | GAUGE WHEEL |
| 0200 | 2108765SM | 2 | BOLT, Wheel, 3/8-16 X 2.781 |
| 0210 | 703158 | 2 | NUT, Hex Flange, 3/8-16 |
| 0220 | 703853 | 2 | WASHER, 1/2 |
| 0230 | 720035 | 2 | WASHER, Spring, .30" ID |

Backplate Group

Note: Unless noted otherwise, use the standard torque specifications

Mfg. No: 2691509-00



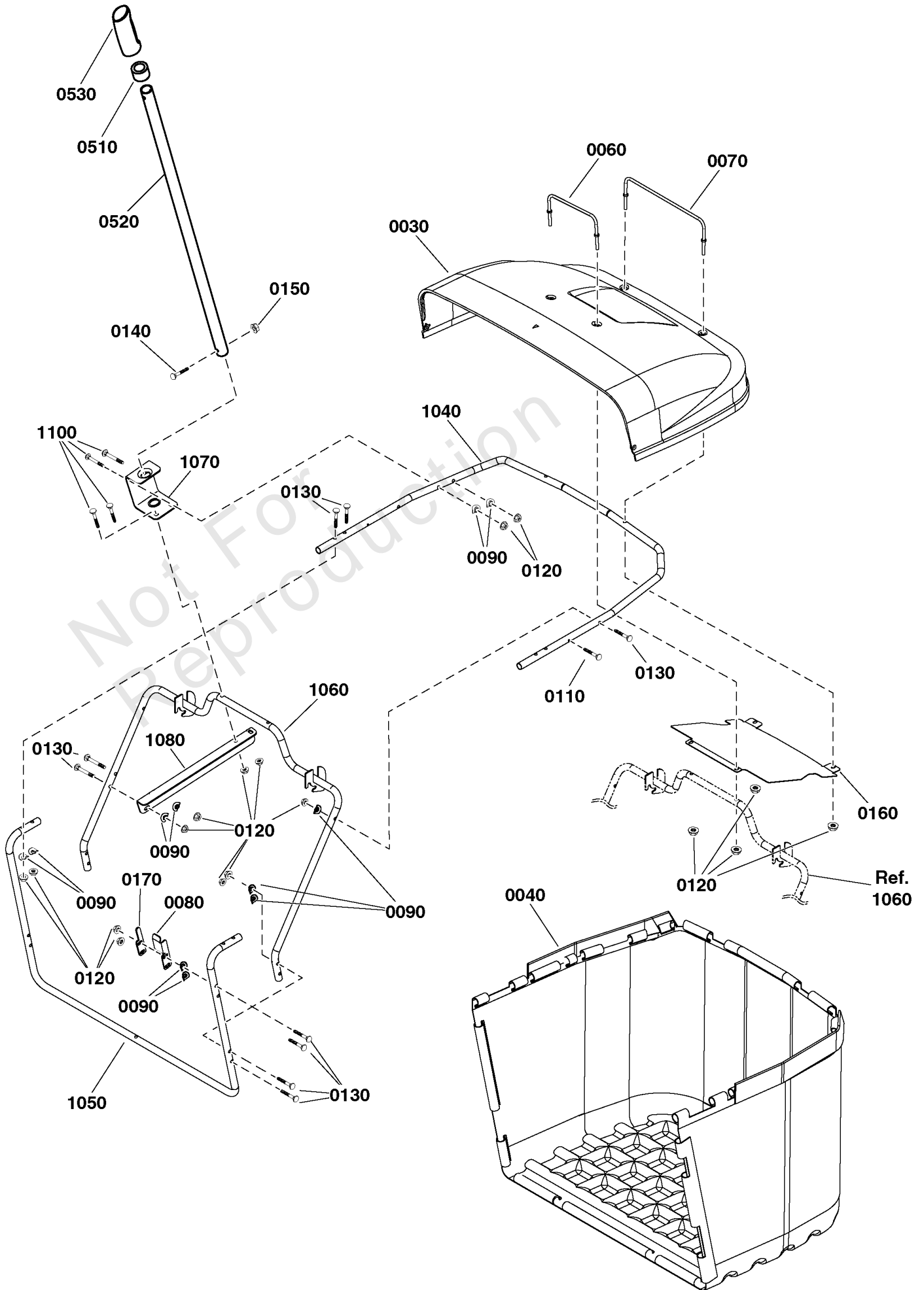
Backplate Group

| REF NO | PART NO | QTY | DESCRIPTION |
|---------|-------------|-----|--|
| 0010 | 009X39MA | 2 | BOLT, Shoulder, 3/8-16 x 1/2 |
| 0020 | 165X75MA | 2 | SPRING, Extension |
| 0030 | 880760YP | 2 | SCREW, #10-14 x .88, Plastite |
| 0040 | 885618YP | 1 | COVER, Bag Full Switch |
| 0050 | 84003003 | 1 | CHUTE, 42" |
| 0060 | 885852BMYP | 1 | PLATE, Rotation, LH |
| 0070 | 885853BMYP | 1 | PLATE, Rotation, RH |
| 0080 | 1758498YP | 1 | TRANSITION PIECE |
| 0090 | 1758530BMYP | 2 | LATCH |
| 0100 | 1758925BMYP | 2 | SUPPORT, Bagger |
| 0110 | 84003064 | 1 | SWITCH, Bag Full |
| 0120 | 84003066 | 1 | BRACKET, Bag Present |
| 0130 | 1755620AYP | 1 | ACTUATOR, Switch |
| 0140 | 84003063 | 1 | BACKPLATE ASSEMBLY |
| 0140-10 | 885862YP | 1 | KIT TOWBRKT |
| 0140-20 | 885497AYP | 1 | BRACKET, Bagger Latch |
| 0140-30 | ----- | 1 | Back Plate -(Not Serviceable) |
| 0140-40 | 84003055 | 1 | BRACKET, Support |
| 0140-50 | 703409 | 2 | NUT, Serrated Lock Flange, 5/16-18 |
| 0140-60 | 703228 | 3 | SCREW, Washer Head Taptite, 5/16-18 X 3/4 |
| 0140-70 | 703410 | 2 | BOLT, Serrated Flange, 5/16-18 X 1.0 |
| 0140-80 | 704054 | 2 | PIN, Threaded Shoulder, 3/8-16 X 11/16 |
| 0140-90 | 703893 | 2 | NUT, Hex, Flange, Two Way Lock, 3/8-16 |
| 0150 | 7023354YP | 1 | SWITCH, Seat, Push Button (NC) |
| 0170 | 703409 | 10 | NUT, Serrated Lock Flange, 5/16-18 |
| 0190 | 703300 | 2 | PIN, Hair, 3/32 x 1 5/8 |
| 0200 | 703228 | 10 | SCREW, Washer Head Taptite, 5/16-18 X 3/4 |
| 0210 | 1919326SM | 4 | WASHER, 5/16 |
| 0220 | 703167 | 8 | SCREW, Hex Washer Head, Taptite, 5/16-18 x 1-1/4 |
| 0230 | 703237 | 2 | CAPSCREW, Hex Head, 3/8-16 x 3/4 |
| 0240 | 703185 | 4 | BOLT, Carriage, 5/16-18 X 3/4 |
| 0260 | 703410 | 2 | BOLT, Serrated Flange, 5/16-18 X 1.0 |
| 0270 | 703853 | 2 | WASHER, 1/2 |
| 0280 | 703893 | 4 | NUT, Hex, Flange, Two Way Lock, 3/8-16 |
| 0290 | 703949 | 1 | SCREW, Washer Head, 5/16-18 X 5/8 |
| 0300 | 703354 | 4 | SCREW, Flange, Whiz-Lock, 5/16-18 X 3/4 |

Collector Group

Note: Unless noted otherwise, use the standard torque specifications

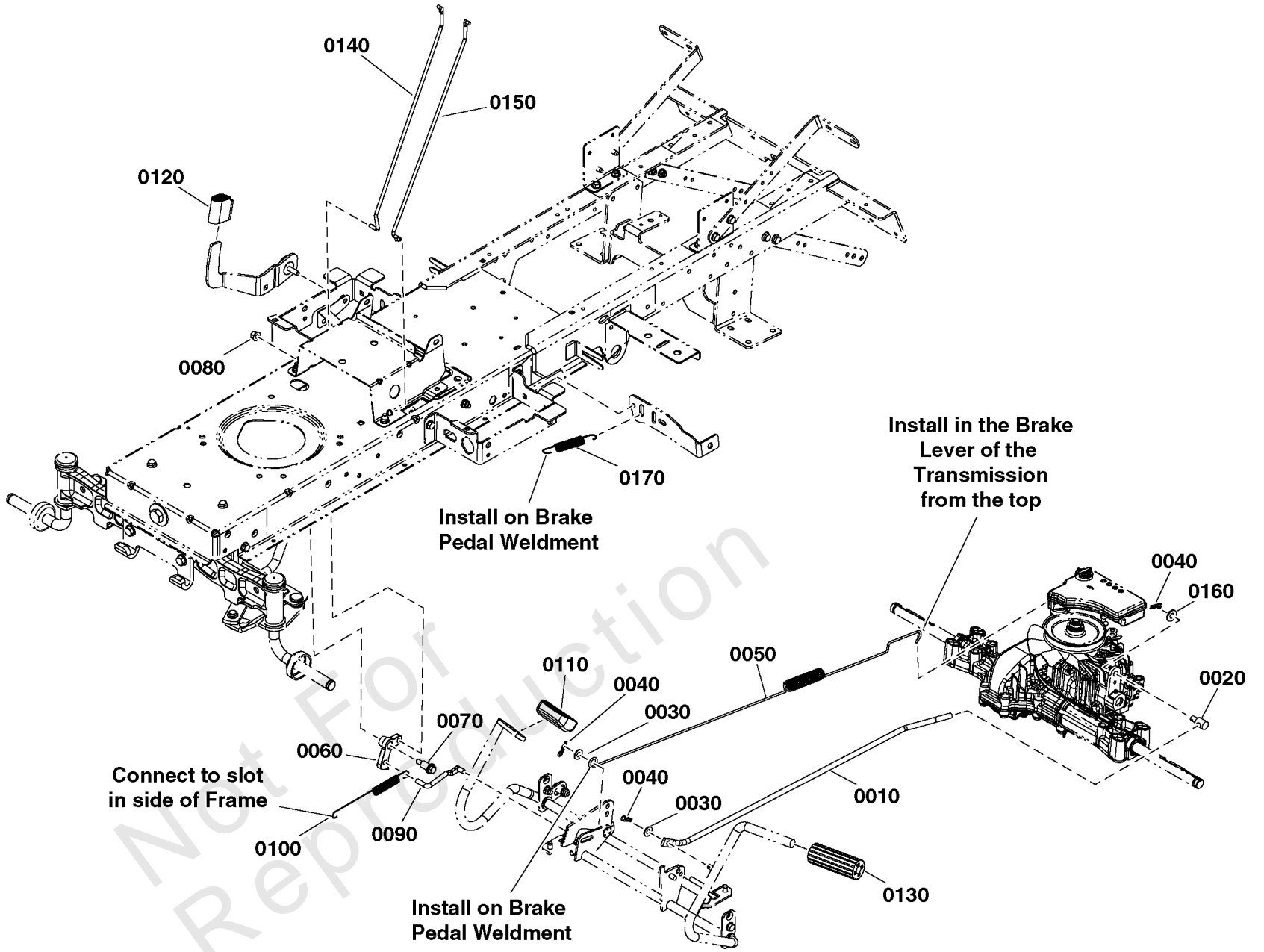
Mfg. No: 2691509-00



Collector Group

| REF NO | PART NO | QTY | DESCRIPTION |
|--------|-------------|-----|---------------------------------|
| 0030 | 1758510YP | 1 | COVER, Collector |
| 0040 | 1758532YP | 1 | BAG, Collector |
| 0060 | 84002986 | 1 | HANDLE, Front |
| 0070 | 84002988 | 1 | HANDLE, Back |
| 0080 | 1758781BMYP | 1 | SWITCH PLATE |
| 0090 | 880615YP | 14 | WASHER |
| 0110 | 885564YP | 2 | SCREW, Torx, 1/4-20 |
| 0120 | 703115 | 20 | NUT, Flange Nylock, 5/16-18 |
| 0130 | 706883 | 12 | SCREW, 5/16-18 x 2 |
| 0140 | 001X94MA | 1 | BOLT, Hex, 1/4-20 x 1-1/4 |
| 0150 | 015X89MA | 1 | NUT, Hex Flange, 1/4-20 |
| 0160 | 1758926BMYP | 1 | SHIELD, Collector |
| 0510 | 885433YP | 1 | ADJUSTER, Handle |
| 0520 | 885518AYP | 1 | HANDLE, Bagger |
| 0530 | 1723359SM | 1 | GRIP |
| 1040 | 1758255BMYP | 1 | FRAME, Bagger Support, Upper |
| 1050 | 1758256BMYP | 1 | FRAME, Bagger Support, Front |
| 1060 | 1758329BMYP | 1 | FRAME, Bagger Support |
| 1070 | 1758357BMYP | 1 | SUPPORT, Dump Handle |
| 1080 | 1758659BMYP | 1 | BRACKET Dump Handle |
| 1100 | 703296 | 4 | BOLT, Carriage, 5/16-18 x 1 1/2 |

Not For
Reproduction



Controls Group

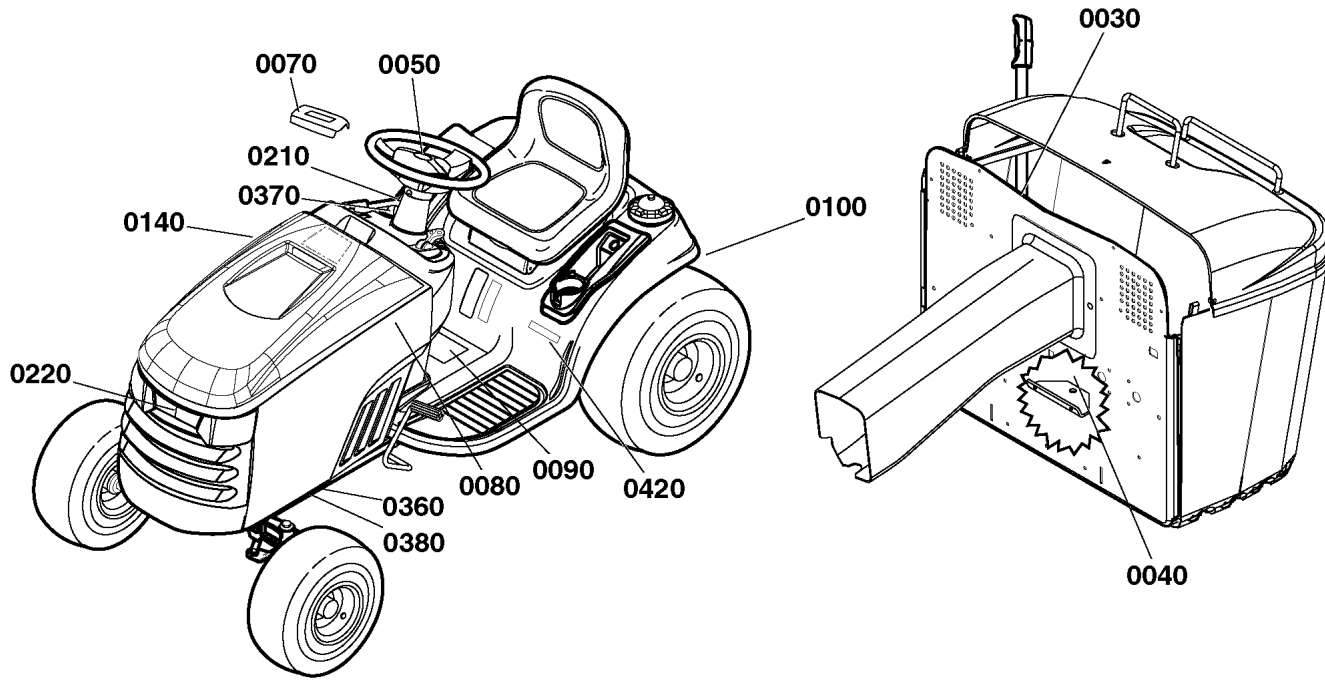
| REF NO | PART NO | QTY | DESCRIPTION |
|--------|-----------|-----|---|
| 0010 | 84002680 | 1 | ROD |
| 0020 | 84002684 | 1 | NUT, Adjustment |
| 0030 | 1919326SM | 2 | WASHER, 5/16 |
| 0040 | 703430 | 3 | PIN, 13X1.19 |
| 0050 | 84002686 | 1 | SPRING, Brake |
| 0060 | 1727897SM | 1 | LATCH, Cruise |
| 0070 | 1728976SM | 1 | BOLT, Shoulder, 5/16-18 x 1-5/8 |
| 0080 | 703115 | 1 | NUT, Flange Nylock, 5/16-18 |
| 0090 | 1727899SM | 1 | ROD, Cruise Latch, 5/16 Dia. x 2-13/16 Long |
| 0100 | 2159181SM | 1 | SPRING, Extension, 9/16 OD x 7-3/4 |
| 0110 | 1721675SM | 1 | PAD, Foot Pedal, Forward |
| 0120 | 1727259SM | 1 | PAD, Foot Pedal, Reverse |
| 0130 | 1727261SM | 1 | PEDAL, Brake Pad |
| 0140 | 1739877YP | 1 | ROD, Cruise Latch, 1/4 Dia. x 17 |
| 0150 | 1739876YP | 1 | ROD, Parking Brake, 1/4 Dia. x 16-3/8 Long |
| 0160 | 703878 | 1 | WASHER, Flat, 13/32 x 7/8 x .083 |
| 0170 | 84002687 | 1 | SPRING, Extension |

Not For
Reproduction

Decals Group

Note: Unless noted otherwise, use the standard torque specifications

Mfg. No: 2691509-00



Simplicity

0080 / 0140



0050



0220



0210

SRD360

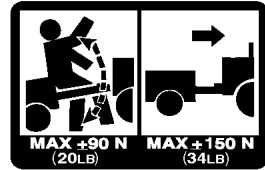
0370

REGENT RD S

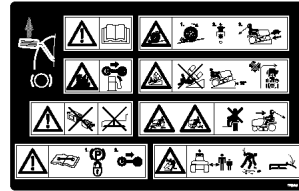
0420



0030



0040



0090



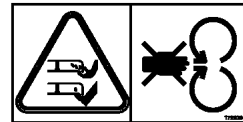
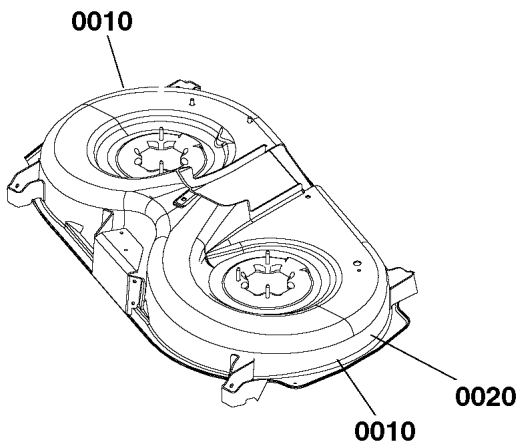
0100



0360



0380



0010

42"
107cm

0020

Decals Group

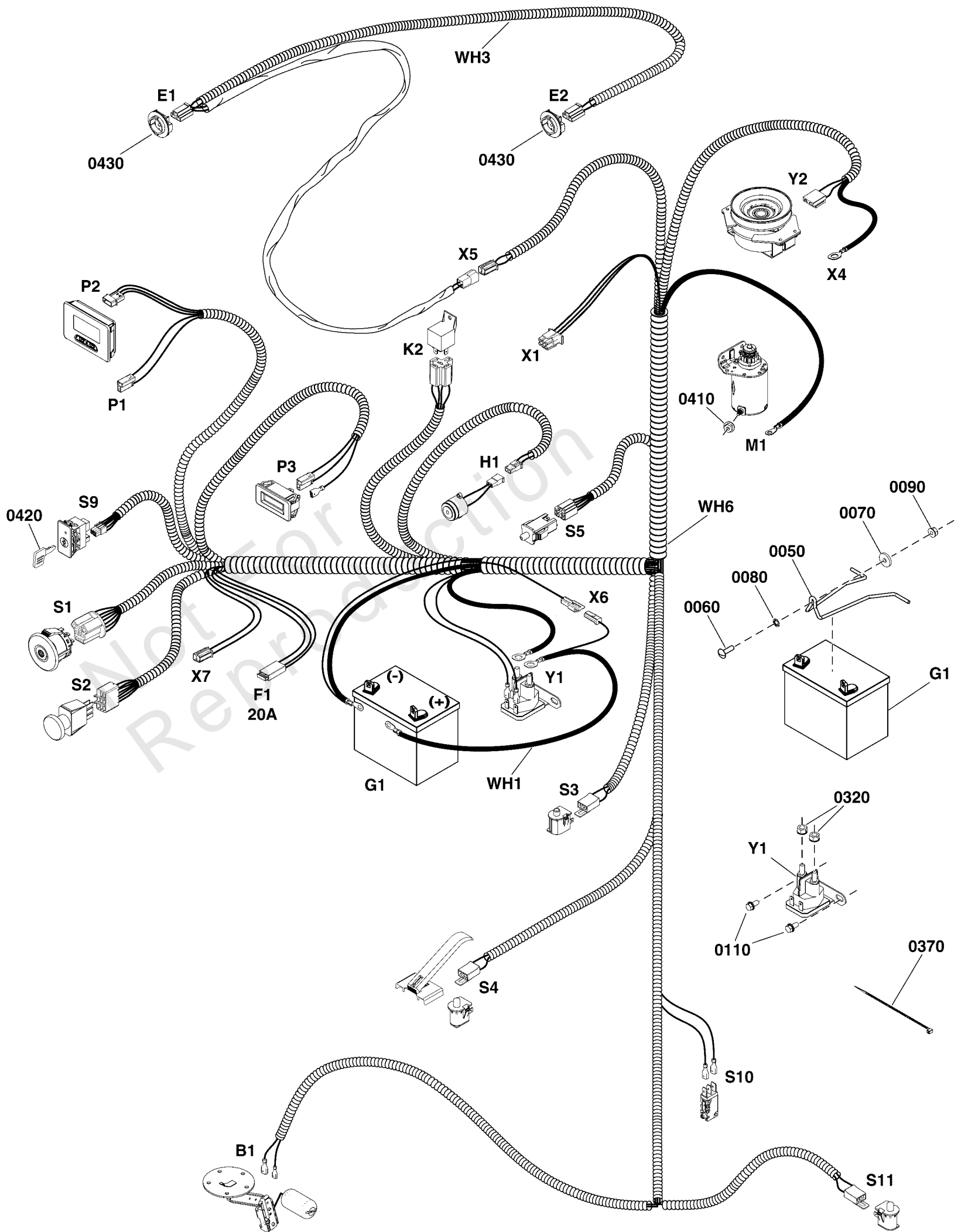
| REF NO | PART NO | QTY | DESCRIPTION |
|--------|-----------|-----|--|
| 0010 | 1720389SM | 2 | DECAL, Danger Rotating Blade Symbols |
| 0020 | 1755716YP | 1 | DECAL, 42"/107cm |
| 0030 | 1721107SM | 1 | DECAL, Danger Discharge Tube, Symbols |
| 0040 | 48X511MA | 1 | DECAL, Drawbar Warning Symbol |
| 0050 | 1755843YP | 1 | DECAL, Logo, Steering Wheel |
| 0070 | 84003162 | 1 | CAP, Steering Wheel |
| 0080 | 1755900YP | 1 | DECAL, Simplicity Letters, LH |
| 0090 | 1750191YP | 1 | DECAL, Tunnel, Export |
| 0100 | 1730202SM | 1 | DECAL, Transmission Tow / Release Lever |
| 0140 | 1755901YP | 1 | DECAL, Simplicity Letters, RH |
| 0210 | 1754246YP | 1 | DECAL, Powered by Briggs |
| 0220 | 1755798YP | 1 | DECAL, 3D, Logo, Simplicity |
| 0360 | 709953 | 1 | DECAL, EAC Compliance |
| 0370 | 84002994 | | DECAL, Model -(SRD360) |
| 0380 | 706112 | 1 | LABEL, Solely For Export - Exempt US Emissions |
| 0420 | 84003163 | 1 | DECAL, Model -(Regent RD, Suspension) |

Not For
Reproduction

Electrical Group

Note: Unless noted otherwise, use the standard torque specifications

Mfg. No: 2691509-00



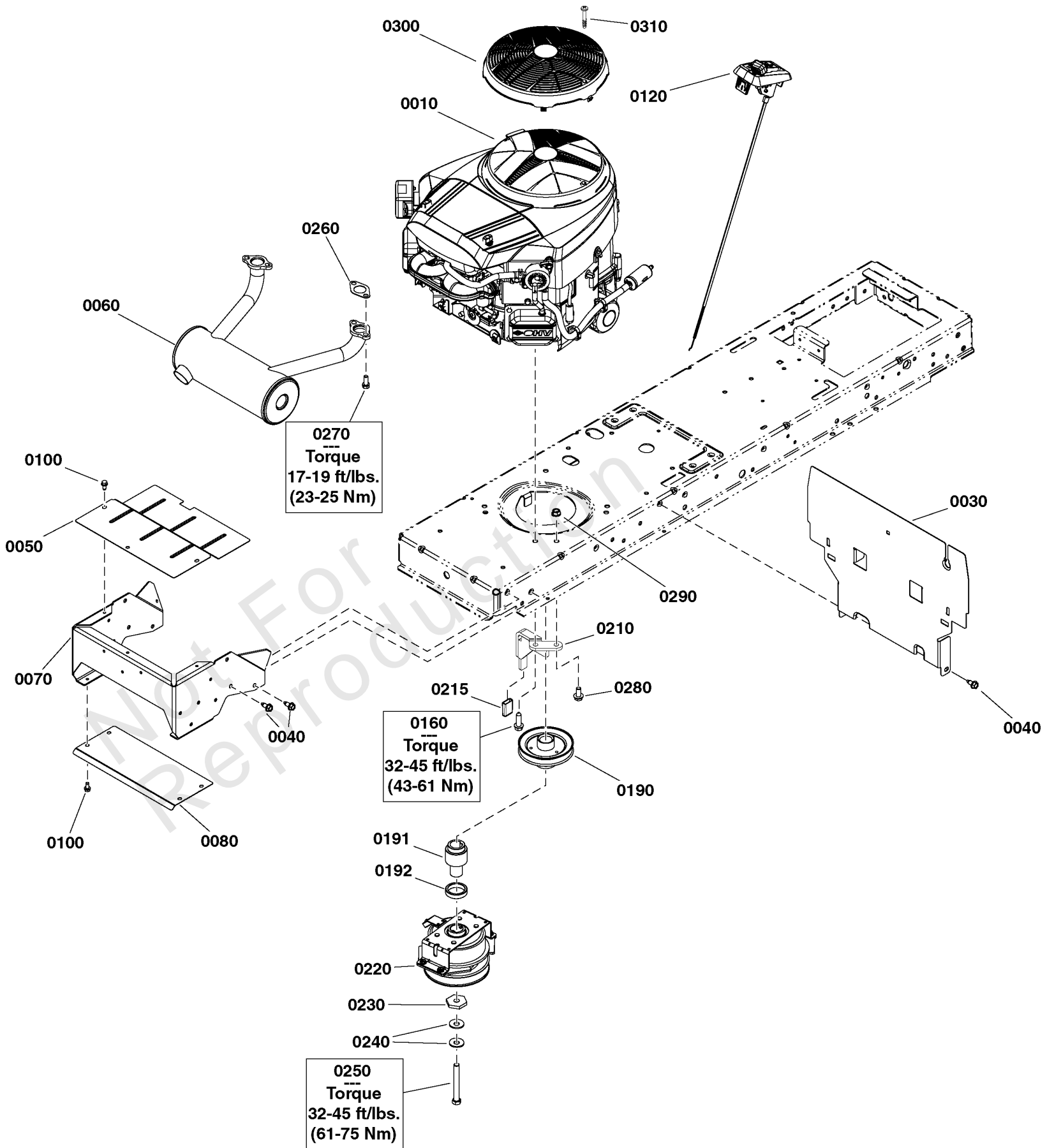
Electrical Group

| REF NO | PART NO | QTY | DESCRIPTION |
|--------|-----------|-----|---|
| B1 | 1758611YP | 1 | SENDER, Fuel |
| E1 | ----- | 1 | HEADLIGHT, Left |
| E2 | ----- | 1 | HEADLIGHT, Right |
| F1 | 1731957SM | 1 | FUSE, Wiring Harness |
| G1 | ----- | 1 | BATTERY, 12 Volt, 230 CCA |
| H1 | 1758779YP | 1 | BUZZER, Bag Full |
| K2 | 1726829SM | 1 | Relay(s) |
| M1 | 592599 | 1 | MOTOR, Starter |
| P1 | ----- | 1 | CONNECTOR, Hour Meter -(Not Used) |
| P2 | 1758654YP | 1 | DISPLAY, Mini Meter |
| P3 | 1758683YP | 1 | GAUGE, Fuel |
| S1 | 1761507YP | 1 | SWITCH, Ignition |
| S2 | 1722887YP | 1 | SWITCH, PTO Push/Pull, Yel Knob w/Symbols, 8 Terminal |
| S3 | 1720411SM | 1 | SWITCH, NO, Black, Push Button W/Boot -(Reverse Switch) |
| S4 | 1738015YP | 1 | SWITCH, Seat -(Used With Mesh Seat) |
| S4 | 7023354YP | 1 | SWITCH, Seat, Push Button (NC) |
| S5 | 7022886YP | 1 | SWITCH, DP, NO/NC, Snap-In -(Brake Pedal Switch) |
| S9 | 1761897YP | 1 | SWITCH, Reverse Mow Option |
| S10 | 84003064 | 1 | SWITCH, Bag Full |
| S11 | 7023354YP | 1 | SWITCH, Seat, Push Button (NC) |
| WH1 | 1759779YP | 1 | HARNESS, Battery, Solenoid |
| WH3 | 1761298YP | 1 | HARNESS, Headlight |
| WH6 | 84002998 | 1 | HARNESS, Main |
| X1 | ----- | 1 | CONNECTOR, Engine |
| X4 | ----- | 1 | CHASSIS GROUND POINT |
| X5 | ----- | 1 | CONNECTOR, Main Harness to Headlight Harness |
| X6 | ----- | 1 | CONNECTOR, Battery Solenoid Harness to Main Harness |
| X7 | ----- | 1 | CONNECTOR, Main Harness to Height of Cut Harness -(Not Used) |
| Y1 | 1755381YP | 1 | SOLENOID -(Starter Solenoid) |
| Y2 | 1760986YP | 1 | OGURA CLUTCH -(PTO Clutch) |
| 0050 | 1730007SM | 1 | HOLD DOWN, Battery, 1/4 Dia. |
| 0060 | 1931318SM | 1 | BOLT, Carriage, Short Neck, 1/4-20 x 7/8 G5 |
| 0070 | 703229 | 1 | WASHER, 1/4 x 27/32 |
| 0080 | 703826 | 1 | NUT, Nylock, 5/16-18 |
| 0090 | 703463 | 1 | NUT, Nylock Flanged, 1/4-20 |
| 0110 | 704130 | 2 | SCREW, Hex Head, 1/4-20 X 1/2 |
| 0320 | 2860750SM | 2 | NUT, Hex Lock, KEPS, 5/16-24 |
| 0370 | 703586 | 3 | TIE, Cable |
| 0410 | 703061 | 1 | NUT, 1/4-20, Keps, Conical Washer |
| 0420 | 1726557SM | 2 | KEY, No Mow Module (Yellow) |
| 0430 | 1760239YP | 2 | LED HEADLIGHT AND SOCKET ASSEMBLY |

Engine Group

Note: Unless noted otherwise, use the standard torque specifications

Mfg. No: 2691509-00

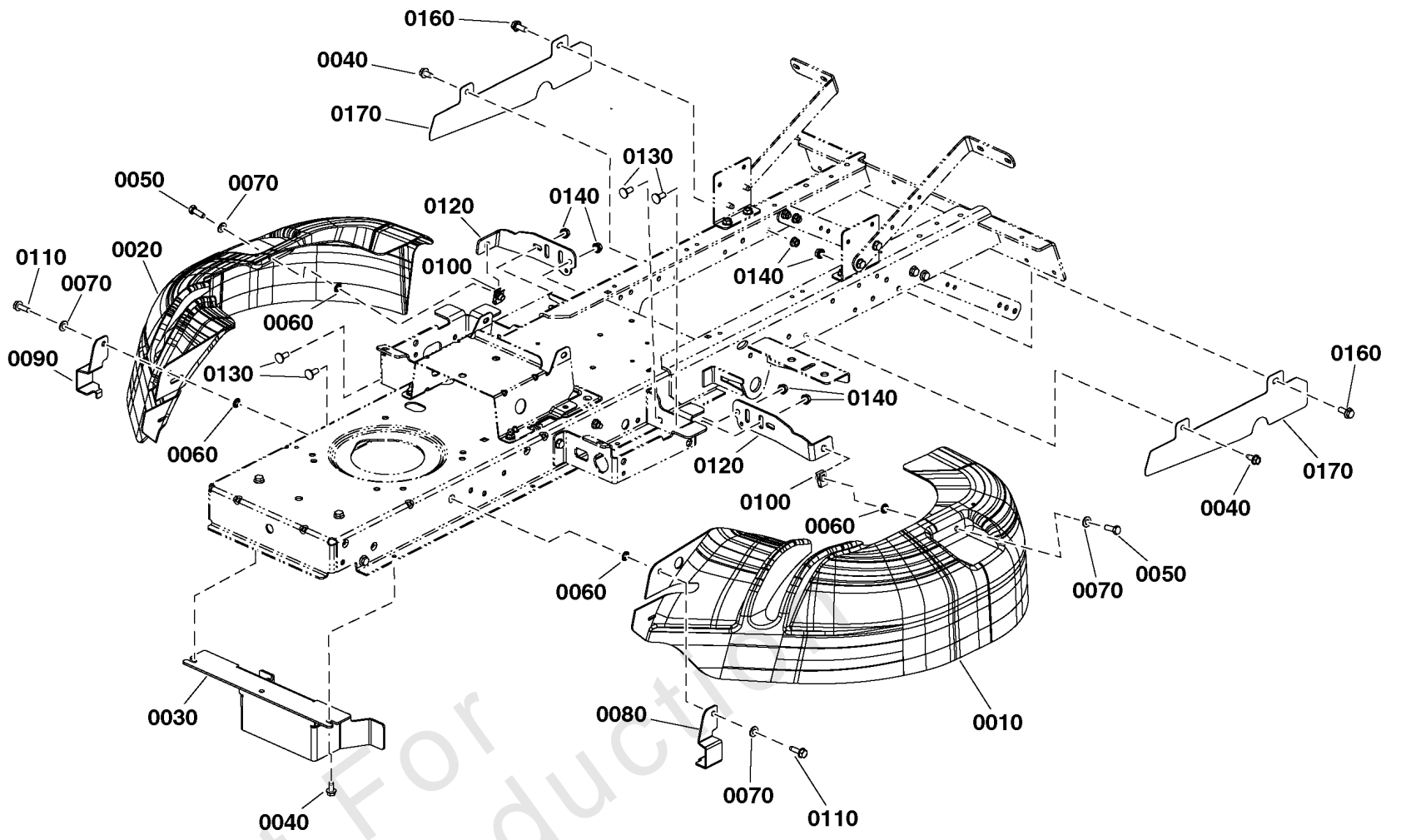


Engine Group

| REF NO | PART NO | QTY | DESCRIPTION |
|--------|----------------|-----|--|
| 0010 | 44U877-0004-B5 | 1 | * ENGINE, Briggs & Stratton Twin, Pro Series. Mod. 44U877-0004-B5 -(Engine Model: 44U877-0004-B5) |
| 0030 | 1738380AYP | 1 | HEAT SHIELD, Engine |
| 0040 | 703228 | 6 | SCREW, Washer Head Taptite, 5/16-18 X 3/4 |
| 0050 | 1761064CJYP | 1 | HEAT SHIELD |
| 0060 | 1761127YP | 1 | MUFFLER, Twin |
| 0070 | 1761211CJYP | 1 | Support, Muffler |
| 0080 | 1761063CJYP | 1 | HEAT SHIELD, Bottom |
| 0100 | 704130 | 7 | SCREW, Hex Head, 1/4-20 X 1/2 |
| 0120 | 1759240YP | 1 | THROTTLE |
| 0160 | 2828635SM | 4 | SCREW, Taptite, 3/8-16 X 1 1/4 |
| 0190 | 84002520 | 1 | PULLEY, Engine |
| 0191 | 885679YP | 1 | SPACER, Electric Clutch |
| 0192 | 885810YP | 1 | SPACER, Electric Clutch, Lower |
| 0210 | 84002532 | 1 | ANCHOR, Clutch |
| 0215 | 84002544 | 1 | Sleeve, Clutch Anchor |
| 0220 | 84002545 | 1 | CLUTCH, Ogura, Offset |
| 0230 | 1708264SM | 1 | WASHER, Hex |
| 0240 | 1960769YP | 2 | WASHER, Belleville |
| 0250 | 7102075YP | 1 | CAPSCREW, Hex Head, 7/16-20 x 5, G5 |
| 0260 | 690970 | 2 | GASKET, Exhaust |
| 0270 | 690341 | 4 | SCREW |
| 0280 | 703955 | 1 | BOLT, 3/8-16X0.75, Serrated Flange, GR5, Zinc/Clear |
| 0290 | 703333 | 1 | NUT, 3/8-16, Flanged Lock, GR5, Zinc/Clear |
| 0300 | 797420YP | 1 | GUARD, Debris Screen |
| 0310 | 799359 | 1 | SCREW |

Footnotes:

Note* See your local Briggs & Stratton distributor for parts & service.



EU Guard Group

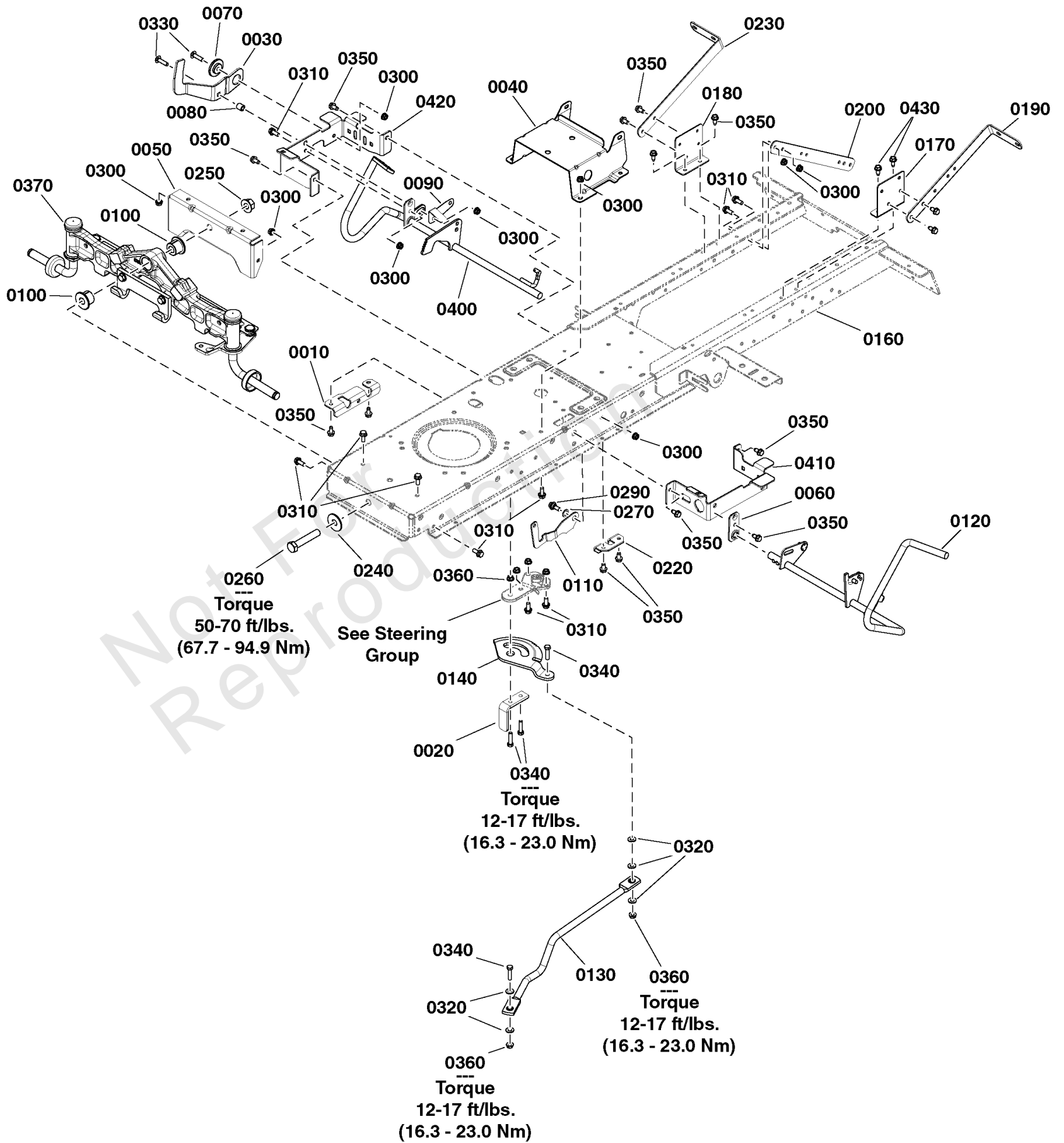
| REF NO | PART NO | QTY | DESCRIPTION |
|--------|-------------|-----|--|
| 0010 | 1759737YP | 1 | GUARD, Front, LH |
| 0020 | 1759738YP | 1 | GUARD, Front, RH |
| 0030 | 84003099 | 1 | GUARD, Clutch |
| 0040 | 703228 | 4 | SCREW, Washer Head Taptite, 5/16-18 X 3/4 |
| 0050 | 703408 | 2 | SCREW, Hex Head Cap, 5/16-18 X 7/8, GR5 |
| 0060 | 772145 | 4 | KIT, Bearing Mounting Plate |
| 0070 | 703350 | 4 | WASHER, 5/16, Flat SAE, Zinc/Clear |
| 0080 | 1759985BMYP | 1 | SUPPORT, Guarding, L.H. |
| 0090 | 1759989BMYP | 1 | SUPPORT, Guarding, R.H. |
| 0100 | 1935255SM | 2 | NUT, Speed, Lug Type, 5/16-18 |
| 0110 | 704146 | 2 | SCREW, Hex Washer Head, Taptite, 5/16-18 x 1 |
| 0120 | 1759729CJYP | 2 | SUPPORT |
| 0130 | 703185 | 4 | BOLT, Carriage, 5/16-18 X 3/4 |
| 0140 | 703409 | 6 | NUT, Serrated Lock Flange, 5/16-18 |
| 0160 | 703354 | 2 | SCREW, Flange, Whiz-Lock, 5/16-18 X 3/4 |
| 0170 | 84003100 | 2 | GUARD, Suspension |

Not For
Reproduction

Frame Group

Note: Unless noted otherwise, use the standard torque specifications

Mfg. No: 2691509-00



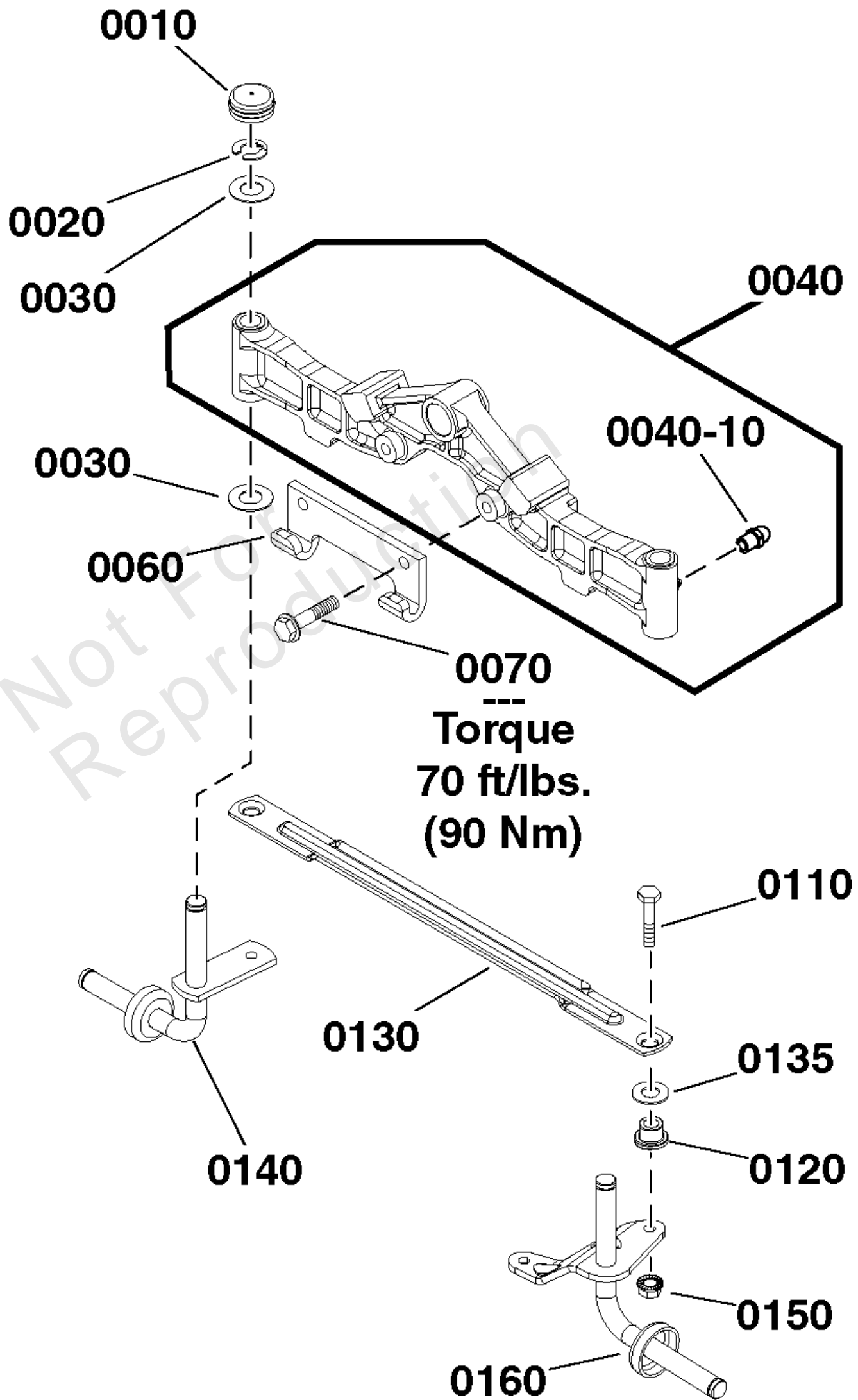
Frame Group

| REF NO | PART NO | QTY | DESCRIPTION |
|--------|-------------|-----|---|
| 0010 | 84003022 | 1 | BRACKET, Pedal Pivot |
| 0020 | 84003023 | 1 | UPSTOP |
| 0030 | 1727246SM | 1 | PEDAL, Reverse |
| 0040 | 1727282SM | 1 | SUPPORT, Battery |
| 0050 | 1727902SM | 1 | PLATE, Axle Support |
| 0060 | 1727911ASM | 1 | PLATE, Bearing |
| 0070 | 1727935SM | 1 | SPACER, Pivot |
| 0080 | 1728024SM | 1 | SPACER, Foot Pedal |
| 0090 | 1728025BMYP | 1 | ACTUATOR, RMO Switch |
| 0100 | 1730186SM | 2 | BUSHING, Axle Pivot |
| 0110 | 1761926CJYP | 1 | LATCH, PARKING BRAKE |
| 0120 | 84003024 | 1 | PEDAL ASSEMBLY |
| 0130 | 1738051YP | 1 | LINK, Drag (with Bearing), 5/16 |
| 0140 | 1751110YP | 1 | GEAR, Steering |
| 0160 | ----- | 1 | FRAME -(Not a serviceable part) |
| 0170 | 84003025 | 1 | BRACKET, SUpport LH |
| 0180 | 84003026 | 1 | BRACKET, Support RH |
| 0190 | 84003027 | 1 | SUPPORT, Back Plate |
| 0200 | 84003028 | 2 | SUPPORT, Lower Back Plate |
| 0220 | 84003029 | 1 | BRACKET, Pivot |
| 0230 | 84003030 | 1 | SUPPORT, Upper, Back Plate |
| 0240 | 1960035SM | 1 | WASHER, 5/8 |
| 0250 | 84003031 | 1 | NUT, Hex Flange 5/8-11 |
| 0260 | 2860744SM | 1 | CAPSCREW, Hex Head, 5/8-11 x 3 1/4 |
| 0270 | 7014296YP | 1 | WASHER, Shim |
| 0290 | 703851 | 1 | BOLT, Shoulder, 5/16-18 x 1 1/8 |
| 0300 | 703409 | 14 | NUT, Serrated Lock Flange, 5/16-18 |
| 0310 | 703354 | 13 | SCREW, Flange, Whiz-Lock, 5/16-18 X 3/4 |
| 0320 | 1919326SM | 5 | WASHER, 5/16 |
| 0330 | 703446 | 2 | BOLT, Carriage, 5/16-18 X 1 1/4, GR5 |
| 0340 | 703570 | 4 | CAPSCREW, Hex Head, 5/16-18 x 1 1/4 |
| 0350 | 703949 | 13 | SCREW, Washer Head, 5/16-18 X 5/8 |
| 0360 | 704067 | 6 | NUT, 5/16-18, Hex Flange, Center Lock |
| 0370 | ----- | 1 | Refer to: Front Axle Group |
| 0400 | 84003032 | 1 | PEDAL ASSEMBLY |
| 0410 | 1761913AYP | 1 | SUPPORT, FOOTREST |
| 0420 | 1759842BMYP | 1 | SUPPORT, Front Footrest, RH |
| 0430 | 703228 | 4 | SCREW, Washer Head Taptite, 5/16-18 X 3/4 |

Front Axle Group

Note: Unless noted otherwise, use the standard torque specifications

Mfg. No: 2691509-00



Front Axle Group

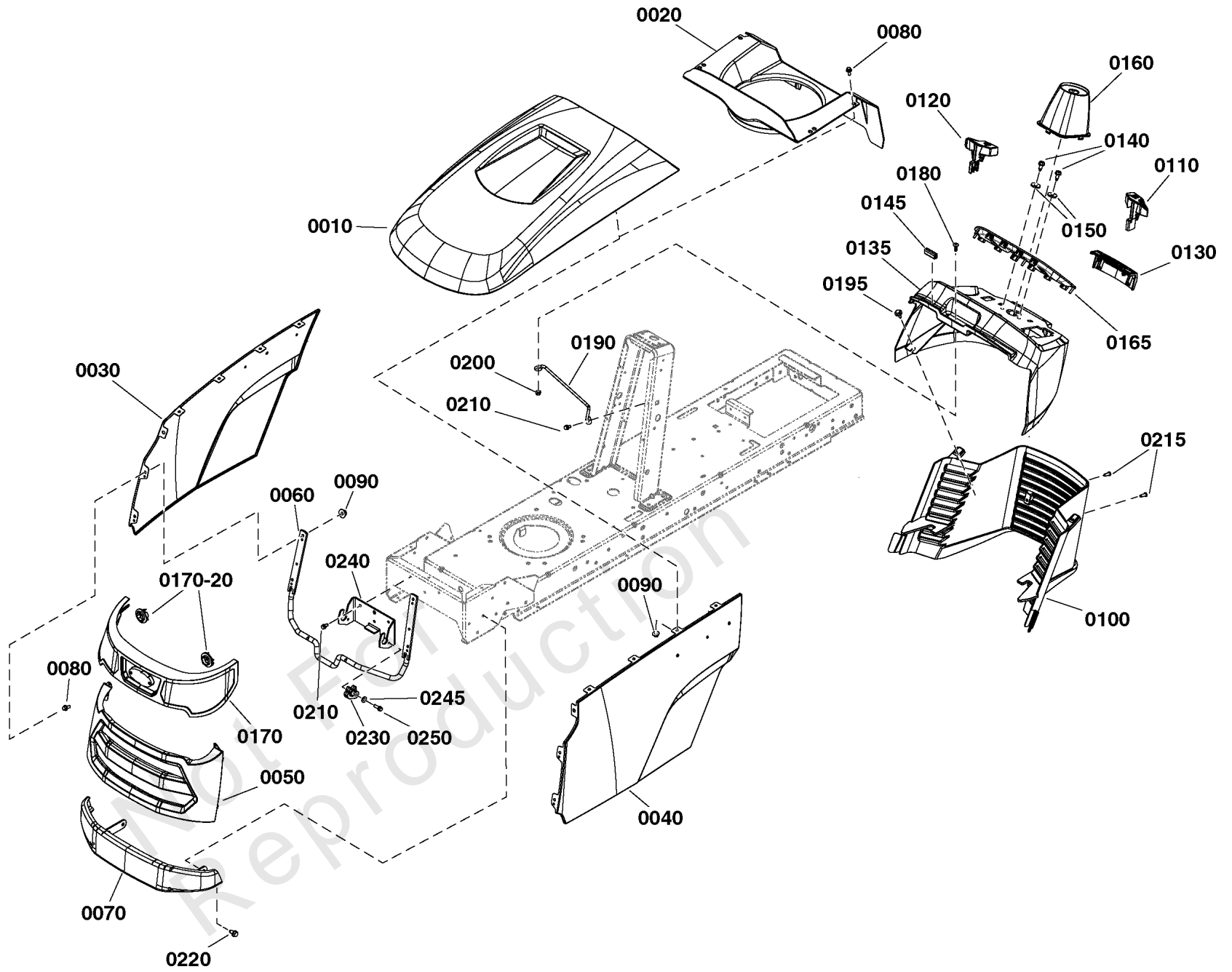
| REF NO | PART NO | QTY | DESCRIPTION |
|---------|------------|-----|---|
| 0010 | 1734135SM | 2 | CAP, Hub |
| 0020 | 1611710SM | 2 | E-RING, 3/4 |
| 0030 | 2860183SM | 4 | WASHER, Flat, 3/4 |
| 0040 | 1756386YP | 1 | AXLE, Front |
| 0040-10 | 1704314SM | 2 | FITTING, Zerk -(Included with Ref. No. 0040) |
| 0060 | 1721918ASM | 1 | HOOK, Mower, Hitch |
| 0070 | 1960652SM | 2 | SCREW, Hex Flange, Whiz Lock, 7/16-14 x 1-1/2 |
| 0110 | 1960032SM | 2 | SCREW, Hex Head, 3/8-16 x 1 1/4 |
| 0120 | 1731912SM | 2 | BUSHING, 3/8 ID x 5/8 OD x 1/2 |
| 0130 | 1751964YP | 1 | TIE ROD |
| 0135 | 1960703SM | 2 | WASHER, 5/8 |
| 0140 | 1727872ASM | 1 | SPINDLE ASSEMBLY, R.H. |
| 0150 | 703893 | 2 | NUT, Hex, Flange, Two Way Lock, 3/8-16 |
| 0160 | 1751922YP | 1 | SPINDLE ASSEMBLY, L.H. |

Not For
Reproduction

Hood, Grille & Dash Group

Note: Unless noted otherwise, use the standard torque specifications

Mfg. No: 2691509-00



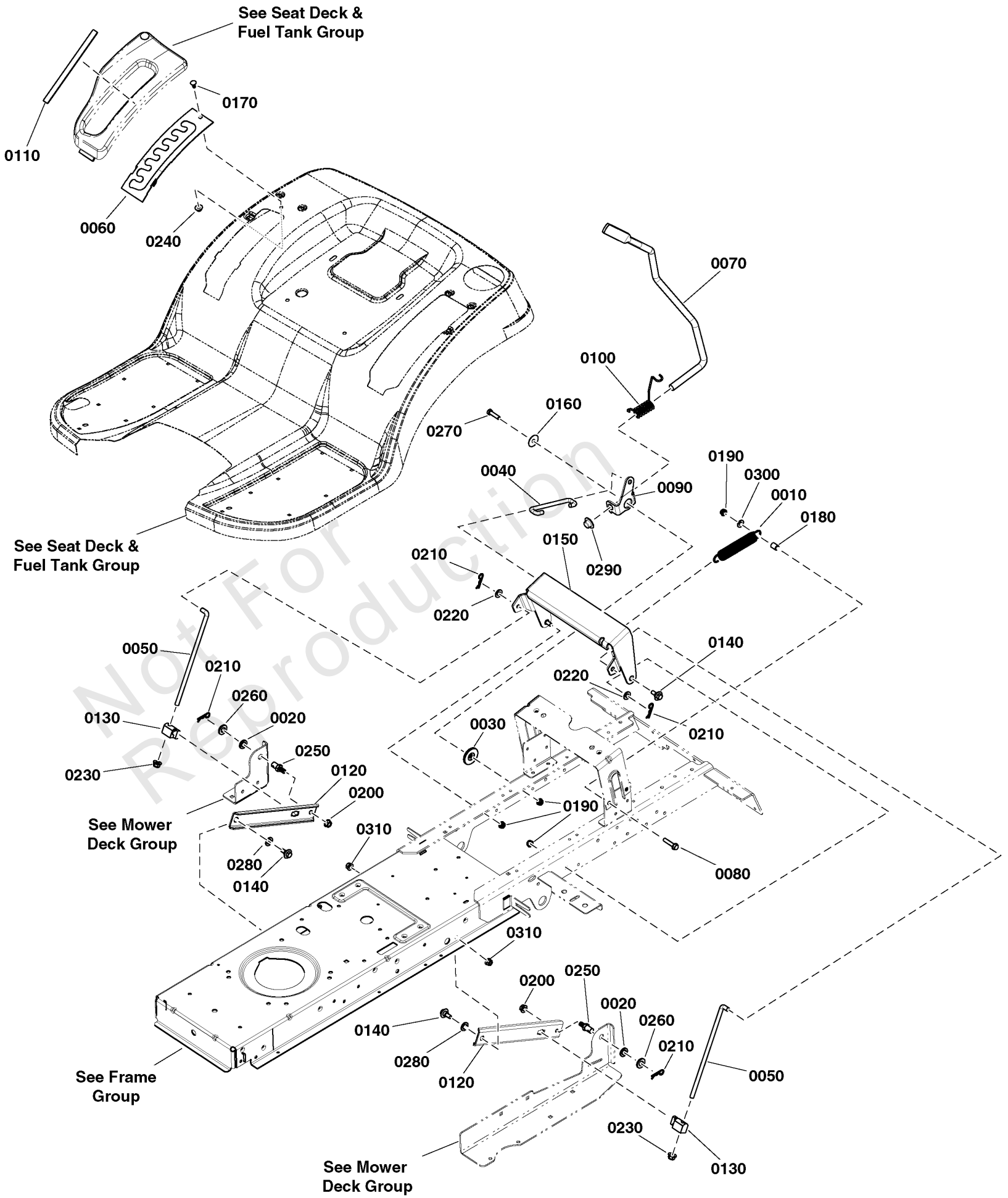
Hood, Grille & Dash Group

| REF NO | PART NO | QTY | DESCRIPTION |
|---------|-------------|-----|---|
| 0010 | 1754921CYP | 1 | HOOD, w/Scoop |
| 0020 | 7102326YP | 1 | AIR DUCT, Plenum |
| 0030 | 1761173CYP | 1 | PANEL, Side, RH |
| 0040 | 1761174CYP | 1 | PANEL, Side, LH |
| 0050 | 1761029CYP | 1 | GRILLE |
| 0060 | 1761070YP | 1 | ROD, Hood Hinge |
| 0070 | 1761429AYP | 1 | GRILLE, Front |
| 0080 | 1960295SM | 12 | CAPSCREW, Hex Flange, Whiz Lock, 1/4-20 x 5/8 |
| 0090 | 703161 | 12 | NUT, 1/4-20, Hex Flange Whiz Lock |
| 0100 | 1761508YP | 1 | LOWER DASH ASSEMBLY |
| 0110 | 1761401YP | 1 | KNOB, Parking Brake |
| 0120 | 1761402YP | 1 | KNOB, Cruise |
| 0130 | 1761509YP | 1 | DECORATIVE TRIM |
| 0135 | 1761253YP | 1 | DASH, Upper |
| 0140 | 1960541SM | 2 | CAPSCREW, Hex Head Taptite, 5/16-18 x 3/4 |
| 0145 | 1761773YP | 2 | EDGING, Rubber |
| 0150 | 703298 | 2 | WASHER, 5/16 |
| 0160 | 1761399YP | 1 | COVER, Steering Shaft |
| 0165 | 84002723 | 1 | DASH BEZEL |
| 0170 | 1761035YP | 1 | HEADLIGHT ASSEMBLY -(Incl. Ref. Nos. 0170-20) |
| 0170-20 | 1760239YP | 2 | LED HEADLIGHT AND SOCKET ASSEMBLY -(Included with Ref. No. 0170) |
| 0180 | 770135 | 1 | SCREW, Truss HD, 1/4-20 x 3/4 |
| 0190 | 1761481YP | 1 | ROD, Dash Support |
| 0195 | 2860664SM | 2 | SCREW, Conical Washer, 1/4-20 x 7/8 Dog Point |
| 0200 | 703463 | 1 | NUT, Nylock Flanged, 1/4-20 |
| 0210 | 704130 | 4 | SCREW, Hex Head, 1/4-20 X 1/2 |
| 0215 | 1960556SM | 2 | SCREW, Pan Head Torx, Taptite, 1/4-20 x 3/4 |
| 0220 | 703985 | 4 | SCREW, Hex Washer Head, Taptite, 5/16-18 x 1/2 |
| 0230 | 1761068YP | 2 | CLIP, Hood Hinge |
| 0240 | 1761212CJYP | 1 | BRACKET, Hood Hinge |
| 0245 | 703332 | 2 | WASHER, Flat, 1/4 |
| 0250 | 703466 | 2 | SCREW, Self Tapping, 1/4-20 x 3/4, GR5 |

Lift Group

Note: Unless noted otherwise, use the standard torque specifications

Mfg. No: 2691509-00



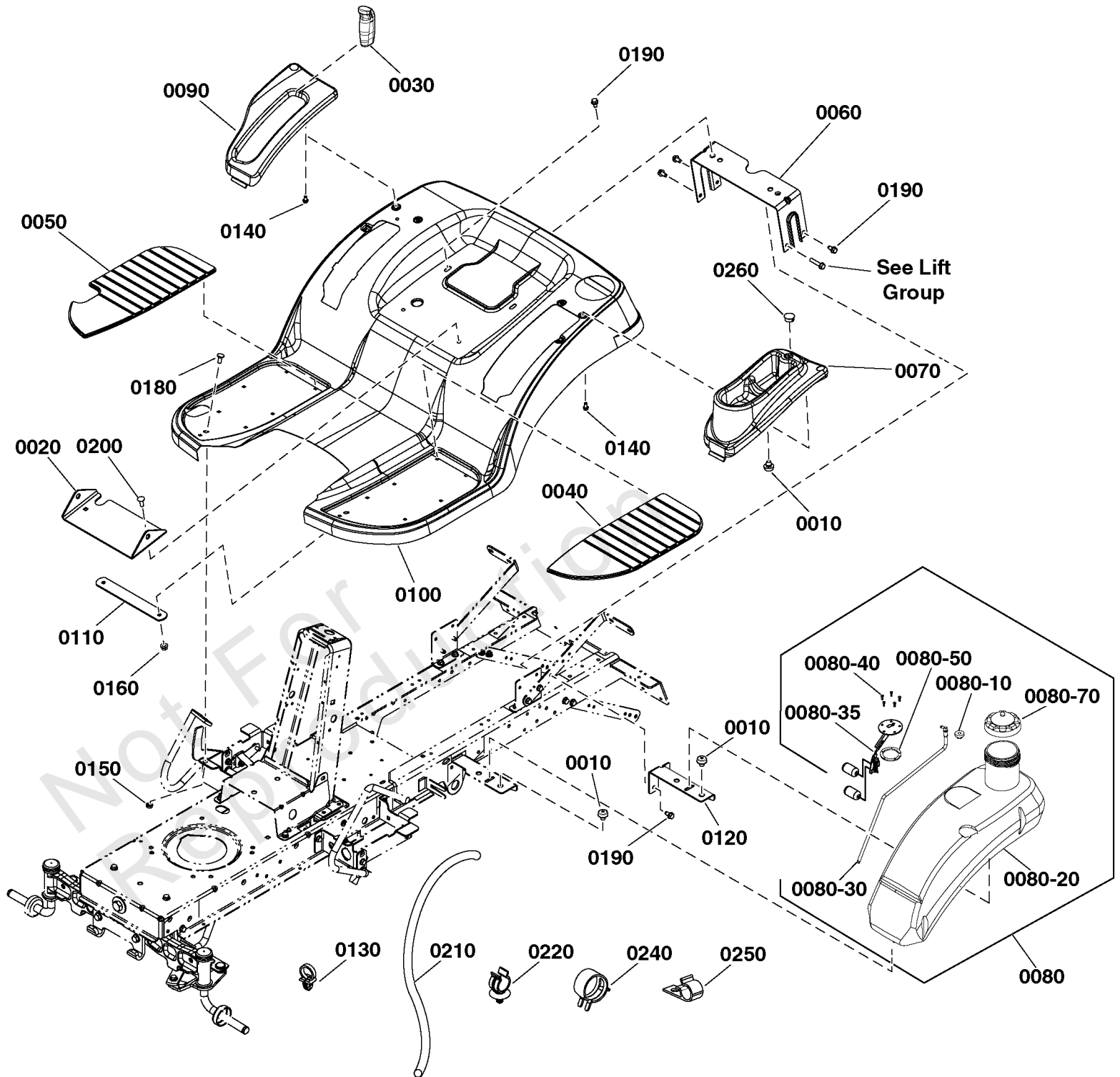
Lift Group

| REF NO | PART NO | QTY | DESCRIPTION |
|--------|-------------|-----|---|
| 0010 | 1715435SM | 1 | SPRING, Extension |
| 0020 | 885382YP | 2 | WASHER, Rubber |
| 0030 | 1727935SM | 1 | SPACER, Pivot |
| 0040 | 1727954SM | 1 | ROD, Lift .375 dia |
| 0050 | 1727955SM | 2 | ROD, Lift, Lower, 3/8 x 10 Long |
| 0060 | 1727985BMYP | 1 | QUADRANT LIFT HEIGHT |
| 0070 | 1728070SM | 1 | ROD, Lift Handle, 18-7/8" |
| 0080 | 704318 | 1 | SCREW, Hex Washer Self-Tap, 5/16-18 x 1-1/2 |
| 0090 | 1728990ASM | 1 | CLEVIS, Lift |
| 0100 | 1729652SM | 1 | SPRING, Torsion |
| 0110 | 1730264SM | 1 | DECAL, Height Of Cut |
| 0120 | 1731417BMYP | 2 | ARM, Rear Lift |
| 0130 | 1731894SM | 2 | TRUNNION |
| 0140 | 1732426SM | 4 | BOLT, Shoulder, 5/16-18 |
| 0150 | 84003052 | 1 | BRACKET, Lifting |
| 0160 | 1960044SM | 1 | WASHER, Flat, 5/16 |
| 0170 | 1960252SM | 1 | BOLT, Carriage, 1/4-20 x 5/8 |
| 0180 | 1710703SM | 1 | SPACER, 3/8 x 1/2 x 5/8 |
| 0190 | 703409 | 4 | NUT, Serrated Lock Flange, 5/16-18 |
| 0200 | 703333 | 2 | NUT, 3/8-16, Flanged Lock, GR5, Zinc/Clear |
| 0210 | 703300 | 4 | PIN, Hair, 3/32 x 1 5/8 |
| 0220 | 703590 | 2 | WASHER, .406 |
| 0230 | 703158 | 2 | NUT, Hex Flange, 3/8-16 |
| 0240 | 703161 | 1 | NUT, 1/4-20, Hex Flange Whiz Lock |
| 0250 | 704054 | 2 | PIN, Threaded Shoulder, 3/8-16 X 11/16 |
| 0260 | 703853 | 2 | WASHER, 1/2 |
| 0270 | 703570 | 1 | CAPSCREW, Hex Head, 5/16-18 x 1 1/4 |
| 0280 | 703128 | 2 | WASHER, 33/64 x .7/8 OD |
| 0290 | 771009 | 1 | PUSHNUT |
| 0300 | 1919326SM | 1 | WASHER, 5/16 |
| 0310 | 703115 | 2 | NUT, Flange Nylock, 5/16-18 |

Seat Deck & Fuel Tank Group

Note: Unless noted otherwise, use the standard torque specifications

Mfg. No: 2691509-00



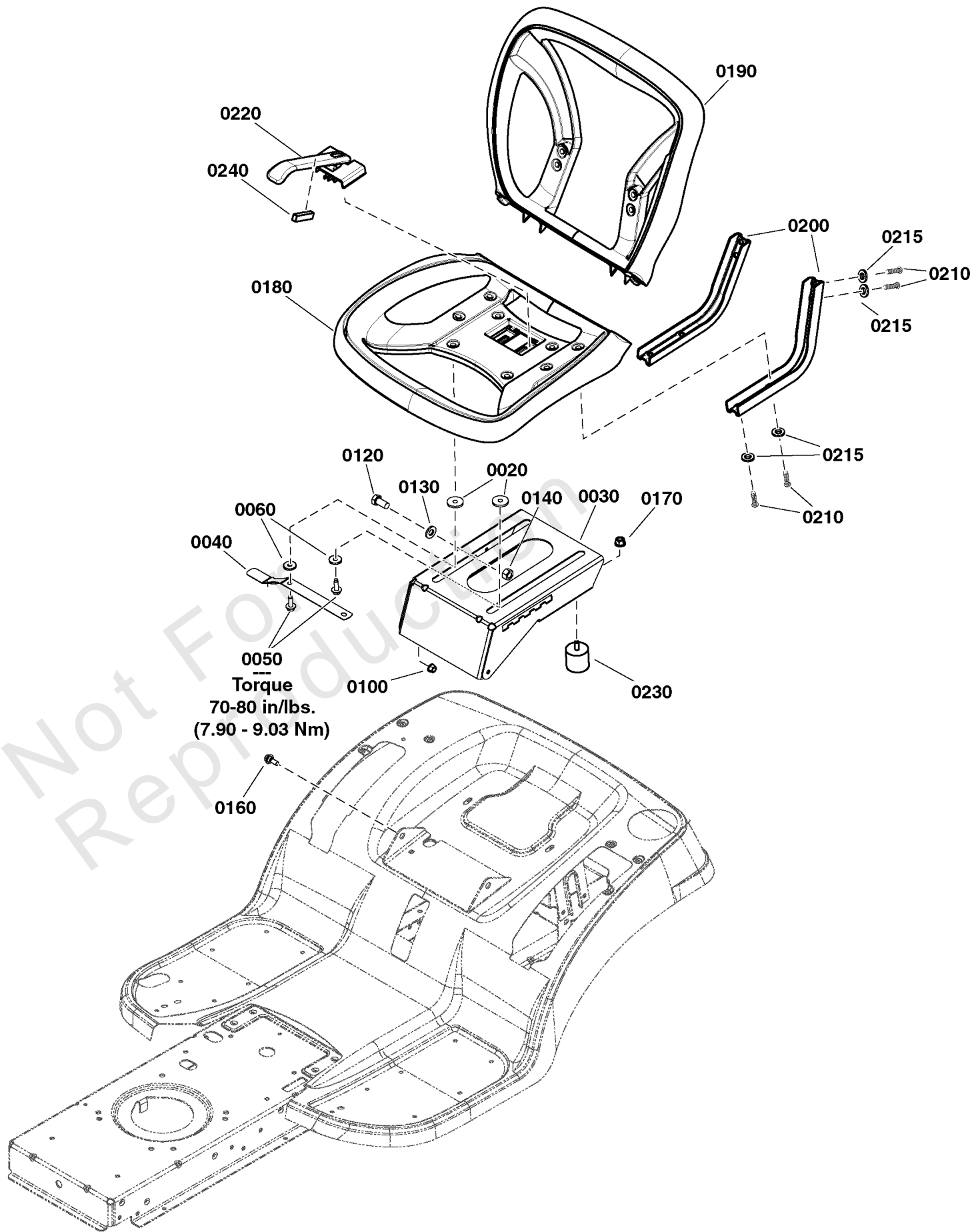
Seat Deck & Fuel Tank Group

| REF NO | PART NO | QTY | DESCRIPTION |
|---------|-------------|-----|--|
| 0010 | 197546GS | 5 | MOUNT, Vibration |
| 0020 | 1757755BMYP | 1 | SUPPORT, Seat Pivot |
| 0030 | 1722302SM | 1 | GRIP, Black |
| 0040 | 1728006SM | 1 | PAD, Footrest, L.H. |
| 0050 | 1728007SM | 1 | PAD, Footrest, R.H. |
| 0060 | 1731310SM | 1 | SUPPORT, Seat Deck |
| 0070 | 1758774YP | 1 | POD, LH |
| 0080 | 1758414YP | 1 | FUEL TANK ASSEMBLY |
| 0080-10 | 1654930SM | 1 | BUSHING, Fuel Tank |
| 0080-20 | ----- | | FUEL TANK -(Not Serviceable) |
| 0080-30 | 1758506YP | 1 | TUBE, Fuel Pickup |
| 0080-35 | 1758611YP | 1 | SENDER, Fuel |
| 0080-40 | 2860665SM | 5 | SCREW, Pan Head, Torx, 10-32 x 1/2 |
| 0080-50 | 1758898YP | 1 | PLATE, Mounting, Fuel Sender |
| 0080-70 | 5101651SM | 1 | CAP, Fuel, Vented |
| 0090 | 1739537YP | 1 | POD, R.H. |
| 0100 | 1758849CYP | 1 | SEAT DECK, Orange |
| 0110 | 1759177CJYP | 1 | BRACKET, Support, Seat Pivot |
| 0120 | 84003040 | 1 | BRACKET, Fuel Tank, Rear |
| 0130 | 1730268SM | 1 | CLIP, Hose, 1/2 Dia., Push In |
| 0140 | 1960536SM | 6 | CAPSCREW, Hex Washer Head, Plastite, 1/4 x 1/2 |
| 0150 | 703409 | 2 | NUT, Serrated Lock Flange, 5/16-18 |
| 0160 | 703115 | 2 | NUT, Flange Nylock, 5/16-18 |
| 0180 | 703185 | 2 | BOLT, Carriage, 5/16-18 X 3/4 |
| 0190 | 703949 | 7 | SCREW, Washer Head, 5/16-18 X 5/8 |
| 0200 | 704065 | 2 | BOLT, Carriage, Short Neck, 5/16-18 X 7/8 |
| 0210 | 845503 | 1 | Line-Fuel |
| 0220 | 84003041 | 3 | CLIP, Hose |
| 0240 | 791850 | 2 | CLAMP, Hose |
| 0250 | 84003042 | 1 | CLIP, Hose, Screw Mount |
| 0260 | 1732007SM | 1 | PLUG, Hole, 7/8 Dia. |

Seat Group

Note: Unless noted otherwise, use the standard torque specifications

Mfg. No: 2691509-00



Seat Group

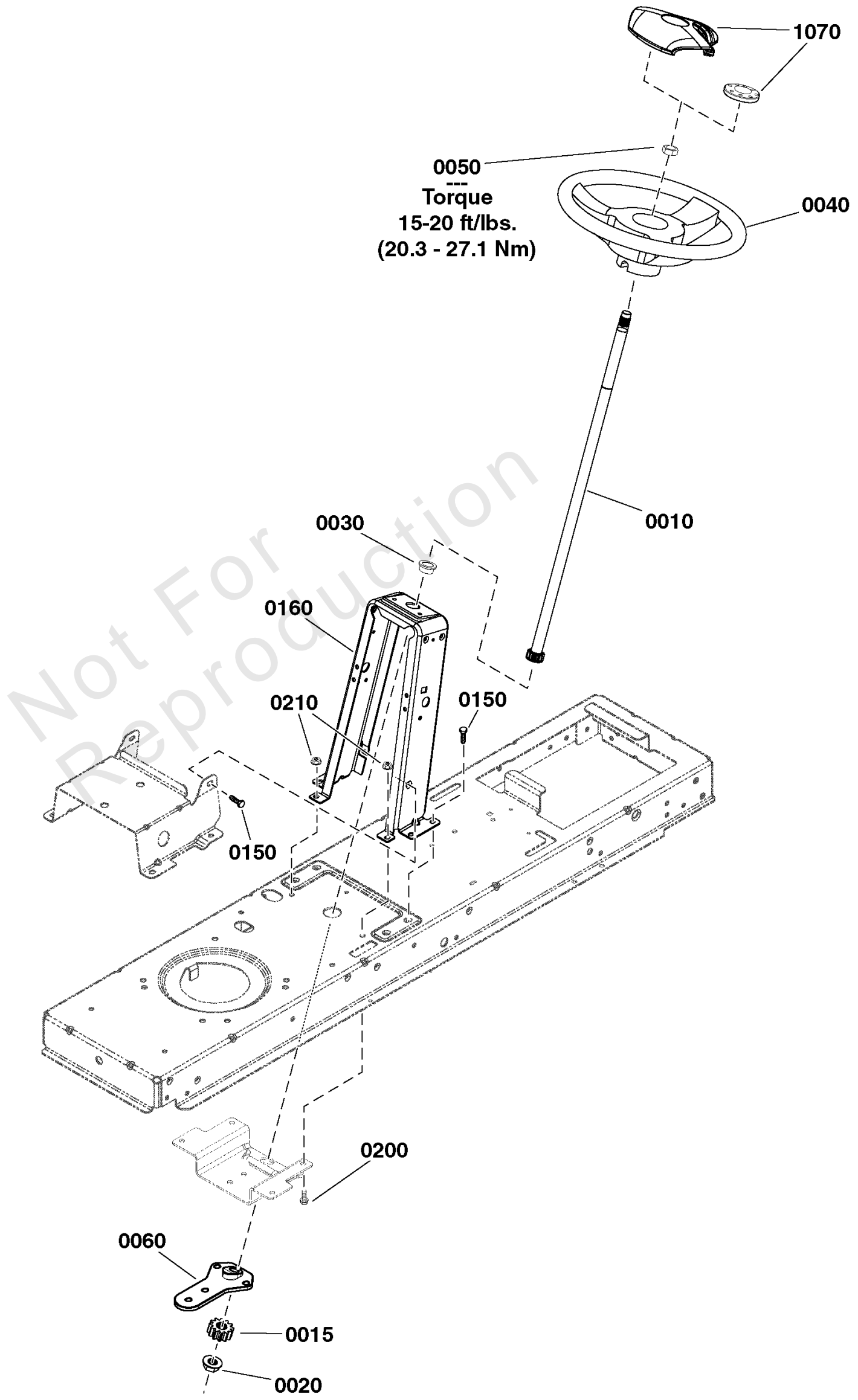
| REF NO | PART NO | QTY | DESCRIPTION |
|--------|-------------|-----|---|
| 0020 | 1731300SM | 4 | SPACER, 5/16 ID x 1-1/4 OD x 5/16" |
| 0030 | 1755767BMYP | 1 | SUPPORT, Seat |
| 0040 | 1727268BMYP | 1 | LATCH, Seat |
| 0050 | 1930595SM | 4 | CAPSCREW, Hex Head Flange Lock, 5/16-18 x 1-1/4 |
| 0060 | 703298 | 4 | WASHER, 5/16 |
| 0100 | 703115 | 2 | NUT, Flange Nylock, 5/16-18 |
| 0120 | 1923114SM | 1 | CAPSCREW, Hex Head 1/2-13 x 1, Black |
| 0130 | 703853 | 1 | WASHER, 1/2 |
| 0140 | 703340 | 1 | NUT, Hex, 1/2-13, GR5 |
| 0160 | 703851 | 2 | BOLT, Shoulder, 5/16-18 x 1 1/8 |
| 0170 | 703409 | 2 | NUT, Serrated Lock Flange, 5/16-18 |
| 0180 | 1738013YP | 1 | SEAT, Mesh Bottom |
| 0190 | 1738014YP | 1 | SEAT, Mesh Back |
| 0200 | 1737848AYP | 2 | SUPPORT, Mesh Seat, R.H. |
| 0210 | 708715 | 8 | SCREW, 5/16-18X.750 BUTTON HD PHOS&OIL |
| 0215 | 703116 | 8 | WASHER, Split Lock, .32 x .58 x .08 |
| 0220 | 1738015YP | 1 | SWITCH, Seat |
| 0230 | 5022612SM | 2 | BUMPER, Rubber, 5/16-18 |
| 0240 | 1750296YP | 1 | FOAM STRIP |

Not For
Reproduction

Steering Group

Note: Unless noted otherwise, use the standard torque specifications

Mfg. No: 2691509-00



Steering Group

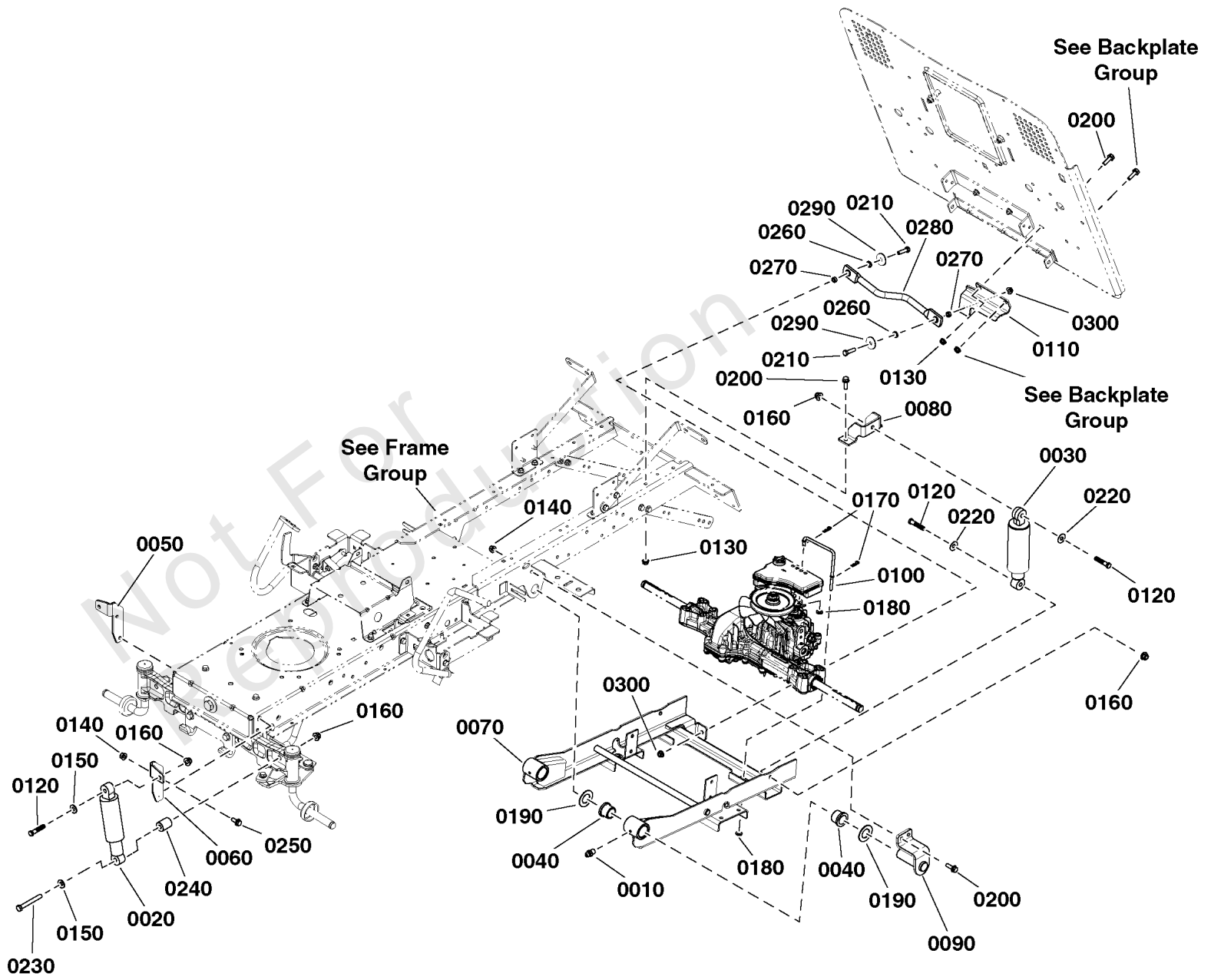
| REF NO | PART NO | QTY | DESCRIPTION |
|--------|-------------|-----|--|
| 0010 | 1761012YP | 1 | SHAFT, Steering |
| 0015 | 1761013YP | 1 | GEAR, Pinion |
| 0020 | 704067 | 1 | NUT, 5/16-18, Hex Flange, Center Lock |
| 0030 | 1729665SM | 1 | BUSHING, Steering, 3/4 ID |
| 0040 | 7078088YP | 1 | STEERING WHEEL, UV-2 |
| 0040 | 84001122 | 1 | KIT, Steering Wheel -(Incl. Ref. Nos. 1070) |
| 0050 | 1960576SM | 1 | NUT, Hex Lock, ESNA Light, 5/8-18 |
| 0060 | 1761010YP | 1 | SUPPORT, Steering |
| 0150 | 703949 | 6 | SCREW, Washer Head, 5/16-18 X 5/8 |
| 0160 | 1761498CJYP | 1 | TOWER, Steering |
| 0200 | 703354 | 4 | SCREW, Flange, Whiz-Lock, 5/16-18 X 3/4 |
| 0210 | 703409 | 4 | NUT, Serrated Lock Flange, 5/16-18 |
| 1070 | 1725024 | 1 | CAP, Steering Wheel, Plain |
| 1070 | REF-DECALS | 1 | Refer to: Decals Group |

Not For
Reproduction

Suspension Group

Note: Unless noted otherwise, use the standard torque specifications

Mfg. No: 2691509-00



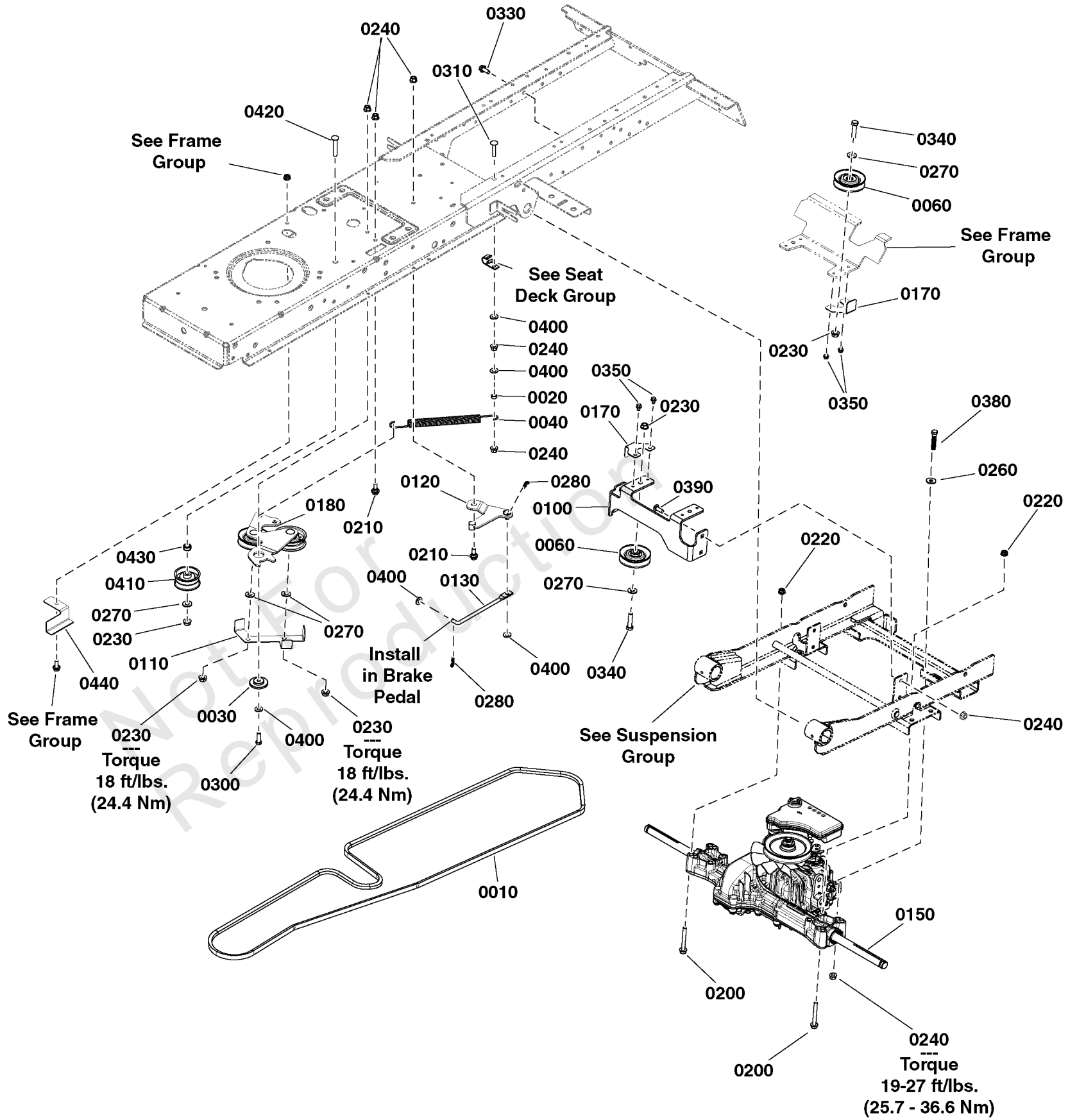
Suspension Group

| REF NO | PART NO | QTY | DESCRIPTION |
|--------|-----------|-----|---|
| 0010 | 1704314SM | 2 | FITTING, Lube, 1/4 |
| 0020 | 1755279YP | 2 | SHOCK ABSORBER |
| 0030 | 1758705YP | 2 | **SHOCK ABSORBER, 10 1/2" |
| 0040 | 1758717YP | 4 | BUSHING, Flange, 1 x 1 |
| 0050 | 84003004 | 1 | BRACKET, Right Side |
| 0060 | 84003005 | 1 | BRACKET, Left Side |
| 0070 | 84003111 | 1 | CARRIER |
| 0080 | 84003112 | 2 | BRACKET, Rear Shocks |
| 0090 | 84003113 | 2 | PIVOT |
| 0100 | 84003114 | 1 | ROD |
| 0110 | 84003115 | 1 | BRACKET |
| 0120 | 704289 | 6 | CAPSCREW, Hex Head, 3/8-16 X 1 3/4 |
| 0130 | 703409 | 5 | NUT, Serrated Lock Flange, 5/16-18 |
| 0140 | 703115 | 6 | NUT, Flange Nylock, 5/16-18 |
| 0150 | 703878 | 4 | WASHER, Flat, 13/32 x 7/8 x .083 |
| 0160 | 703158 | 8 | NUT, Hex Flange, 3/8-16 |
| 0170 | 703430 | 2 | PIN, 13X1.19 |
| 0180 | 703332 | 2 | WASHER, Flat, 1/4 |
| 0190 | 703199 | 4 | WASHER, Flat |
| 0200 | 703410 | 9 | BOLT, Serrated Flange, 5/16-18 X 1.0 |
| 0210 | 84003116 | 2 | CAPSCREW, Hex Head, 5/16-18 X 1.25 |
| 0220 | 703966 | 4 | WASHER, Flat |
| 0230 | 1923903SM | 2 | CAPSCREW, Hex Head, 3/8-16 x 3, Black |
| 0240 | 5103427YP | 2 | SPACER, .39 ID x 1 OD x 1-1/4" |
| 0250 | 703354 | 2 | SCREW, Flange, Whiz-Lock, 5/16-18 X 3/4 |
| 0260 | 704015 | 2 | WASHER, Flat, 5/16 |
| 0270 | 5102463YP | 2 | SPACER, .33 X .50 X .25, PM, CZ |
| 0280 | 84003006 | 1 | BAR |
| 0290 | 1960044SM | 2 | WASHER, Flat, 5/16 |
| 0300 | 704067 | 1 | NUT, 5/16-18, Hex Flange, Center Lock |

Transmission Group - Tuff Torq K46EC

Note: Unless noted otherwise, use the standard torque specifications

Mfg. No: 2691509-00



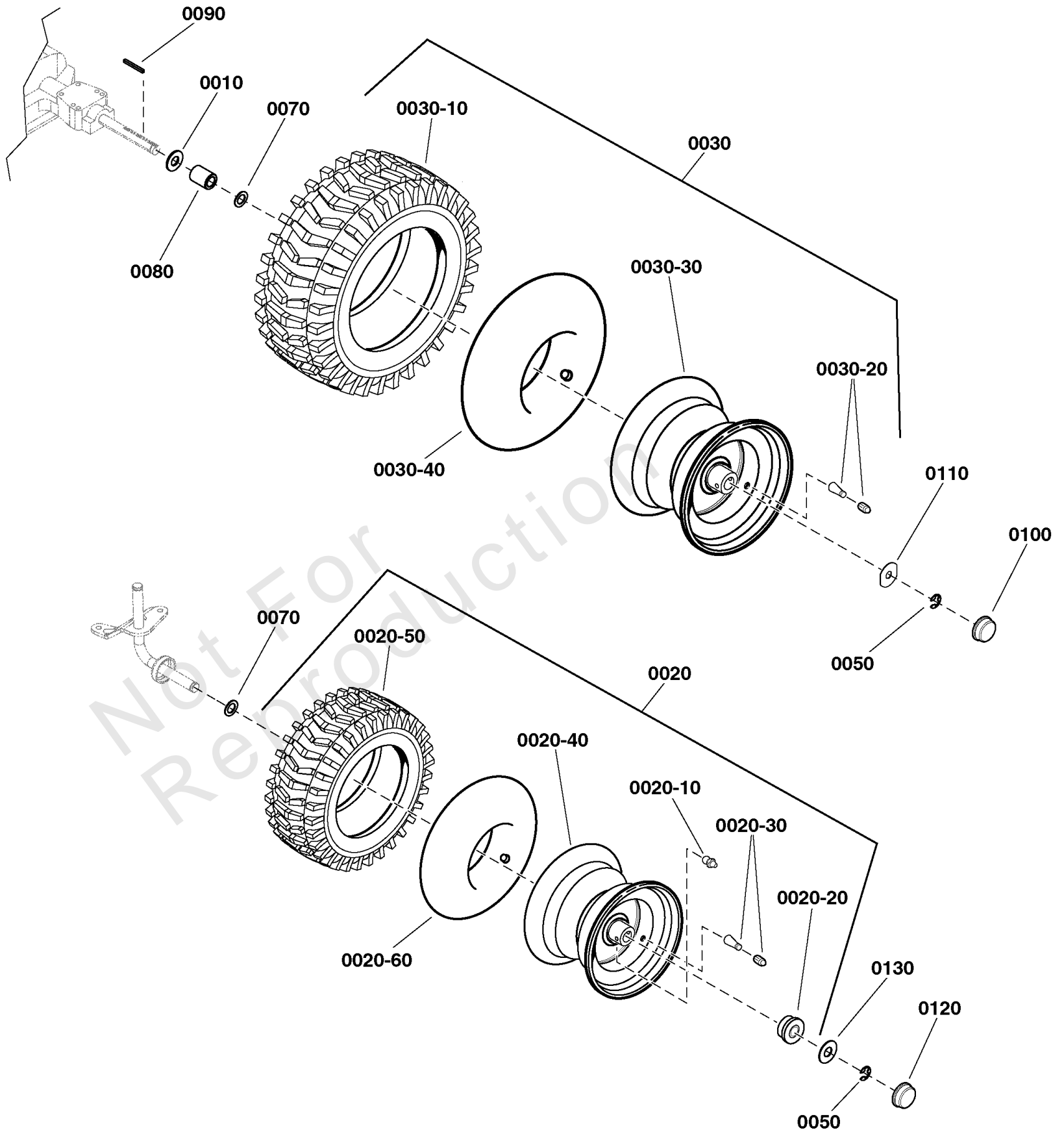
Transmission Group - Tuff Torq K46EC

| REF NO | PART NO | QTY | DESCRIPTION |
|--------|-----------|-----|--|
| 0010 | 84001118 | 1 | BELT, RDLT, 115.1 |
| 0020 | 5102463YP | 1 | SPACER, .33 X .50 X .25, PM, CZ |
| 0030 | 1727935SM | 1 | SPACER, Pivot |
| 0040 | 84002611 | 1 | SPRING, Extension |
| 0060 | 1760012YP | 4 | PULLEY, Idler |
| 0100 | 84002636 | 1 | BRACKET, Transmission Pulley |
| 0110 | 84002637 | 1 | BRACKET, Belt Guide |
| 0120 | 84002638 | 1 | CLUTCH PIVOT ASSEMBLY |
| 0130 | 84002639 | 1 | CLUTCH ROD |
| 0150 | 84002640 | 1 | TRANSMISSION, Tuff Torq K46EC |
| 0170 | 84002645 | 4 | BELT GUIDE |
| 0180 | 84002647 | 1 | IDLER ASSEMBLY |
| 0200 | 1960586SM | 8 | CAPSCREW, Hex Flange, Whiz Lock, 5/16-18 x 2-1/2 |
| 0210 | 703851 | 2 | BOLT, Shoulder, 5/16-18 x 1 1/8 |
| 0220 | 703409 | 8 | NUT, Serrated Lock Flange, 5/16-18 |
| 0230 | 703333 | 7 | NUT, 3/8-16, Flanged Lock, GR5, Zinc/Clear |
| 0240 | 703115 | 10 | NUT, Flange Nylock, 5/16-18 |
| 0260 | 703118 | 1 | WASHER, Flat, 7/8, GR5 |
| 0270 | 703878 | 7 | WASHER, Flat, 13/32 x 7/8 x .083 |
| 0280 | 703430 | 3 | PIN, 13X1.19 |
| 0300 | 703585 | 1 | CAPSCREW, Hex Head, 5/16-18 x 1 |
| 0310 | 703296 | 1 | BOLT, Carriage, 5/16-18 x 1 1/2 |
| 0330 | 703354 | 6 | SCREW, Flange, Whiz-Lock, 5/16-18 X 3/4 |
| 0340 | 703406 | 4 | CAPSCREW, Hex Head, 3/8-16 X 1 1/2, GR5 |
| 0350 | 703583 | 8 | SCREW, Taptite, 1/4 - 20 x 3/8 |
| 0380 | 704288 | 1 | CAPSCREW, Hex Head, 5/16-18 x 1 3/4 |
| 0390 | 704065 | 4 | BOLT, Carriage, Short Neck, 5/16-18 X 7/8 |
| 0400 | 1919326SM | 5 | WASHER, 5/16 |
| 0410 | 1668477SM | 1 | PULLEY, Idler, 2.25" OD, .378 ID |
| 0420 | 1960315SM | 1 | CARRIAGE BOLT, 3/8-16 x 2 (30" Mulcher) |
| 0430 | 5044933SM | 1 | SPACER, .39 X .75 X .38, PM, CZ |
| 0440 | 84002648 | 1 | GUIDE, Belt, Black |

Wheels & Tires

Note: Unless noted otherwise, use the standard torque specifications

Mfg. No: 2691509-00



Wheels & Tires

| REF NO | PART NO | QTY | DESCRIPTION |
|---------|-----------|-----|--|
| 0010 | 2860202SM | 2 | WASHER, 3/4 x 1-5/8 OD x 1/8 Thick |
| 0020 | 1761503YP | 2 | WHEEL AND TIRE ASSEMBLY, Front, 15 x 6-6 |
| 0020-10 | 2812808SM | 1 | FITTING, Lube, 1/4 |
| 0020-20 | 1713167SM | 1 | BEARING |
| 0020-30 | 2172353SM | 1 | VALVE STEM & CAP |
| 0020-40 | ----- | 1 | WHEEL, Front, 6" -(Refer to Note: *) |
| 0020-50 | 7101556YP | 1 | TIRE, 15 x 6 2 Ply K358 |
| 0020-60 | 1664090SM | 1 | TUBE, Tire, Front |
| 0030 | 7101569YP | 2 | WHEEL & TIRE ASSEMBLY, 22 X 9.5-12 |
| 0030-10 | 7101568YP | 1 | TIRE, 22 x 9.50-12, 2 Ply K358 |
| 0030-20 | 2172353SM | 1 | VALVE STEM & CAP |
| 0030-30 | ----- | 1 | RIM, 12x x7 Int W/3 5 Lg Hub Silver -(Refer to Note: *) |
| 0030-40 | 2173477SM | 1 | TUBE |
| 0050 | 2827794SM | 4 | RING, Klipring EXT For .75 Dia Shaft blk |
| 0070 | 1960528SM | 4 | WASHER, 49/64" I.D. x 1-1/4" O.D. |
| 0080 | 84002985 | 2 | SPACER, 0.77 ID x 1-1/4 OD x 2.44 |
| 0090 | 021553MA | 1 | KEY, Square, 3/16 |
| 0100 | 1722676SM | 2 | HUB CAP |
| 0110 | 1722717SM | 2 | WASHER, 2-1/2 |
| 0120 | 1722675SM | 2 | CAP, Hub, 1-1/2 ID Gray Poly 1.3 HI |
| 0130 | 1960160SM | 2 | WASHER, 0.750 ID x 1.60 OD x .05 Thick |

Not For Reproduction

Footnotes:

Note* Not a serviceable part, service wheel complete

Hardware Identification & Torque Specifications

| Torque Specification Chart | | | | | | | | |
|--|-----------|------|-----------|------|------------|------|------------|------|
| FOR STANDARD METRIC MACHINE HARDWARE (Tolerance ± 20%) | | | | | | | | |
| Property Class | 5.6 | | 8.8 | | 10.9 | | 12.9 | |
| | Class 5.6 | | Class 8.8 | | Class 10.9 | | Class 12.9 | |
| Size Of Hardware | in/lbs | Nm. | in/lbs | Nm. | in/lbs | Nm. | in/lbs | Nm. |
| | ft/lbs | | ft/lbs | | ft/lbs | | ft/lbs | |
| M3 | 5.88 | .56 | 13.44 | 1.28 | 19.2 | 1.80 | 22.92 | 2.15 |
| M4 | 13.44 | 1.28 | 30.72 | 2.90 | 43.44 | 4.10 | 52.56 | 4.95 |
| M5 | 26.4 | 2.50 | 60.96 | 5.75 | 5.97 | 8.10 | 7.15 | 9.7 |
| M6 | 44.64 | 4.3 | 7.3 | 9.9 | 10.3 | 14 | 12.1 | 16.5 |
| M7 | 5.2 | 7.1 | 12.1 | 16.5 | 16.9 | 23 | 19.9 | 27 |
| M8 | 7.7 | 10.5 | 17.7 | 24 | 25 | 34 | 29 | 40 |
| M10 | 15 | 21 | 35 | 48 | 50 | 67 | 59 | 81 |
| M12 | 26 | 36 | 61 | 83 | 86.2 | 117 | 103 | 140 |
| M14 | 42 | 58 | 101 | 132 | 136 | 185 | 162 | 220 |
| M16 | 64 | 88 | 147 | 200 | 210 | 285 | 250 | 340 |
| M18 | 89 | 121 | 202 | 275 | 287 | 390 | 346 | 470 |
| M20 | 126 | 171 | 290 | 390 | 405 | 550 | 486 | 660 |
| M22 | 169 | 230 | 390 | 530 | 559 | 745 | 656 | 890 |
| M24 | 217 | 295 | 497 | 375 | 708 | 960 | 840 | 1140 |
| M27 | 320 | 435 | 733 | 995 | 1032 | 1400 | 1239 | 1680 |
| M30 | 435 | 590 | 995 | 1350 | 1401 | 1900 | 1681 | 2280 |
| M33 | 590 | 800 | 1349 | 1830 | 1902 | 2580 | 2278 | 3090 |
| M36 | 759 | 1030 | 1740 | 2360 | 2441 | 3310 | 2935 | 3980 |
| M39 | 988 | 1340 | 2249 | 3050 | 3163 | 4290 | 3798 | 5150 |

| Torque Specification Chart | | | | | | |
|---|-------------|-------|-------------|-------|-------------|---------|
| FOR STANDARD MACHINE HARDWARE (Tolerance ± 20%) | | | | | | |
| Hardware Grade | No Marks | | SAE Grade 5 | | SAE Grade 8 | |
| | SAE Grade 2 | | SAE Grade 5 | | SAE Grade 8 | |
| Size Of Hardware | in/lbs | Nm. | in/lbs | Nm. | in/lbs | Nm. |
| | ft/lbs | | ft/lbs | | ft/lbs | |
| 8-32 | 19 | 2.1 | 30 | 3.4 | 41 | 4.6 |
| 8-36 | 20 | 2.3 | 31 | 3.5 | 43 | 4.9 |
| 10-24 | 27 | 3.1 | 43 | 4.9 | 60 | 6.8 |
| 10-32 | 31 | 3.5 | 49 | 5.5 | 68 | 7.7 |
| 1/4-20 | 66 | 7.6 | 8 | 10.9 | 12 | 16.3 |
| 1/4-28 | 76 | 8.6 | 10 | 13.6 | 14 | 19.0 |
| 5/16-18 | 11 | 15.0 | 17 | 23.1 | 25 | 34.0 |
| 5/16-24 | 12 | 16.3 | 19 | 25.8 | 29 | 34.0 |
| 3/8-16 | 20 | 27.2 | 30 | 40.8 | 45 | 61.2 |
| 3/8-24 | 23 | 31.3 | 35 | 47.6 | 50 | 68.0 |
| 7/16-14 | 30 | 40.8 | 50 | 68.0 | 70 | 95.2 |
| 7/16-20 | 35 | 47.6 | 55 | 74.8 | 80 | 108.8 |
| 1/2-13 | 50 | 68.0 | 75 | 102.0 | 110 | 149.6 |
| 1/2-20 | 55 | 74.8 | 90 | 122.4 | 120 | 163.2 |
| 9/16-12 | 65 | 88.4 | 110 | 149.6 | 150 | 204.0 |
| 9/16-18 | 75 | 102.0 | 120 | 163.2 | 170 | 231.2 |
| 5/8-11 | 90 | 122.4 | 150 | 204.0 | 220 | 299.2 |
| 5/8-18 | 100 | 136 | 180 | 244.8 | 240 | 326.4 |
| 3/4-10 | 160 | 217.6 | 260 | 353.6 | 386 | 525.0 |
| 3/4-16 | 180 | 244.8 | 300 | 408.0 | 420 | 571.2 |
| 7/8-9 | 140 | 190.4 | 400 | 544.0 | 600 | 816.0 |
| 7/8-14 | 155 | 210.8 | 440 | 598.4 | 660 | 897.6 |
| 1-8 | 220 | 299.2 | 580 | 788.8 | 900 | 1,244.0 |
| 1-12 | 240 | 326.4 | 640 | 870.4 | 1,000 | 1,360.0 |

The guides and ruler furnished below are designed to help you select the appropriate hardware.

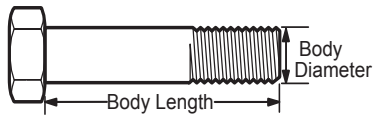


Nut, M8

Thread Diameter (mm)

Inside Diameter (in) Threads per inch

Nut, 1/2-16



Screw, M8- 1.25 x 25

Thread Diameter (mm) Distance between threads (mm) Body Length (mm)

Body Diameter Threads per inch Body Length (in)

Screw, 1/2- 16 x 2



Standard Hardware Sizing

When a washer or nut is identified as 1/2" (M8), this is the *Nominal size*, meaning the *inside diameter* is 1/2 inch (8mm metric thread diameter); if a second number is present it represents the *threads per inch* (distance between threads).

When bolt or capscrew is identified as 1/2 - 16 x 2" (M8 - 1.25 x 50), this means the *Nominal size*, or body diameter is 1/2 inch (8mm metric thread diameter), the second number, 16, represents the *threads per inch*, (*distance between threads*). The final number is the body length of the bolt or screw, 2 inches (50mm).

NOTES

- These torque values are to be used for all hardware excluding: locknuts, self-tapping screws, thread forming screws, sheet metal screws and socket head setscrews.
- Recommended seating torque values for locknuts:
 - for prevailing torque locknuts - use 65% of grade 5 torques.
 - for flange whizlock nuts and screws - use 135% of grade 5 torques.
- Unless otherwise noted on assembly drawings, all torque values must meet this specification.

Common Hardware Types

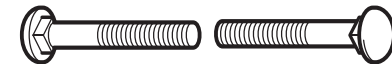
Hex Head Capscrew



Washer



Carriage Bolt



Hex Nut

Wrench & Fastener Size Guide

| | | | | |
|----------------------------------|----------------------------------|----------------------------------|--|---------------------------------|
| | | | | |
| 1/4" Bolt or Nut Wrench—7/16" | 5/16" Bolt or Nut Wrench—1/2" | 3/8" Bolt or Nut Wrench—9/16" | 7/16" Bolt or Nut Wrench (Bolt)—5/8" Wrench (Nut)—11/16" | 1/2" Bolt or Nut Wrench—3/4" |
| M6 Bolt or Nut Wrench—10mm | M8 Bolt or Nut Wrench—13mm | M10 Bolt or Nut Wrench—17mm | M12 Bolt or Nut Wrench—19mm | M14 Bolt or Nut Wrench—22mm |

