



Parts Manual



Courier

Series Zero Turns & Mower Decks

Products

Mfg. No.	Description
2691357-00	Courier, SZT150, 656cc B&S Rider w/46" (117cm) Mower Deck CE/Export
2691359-00	Courier, SZT250, 724cc B&S Rider w/48" (122cm) Mower Deck CE/Export

Manual Part No. 1760493
Revision B
Rev. Date: 10/12/2016

Not for
Reproduction

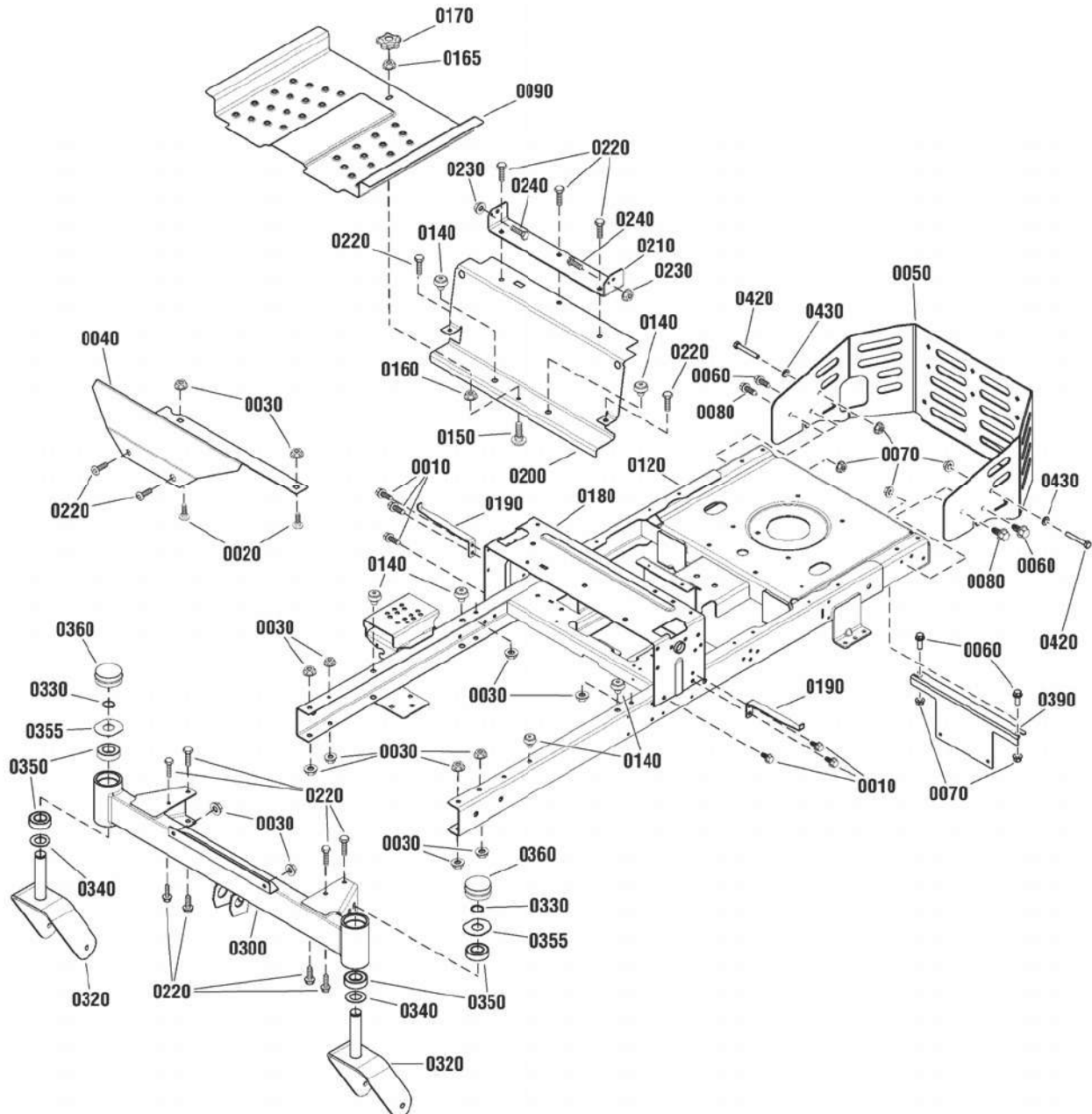
PRODUCT COMPONENTS	PAGES
Frame Group	4
Frame Group	6
Engine Group	10
Transmission Group	12
Transmission Group	14
Controls Group	16
Electrical Group	18
Electrical Group	20
Body, Fuel Tank & EVAP Group	22
Seat Group W/Armrests	24
Parking Brake Group	26
Rear Suspension Group	28
Lift Group	30
Wheel & Tire Group	32
Decals Group	34
46" HOZ Guarding Group	36
48" HOZ, Guarding Group, Susp	38
Cargo Box Group - ZT - No Cargo Bed	40
46" Mower Deck - Clutch & Support Group	42
46" Mower Deck - Housing, Arbor & Blade Group	44
48" (122cm) & 52" (132cm) Mower Deck - Roller Group	46
48" (122cm) Mower Deck - Clutch & Support Group	48
48" Mower Deck - Housing, Arbors & Blade Group, ZT - EU	50
Torque Specification Chart	Inside Back Cover

Not for
Reproduction

Frame Group

NOTE: Unless noted otherwise,
use the standard hardware torque
specification chart.

2992081



The above parts group applies to the following Mfg. Nos.:

2691357-00 - Courier

Frame Group

REF NO	PART NO.	QTY.	DESCRIPTION
0010	703949	6	SCREW, 5/16-18 X .625, Hex Washer Head, Thread Roll, Zinc/Clear
0020	703448	2	BOLT, 3/8-16 X .750, Short Neck Carriage, Zinc/Clear
0030	5025394SM	17	NUT, 3/8-16, Hex Flange Nylock
0040	1758894CYP	1	FOOTREST, Fixed Axle (Orange)
0050	1759970CYP	1	BUMPER, Rear (Orange)
0060	703410	4	BOLT, 5/16-18 X 1.0, Serrated Flange, GR5, Zinc/Clear
0070	703115	6	NUT, 5/16-18, Flange Nylock, GR F, Zinc/Clear
0080	703228	2	SCREW, 16-18X0.750, Hex Washer Head Tap-Tite T5
0090	1757813CYP	1	PAN, Bottom Foot (Orange)
0120	****	1	WELDMENT, ZT FRAME - FIXED AXLE (Orange) (Not a Part Sale Item)
0140	197546GS	6	MOUNT, Rubber Vibration for .5" Hole
0150	7090496YP	1	BOLT, Carriage 1/4C X1 GR5 ZP
0160	703233	1	NUT, 1/4-20 Hex Flange Lock, GR 5, Zinc/Clear
0165	15X143MA	1	NUT, 1/4-20, Hex Flange Center Lock, ZC/CL
0170	707785	1	KNOB, Handle, 5 Prong, 1/4-20
0180	1758010CYP	1	BRACKET, Control (Orange)
0190	1758240AYP	2	BRACKET, Fender Support
0200	1757796CYP	1	BRACKET, Brand Plate (Orange)
0210	1758835CYP	1	BRACKET, Seat Pivot (Orange)
0220	707790	15	SCREW, 3/8-16 X .88 Button HD Hex Socket
0230	5025339YP	2	NUT, #8-32 Nylock
0240	770013	2	SCREW, 8-32 X .50 LG, Hex Head Cap
0300	1757819C	1	WELDMENT, Front Axle - Fixed (Orange)
0320	1757845CYP	2	WELDMENT, Front Caster (Orange)
0330	703993	2	RETAINING RING, 1" External
0340	703199	2	WASHER, 1.017 ID X 1.812 OD X .6 Thk, Flat, ZC/CL
0350	1758354YP	4	BEARING, Ball, 25MM ID, 52MM OD, 15MM Thick
0355	1722726SM	2	WASHER, Hub Cap, 1 X 2.5
0360	1725651SM	2	COVER, Spindle (Black Poly)
0390	1759969CYP	1	GUARD, Transmission (Orange)
0420	5025055X18SM	2	BOLT, 5/16-18 X 2-1/4 GD5 TFL, ZN
0430	703302	2	WASHER, 5/16 SAE

Footnotes

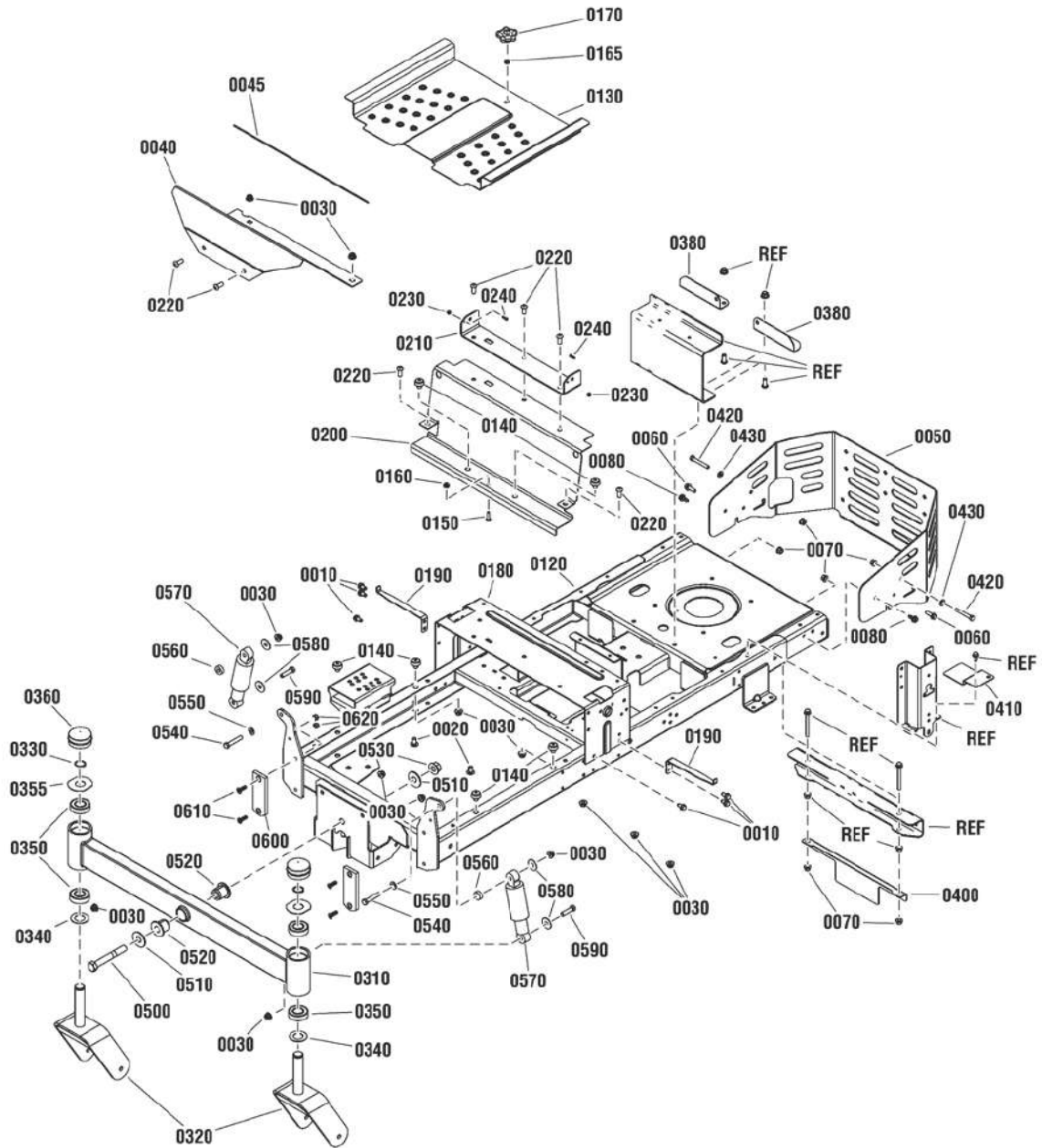
The above parts group applies to the following Mfg. Nos.:

2691357-00 - Courier

Frame Group

NOTE: Unless noted otherwise,
use the standard hardware torque
specification chart.

2992181



The above parts group applies to the following Mfg. Nos.:

2691359-00 - Courier

Frame Group

REF NO	PART NO.	QTY.	DESCRIPTION
0010	703949	6	SCREW, 5/16-18 X .625, Hex Washer Head, Thread Roll, Zinc/Clear
0020	703448	2	BOLT, 3/8-16 X .750, Short Neck Carriage, Zinc/Clear
0030	5025394SM	13	NUT, 3/8-16, Hex Flange Nylock
0040	1759278CYP	1	FOOTREST, Pivoting Axle (Orange)
0045	5101374YP	1	SAFETY WALK, Floor Rest, 6.00 X 16.00
0050	1759970CYP	1	BUMPER, Rear (Orange)
0060	703410	2	BOLT, 5/16-18 X 1.0, Serrated Flange, GR5, Zinc/Clear
0070	703115	6	NUT, 5/16-18, Flange Nylock, GR F, Zinc/Clear
0080	703228	2	SCREW, 16-18X0.750, Hex Washer Head Tap-Tite T5
0120	****	1	WELDMENT, ZT Frame - Full Suspension (Orange) (Not a Part Sale Item)
0130	1757813CYP	2	PAN, Bottom Foot (Orange)
0140	197546GS	6	MOUNT, Rubber Vibration for .5" Hole
0150	7090496YP	1	BOLT, Carriage 1/4C X1 GR5 ZP
0160	703233	1	NUT, 1/4-20 Hex Flange Lock, GR 5, Zinc/Clear
0165	15X143MA	1	NUT, 1/4-20, Hex Flange Center Lock, ZC/CL
0170	707785	1	KNOB, Handle, 5 Prong, 1/4-20
0180	1758010CYP	1	BRACKET, Control (Orange)
0190	1758240AYP	2	BRACKET, Fender Support (Black)
0200	1757796CYP	1	BRACKET, Brand Plate (Orange)
0210	1758835CYP	1	BRACKET, Seat Pivot (Orange)
0220	707790	7	SCREW, 3/8-16 X .88 Button HD Hex Socket
0230	5025339YP	2	NUT, #8-32 Nylock
0240	770013	2	SCREW, 8-32 X .50 LG, Hex Head Cap
0310	1758686CYP	1	WELDMENT, Front Axle - Pivoting (Orange)
0320	1759815CYP	2	WELDMENT, Caster Yoke (Pivoting Axle)(Orange)
0330	703993	2	RETAINING RING, 1" External
0340	703199	2	WASHER, 1.017 ID X 1.812 OD X .6 Thk, Flat, ZC/CL
0350	1758354YP	4	BEARING, Ball, 25MM ID, 52MM OD, 15MM Thick
0355	1722726SM	2	WASHER, Hub Cap, 1 X 2.5
0360	1725651SM	2	COVER, Spindle (Black Poly)
0380	1760066AYP	2	GUARD, Tank (Black)
0400	1760067CYP	1	GUARD, Transmission, Suspension (Orange)
0410	1760068CYP	2	GUARD, Frame (Orange)
0420	5025055X18YP	2	BOLT, 5/16-18 X 2-1/4, GD 5, TFL, ZN
0430	703302	2	WASHER, 5/16 SAE
0500	707789	1	BOLT, 5/8-11 x 4.50, GD 5, Hex HD
0510	1960035SM	2	WASHER, 5/8 (.64 ID X 1.75 OD X .11 Thick) Flat, Black
0520	1759234YP	2	BUSHING, 1.235 OD, .641 ID, 1.29 LG, 1.75 Flange, PM
0530	2860646SM	1	NUT, 5/8-11, Hex Flange Two Way Lock, Yellow
0540	703589	2	SCREW, 3/8-16 x 2, Hex Head Cap, GR5, Zinc/Clear
0550	703590	2	WASHER, 3/8 (.406 X .816 X .65), Flat, Zinc/Clear
0560	1667811SM	2	SPACER, .390 ID, .90 OD, .34 LG, PM, YEL
0570	1755279YP	2	SHOCK ABSORBER, 8" Length
0580	5025165SM	4	WASHER, 3/8 (.41 ID, 1.25 OD, .06 Thk) Fender

Footnotes

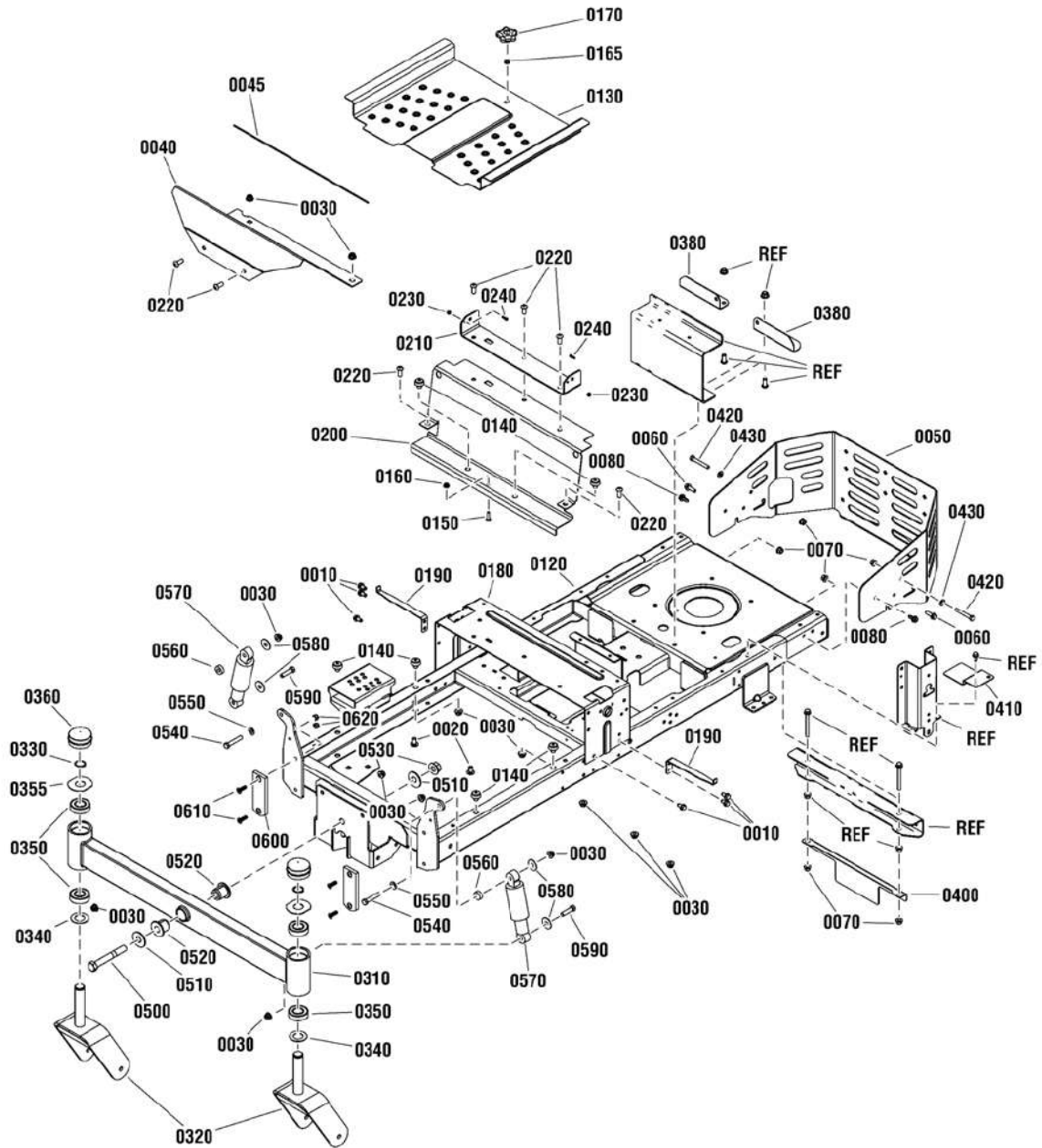
The above parts group applies to the following Mfg. Nos.:

2691359-00 - Courier

Frame Group

NOTE: Unless noted otherwise,
use the standard hardware torque
specification chart.

2992181



The above parts group applies to the following Mfg. Nos.:

2691359-00 - Courier

Frame Group

REF NO	PART NO.	QTY.	DESCRIPTION
0590	703406	2	SCREW, 3/8-16 X 1.50, Hex HD Cap, GR5, Zinc/Clear
0600	1759391YP	2	PAD, Friction, 1.75 X 5.03
0610	5025594YP	4	SCREW, 5/16-18X1, Phillips HD, BZ
0620	703902	4	NUT, 5/16-18, Hex Nylon Lock

Not for
Reproduction

Footnotes

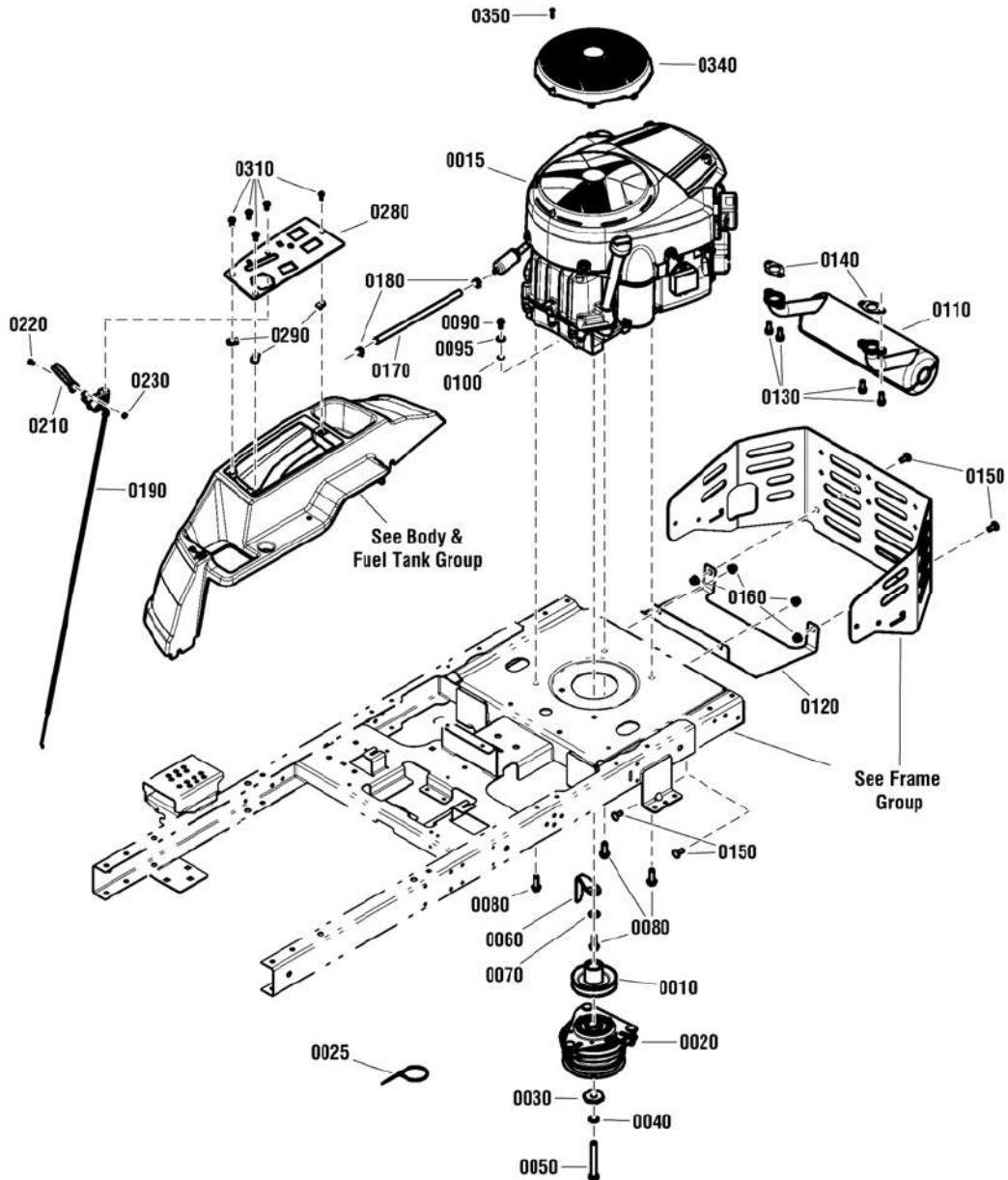
The above parts group applies to the following Mfg. Nos.:

2691359-00 - Courier

Engine Group

NOTE: Unless noted otherwise,
use the standard hardware torque
specification chart.

2992079_2992080



The above parts group applies to the following Mfg. Nos.:

2691357-00 - Courier
2691359-00 - Courier

Engine Group

REF NO	PART NO.	QTY.	DESCRIPTION
0010	1757995YP	1	PULLEY, 3.87 OD, 1" ID Keyed, 2.375 Tall, Engine, ZT
0015	40N877-0028-B1	1	* ENGINE, B&S 7220 Series, Twin Intek, EXP, Mod. 40N877-0028-B1 Mod. 2691357-00
0015	44S677-0030-B1	1	* ENGINE, B&S 8240 Series Twin PRO, EXP, 44S677-0030-B1 Mod. 2691358-00
0015	44S877-0045-B1	1	* ENGINE, B&S 8270 Series Twin PRO, EXP, 44S877-0045-B1 Mod. 2691359-00
0020	1736105SM	1	CLUTCH, Ogura Electric, 1" ID - 87 ft lbs
0025	703586	1	TIE, 7, Self Locking
0030	1708264SM	1	WASHER, Hex, .453 ID X 1.500 A/F, .250TH
0040	704007	1	WASHER, 7/16, Split-Lock, Zinc/Clear
0050	1960649SM	1	SCREW, 7/16-20 X 3.5, Hex Head, G5 BLK
0060	1737421AYP	1	GUIDE, Belt, Long
0070	80003621	1	WSHR, .406X.875X.083FLT,TYPE A,ZINC/CLEAR
0080	2828635SM	4	SCREW, 3/8-16X1.25, Hex Washer Head Tap-Tite, Yel
0090	703054	1	BOLT, 3/8-16 X .88, .513 Dia. Shoulder, GR2, Zinc/Clear
0095	703332	1	WASHER, 1/4, Flat, GR5 Zinc/Clear
0100	1921880SM	1	LOCKWASHER, .25, External Tooth
0110	1758350YP	1	MUFFLER, ZT (B&S M40/44)
0120	1759502AYP	1	SHIELD, Heat (Black)
0130	690341	4	SCREW, 5/16-18X0.875, Hex Lock Washer
0140	690970	2	GASKET, Exhaust
0150	703185	4	BOLT, 5/16-18X3/4 GR5, Carriage, YZ
0160	703115	4	NUT, 5/16-18, Flange Nylock, GR F, Zinc/Clear
0170	791766	1	HOSE, 1/4" X 11.25", Fuel
0180	791850	2	CLAMP, .490 ID, .312 Wide, Fuel Hose, Band Type, Green
0190	1759204YP	1	CONTROL, Throttle, 40" (Part # Stamped on Cable) Mod. 2691357-00
0190	1759205YP	1	CONTROL, Throttle, 40" (Part # Stamped on Cable) Mod. 2691358-00 & 2691359-00
0210	1739312YP	1	KNOB, Throttle (Red)
0220	797483	1	SCREW, 8-32 X 3/8, Pan Head Torx
0230	703460	1	NUT, #8-32, Hex, Zinc/Clear
0280	1760041AYP	1	PANEL, Control (Black)
0290	705876	3	NUT, 1/4-20, .025/.150, Speed, Lug Type .025/.150
0310	7090999	5	PHST, 1/4-20 X 5/8 TORX
0340	797420YP	1	COVER, Static/Lable Assembly
0350	799359	1	SCREW, #8-18 X 7/8", Pan Head Hi/Lo Thread Rolling

Footnotes

NOTE: * Purchase engine parts from engine manufacturer dealer.

The above parts group applies to the following Mfg. Nos.:

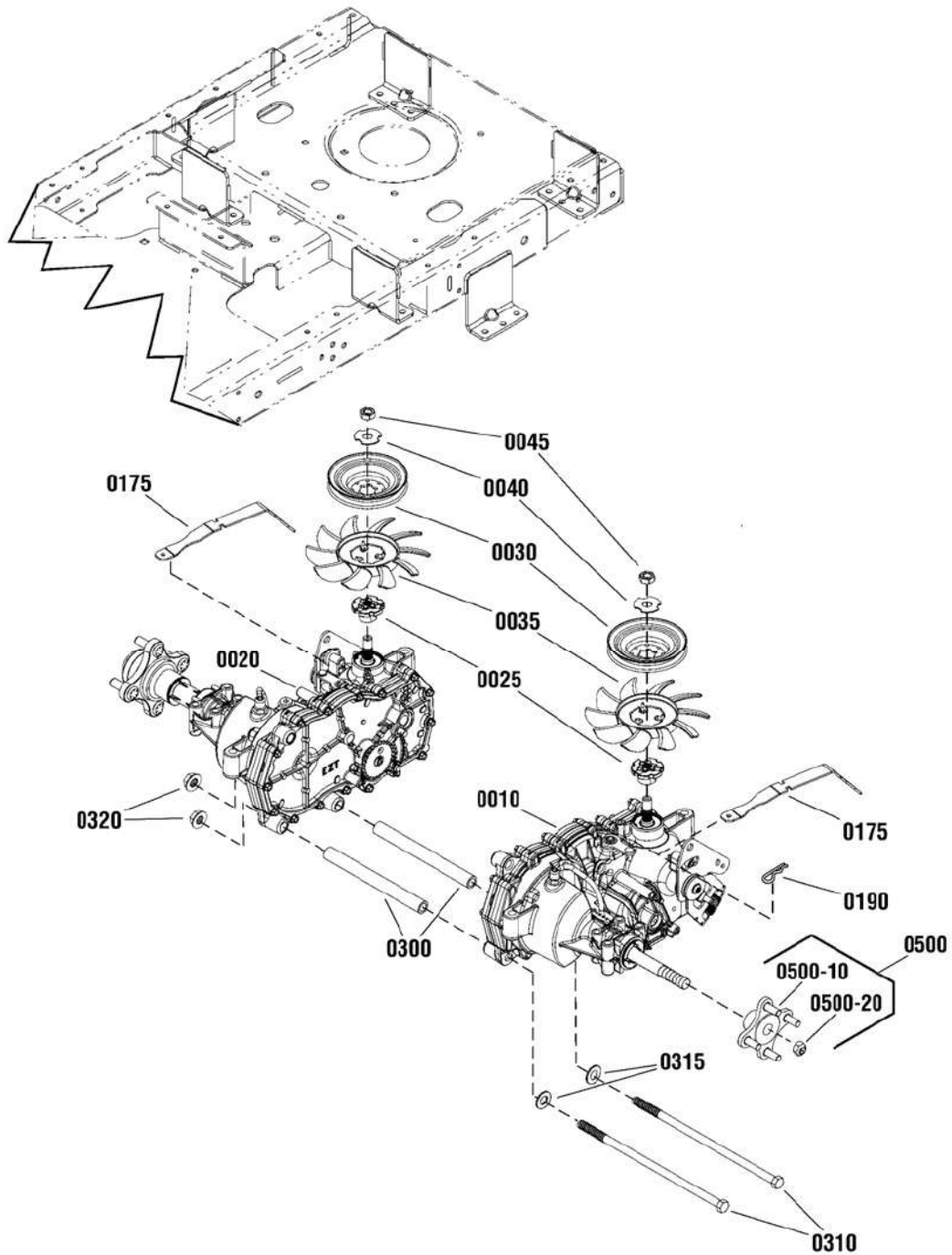
2691357-00 - Courier

2691359-00 - Courier

Transmission Group

NOTE: Unless noted otherwise,
use the standard hardware torque
specification chart.

2991930



The above parts group applies to the following Mfg. Nos.:

2691359-00 - Courier

Transmission Group

REF NO	PART NO.	QTY.	DESCRIPTION
0010	1759444YP	1	TRANSMISSION, LH, Hydro Gear
0020	1759443YP	1	TRANSMISSION, RH, Hydro Gear
0025	1759450YP	2	SPACER, Transmission
0030	1759447YP	2	PULLEY, Transmission
0035	1759449YP	2	FAN, Input
0040	5102914YP	2	WASHER, Slotted
0045	5102916YP	2	NUT, ZT5400
0175	1759654AYP	2	Valve, Tow
0190	1722460SM	2	PIN, Hair
0300	1759392YP	2	SPACER, Transmission
0310	707945	2	CAPSCREW, HexHead, 7/16-14 X 11 1/4
0315	703183	6	WASHER, Flat
0320	1930650SM	4	NUT, Flange, 7/16-14
0500	7600158YP	1	KIT, Hub Replacement (Includes Ref. 0500-10 & 0500-20)
0500-10	----	1	HUB, EZT Transmission
0500-20	----	1	NUT, EZT Transmission

Not for
Reproduction

Footnotes

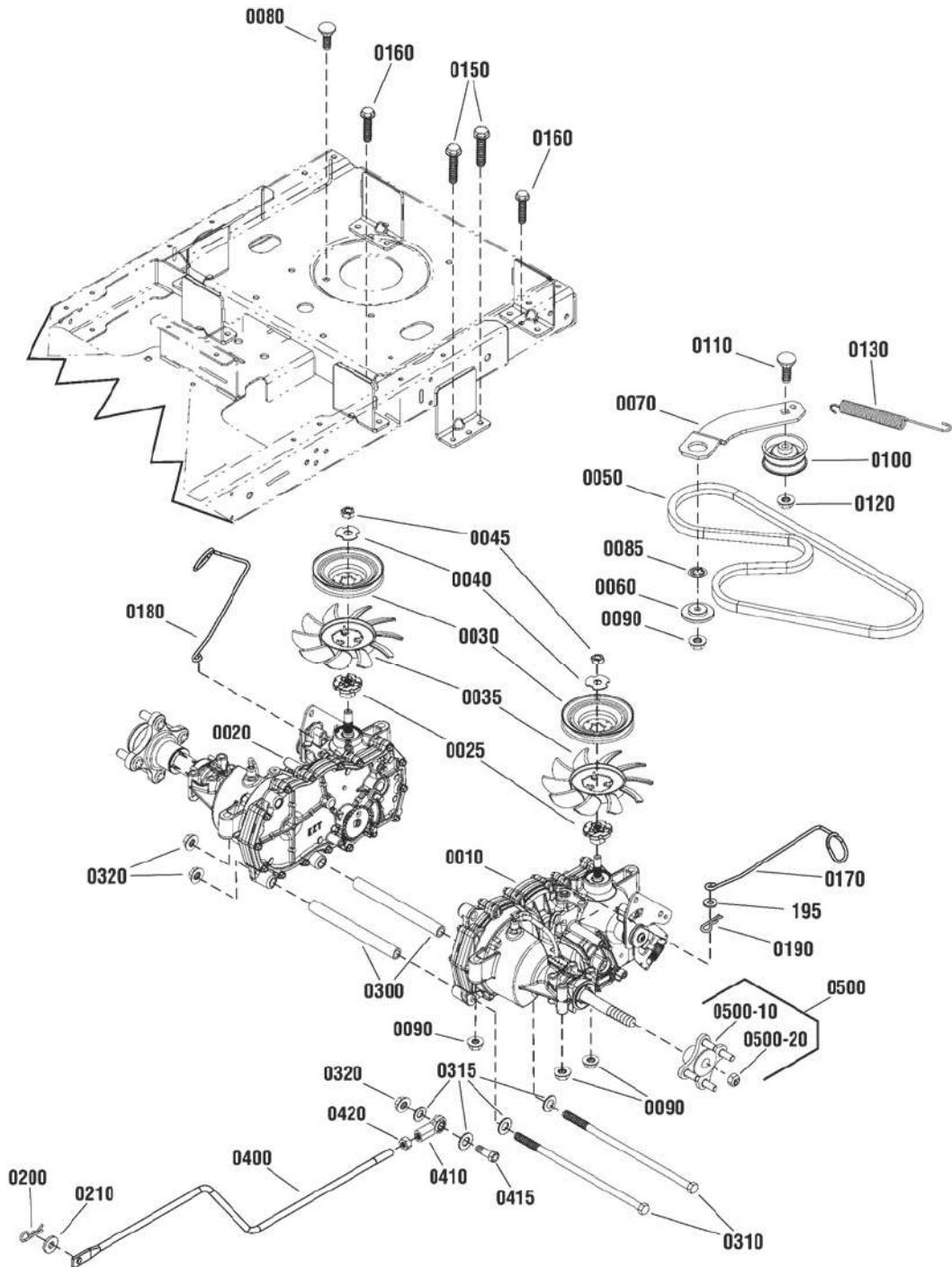
The above parts group applies to the following Mfg. Nos.:

2691359-00 - Courier

Transmission Group

NOTE: Unless noted otherwise,
use the standard hardware torque
specification chart.

2991931



The above parts group applies to the following Mfg. Nos.:

2691357-00 - Courier

Transmission Group

REF NO	PART NO.	QTY.	DESCRIPTION
0010	1759444YP	1	TRANSMISSION, LH, Hydro Gear
0020	1759443YP	1	TRANSMISSION, RH, Hydro Gear
0025	1759450YP	2	SPACER, Transmission
0030	1759447YP	2	PULLEY, Transmission
0035	1759448YP	2	FAN, Input
0040	5102914YP	2	WASHER, Slotted
0045	5102916YP	2	NUT, ZT5400
0050	1758100YP	1	BELT, Transmission
0060	1727935SM	1	SPACER, Pivot
0070	1758044AYP	1	ARM, Idler
0080	703800	1	BOLT, Carriage, 5/16-18 X 1
0085	703297	1	RETAINER, 5/16 X 5/8
0090	703115	9	NUT, Flange, 5/16-18, GR F
0100	1668477SM	1	PULLEY, Idler
0110	703879	1	BOLT, Carriage, 3/8-16 X 1 3/4
0120	5025394SM	1	NUT, 3/8-16, Hex Flange Nylock
0130	1758045YP	1	SPRING, Extension
0150	707943	4	SCREW, Washer Head, 5/16-18 X 3
0160	707944	4	SCREW, Washer Head, 5/16-18 X 2 1/4
0170	1759245YP	1	ROD, Release, LH
0180	1759246YP	1	ROD, Release, RH
0190	1722460SM	2	PIN, Hair
0195	703332	2	WASHER, 1/4" ID, 58" OD, Flat, GR5 Zinc/Clear
0200	703300	2	PIN, Hair
0210	704128	2	WASHER, Flat
0300	1759392YP	2	SPACER, Transmission
0310	707945	2	CAPSCREW, HexHead, 7/16-14 X 11 1/4
0315	703183	6	WASHER, Flat
0320	1930650SM	4	NUT, Flange, 7/16-14
0400	1757966YP	2	ROD, Control
0410	1759799YP	2	ROD, 7/16-20 RH, Female
0415	703579	2	CAPSCREW, HexHead, 7/16-14 X 1 1/4, GR8
0420	7090460SM	2	NUT, Hex, 7/16F GR5
0500	7600158YP	1	KIT, Hub Replacement (Includes Ref. 0500-10 & 0500-20)
0500-10	----	1	HUB, EZT Transmission
0500-20	----	1	NUT, EZT Transmission

Footnotes

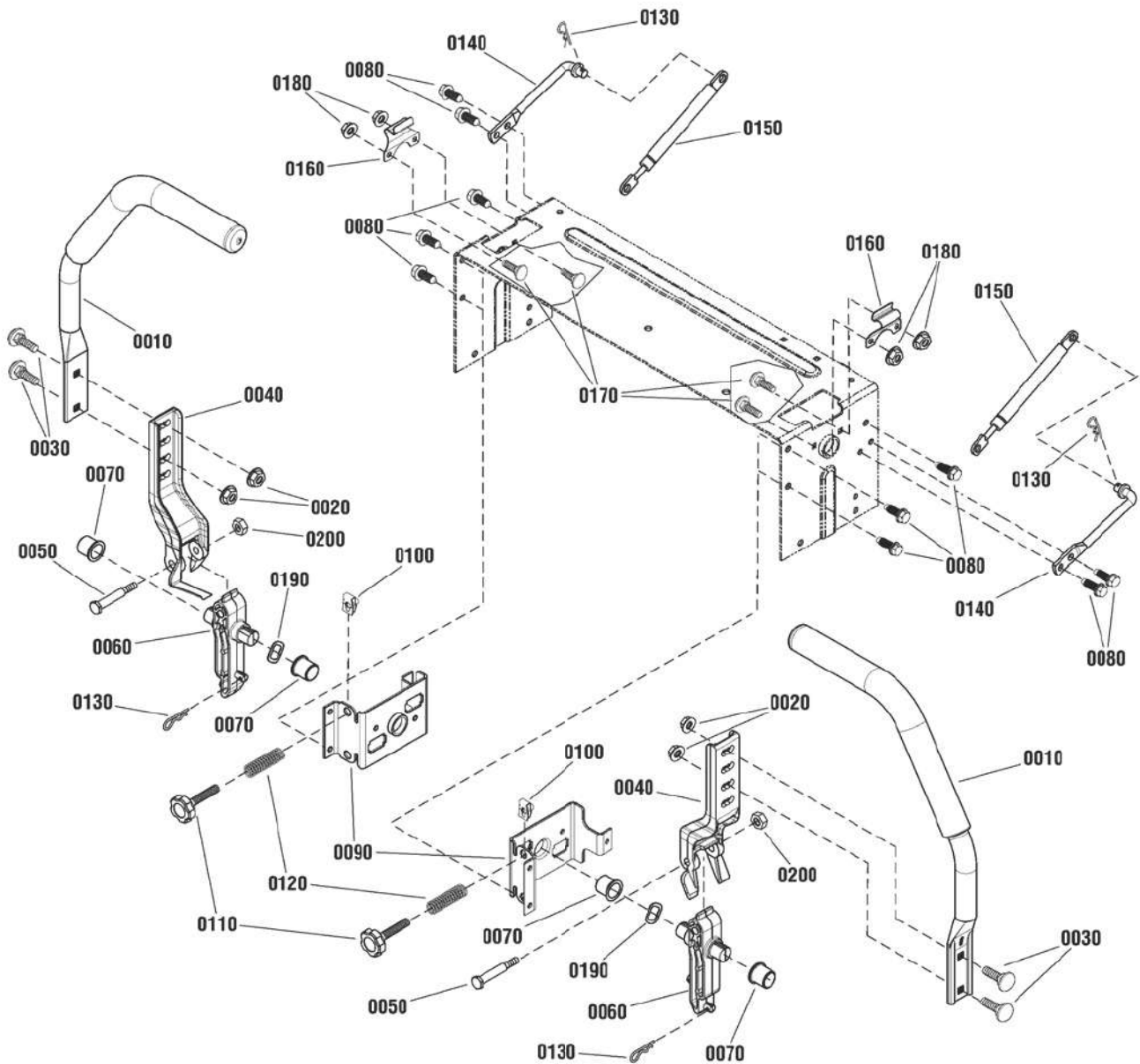
The above parts group applies to the following Mfg. Nos.:

2691357-00 - Courier

Controls Group

NOTE: Unless noted otherwise,
use the standard hardware torque
specification chart.

2991637



The above parts group applies to the following Mfg. Nos.:

2691357-00 - Courier

2691359-00 - Courier

Controls Group

REF NO	PART NO.	QTY.	DESCRIPTION
0010	1758372YP	2	HANDLE, Control w/Grip
0020	703115	4	NUT, Nylock Flange, 5/16-18
0030	703483	4	BOLT, Carriage, 5/16-18 X 1
0040	1757965YP	2	ARM, Upper Control
0050	707624	2	BOLT, Shoulder, 5/16-18 X 3/8 DIA, GR5
0060	1757964YP	2	ARM, Lower Control
0070	2176440SM	4	BUSHING
0080	703949	10	SCREW, Washer Head, 5/16-18 X 5/8
0090	1758087AYP	2	PIVOT, Inner Control
0100	1960717SM	2	NUT, Speed, 5/16-1*
0110	1758373YP	2	KNOB, Stud, 5/16-18 X 2 1/2
0120	1650347SM	2	SPRING, Compression
0130	1722460SM	4	PIN, Hair
0140	1758463YP	2	ROD, Dampner Mount
0150	1758152YP	2	CONTROL, Dampner
0160	1759182YP	2	LATCH, Control Arm
0170	1960252SM	4	BOLT, carriage, 1/4-20 x 5/8, G5
0180	703463	4	NUT, Nylock Flange, 1/4-20, GR5
0190	707625	2	WASHER, Wave, 3/4
0200	5025057SM	2	NUT, Nylock, 5/16-18

Not for
Reproduction

Footnotes

The above parts group applies to the following Mfg. Nos.:

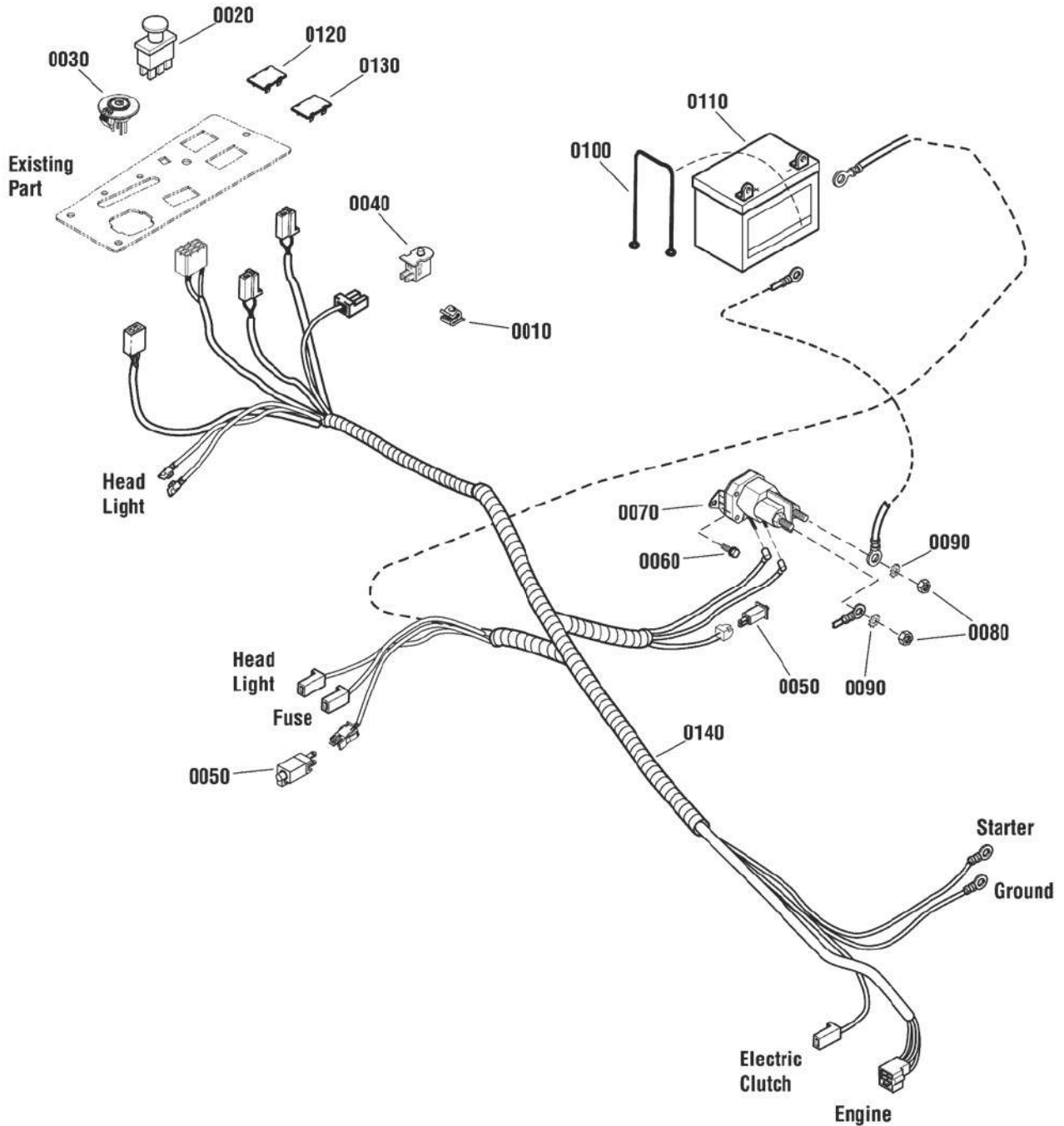
2691357-00 - Courier

2691359-00 - Courier

Electrical Group

NOTE: Unless noted otherwise, use the standard hardware torque specification chart.

2991602



The above parts group applies to the following Mfg. Nos.:

2691359-00 - Courier

Electrical Group

REF NO	PART NO.	QTY.	DESCRIPTION
0010	2172434SM	2	CLIP, wire
0020	5022180SM	1	SWITCH, Blade Engage
0030	7106169YP	1	SWITCH, Ignition
0040	7023354YP	1	SWITCH, Seat
0050	7022886YP	2	SWITCH, DP NO/NC SNAP-IN
0060	1960252SM	2	BOLT, Carriage, 1/4-20 x 5/8, G5
0070	1755382YP	1	SOLENOID
0080	703463	2	NUT, NyLock, 1/4-20, GR5
0090	703061	3	NUT, Keps, 1/4-20
0100	1722009SM	1	STRAP
0110	----	1	BATTERY, 230 CCA (Not a serviceable part)
0120	1729993SM	1	PLUG, Hole
0130	1722611SM	1	PLUG, Hole
0140	1758084YP	1	HARNESS, Main

Not for
Reproduction

Footnotes

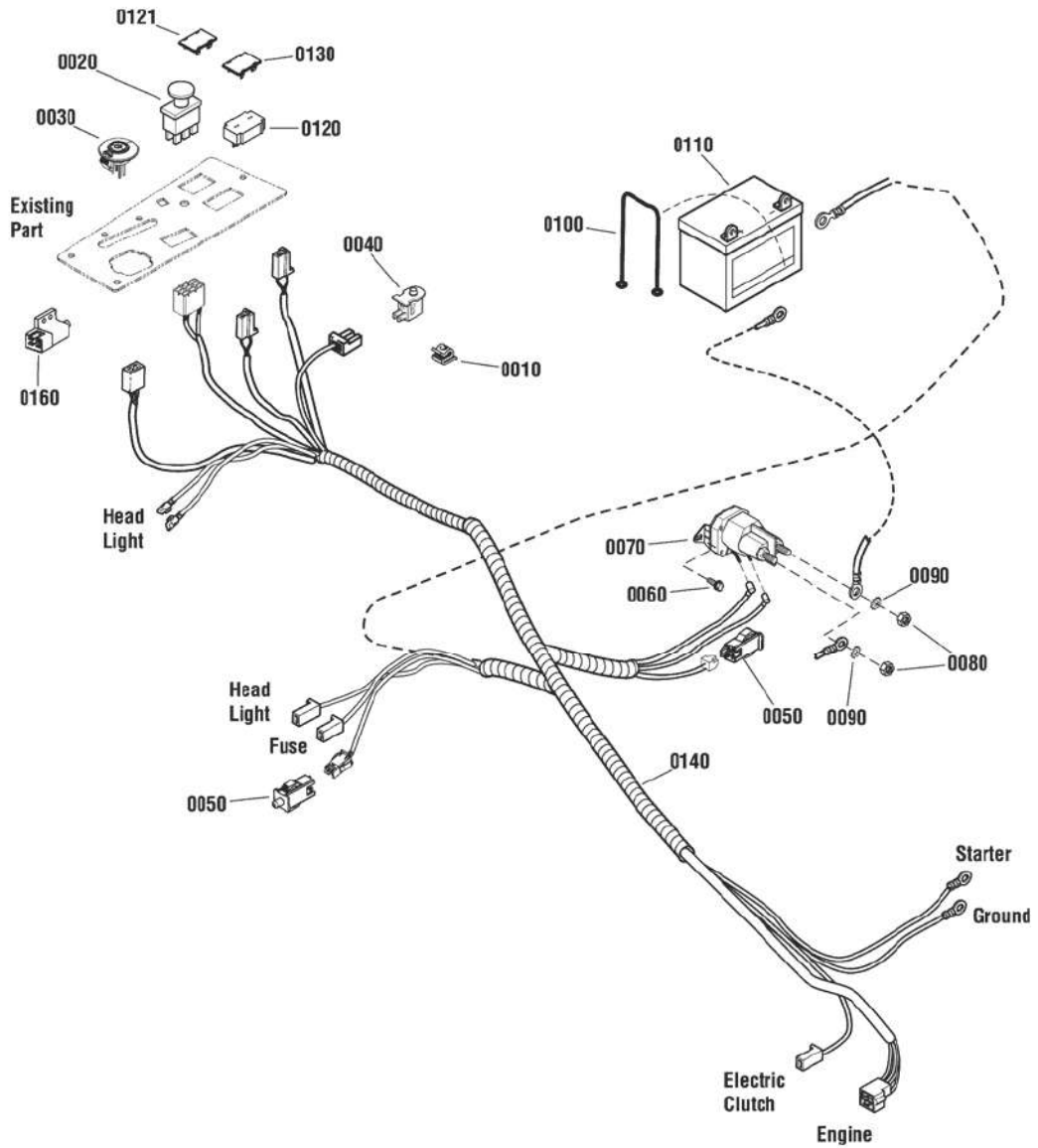
The above parts group applies to the following Mfg. Nos.:

2691359-00 - Courier

Electrical Group

2992082

NOTE: Unless noted otherwise,
use the standard hardware torque
specification chart.



The above parts group applies to the following Mfg. Nos.:

2691357-00 - Courier

2691359-00 - Courier

Electrical Group

REF NO	PART NO.	QTY.	DESCRIPTION
0010	2172434SM	2	CLIP, Wire, .390 Dia.
0020	1722887SM	1	SWITCH, PTO Push/Pull, Yel Knob w/Symbols, 8 Terminal
0030	7106169YP	1	SWITCH, Ignition, Delta (3 Postition)
0040	7023354YP	1	SWITCH, Seat, Push Button (NC - Gray)
0050	7022886YP	2	SWITCH, DP, NO/NC, Snap-In
0060	1960252SM	2	BOLT, 1/4-20X .625, G5 BLK, Carriage
0070	1755382YP	1	SOLENOID, 1/4-20 STD, 2 Spade
0080	703463	2	NUT, 1/4-20, GR5 Flanged Nylock, Zinc/Clear
0090	703061	3	NUT, 1/4-20, Keps, Conical Washer
0100	1722009SM	1	STRAP, Rubber, 13"
0110	----	1	BATTERY, 230 CCA, 8U1L (Not a Part Sale Item)
0120	1731185SM	1	HOUR METER, Digital, No Alarms
0121	1729993SM	1	PLUG, Hole, 1.180 X 1.690
0130	1722611SM	1	PLUG, Hole, .85 X 1.73
0140	1758084YP	1	HARNESS, Main, EU, ZTR
0160	1717050SM	1	SWITCH, Push Button, N.O . N.C, Double Pole, Grey

Not for
Reproduction

Footnotes

The above parts group applies to the following Mfg. Nos.:

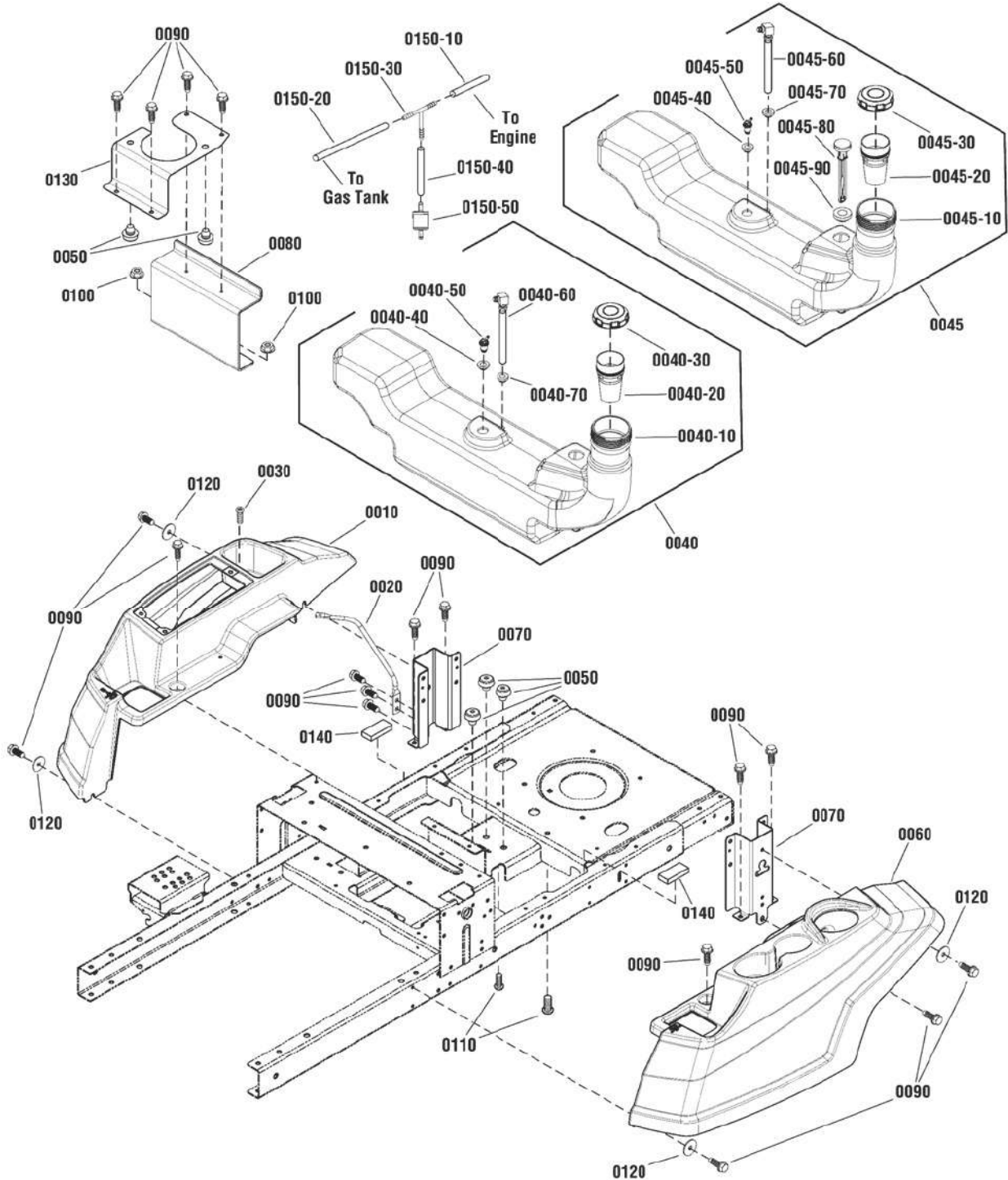
2691357-00 - Courier

2691359-00 - Courier

Body, Fuel Tank & EVAP Group

2991638

NOTE: Unless noted otherwise,
use the standard hardware torque
specification chart.



The above parts group applies to the following Mfg. Nos.:

2691357-00 - Courier

2691359-00 - Courier

Body, Fuel Tank & EVAP Group

REF NO	PART NO.	QTY.	DESCRIPTION
0010	1758077YP	1	FENDER, RH
0020	1759369YP	1	ROD, Support
0030	7090999SM	1	SCREW, Phillips Head, 1/4-20 X 5/8
0040	1758202YP	1	FUEL TANK ASSEMBLY, No Fuel Gauge (Incl. Ref. Nos. 0040-10 0040-20, 0040-30, 0040-40, 0040-50, 0040-60 & 0040-70)
0040-10	----	1	* TANK, Fuel (Included in Ref. No. 0040)
0040-20	1758282YP	1	NECK, Fuel Filter (Included in Ref. No. 0040)
0040-30	1758314YP	1	CAP, Fuel (Non Vented) (Included in Ref. No. 0040)
0040-40	799624	1	GROMMET (Included in Ref. No. 0040)
0040-50	7104638YP	1	VENT, Remote (Included in Ref. No. 0040)
0040-60	1758927YP	1	TUBE, Fuel Pickup (Included in Ref. No. 0040)
0040-70	1726400SM	1	BUSHING (Included in Ref. No. 0040)
0045	1758919YP	1	FUEL TANK ASSEMBLY. W / Fuel Gauge (Incl. Ref. Nos. 0045-10, 0045-20, 0045-30, 0045-40, 0045-50, 0045-60, 0045-70, 0045-80 & 0045-90)
0045-10	----	1	* TANK, Fuel (Included in Ref. No. 0045)
0045-20	1758282YP	1	NECK, Fuel Filter (Included in Ref. No. 0045)
0045-30	1758314YP	1	CAP, Fuel (Non Vented) (Included in Ref. No. 0045)
0045-40	799624	1	GROMMET (Included in Ref. No. 0045)
0045-50	7104638YP	1	VENT, Remote (Included in Ref. No. 0045)
0045-60	1758927YP	1	TUBE, Fuel Pickup (Included in Ref. No. 0045)
0045-70	1726400SM	1	BUSHING (Included in Ref. No. 0045)
0045-80	1758928YP	1	GAUGE, Fuel (Included in Ref. No. 0045)
0045-90	1722337SM	1	GROMMET (Included in Ref. No. 0045)
0050	197546GS	5	MOUNT, Vibration
0060	1758076YP	1	FENDER, LH
0070	1758239AYP	2	SUPPORT, Rear Fender
0080	1758889AYP	1	SUPPORT, Seat Spring
0090	1664847SM	18	SCREW, Taptite, 5/16-18 x 3/4
0100	703158	2	NUT, Flange, 3/8-16
0110	707790	2	SCREW, Button Head, 3/8-16 X .88
0120	1960044SM	4	WASHER, Flat, 5/16
0130	1759140AYP	1	STRAP, Fuel Tank
0140	1759405YP	2	BUMPER
0150-10	7700552X7YP	1	HOSE, Vapor
0150-20	7700552X22YP	1	HOSE, Vapor
0150-30	5103062YP	1	FITTING, Tee
0150-40	7700552X7YP	1	HOSE, Vapor
0150-50	691035	1	FILTER, Fuel

Footnotes

* Not a serviceable part.

The above parts group applies to the following Mfg. Nos.:

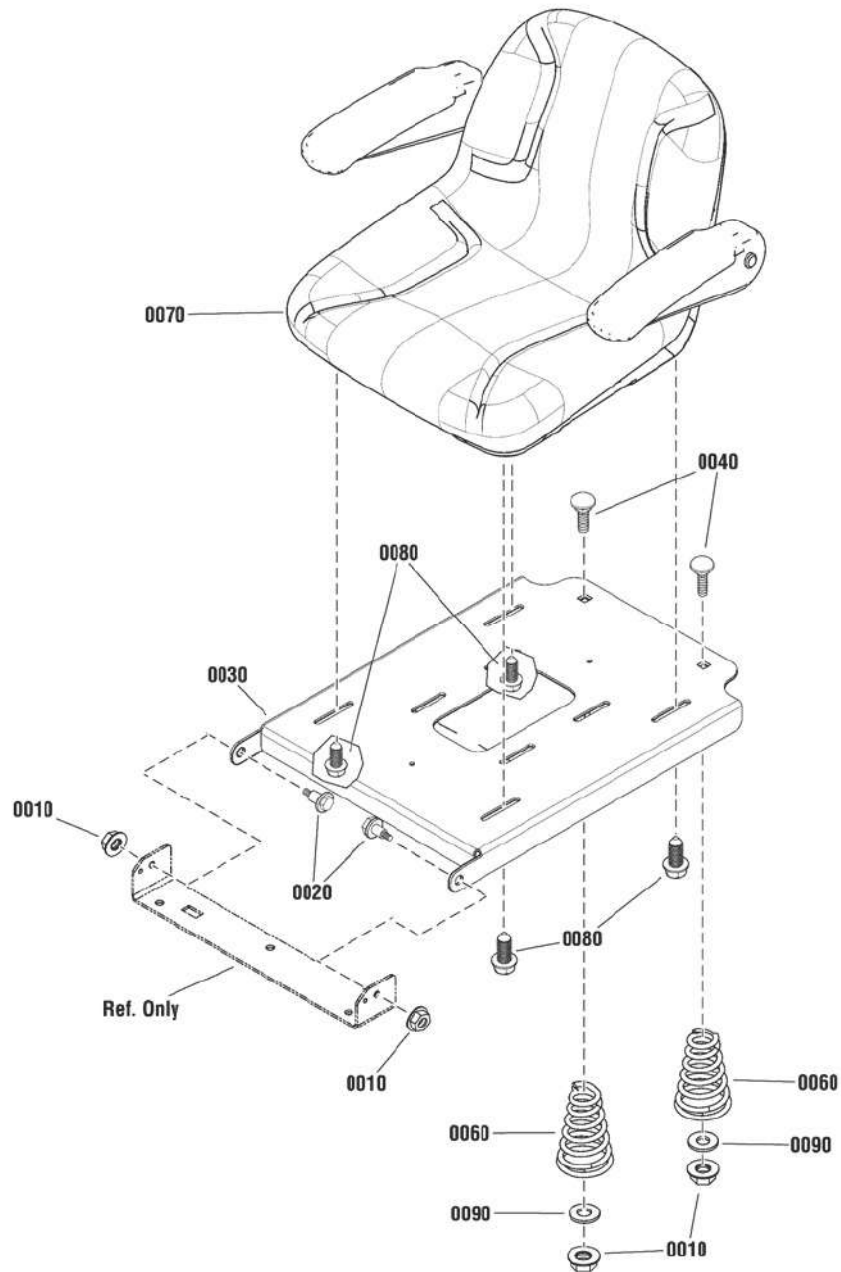
2691357-00 - Courier

2691359-00 - Courier

Seat Group W/Armrests

2992196

NOTE: Unless noted otherwise,
use the standard hardware torque
specification chart.



The above parts group applies to the following Mfg. Nos.:

2691357-00 - Courier

2691359-00 - Courier

Seat Group W/Armrests

REF NO	PART NO.	QTY.	DESCRIPTION
0010	703115	4	NUT, 5/16-18, Flange Nylock, GR F, Zinc/Clear
0020	1752802YP	2	BOLT, Shoulder, 5/16-18 x 1.03LG, .50SH .19L
0030	1757799CYP	1	SLIDE, Seat (Orange)
0040	703483	2	BOLT, 5/16-18 X 1 Carriage, GR5, Zinc/Clear
0060	1717051SM	2	SPRING, Seat Conical .94/1.76 MD, 2.95 LG, .177 Wire
0070	1687857YP	1	KIT, Seat, 15" Fancy Vinyl, W/Armrests
0080	1960667SM	4	SCREW, 5/16-18X1.0, Hex Flanged Whiz Lock
0090	704128	2	WASHER, .406X1.0X.134 Flat, Zinc/Clear

Not for
Reproduction

Footnotes

The above parts group applies to the following Mfg. Nos.:

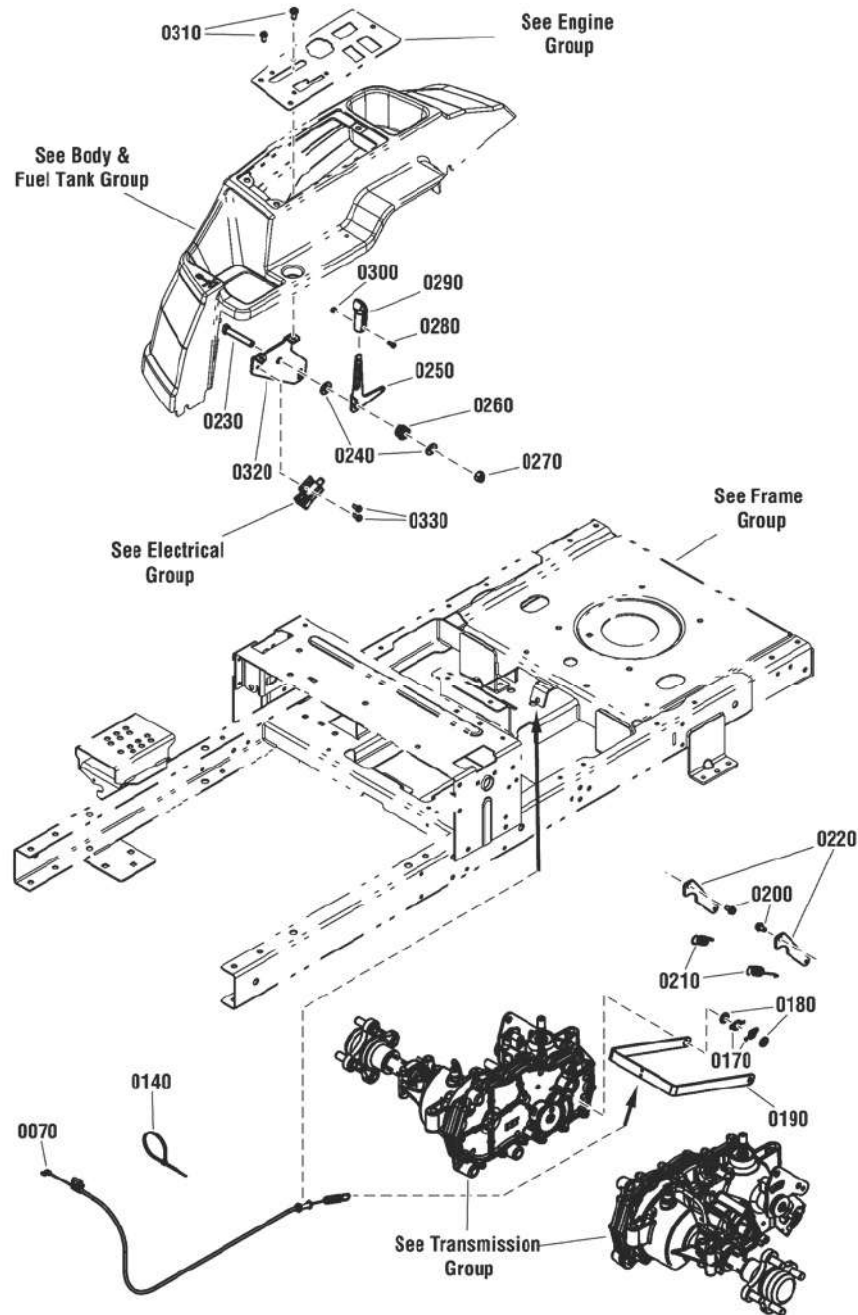
2691357-00 - Courier

2691359-00 - Courier

Parking Brake Group

2992157

NOTE: Unless noted otherwise,
use the standard hardware torque
specification chart.



The above parts group applies to the following Mfg. Nos.:

2691357-00 - Courier

2691359-00 - Courier

Parking Brake Group

REF NO	PART NO.	QTY.	DESCRIPTION
0070	1759207YP	1	CABLE, Parking Brake
0140	703586	2	TIE, 7, Self Locking
0170	7091594SM	2	COTTER PIN, Self Locking, For 1/2" Dia. Pin w/1/16" Hole, YZ
0180	703946	2	WASHER, .390 ID X .720 OD X .054 Thk, Flat, ZC/CL
0190	1758126AYP	1	ARM, Parking Brake
0200	704130	2	SCREW, 1/4-20 X .500, Hex HD, Self-Tap, Zinc/Clear
0210	1758283YP	2	SPRING, Extension
0220	1759349YP	2	BRACKET, Brake Spring
0230	703872	1	SCREW, 3/8-16 X 2.250, Hex Head Cap, GR 5, Zinc/Clear
0240	5025401YP	2	WASHER, 3/8 USS
0250	7301074YP	1	LEVER, Park Brake, YZ
0260	7028036YP	1	SPRING, Friction Pack
0270	5025096SM	1	NUT, 3/8-16 Hex Nylon Lock
0280	7091017YP	1	SCREW, #8-32 x 3/8 Cross Recess Filister Head, GR 2, BZ
0290	7023655YP	1	LEVER, Throttle Control
0300	703460	1	NUT, #8-32, Hex, Zinc/Clear
0310	703953	2	SCREW, 1/4-20 X 5/8, Torx Pan Head Self-Tapping, Zinc/Clear
0320	1759968AYP	1	BRACKET, Park Brake Lever
0330	704060	2	SCREW, 10-24 x 1/2" Hex Washer Self-Tap, Torx, ZC/CL

Not for
Reproduction

Footnotes

The above parts group applies to the following Mfg. Nos.:

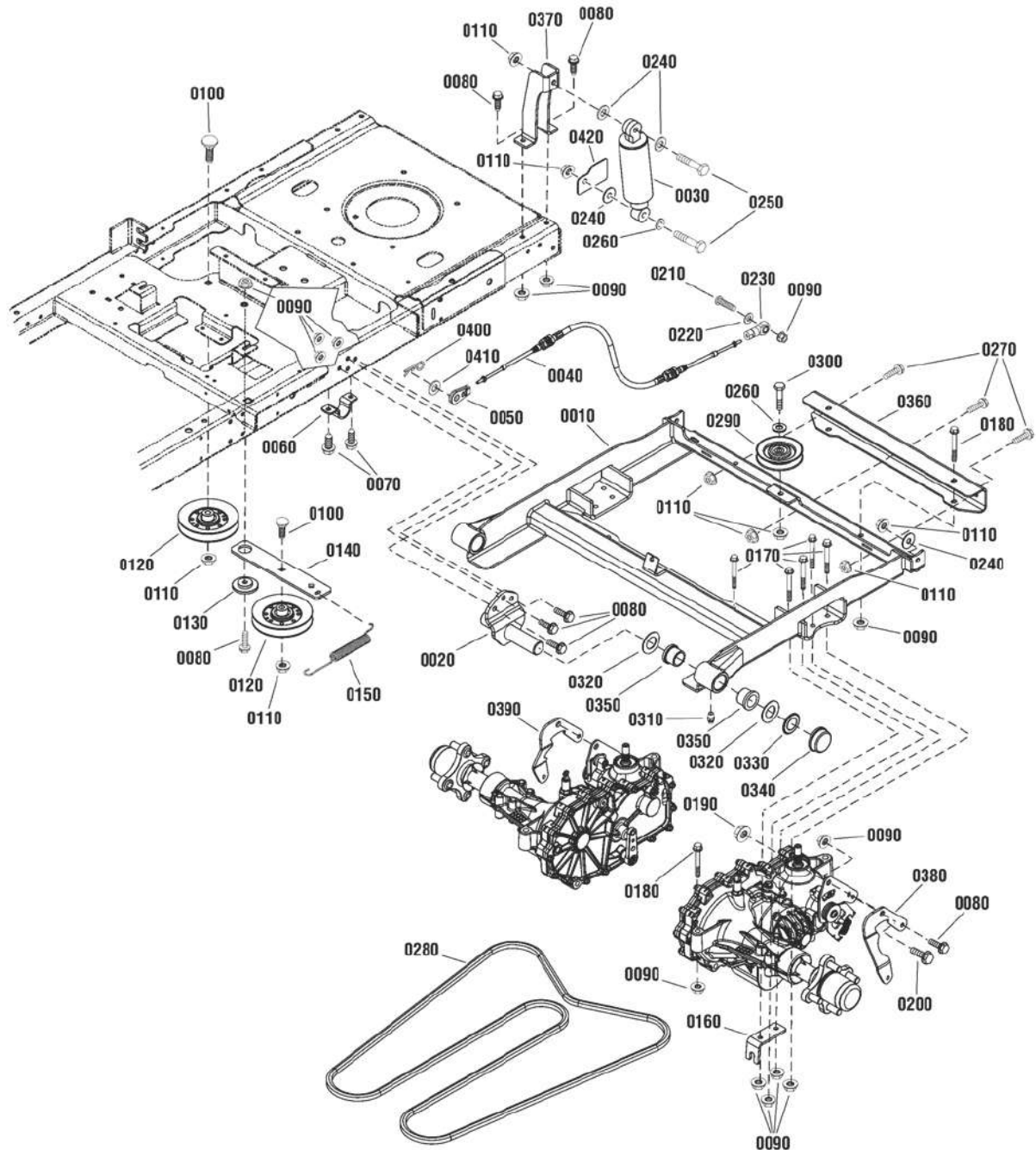
2691357-00 - Courier

2691359-00 - Courier

Rear Suspension Group

NOTE: Unless noted otherwise,
use the standard hardware torque
specification chart.

2992189



The above parts group applies to the following Mfg. Nos.:

2691359-00 - Courier

Rear Suspension Group

REF NO	PART NO.	QTY.	DESCRIPTION
0010	1758718CYP	1	WELDMENT, Transmission Carrier (Orange)
0020	1758716CYP	2	WELDMENT, Rear Swing Arm Pivot (Orange)
0030	1755531YP	2	SHOCK ABSORBER, 10.5" Length
0040	1759206YP	2	CABLE, Push/Pull, 33" LG
0050	1759413YP	2	END, Cable, .385 Hole, 10-31 UNF-2B, Alum
0060	1720147BZYP	2	STRAP, 1.0" Dia. Shaft
0070	703950	4	SCREW, 5/16-18 X .625, Hex Washer Head, Thread Roll, Zinc/Clear
0080	1960667SM	13	SCREW, Hex Flange, 5/16-18 X 1
0090	703115	27	NUT, 5/16-18, Flange Nylock, GR F, Zinc/Clear
0100	703858	2	BOLT, 3/8-16 X 1.75, Carriage, G5, ZC/CL
0110	5025394SM	10	NUT, 3/8-16, Hex Flange Nylock
0120	1759212YP	2	PULLEY, V-Idler, 4.50"
0130	1727935SM	1	SPACER, Pivot, 0.330 ID, 1.76 OD, .37TH P MTL
0140	1758744AYP	1	ARM, Transmission Idler (Black)
0150	1758045YP	1	SPRING, 7.18"Long, .75" OD, Extension
0160	1758822AYP	2	BRACKET, Lower Cable Mount (Black)
0170	707943	10	SCREW, 5/16-18 X 3", Hex Washer HD
0180	770083	2	SCREW, 5/16-18 X 2.50", Hex Washer HD
0190	1930650SM	2	NUT, 7/16-14, Hex Flange Two Way Lock, Black
0200	1960043SM	2	SCREW, 7/16-14 X 1, Hex Flange
0210	703172	2	SCREW, 5/16-18 X 1.25 Button HD, 3/16" Allen
0220	703302	2	WASHER, 5/16 SAE
0230	5101801YP	2	BALL JOINT, 10-32 Female, 5/16 Bore
0240	5025165SM	6	WASHER, 3/8 (.41 ID, 1.25 OD, .06 Thk) Fender
0250	5025013X14SM	4	BOLT, 3/8-16 X 1-3/4, GR 5, CZ
0260	703590	3	WASHER, 3/8 (.406 X .816 X .65), Flat, Zinc/Clear
0270	5025390X8	3	BOLT, 3/8-16 X 1, Flange, GR 5
0280	885714YP	1	BELT, Deck, HA 112.48 EL
0290	885482YP	1	PULLEY, V-Idler, 3.54" OD, .375" ID
0300	703872	1	SCREW, 3/8-16 X 2.250, Hex Head Cap, GR 5, Zinc/Clear
0310	1704314SM	2	LUBE, Fitting, .250 Drive, .25 SH, Check Ball, Yel
0320	703199	4	WASHER, 1.017 ID X 1.812 OD X .6 Thk, Flat, ZC/CL
0330	703200	2	PUSH NUT, 1.00 Shaft, Flat
0340	094618MA	2	HUB CAP, 1.817 ID
0350	1758717YP	4	BUSHING, FLANGE, 1" Tall, 1"ID, 1.25" OD, Flanged Plastic
0360	1759163CYP	1	SUPPORT, Transmission (Orange)
0370	1758778CYP	2	MOUNT, Rear Shock
0380	1759021AYP	1	PLATE, Transmission Control Arm, LH (Black)
0390	1759022AYP	1	PLATE, Transmission Control Arm, RH (Black)
0400	703300	2	PIN, Hair, 3/32 x 1-5/8, GR5, Zinc/Clear
0410	703878	2	WASHER, 13/32 x 7/8 x 5/64, Flat, Zinc/Clear
0420	1760061CYP	2	GUARD, Suspension (Orange)

Footnotes

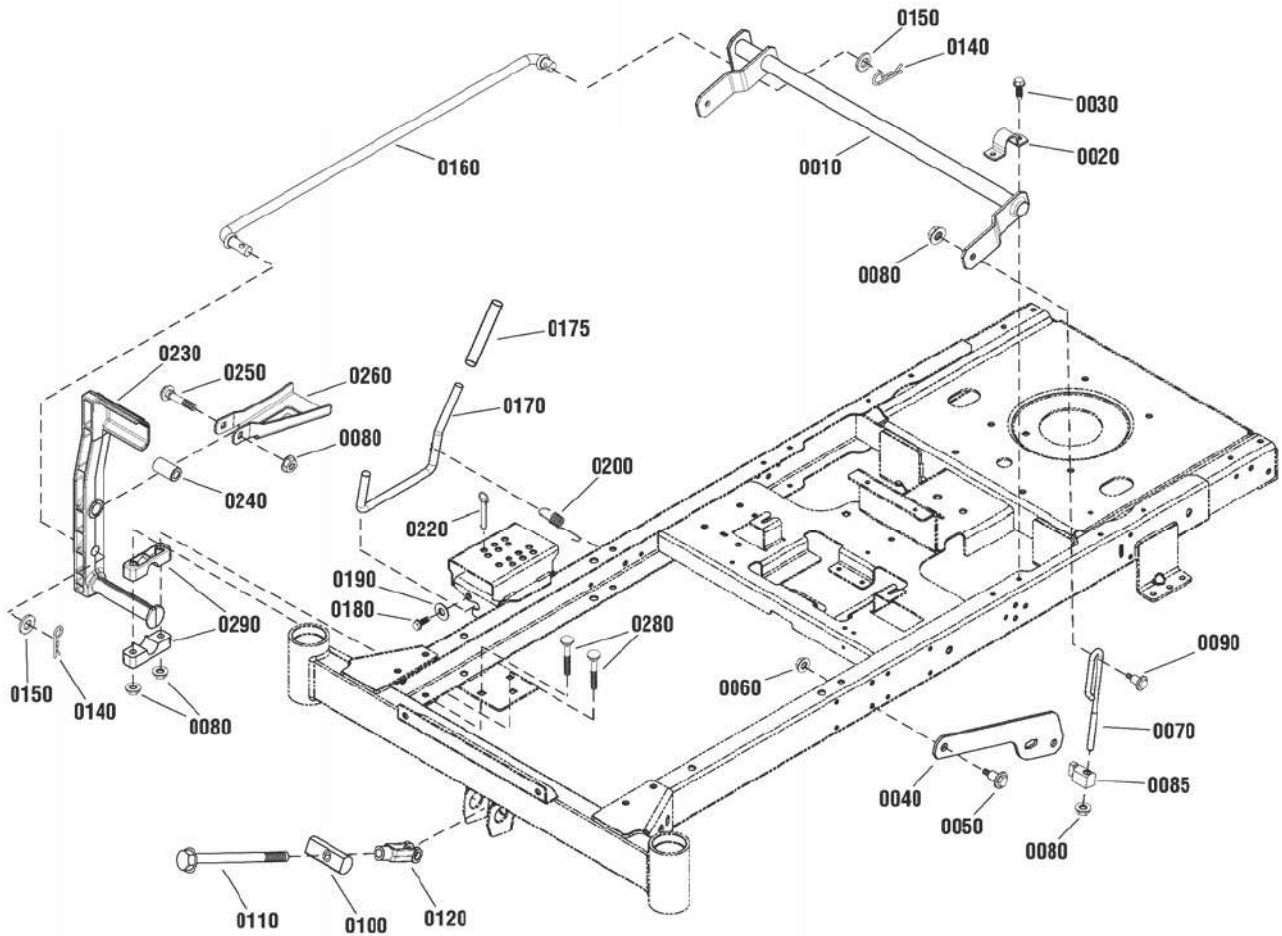
The above parts group applies to the following Mfg. Nos.:

2691359-00 - Courier

Lift Group

NOTE: Unless noted otherwise,
use the standard hardware torque
specification chart.

2991613



The above parts group applies to the following Mfg. Nos.:

2691357-00 - Courier

2691359-00 - Courier

Lift Group

REF NO	PART NO.	QTY.	DESCRIPTION
0010	1757958AYP	1	SHAFT, Lift
0020	1720147BZYP	2	STRAP
0030	703949	4	SCREW, Washer, 5/16-18 X 5/8
0040	1757953AYP	2	ARM, Lift
0050	1732426SM	2	BOLT, Shoulder, 5/16-18
0060	703115	2	NUT, Flange, 5/16-18, GR F
0070	1757936YP	2	ROD, Lift
0080	703158	9	NUT, Hex Flange, 3/8-16
0085	1731894SM	2	TRUNNION
0090	009X51MA	2	BOLT, Shoulder, 3/8-16
0100	1757955YP	1	TRUNNION, Mower
0110	1757954YP	1	ROD, Hitch
0120	5023174SM	1	CLEVIS, 1/2-20
0140	403162MA	2	PIN, Hair, 3/32 X 1.6
0150	5025281SM	2	WASHER, 5/8
0160	1758121YP	1	ROD, Foot Assist
0170	1758246YP	1	ROD, Transport
0175	1759817YP	1	GRIP, Foam
0180	703054	2	SCREW, Washer, 1/4-20 X 5/8
0190	5025288YP	2	WASHER, 1/4
0200	1758283YP	1	SPRING, Extension
0220	5103021YP	1	PIN, Hitch, 3/8 X 2 1/2
0230	1758232YP	1	PEDAL, Lift
0240	1756612YP	1	BUSHING
0250	7900009SM	1	BOLT, Carriage, 3/8-16 X 2 1/4, GR5
0260	1758284AYP	1	STOP, Height of Cut
0280	1960615SM	4	BOLT, Carriage, 3/8-16 X 2 1/2, GR5
0290	5100634SM	4	BLOCK

Footnotes

The above parts group applies to the following Mfg. Nos.:

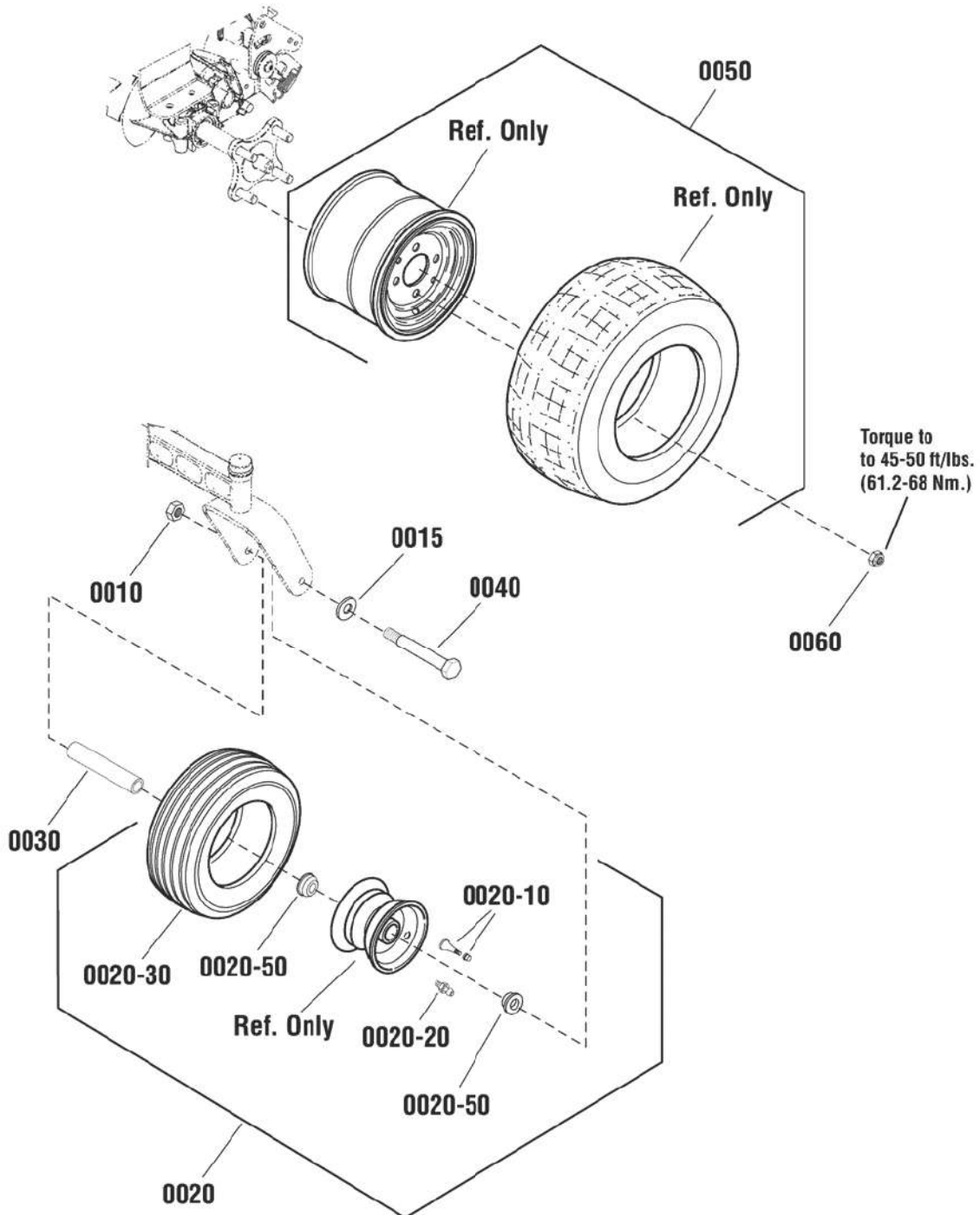
2691357-00 - Courier

2691359-00 - Courier

Wheel & Tire Group

2991994

NOTE: Unless noted otherwise, use the standard hardware torque specification chart.



The above parts group applies to the following Mfg. Nos.:

2691357-00 - Courier

2691359-00 - Courier

Wheel & Tire Group

REF NO	PART NO.	QTY.	DESCRIPTION
0010	1930650SM	2	NUT, Hex Two Way, 7/16-14
0015	703183	2	WASHER, 7/16
0020	1734013SM	2	ASSEMBLY, Wheel & Tire, Front Caster, 11 X 4-5
0020-10	2172353SM	4	VALVE STEM & CAP
0020-20	7104428YP	2	ZERK, Grease
0020-30	1734875SM	2	TIRE, 11 X 4-5
0020-50	1739281YP	4	BUSHING, 0.632ID, 1.377OD, 0.62 LG
0030	1734841SM	2	TUBE, 0.625OD, 4.530LG, 0.625OD, Caster Wheel
0040	7091772SM	2	SCREW, 7/16-14 x 6 Hex Head Cap, GR 5
0050	1759161YP	2	ASSEMBLY, Wheel Rear, 20 X 8-8
0050	1759585YP	2	ASSEMBLY, Wheel Rear, 20 X 10-8
0050	1758079YP	2	ASSEMBLY, Wheel Rear, 20 X 10-10
0060	5020601SM	8	NUT, Lug, 1/2-20

Not for
Reproduction

Footnotes

The above parts group applies to the following Mfg. Nos.:

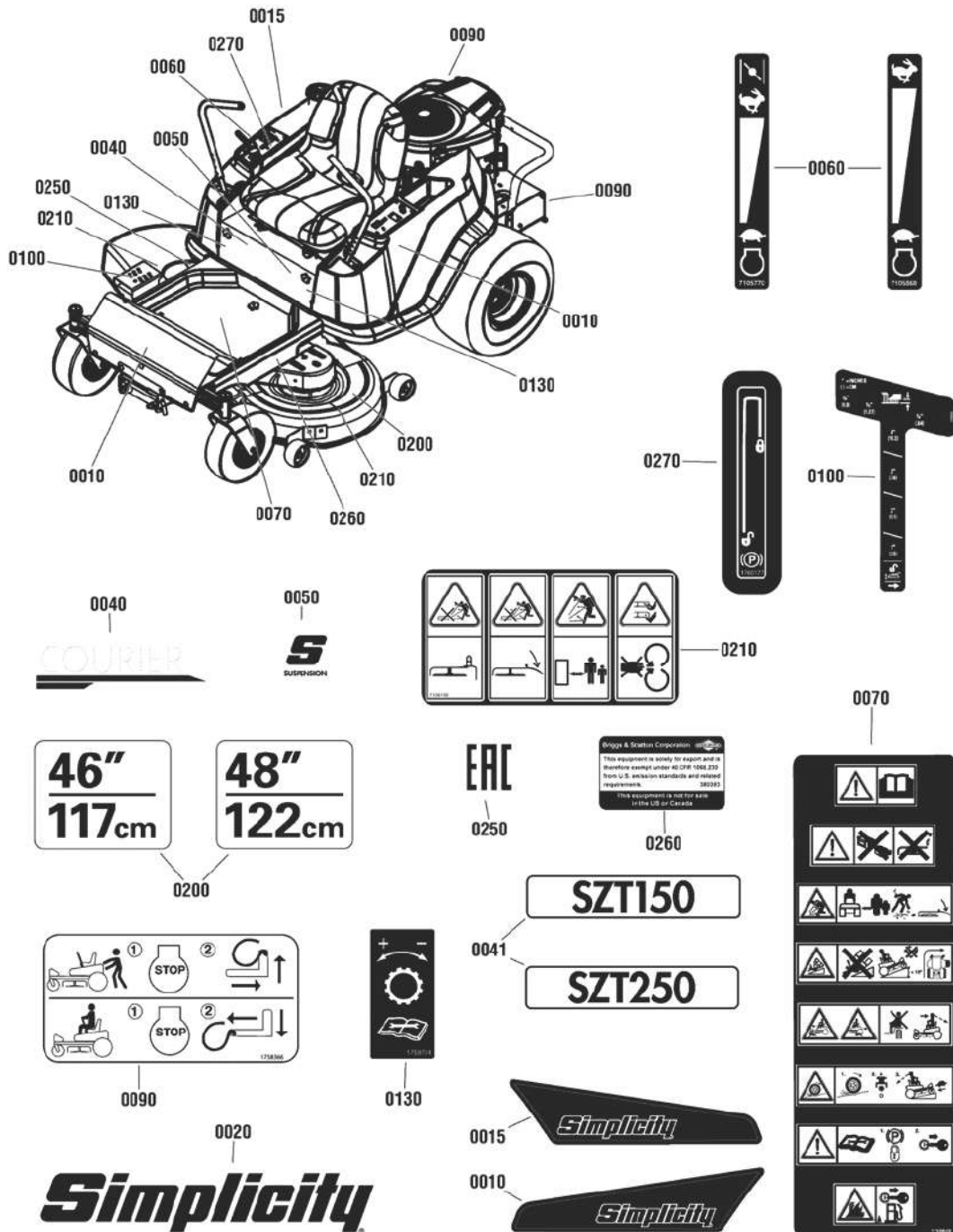
2691357-00 - Courier

2691359-00 - Courier

Decals Group

NOTE: Unless noted otherwise, use the standard hardware torque specification chart.

2992165_2992182



The above parts group applies to the following Mfg. Nos.:

2691357-00 - Courier

2691359-00 - Courier

Decals Group

REF NO	PART NO.	QTY.	DESCRIPTION
0010	1760168YP	1	DECAL, Simplicity Logo, LH Fender, 15.7" x 3.7"
0015	1760169YP	1	DECAL, Simplicity Logo, RH Fender, 15.7" x 3.7"
0020	1757673YP	1	DECAL, Simplicity Logo, 10.47"
0040	1759636YP	1	DECAL, Courier Model
0041	1759908YP	1	DECAL, SMI, SZT150
0041	1759910YP	1	DECAL, SMI, SZT250
0050	1759052YP	1	DECAL, Suspension
0060	7105770YP	1	DECAL, Engine Speed, RER
0060	7105868YP	1	DECAL, Engine Speed - No Choke
0070	1759648YP	1	DECAL, Main Safety - ZT (CE)
0090	1758366YP	2	DECAL, Tow Valve Release
0090	1759466YP	2	DECAL, Tow Valve Release (Susp)
0100	1759253YP	1	DECAL, Height of Cut
0130	1759724YP	2	DECAL, Tracking Adjustment - ZT
0200	1755718YP	1	DECAL, Mower Width 46" / 117CM
0200	1755719YP	1	DECAL, Mower Width, 48IN/122CM
0210	706111	2	DECAL, Discharge Safety (Symbols, 4.415" X 2.346")
0250	709953	1	DECAL, EAC Compliance
0260	706112	1	LABEL, Soley For Export - Exempt US Emissions
0270	1760177YP	1	DECAL, Park Brake

Not for
Reproduction

Footnotes

The above parts group applies to the following Mfg. Nos.:

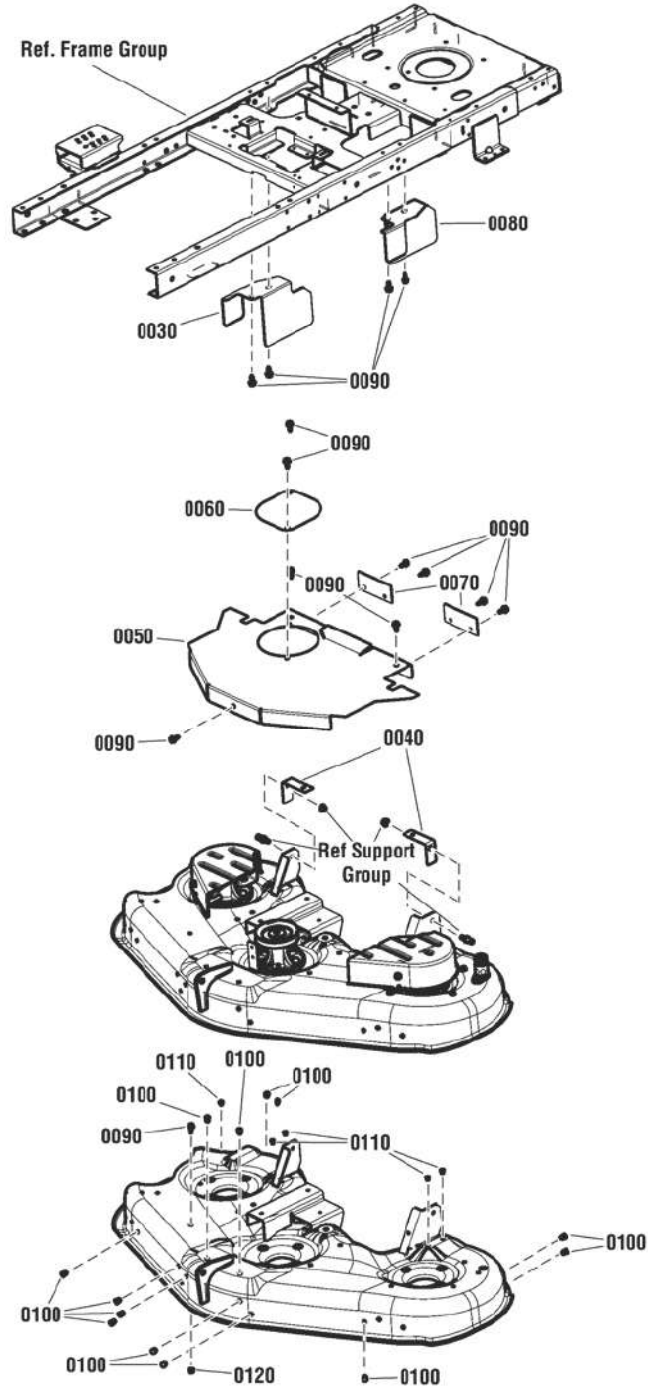
2691357-00 - Courier

2691359-00 - Courier

46" HOZ Guarding Group

2992177

NOTE: Unless noted otherwise,
use the standard hardware torque
specification chart.



The above parts group applies to the following Mfg. Nos.:

2691357-00 - Courier

46" HOZ Guarding Group

REF NO	PART NO.	QTY.	DESCRIPTION
0030	1759973AYP	1	GUARD, Belt
0040	1759974AYP	2	SUPPORT, Pulley Cover - Back
0050	1759975AYP	1	COVER, 46" Mower Deck Guarding
0060	1759976AYP	1	GUARD, Pulley, 46" Mower Deck
0070	1760070AYP	2	GUARD, 46"
0080	1760071AYP	1	GUARD, LH Belt
0090	703228	14	SCREW, 16-18X0.750, Hex Washer Head Tap-Tite T5
0100	7046780SM	13	PLUG, Hole, .44" OD, Polyethylene
0110	7073293YP	5	PLUG, Hole, .30 OD, Polyethylene
0120	5025127SM	1	NUT, 5/16-18, Hex Serated Flange (Small)

Not for
Reproduction

Footnotes

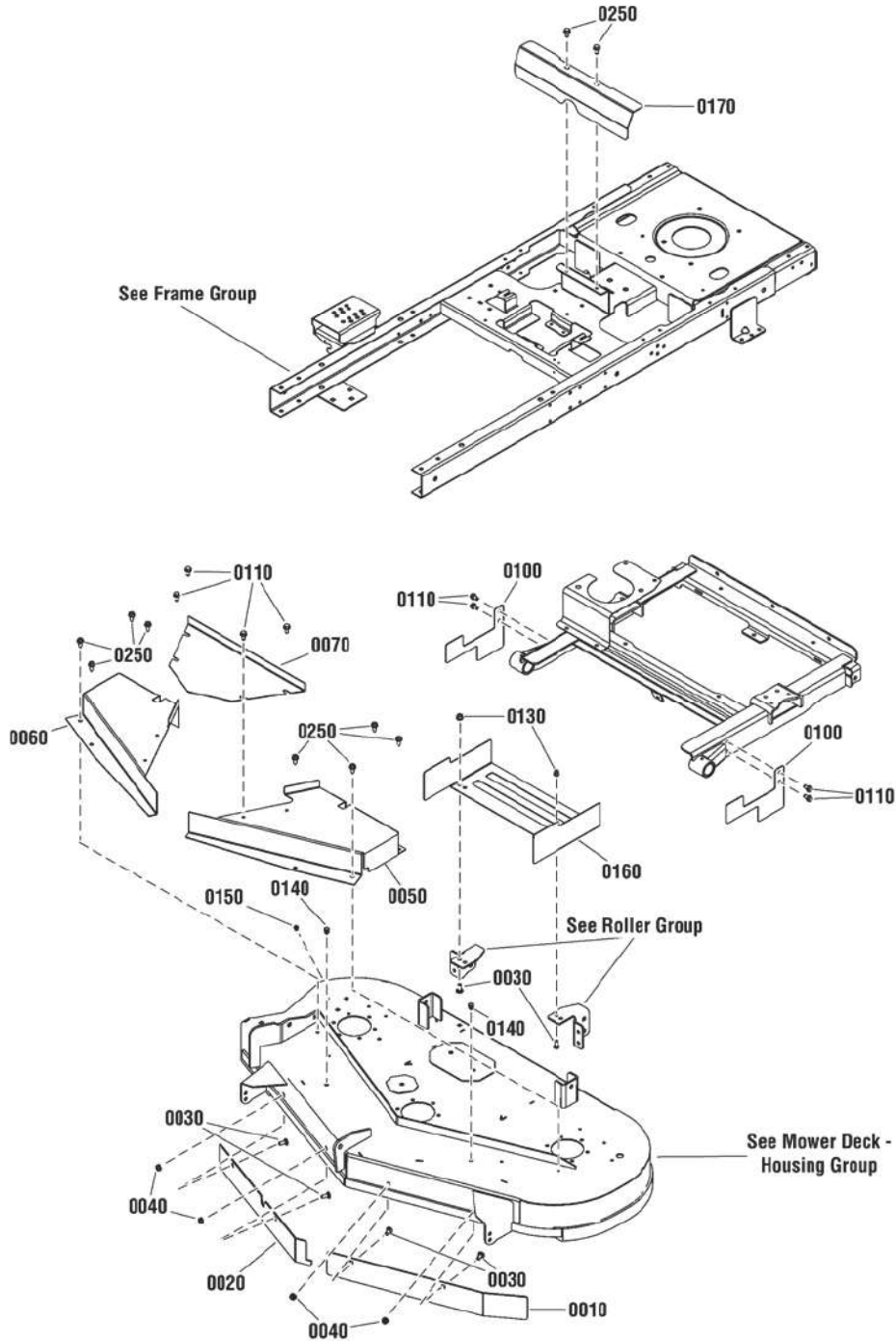
The above parts group applies to the following Mfg. Nos.:

2691357-00 - Courier

48" HOZ, Guarding Group, Susp

2992191

NOTE: Unless noted otherwise,
use the standard hardware torque
specification chart.



The above parts group applies to the following Mfg. Nos.:

2691359-00 - Courier

48" HOZ, Guarding Group, Susp

REF NO	PART NO.	QTY.	DESCRIPTION
0010	1759938CJYP	1	BAFFLE, 48, LH, Black
0020	1759939CJYP	1	BAFFLE, 48, RH, Black
0030	703185	4	BOLT, 5/16-18X3/4 GR5, Carriage, YZ
0040	5025127SM	4	NUT, 5/16-18, Hex Serated Flange (Small)
0050	1760054AYP	1	COVER, 48, LH Arbor, CE-Black
0060	1760055AYP	1	COVER, 48, RH Arbor, CE-Black
0070	1760074AYP	1	COVER, 48, Top Arbor, CE-Black
0100	1760087AYP	2	COVER, 48, Side Suspension,CE-Black
0110	703949	8	SCREW, 5/16-18 X .625, Hex Washer Head, Thread Roll, Zinc/Clear
0130	703115	2	NUT, 5/16-18, Flange Nylock, GR F, Zinc/Clear
0140	7046780SM	2	PLUG, Hole, .44" OD, Polyethylene
0150	7073293YP	1	PLUG, Hole, .30 OD, Polyethylene
0160	1760077AYP	1	COVER, 48, Rear Deck Belt, CE-Black
0170	1760154AYP	1	COVER, Bystander Pulley, Black
0250	703228	8	SCREW, 5/16-18X0.750,Washer Head Taptite, Zinc/Clear

Not for
Reproduction

Footnotes

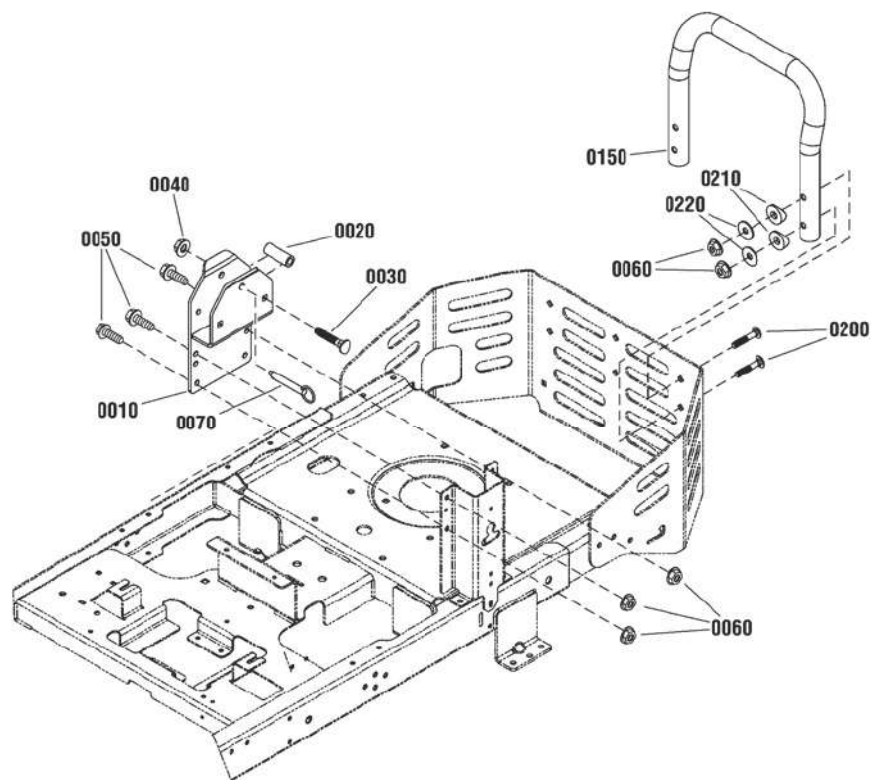
The above parts group applies to the following Mfg. Nos.:

2691359-00 - Courier

Cargo Box Group - ZT - No Cargo Bed

2992161

NOTE: Unless noted otherwise,
use the standard hardware torque
specification chart.



The above parts group applies to the following Mfg. Nos.:

2691359-00 - Courier

Cargo Box Group - ZT - No Cargo Bed

REF NO	PART NO.	QTY.	DESCRIPTION
0010	1759433AYP	2	SUPPORT, Cargo Box
0020	1713588SM	2	SPACER, .323 ID X .555 OD X 1.55 LG, CZ
0030	704421	2	SCREW, 5/16 X 2 1/4, Carriage SH NK ZC/CL
0040	704067	2	NUT, 5/16-18, Hex Flanged Center Lock, ZC/CL
0050	703354	6	SCREW, 5/16-18 X .750, Flanged Whiz-Lock, GR5
0060	703115	10	NUT, 5/16-18, Flange Nylock, GR F, Zinc/Clear
0070	5103021YP	2	PIN, Hitch, 3/8 X 2 1/2, Cotterless CZ
0150	1759315AYP	1	TUBE, Support
0200	704035	4	BOLT, 5/16-18 X 2, Carriage
0210	1759361YP	4	SADDLE, Tube, 1.25 O.D.
0220	1960044SM	4	WASHER, 5/16 Flat (.33 ID X 1.25 OD X .07 THK) BLK

Not for
Reproduction

Footnotes

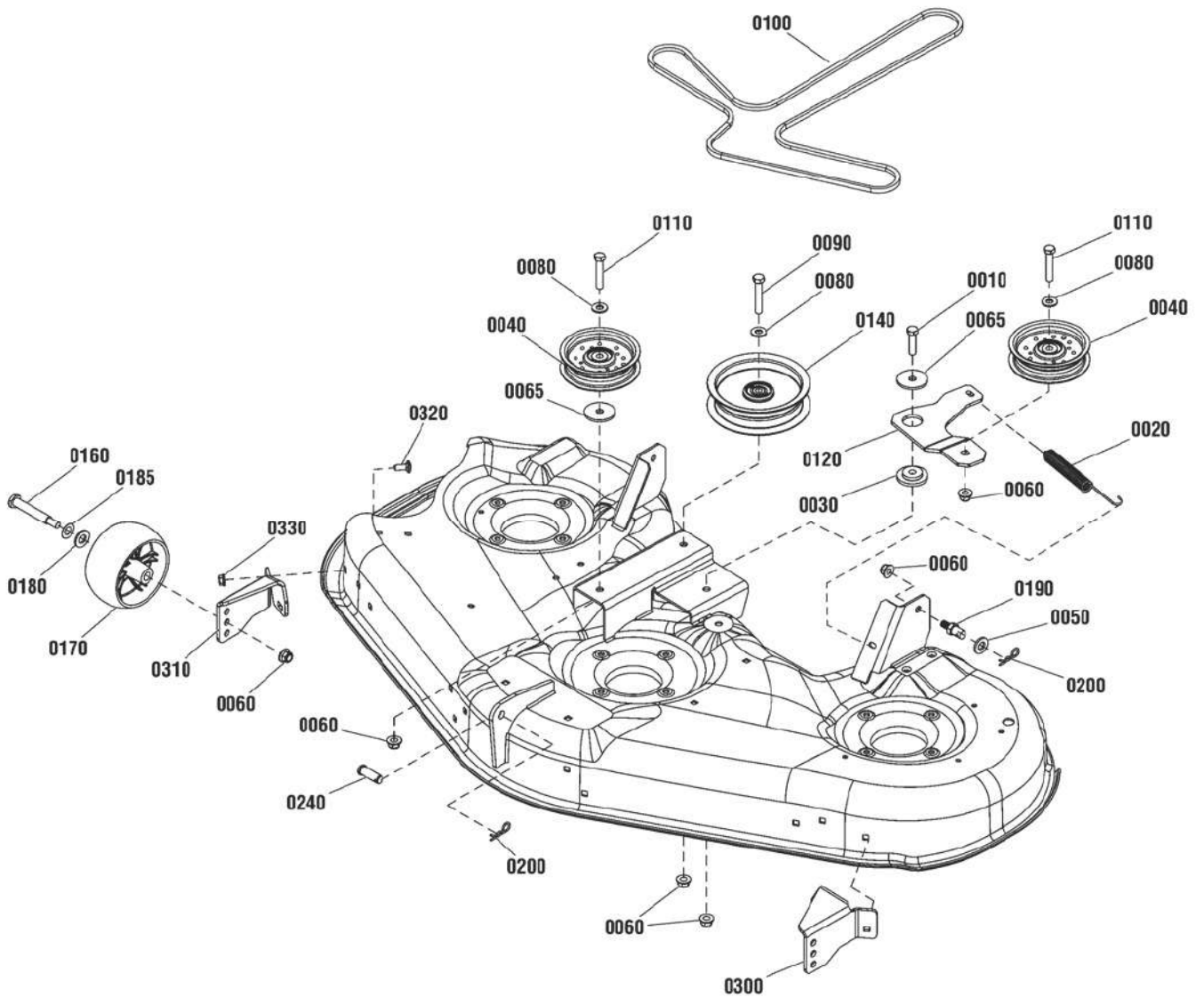
The above parts group applies to the following Mfg. Nos.:

2691359-00 - Courier

46" Mower Deck - Clutch & Support Group

2991895

NOTE: Unless noted otherwise,
use the standard hardware torque
specification chart.



The above parts group applies to the following Mfg. Nos.:

2691357-00 - Courier

46" Mower Deck - Clutch & Support Group

REF NO	PART NO.	QTY.	DESCRIPTION
0010	5025013X10SM	1	BOLT, 3/8-16 X 1-1/4, GD5, CZ
0020	1729620SM	1	SPRING, .98 OD X 7.52" LG, .11 Wire, Extension,Blk
0030	706128	1	SPACER, .390 ID, 1.750 OD, 1.125 OD Step, .380 Thk, PM
0040	1757823YP	2	PULLEY, 4.62 OD, 4" PD, .38 ID, .746 Offset, Backside Idler
0050	703853	2	WASHER, 0.50 (0.51 ID X 1.00 OD X .10 THK) Black
0060	5025394SM	8	NUT, 3/8-16, Hex Flange Nylock
0065	5025305SM	2	WASHER, .41 X 1.75 X .14
0080	703878	3	WASHER, 13/32 x 7/8 x 5/64, Flat, Zinc/Clear
0090	703872	1	SCREW, 3/8-16 X 2.250, Hex Head Cap, GR 5, Zinc/Clear
0100	1736516YP	1	V-BELT, 132", HA, 52" Mower
0110	703589	2	SCREW, 3/8-16 x 2, Hex Head Cap, GR5, Zinc/Clear
0120	1758486AYP	1	ARM, Idler, 46" ZT Mower, Black
0140	7034422SM	1	PULLEY, 5.87" OD, 5" PD, .381 ID, 1" Offset, Flat Idler
0160	1736539YP	2	BOLT, 3/8-16 X 3.41, .75" Thread, Shoulder
0170	1736896YP	2	WHEEL, Gauge, .505" ID, 5" OD, 2.58" Wide, Black Poly
0180	5025158SM	2	WASHER, 1/2" SAE
0185	0020X3MA	2	WASHER, .525" ID, .98" OD, Spring
0190	704054	2	PIN, 3/8-16 X .50, Threaded Shoulder, Zinc/Clear
0200	703300	3	PIN, Hair, 3/32 x 1-5/8, GR5, Zinc/Clear
0240	5025479YP	1	CLEVIS PIN, 1/2 X 1.36, Clevis
0300	1736074BMYP	1	BRACKET, Gauge Wheel (LH-Front; RH-Rear)
0310	1736075BMYP	1	BRACKET, Gauge Wheel (RH-Front; LH-Rear)
0320	703185	4	BOLT, Carriage 5/16C X3/4 GR5 YZ
0330	5025127SM	4	NUT, 5/16-18, Hex Serated Flange (Small)

Footnotes

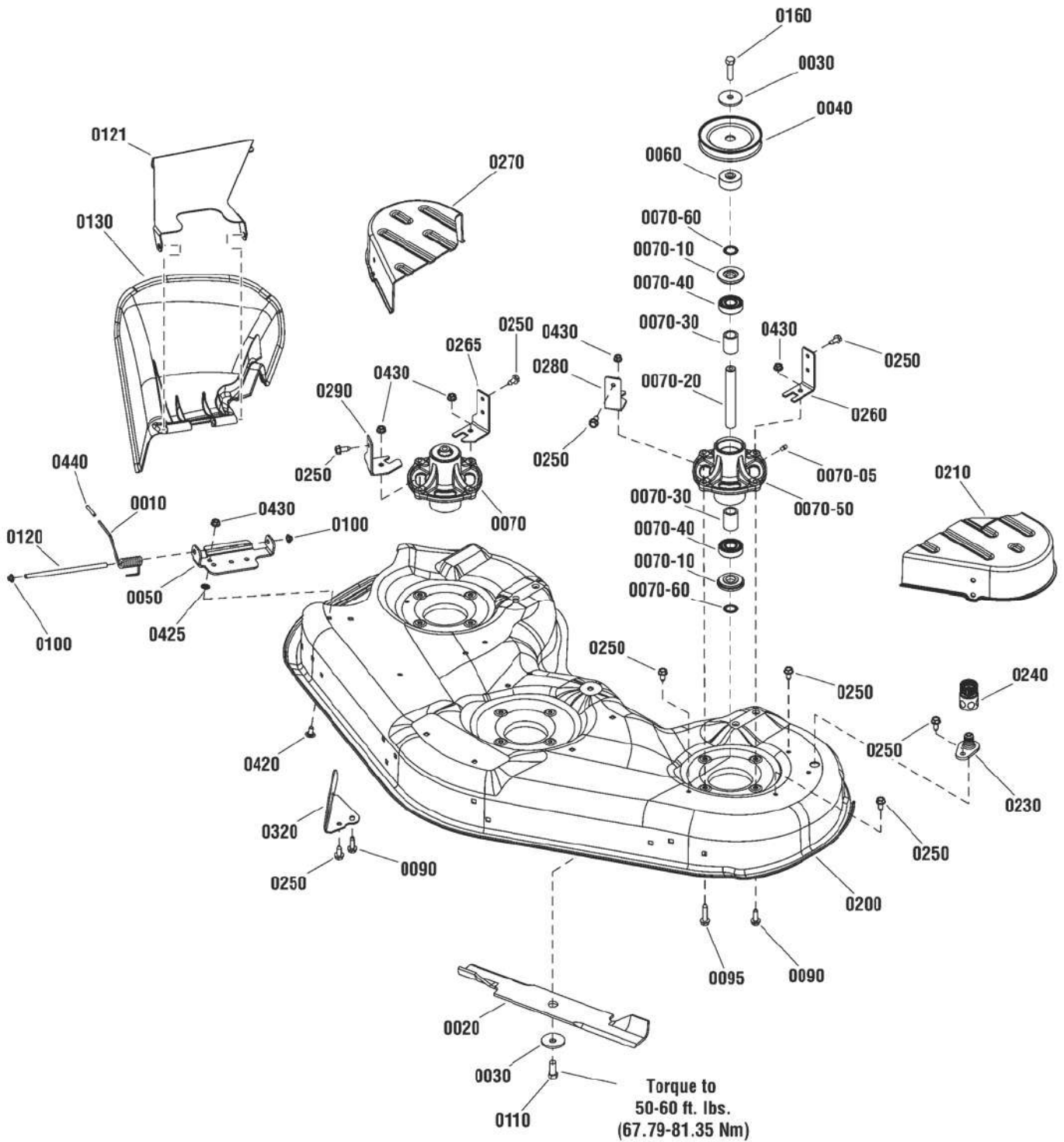
The above parts group applies to the following Mfg. Nos.:

2691357-00 - Courier

46" Mower Deck - Housing, Arbor & Blade Group

2992167

NOTE: Unless noted otherwise, use the standard hardware torque specification chart.



The above parts group applies to the following Mfg. Nos.:

2691357-00 - Courier

46" Mower Deck - Housing, Arbor & Blade Group

REF NO	PART NO.	QTY.	DESCRIPTION
0010	1759042YP	1	SPRING, Torsion
0020	1739889AYP	3	BLADE, Mower, 16.125 LG, .75 Lift, .807 Hole
0030	1656916SM	6	WASHER, .475 ID x 1.75 OD x .156 Thick Spring, Black
0040	1735686YP	3	PULLEY, Split, 4.6 OD
0050	1754868AYP	1	BRACKET, Hinge, Blk
0060	1737457YP	3	SPACER, .457 ID, 1.66 OD, Pulley, YZ
0070	7600211YP	3	KIT, Aluminum Spindle Assembly
0070-05	1704314SM	3	Fitting, Lube
0070-10	1735323YP	6	SHIELD, Arbor, 2.050 OD
0070-20	1735326YP	3	SHAFT, Spindle, 20mm DIA, 134.60mm LG
0070-30	1735328YP	6	SPACER, Bearing, .812 ID, 1.25 OD, .442 Tall, PM
0070-40	1735399YP	6	BEARING, Ball 20MM
0070-50	1735573YP	3	HOUSING, Spindle, Cast Aluminum (Machined) w/Grease Fitting
0070-60	1960766YP	6	RING, Self Locking (For 20MM Shaft)
0090	704146	7	SCREW, 5/16-18 X 1.0, Hex Washer Head Self-Tap, ZC/CL
0095	1930600SM	5	SCREW, 5/16-18 x 1.5, Hex Washer Head Taptite, Blk
0100	704028	2	PUSHNUT, 5/16, Cap, Zinc/Clear
0110	1920676SM	3	SCREW, 7/16-14 x 1 Hex Head Cap, GR 5, Black
0120	1759064	1	ROD, Deflector, 7.25" X .313 OD, 46"/52"
0121	1758935AYP	1	BRACKET, Deflector Support
0130	1687750YP	1	DEFLECTOR, Discharge, 46/52
0160	1921212SM	3	SCREW, 7/16-14X1.50, Hex Head, G5 Blk
0200	770084	1	KIT, Mower Housing - 46" ZT (Orange)
0210	1759289YP	1	COVER, Spindle, 46"/52" Mower, LH
0230	1756247YP	1	ADAPTOR, Washout Port
0240	1756246YP	1	CONNECTOR, Washout Port
0250	1664847CAYP	11	SCREW, 16-18X0.750, Hex Washer Head Tap-Tite T5
0260	1759291AYP	2	BRACKET, Arbor Cover Mount, Rear, LH, BL
0265	1759461AYP	1	BRACKET, Arbor Cover Mount, Rear, RH, BL
0270	1759290YP	1	COVER, Spindle, 46"/52" Mower, RH
0280	1759292AYP	1	BRACKET, Arbor Cover Mount, Front, LH, BL
0290	1759293AYP	1	BRACKET, Arbor Cover Mount, Front, RH, BL
0320	1737279BMYP	1	BAFFLE, Pinchoff
0420	703447	2	BOLT, 5/16-18 X .625, Carriage, GR5, Zinc/Clear
0425	703297	2	RETAINER, 5/16 X .625, Push Nut, GR 5, Zinc/Clear
0430	5025127SM	7	NUT, 5/16-18, Hex Serated Flange (Small)
0440	5023489SM	2	CAP, Protector, .120 ID

Footnotes

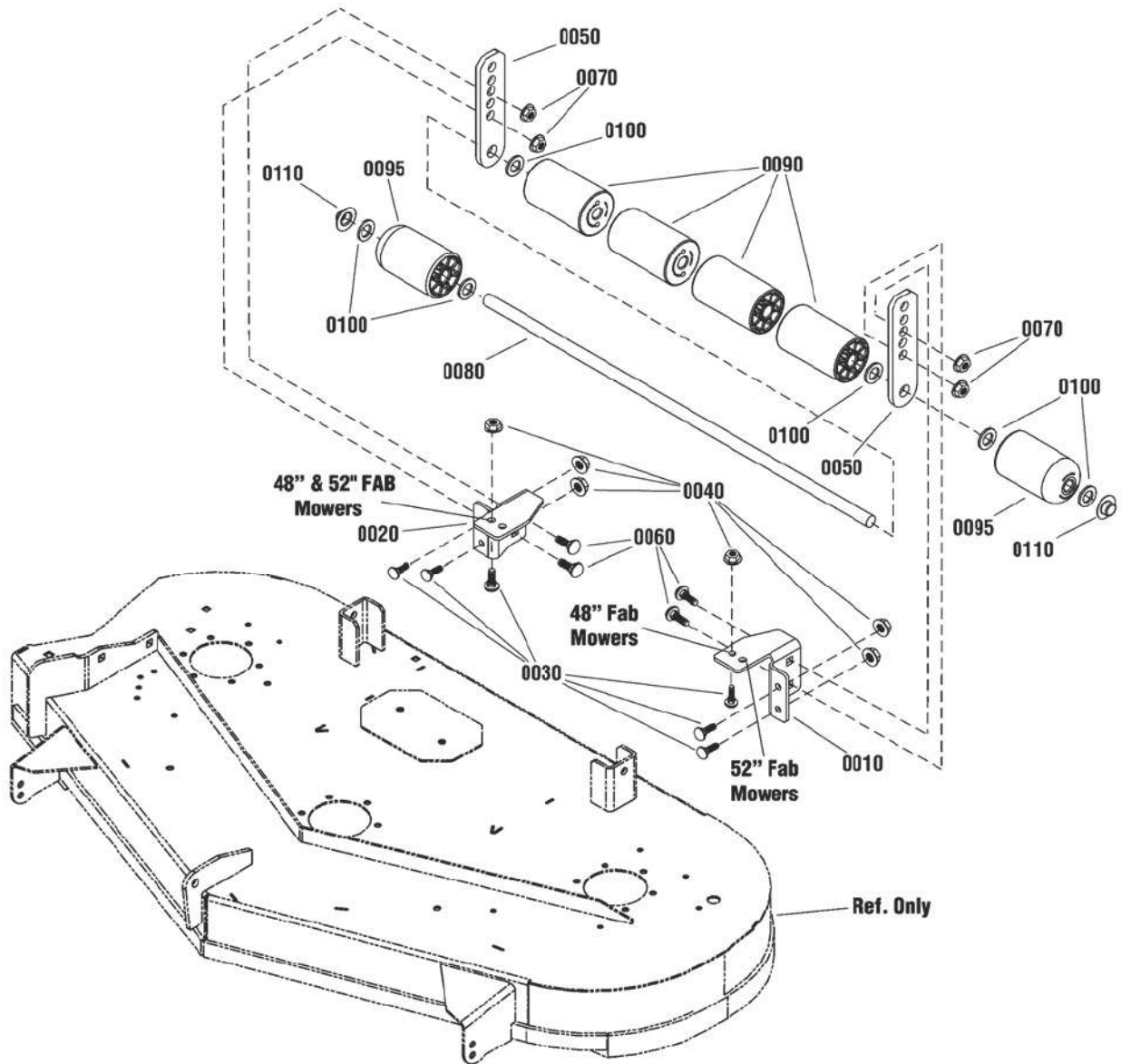
The above parts group applies to the following Mfg. Nos.:

2691357-00 - Courier

48" (122cm) & 52" (132cm) Mower Deck - Roller Group

2991866

NOTE: Unless noted otherwise,
use the standard hardware torque
specification chart.



The above parts group applies to the following Mfg. Nos.:

2691359-00 - Courier

48" (122cm) & 52" (132cm) Mower Deck - Roller Group

REF NO	PART NO.	QTY.	DESCRIPTION
0010	1758457AYP	1	MOUNT, Roller Bar, LH
0020	1758458AYP	1	MOUNT, Roller Bar, RH
0030	703185	6	BOLT, Carriage, 5/16-18 X 3/4, GR5
0040	703115	6	NUT, Nylock Flange, 5/16-18
0050	1758461AYP	2	BAR, Roller
0060	703815	4	BOLT, Carriage, 3/8-16 X 1, GR5
0070	703158	4	NUT, Hex Flange, 3/8-16
0080	1758473YP	1	SHAFT, Roller
0090	1668513SM	4	ROLLER
0095	1722036SM	2	ROLLER, Rounded
0100	703580	6	WASHER
0110	1960520SM	2	NUT, Push, 5/8

Not for
Reproduction

Footnotes

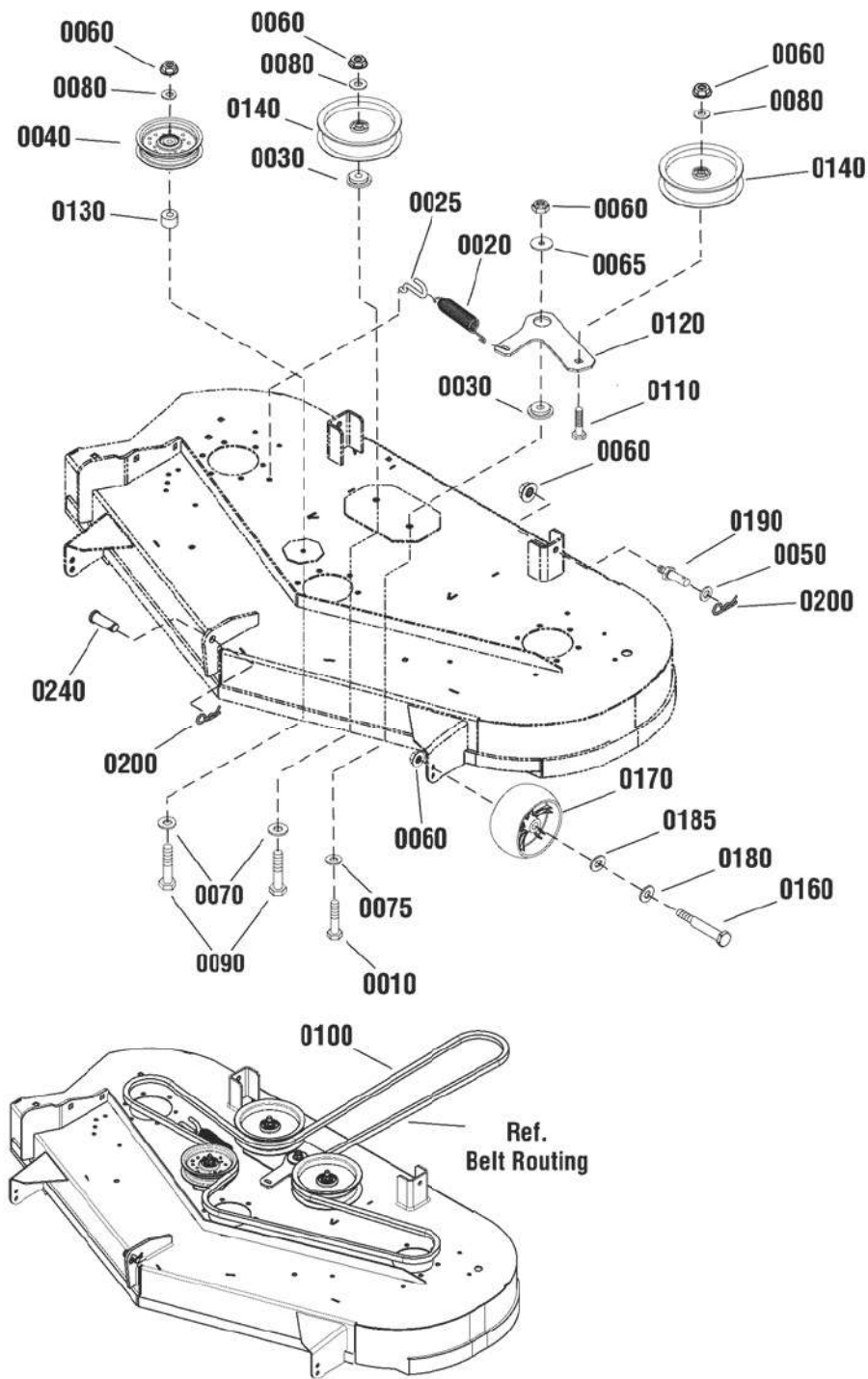
The above parts group applies to the following Mfg. Nos.:

2691359-00 - Courier

48" (122cm) Mower Deck - Clutch & Support Group

2991603

NOTE: Unless noted otherwise,
use the standard hardware torque
specification chart.



The above parts group applies to the following Mfg. Nos.:

2691359-00 - Courier

48" (122cm) Mower Deck - Clutch & Support Group

REF NO	PART NO.	QTY.	DESCRIPTION
0010	703406	1	CAPSCREW, Hex Head, 3/8-16 X 1 1/2, GR5
0020	1715772SM	1	SPRING, Extension
0025	1758170YP	1	ANCHOR, Spring
0030	706128	2	SPACER, Idler
0040	1757823YP	1	PULLEY, Idler Backside
0050	703853	2	WASHER, Special
0060	703158	8	NUT, Hex Flange, 3/8-16
0065	5025305SM	1	WASHER, .41 X 1.75 X .14
0070	703591	2	WASHER, Flat
0075	1919384SM	1	WASHER, 3/8
0080	703878	3	WASHER, Flat
0090	703133	2	CAPSCREW, Hex Head, 3/8-16 X 2 3/4, GR5
0100	1736516YP	1	V-BELT, HA
0110	7900009SM	1	BOLT, Carriage, 3/8-16 X 2-1/4, GR5
0120	1758073AYP	1	ARM, Idler
0130	1667812SM	1	SPACER, .390 ID .90 OD 0.70 Lg
0140	7034422SM	2	PULLEY, Flat Idler
0160	1736539YP	2	BOLT, Shoulder, 3/8-16 X 3.41
0170	1736896YP	2	WHEEL, Gauge
0180	5025158SM	2	WASHER, 1/2
0185	0020X3MA	2	WASHER, Spring
0190	704054	2	PIN, Threaded Shoulder, 3/8-16 X 11/16
0200	403162MA	3	PIN, Hair, 3/32
0240	5025479YP	1	PIN, Clevis, 1/2 X 1 23/64

Not for
Reproduction

Footnotes

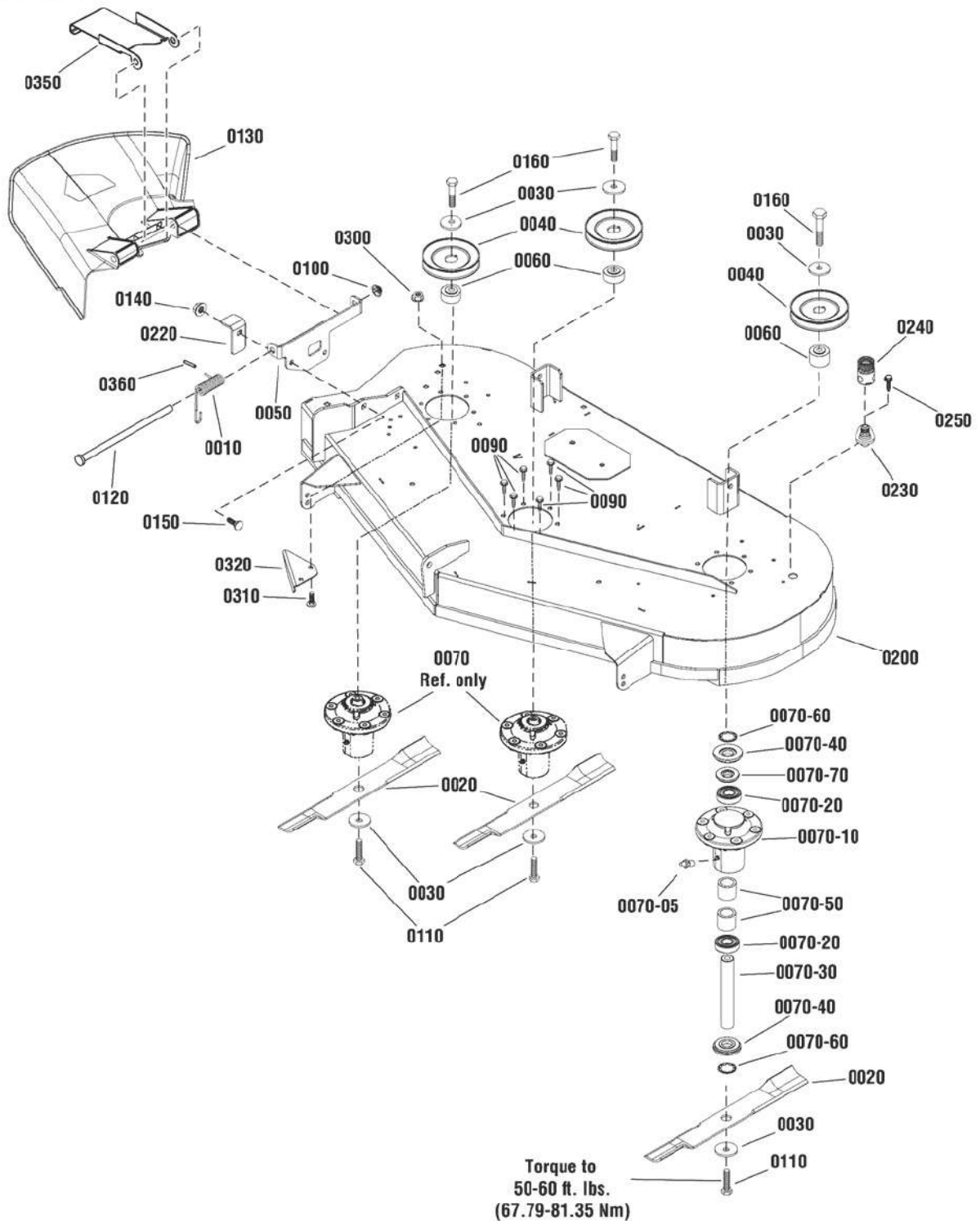
The above parts group applies to the following Mfg. Nos.:

2691359-00 - Courier

48" Mower Deck - Housing, Arbors & Blade Group, ZT - EU

2992174

NOTE: Unless noted otherwise, use the standard hardware torque specification chart.



The above parts group applies to the following Mfg. Nos.:

2691359-00 - Courier

48" Mower Deck - Housing, Arbors & Blade Group, ZT - EU

REF NO	PART NO.	QTY.	DESCRIPTION
0010	7035813SM	1	SPRING, Torsion, Side Discharge
0020	1759055YP	3	BLADE, 16.5" (122cm) LG, .807 ID, .75" Lift, 48" MWR
0030	1656916SM	6	WASHER, Spring, .475 ID x 1.75 OD x .156 Thick, Black
0040	1732951SM	3	PULLEY, 4.60" OD, 1.0" ID, .87" WD, BLK
0050	1758982BMYP	1	BRACKET, Deflector
0060	706362	3	SPACER, HUB, .75 HI, .457 ID
0070	----	3	ARBOR ASSEMBLY (Not a Part Sale Item)
0070-05	1704314SM	3	FITTING, Lube
0070-10	1755437YP	3	HOUSING, w/Lube Fitting
0070-20	1735399YP	6	BEARING, Ball 20MM
0070-30	1735326YP	3	SHAFT, Spindle, 20mm DIA, 134.60mm LG
0070-40	1735323YP	6	SHIELD, Arbor, 2-1/16 OD
0070-50	1735328YP	6	SPACER, Bearing, .812 ID, 1.25 OD, .442 Tall, PM
0070-60	1960766YP	6	RING, Self Locking (For 20MM Shaft)
0070-70	7106224YP	3	BEARING, Seal
0090	704146	18	SCREW, 5/16-18 X 1.0, Hex Washer Head Self-Tap, ZC/CL
0100	703179	1	PUSHNUT, .500 DIA, Cap Type, Zinc/Clear
0110	1920676SM	3	SCREW, 7/16-14 x 1 Hex Head Cap, GR 5, Black
0120	7104640YP	1	ROD, .5" OD, 9.75" LG, Pivot, Chute, Discharge
0130	7104733YP	1	CHUTE, Discharge, Side, 38 / 42
0140	5025128SM	2	NUT, 3/8-16, Hex Serated Flange
0150	703815	2	BOLT, 3/8-16 X 1.00, Carriage, SH NK, GR 5, Zinc/Clear
0160	1921212SM	3	SCREW, 7/16-14X1.50, Hex Head, G5 Blk
0200	1687841YP	1	WELDMENT, Mower - 48" FAB ZT (Orange)
0220	1758593BMYP	1	PROP, Deflector
0230	1756247YP	1	ADAPTOR, Washout Port
0240	1756246YP	1	CONNECTOR, Washout Port 46/52" Black Poly
0250	703228	9	SCREW, 16-18X0.750, Hex Washer Head Tap-Tite T5
0300	703115	2	NUT, 5/16-18, Flange Nylock, GR F, Zinc/Clear
0310	703185	2	BOLT, 5/16-18X3/4 GR5, Carriage, YZ
0320	706368	1	BAFFLE, Pinchoff, 48" Fab Deck, BLK
0350	1759986BMYP	1	BRACKET, Deflector Support, PECO (Black)
0360	5023489SM	1	CAP, Protector, .120 ID

Footnotes

The above parts group applies to the following Mfg. Nos.:

2691359-00 - Courier

Not for
Reproduction

Not for
Reproduction

Not for
Reproduction

Hardware Identification & Torque Specifications

Torque Specification Chart FOR STANDARD METRIC MACHINE HARDWARE (Tolerance ± 20%)								
Property Class	5.6 Class 5.6		8.8 Class 8.8		10.9 Class 10.9		12.9 Class 12.9	
	in/lbs ft/lbs	Nm.	in/lbs ft/lbs	Nm.	in/lbs ft/lbs	Nm.	in/lbs ft/lbs	Nm.
M3	5.88	.56	13.44	1.28	19.2	1.80	22.92	2.15
M4	13.44	1.28	30.72	2.90	43.44	4.10	52.56	4.95
M5	26.4	2.50	60.96	5.75	5.97	8.10	7.15	9.7
M6	44.64	4.3	7.3	9.9	10.3	14	12.1	16.5
M7	5.2	7.1	12.1	16.5	16.9	23	19.9	27
M8	7.7	10.5	17.7	24	25	34	29	40
M10	15	21	35	48	50	67	59	81
M12	26	36	61	83	86.2	117	103	140
M14	42	58	101	132	136	185	162	220
M16	64	88	147	200	210	285	250	340
M18	89	121	202	275	287	390	346	470
M20	126	171	290	390	405	550	486	660
M22	169	230	390	530	559	745	656	890
M24	217	295	497	375	708	960	840	1140
M27	320	435	733	995	1032	1400	1239	1680
M30	435	590	995	1350	1401	1900	1681	2280
M33	590	800	1349	1830	1902	2580	2278	3090
M36	759	1030	1740	2360	2441	3310	2935	3980
M39	988	1340	2249	3050	3163	4290	3798	5150

Torque Specification Chart FOR STANDARD MACHINE HARDWARE (Tolerance ± 20%)						
Hardware Grade	No Marks SAE Grade 2		SAE Grade 5		SAE Grade 8	
	in/lbs ft/lbs	Nm.	in/lbs ft/lbs	Nm.	in/lbs ft/lbs	Nm.
8-32	19	2.1	30	3.4	41	4.6
8-36	20	2.3	31	3.5	43	4.9
10-24	27	3.1	43	4.9	60	6.8
10-32	31	3.5	49	5.5	68	7.7
1/4-20	66	7.6	8	10.9	12	16.3
1/4-28	76	8.6	10	13.6	14	19.0
5/16-18	11	15.0	17	23.1	25	34.0
5/16-24	12	16.3	19	25.8	29	34.0
3/8-16	20	27.2	30	40.8	45	61.2
3/8-24	23	31.3	35	47.6	50	68.0
7/16-14	30	40.8	50	68.0	70	95.2
7/16-20	35	47.6	55	74.8	80	108.8
1/2-13	50	68.0	75	102.0	110	149.6
1/2-20	55	74.8	90	122.4	120	163.2
9/16-12	65	88.4	110	149.6	150	204.0
9/16-18	75	102.0	120	163.2	170	231.2
5/8-11	90	122.4	150	204.0	220	299.2
5/8-18	100	136	180	244.8	240	326.4
3/4-10	160	217.6	260	353.6	386	525.0
3/4-16	180	244.8	300	408.0	420	571.2
7/8-9	140	190.4	400	544.0	600	816.0
7/8-14	155	210.8	440	598.4	660	897.6
1-8	220	299.2	580	788.8	900	1,244.0
1-12	240	326.4	640	870.4	1,000	1,360.0

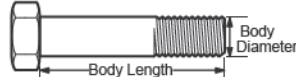
The guides and ruler furnished below are designed to help you select the appropriate hardware.



Nut, M8

Thread Diameter (mm)
Inside Diameter (in) Threads per inch

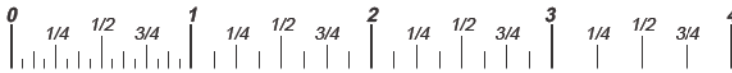
Nut, 1/2-16



Screw, M8- 1.25 x 25

Thread Diameter (mm) Distance between threads (mm) Body Length (mm)
Body Diameter Threads per inch Body Length (in)

Screw, 1/2- 16 x 2



Standard Hardware Sizing

When a washer or nut is identified as 1/2" (M8), this is the *Nominal size*, meaning the *inside diameter* is 1/2 inch (8mm metric thread diameter); if a second number is present it represents the *threads per inch* (distance between threads).

When bolt or capscrew is identified as 1/2 - 16 x 2" (M8 - 1.25 x 50), this means the *Nominal size*, or body diameter is 1/2 inch (8mm metric thread diameter), the second number, 16, represents the *threads per inch*, (1.25 thread diameter). The final number is the body length of the bolt or screw, 2 inches (50mm).

NOTES

- These torque values are to be used for all hardware excluding: locknuts, self-tapping screws, thread forming screws, sheet metal screws and socket head setscrews.
- Recommended seating torque values for locknuts:
 - for prevailing torque locknuts - use 65% of grade 5 torques.
 - for flange whizlock nuts and screws - use 135% of grade 5 torques.
- Unless otherwise noted on assembly drawings, all torque values must meet this specification.

Common Hardware Types

Hex Head Capscrew



Washer

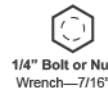
Lockwasher

Carriage Bolt



Hex Nut

Wrench & Fastener Size Guide



1/4" Bolt or Nut
Wrench—7/16"



5/16" Bolt or Nut
Wrench—1/2"



3/8" Bolt or Nut
Wrench—9/16"



7/16" Bolt or Nut
Wrench (Bolt)—5/8"
Wrench (Nut)—11/16"



1/2" Bolt or Nut
Wrench—3/4"

M6 Bolt or Nut
Wrench—10mm

M8 Bolt or Nut
Wrench—13mm

M10 Bolt or Nut
Wrench—17mm

M12 Bolt or Nut
Wrench—19mm

M14 Bolt or Nut
Wrench—22mm

Not for
Reproduction

**IT IS THE POLICY OF BRIGGS & STRATTON CORP. TO IMPROVE ITS PRODUCTS
WHENEVER IT IS POSSIBLE AND PRACTICAL TO DO SO. WE RESERVE THE RIGHT TO
MAKE CHANGES OR ADD IMPROVEMENTS AT ANY TIME WITHOUT INCURRING ANY
OBLIGATION TO MAKE SUCH CHANGES ON PRODUCTS.**

Briggs & Stratton Yard Power Products Group

3515 N. 124 Street / PO Box 702
Wauwatosa, WI 53222 USA

www.simplicitymfg.com

© Copyright 2016 by Briggs & Stratton Corporation
Milwaukee, WI, USA. All rights reserved

