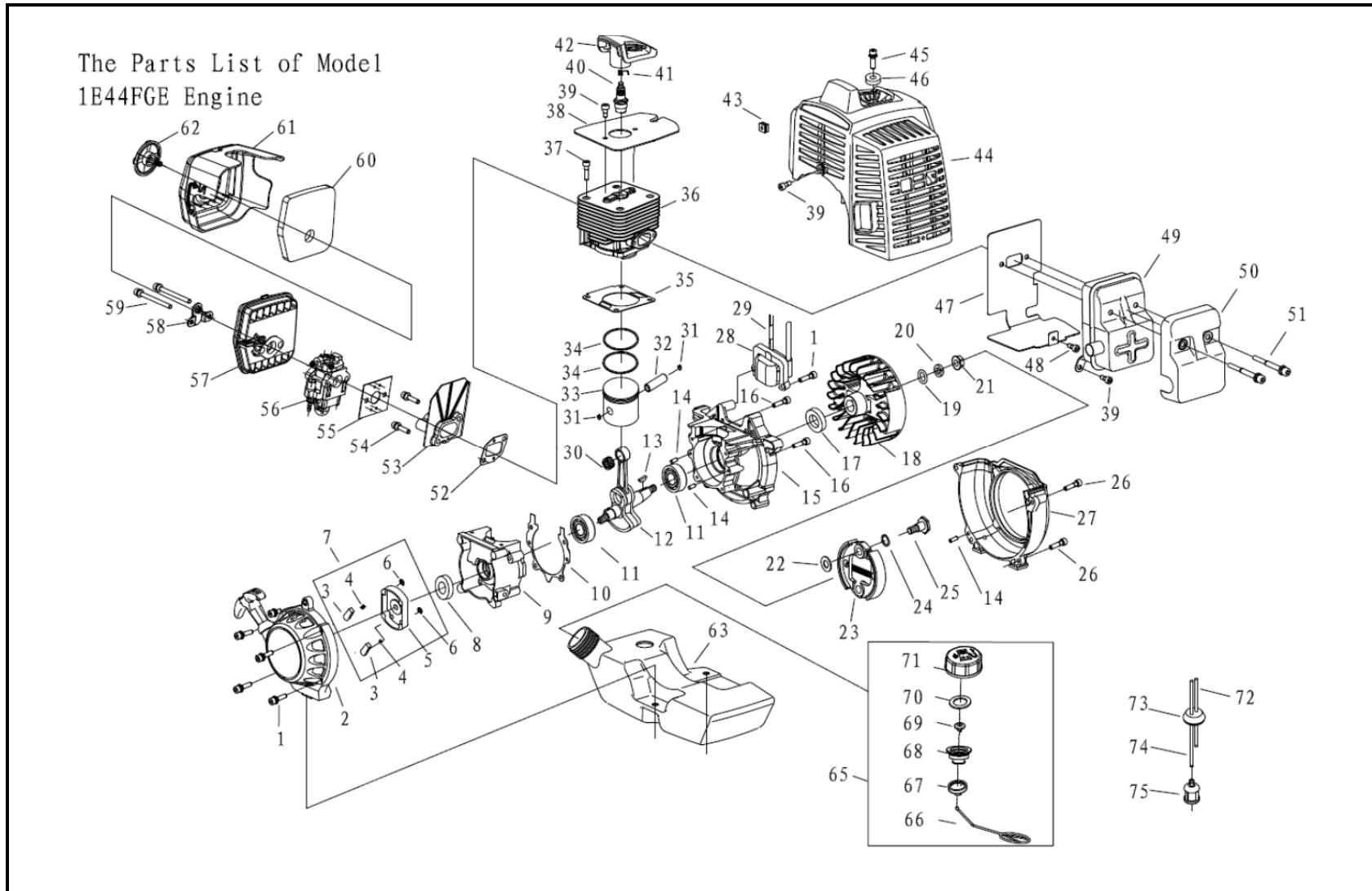


DESBROZADOR BG520A-E

MUY IMPORTANTE

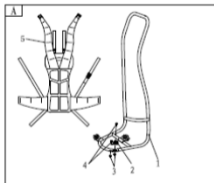
Al indicar el número de figura indique por favor a que tabla pertenece

TABLA 1

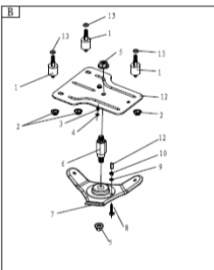


Transmisión-Manillar BG520A-E
TABLA 2
BRUSHCUTTER MACHINE SPARE PARTS LIST BG520A-E

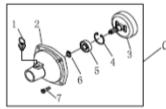
1/4



NO.	PART NO.	PART NAME	QTY.
A			
1	BG34A.1	Shoulder Frame COMP.	1
2	BG330H.1-1	Spring	3
3	GB/T6177.1	Nut M6	6
4	GB/T9074.13	Screw M6 × 16	6
5	BG400.8	Shoulder Belt Ass'y	1



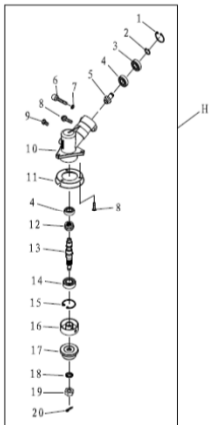
NO.	PART NO.	PART NAME	QTY.
B			
1	BG63.8A	Cushion Rubber Comp.	3
2	GB/T6183.1	Nut M5	3
3	GB/T9074.4	Bolt M5×35	1
4	GB/T6177	Nut M5	1
5	GB/T6177	Nut M10	2
6	BG63.1-2	Pillar	1
7	BG40A.7.1	Down Base Comp.	1
8	GB/T9074.4	Screw M6 × 20	1
9	GB/T97.1	Washer 6	1
10	GB/T6170	Nut M6	1
11	BG430.1.3-1	Pipe	1
12	BG63.1-1	Below Support	1
13	GB/T96.1	Washer 5	3



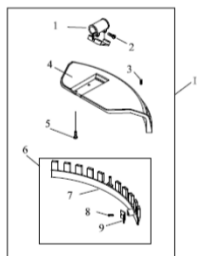
NO.	PART NO.	PART NAME	QTY.
C			
1	BG430.2.1	Clutch Comp.	1
2	BG305.2.1	Pin	1
2	BG430.2.1-1	Clutch Case	1
3	BG-328.8.1A	Clutch Drum Comp.	1
4	GB/T893.1	Stop Ring 35	1
5	GB/T276	Bearing 6202-2RS/P6	1
6	GB/T894.1	Stop Ring 15	1
7	GB70.1+GB93+GB97	Screw M6×20	4

BRUSHCUTTER MACHINE SPARE PARTS LIST BG520A-E

3/4



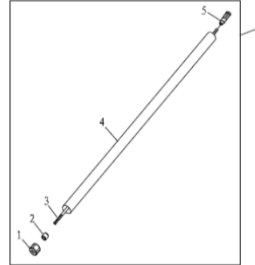
NO.	PART NO.	PART NAME	QTY.
H			
1	BG305.12.4	Gear Case Ass'y	1
1	GB/T893.2	Stop Ring 26	1
2	GB/T894.1	Stop Ring 10	1
3	GB/T276	Bearing 6000-2RS/P6	1
4	GB/T276	Bearing 6000/P6	2
5	CG305F.1-2	Pinion	1
6	GB/T70.1	Screw M6×20	1
7	GB/T93	Washer 6	1
8	GB/T9074.4	Screw M5×12	4
9	GB/T9074.11	Bolt M6×12	1
10	BG305.12.4-4	Gear Case	1
11	BG330H.7.3-1	Safety Guard	1
12	BG-328.9.5-2	Gear	1
13	CG305F.1-1	Gear Shaft	1
14	GB/T276	Bearing 6002-2RS/P6	1
15	GB/T893.2	Stop Ring 32	1
16	BC34.3-1	Holder A	1
17	CG305F.1-3	Holder B	1
18	GB/T862.1	Washer 10	1
19	CG305F.1-4	Left Nut	1
20	GB/T91	Pin 2×16	1



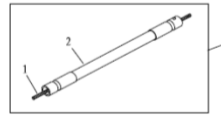
NO.	PART NO.	PART NAME	QTY.
I			
1	BG430.2.6	Guard Ass'y	1
1	BG430-JBC-1	Bracket	1
2	GB/T9074.13	Screw M5×30	2
3	GB/T845	Screw ST4.2×16	1
4	CG420.7.1-1	Safety Guard	1
5	1E40F-5A-CE-4	Screw M5X16	4
6	CG420.7.1.1	Guard Ass'y	1
7	CG420.7.1.1-1	Guard	1
8	GB/T845	Screw ST4.2×16	2
9	CG420.7.1.1-2A	Blade	1

BRUSHCUTTER MACHINE SPARE PARTS LIST BG520A-E

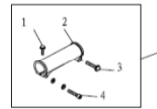
2/4



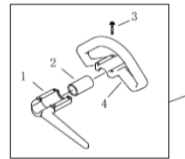
NO.	PART NO.	PART NAME	QTY.
D			
1	BG415-CE.1	Pipe Comp.	1
1	BG-328.9.4-5	Rubber Cover	6
2	BG-328.9.4-4	Oil-bearing	6
3	BG305.1.1	Drive Shaft	1
4	BG415-CE.1-1	Pipe	1
5	BG-328.9.4-1	Adapter Comp.	1



NO.	PART NO.	PART NAME	QTY.
E			
1	BG305.1	Flexible Liner Comp.	1
1	BG305.1.2	Flexible Pipe COMP.	1
2	BG305.1.1	Flexible Shaft Comp.	1



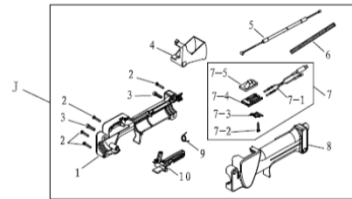
NO.	PART NO.	PART NAME	QTY.
F			
1	GB70.1+GB93+GB97	Screw M5×12	1
2	BG305D-2	Joint Pipe	1
3	GB70.1+GB93+GB97	Screw M5×30	1
4	GB70.1+GB93+GB97	Bolt M5×20	1



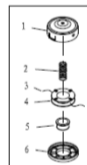
NO.	PART NO.	PART NAME	QTY.
G			
1	CG245Q.11	Handle Comp.	1
1	CG245Q.11.1	Handle Cover	1
2	BG330-CE.1-2-2012CE	Rubber Cover	1
3	CG245Q.11-1	Handle	1
4	BC36.4-2+GB93+GB97.1	Screw M5×35	4

BRUSHCUTTER MACHINE SPARE PARTS LIST BG520A-E

4/4



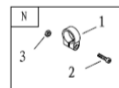
NO.	PART NO.	PART NAME	QTY.	NO.	PART NO.	PART NAME	QTY.
J	BG520A.2	Lever Ass'y	1	7-1	BG520A.2.2-1	Stop Line	1
1	SG230.1-1	Box,Right	1	7-2	GB/T845	Screw ST2.9×13	1
2	GB/T845	Screw ST3.5×19	5	7-3	SG230.1.2-1	Touch Reed	1
3	GB/T70.1	Screw M5×18	2	7-4	SG230.1.2-2	Guide Seat	1
4	SG230.1-5	Throttle Lever	1	7-5	SG230.1.2-3	Stop Switch	1
5	BG431.4.1B	Cable Comp.	1	8	SG230.1-2	Box,Left	1
6	BG520A.2-1	Tube	1	9	SG230.1-6	Spring	1
7	BG520A.2.2	Stop Button comp.	1	10	SG230.1-4	Safety Lever	1



NO.	PART NO.	PART NAME	QTY.
K			
1	CG520-HS.1	Nylon Cutter Head	1
1	CG520-HS.1.1	Case	1
2	CG520-HL.17-3	Spring	1
3		Cord φ 2.5 × 2100	2
4	CG520-HL.17-2	Cord Holder	1
5	CG520-HL.17-4	Cover	1
6	CG520-HL.17-1	Cover	1



NO.	PART NO.	PART NAME	QTY.
L			
1	CG420-2	Blade	1
M	BG415-1B	Wire Clamp Band	2



NO.	PART NO.	PART NAME	QTY.
N			
1	CG260.3-1	Clamp	2
2	CG260.3-2-2012CE	Screw M5×18	1
3	GB/T889.1	Nut M5	1