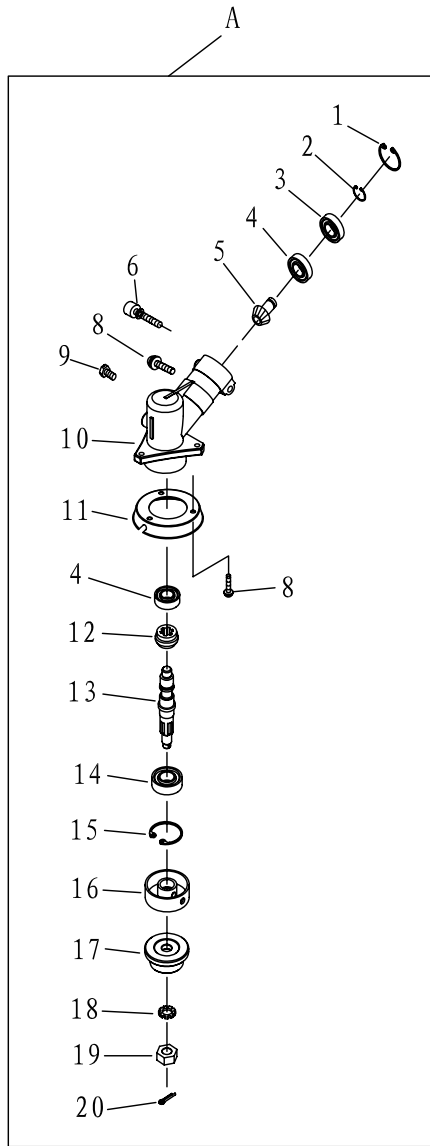
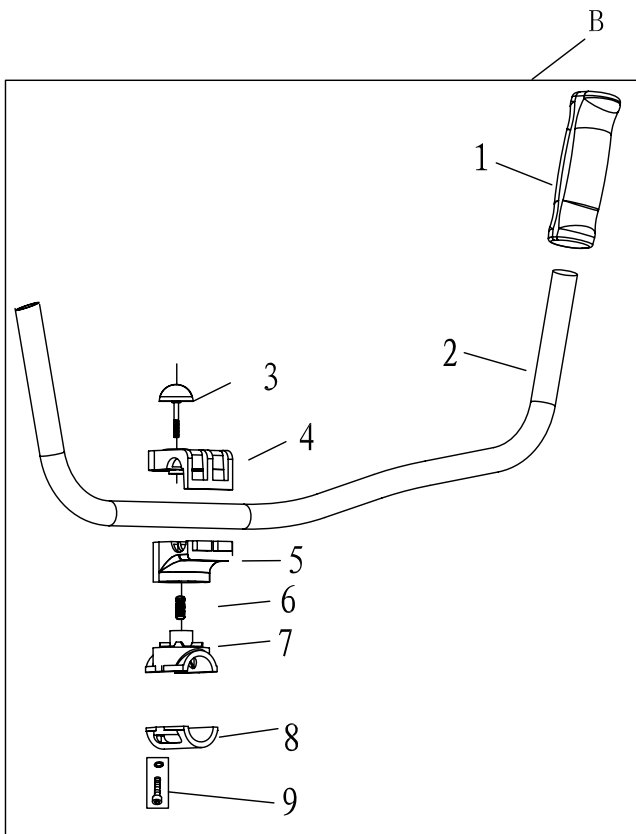


# BRUSHCUTTER MACHINE SPARE PARTS LIST CG330-E/CG430-E

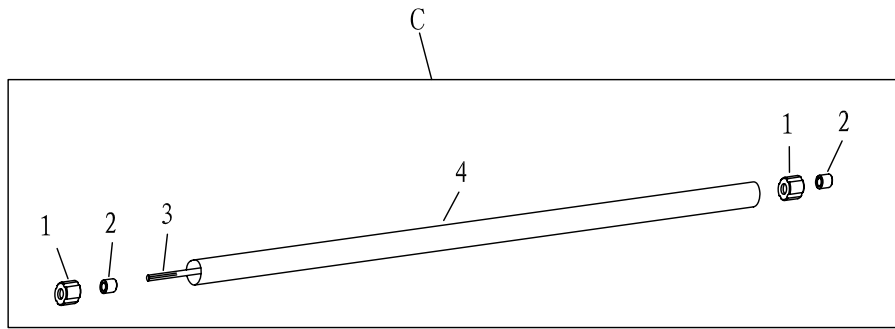


| NO. | PART NO.       | PART NAME           | QTY. |
|-----|----------------|---------------------|------|
| A   | CG430-CE. 3    | Gear Case Ass'y     |      |
| 1   | GB/T893. 2     | Stop Ring 26        | 1    |
| 2   | GB/T894. 1     | Stop Ring 10        | 1    |
| 3   | GB/T276        | Bearing 6000-2RS/P6 | 1    |
| 4   | GB/T276        | Bearing 6000/P6     | 2    |
| 5   | CG415D. 6-4    | Pinion              | 1    |
| 6   | GB/T70+GB/T93  | Screw M5×20         | 1    |
| 7   |                |                     |      |
| 8   | GB/T9074. 4    | Screw M5×12         | 4    |
| 9   | GB/T9074. 11   | Bolt M5×12          | 1    |
| 10  | CG415D. 6-2    | Gear Case           | 1    |
| 11  | BG305. 12. 4-9 | Safety Guard        | 1    |
| 12  | BG-328. 9. 5-2 | Gear                | 1    |
| 13  | CG305F. 1-1    | Gear Shaft          | 1    |
| 14  | GB/T276        | Bearing 6002-2RS/P6 | 1    |
| 15  | GB/T893. 2     | Stop Ring 32        | 1    |
| 16  | BG305. 12. 4-5 | Holder A            | 1    |
| 17  | CG305F. 1-3    | Holder B            | 1    |
| 18  | GB/T862. 1     | Washer 10           | 1    |
| 19  | CG305F. 1-4    | Left Nut            | 1    |
| 20  | GB/T91         | Pin 2×16            | 1    |

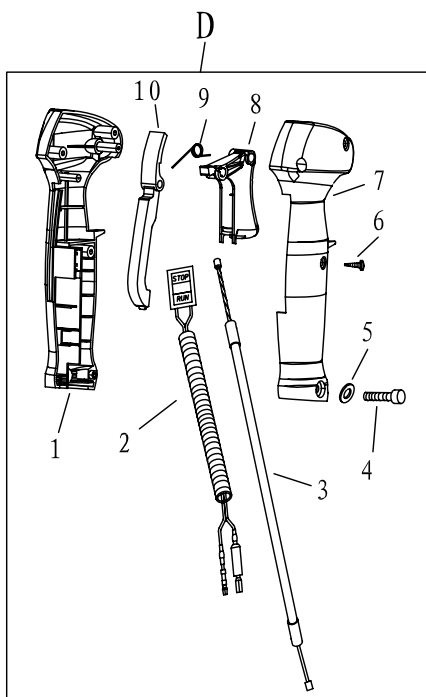


| NO. | PART NO.       | PART NAME     | QTY. |
|-----|----------------|---------------|------|
| B   |                |               |      |
| 1   | BC36-8         | Rubber Ringer | 1    |
| 2   | BC36-6         | HANDGRIP      | 1    |
| 3   | BC36. 2        | Lock Bolt     | 1    |
| 4   | BC36-5         | CAP, UPPER    | 1    |
| 5   | BC36-3         | BRACKET       | 1    |
| 6   | BC36-4         | Spring        | 1    |
| 7   | BC36-2         | Eddy Seat     | 1    |
| 8   | BC36-1         | CAP, Lower    | 1    |
| 9   | BC36. 4-2+GB93 | Screw M5*20   | 2    |
|     |                |               |      |

# BRUSHCUTTER MACHINE SPARE PARTS LIST CG330-E/CG430-E



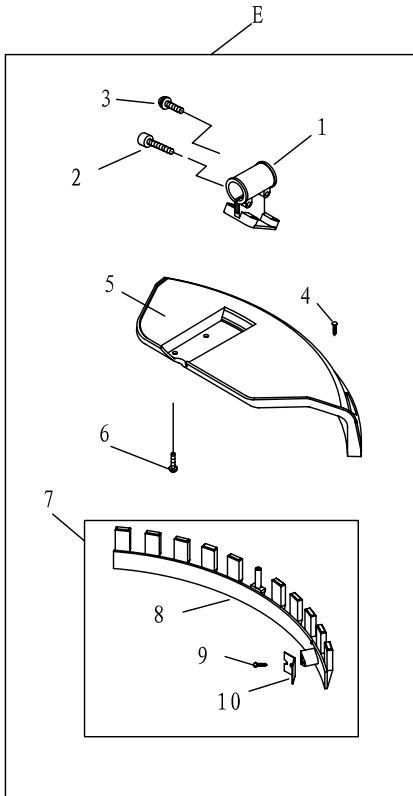
| NO. | PART NO.       | PART NAME    | QTY. |
|-----|----------------|--------------|------|
| C   |                | Pipe Comp.   | 1    |
| 1   | CG415D. 4-2    | Rubber Cover | 6    |
| 2   | BG-328. 9. 4-4 | Oil-bearing  | 6    |
| 3   | CG420. 2-3     | Drive Shaft  | 1    |
| 4   | CG430H. 2-2C   | Pipe         | 1    |



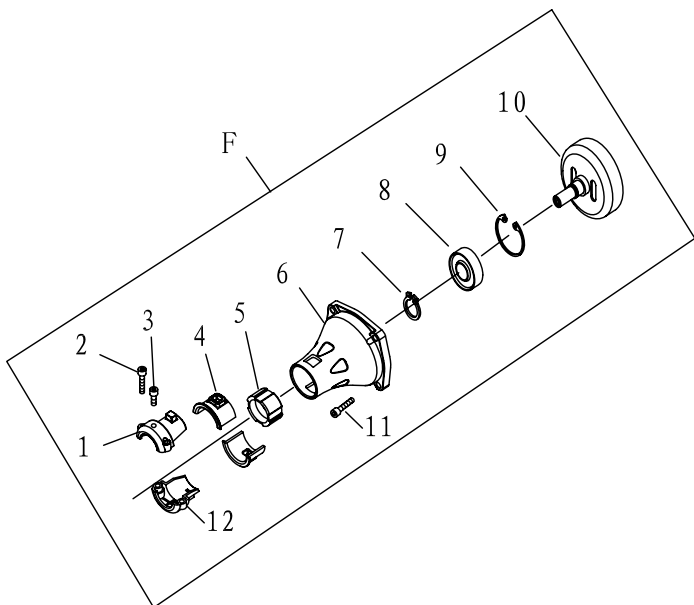
| NO. | PART NO.   | PART NAME         | QTY. |
|-----|------------|-------------------|------|
| D   | BC36. 3    | Lever Ass'y       |      |
| 1   | BC36. 3. 3 | Box, Left         | 1    |
| 2   | BC36. 3. 1 | Stop Button Comp. | 1    |
| 3   | BC36. 3. 2 | Cable Comp.       | 1    |
| 4   | GB/T818    | BOLT M5*30        | 1    |
| 5   | GB/T848    | WASHER 5          | 1    |
| 6   | GB/T845    | BOLT ST3. 5*13    | 4    |
| 7   | BC36. 3-1  | Box, Right        | 1    |
| 8   | BC36. 3-6  | Handgrip          | 1    |
| 9   | BC36. 3-5  | Spring            | 1    |
| 10  | BC36. 3-3  | HANDGRIP          | 1    |

# BRUSHCUTTER MACHINE SPARE PARTS LIST CG330-E/CG430-E

3/4

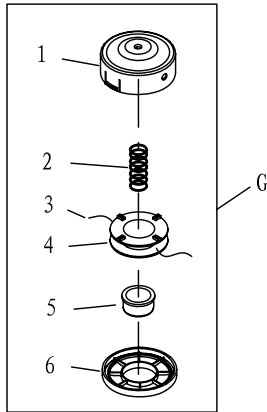


| NO. | PART NO.          | PART NAME       | QTY. |
|-----|-------------------|-----------------|------|
| E   | BG430. 2. 6       | Guard Ass'y     |      |
| 1   | CG420-JCB. 1      | Bracket         | 1    |
| 2   | GB/T9074. 13      | Screw M5×30     | 2    |
| 3   | GB/T9074. 4       | Screw M5×12     | 1    |
| 4   | GB/T845           | Screw ST4. 2×16 | 1    |
| 5   | CG420. 7. 1-1     | Safety Guard    | 1    |
| 6   | 1E40F-5A-CE-4     | Screw M5X16     | 4    |
| 7   | CG420. 7. 1. 1    | Guard Ass'y     | 1    |
| 8   | CG420. 7. 1. 1-1  | Guard           | 1    |
| 9   | GB/T845           | Screw ST4. 2×16 | 2    |
| 10  | CG420. 7. 1. 1-2A | Blade           | 1    |

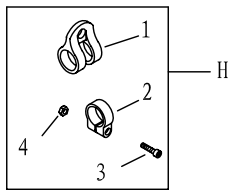


| NO. | PART NO.         | PART NAME           | QTY. |
|-----|------------------|---------------------|------|
| F   | CG430H. 1        | Clutch Comp.        | 1    |
| 1   | CG430H. 1-1      | Clamp A             | 1    |
| 2   | GB/T70+GB93+GB97 | Screw M5×20         | 2    |
| 3   | GB/T70. 1        | Screw M5×10         | 1    |
| 4   | CG430H. 1-3      | Rubber Cover A      | 2    |
| 5   | CG430H. 1-4      | Rubber Cover B      | 1    |
| 6   | CG430H. 1-5      | Linker              | 1    |
| 7   | GB/T894. 1       | Stop Ring 15        | 1    |
| 8   | GB/T276          | Bearing 6202-2RZ/P6 | 1    |
| 9   | GB/T893. 1       | Stop Ring 35        | 1    |
| 10  | CG415D. 1. 1A    | CLUTCH DRUM COMP.   | 1    |
| 11  | GB70+GB93+GB97   | Screw M6×20         | 4    |
| 12  | CG430H. 1-2      | Clamp B             | 1    |

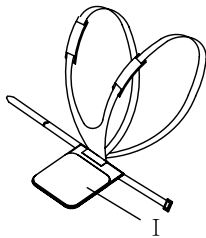
# BRUSHCUTTER MACHINE SPARE PARTS LIST CG330-E/CG430-E



| NO. | PART NO.       | PART NAME                   | QTY. |
|-----|----------------|-----------------------------|------|
| G   | CG520-HL. 17   | Nylon Cutter Head           |      |
| 1   | CG520-HL. 17.1 | Case                        | 1    |
| 2   | CG520-HL. 17-3 | Spring                      | 1    |
| 3   |                | Cord $\phi 2.5 \times 2100$ | 2    |
| 4   | CG520-HL. 17-2 | Cord Holder                 | 1    |
| 5   | CG520-HL. 17-4 | Cover                       | 1    |
| 6   | CG520-HL. 17-1 | Cover                       | 1    |



| NO. | PART NO.    | PART NAME            | QTY. |
|-----|-------------|----------------------|------|
| H   | CG420. 3    | Holder Ass'y         |      |
| 1   | CG420. 3. 1 | Harness Clamp        | 1    |
| 2   | CG420. 3-1  | Clamp                | 1    |
| 3   | GB/T70. 1   | Screw M5 $\times$ 20 | 1    |
| 4   | GB/T889. 1  | Nut M5               | 1    |



| NO. | PART NO.     | PART NAME       | QTY. |
|-----|--------------|-----------------|------|
| I   | CG260A-CE. 1 | Harness Ass'y   | 1    |
| J   | BG415-1B     | Wire Clamp Band | 2    |

