

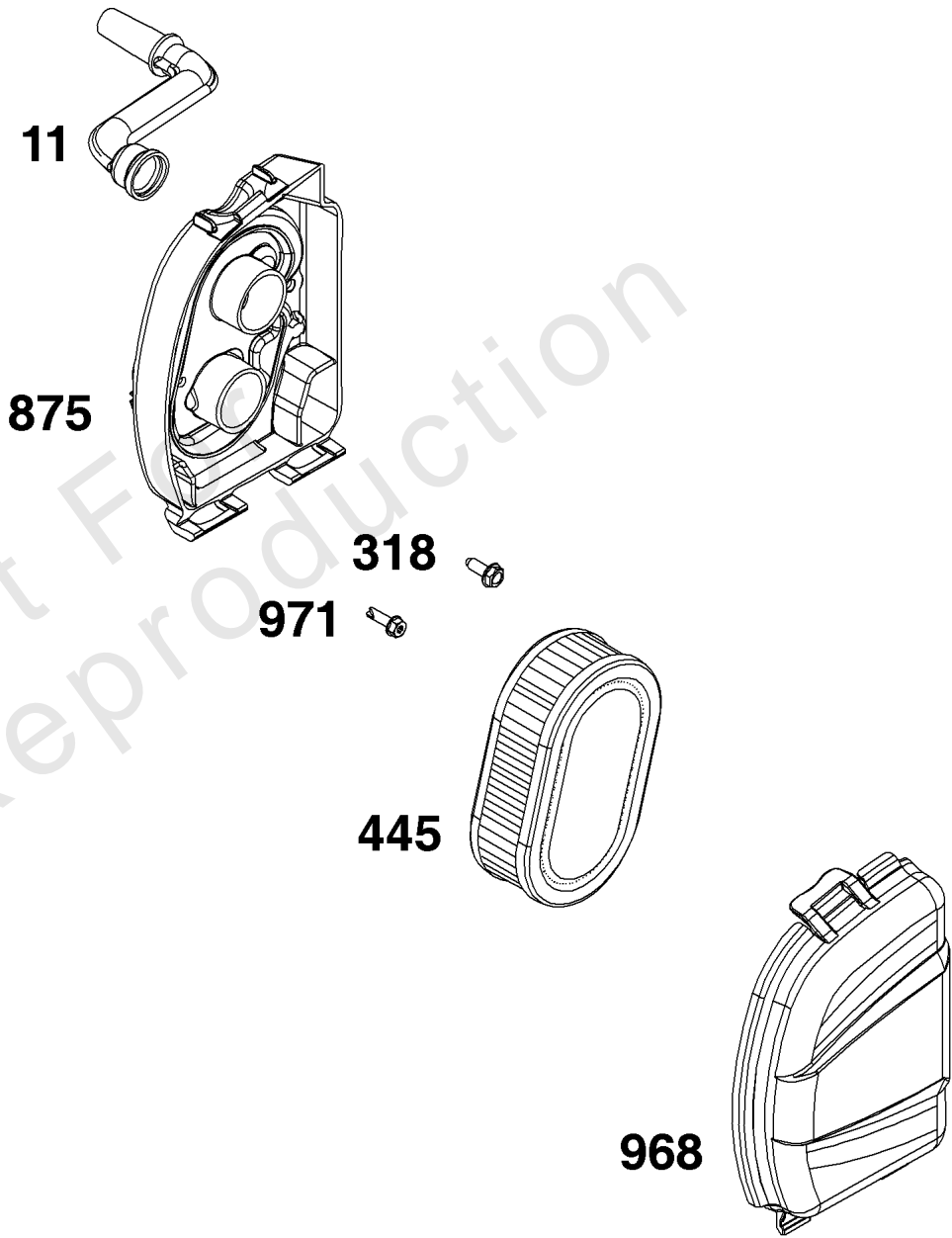


Parts Manual

Mfg. No: 093J02-0112-H1

Model Components	Page
Air Cleaner Group.	4
Blower Housing Group.	6
Carburetor Group.	8
Controls Group.	10
Crankcase Cover/Sump and Lubrication Group.	12
Crankshaft Group.	14
Cylinder Group.	16
Cylinder Head Group.	18
Exhaust Group.	20
Flywheel, Ignition, and Starter Group.	22
Fuel Supply Group.	24

Not For
Reproduction



Air Cleaner Group

REF NO	PART NO	QTY	DESCRIPTION
11	596501	1	Tube-Breather
318	793480	2	SCREW -(Mounting Bracket)
445	593260	1	FILTER, A/C Cartridge
875	595661	1	Base-Air Cleaner
968	595658	1	Cover-Air Cleaner
971	590552	2	SCREW -(Air Cleaner Base to Carburetor/Throttle Body)

Not For
Reproduction

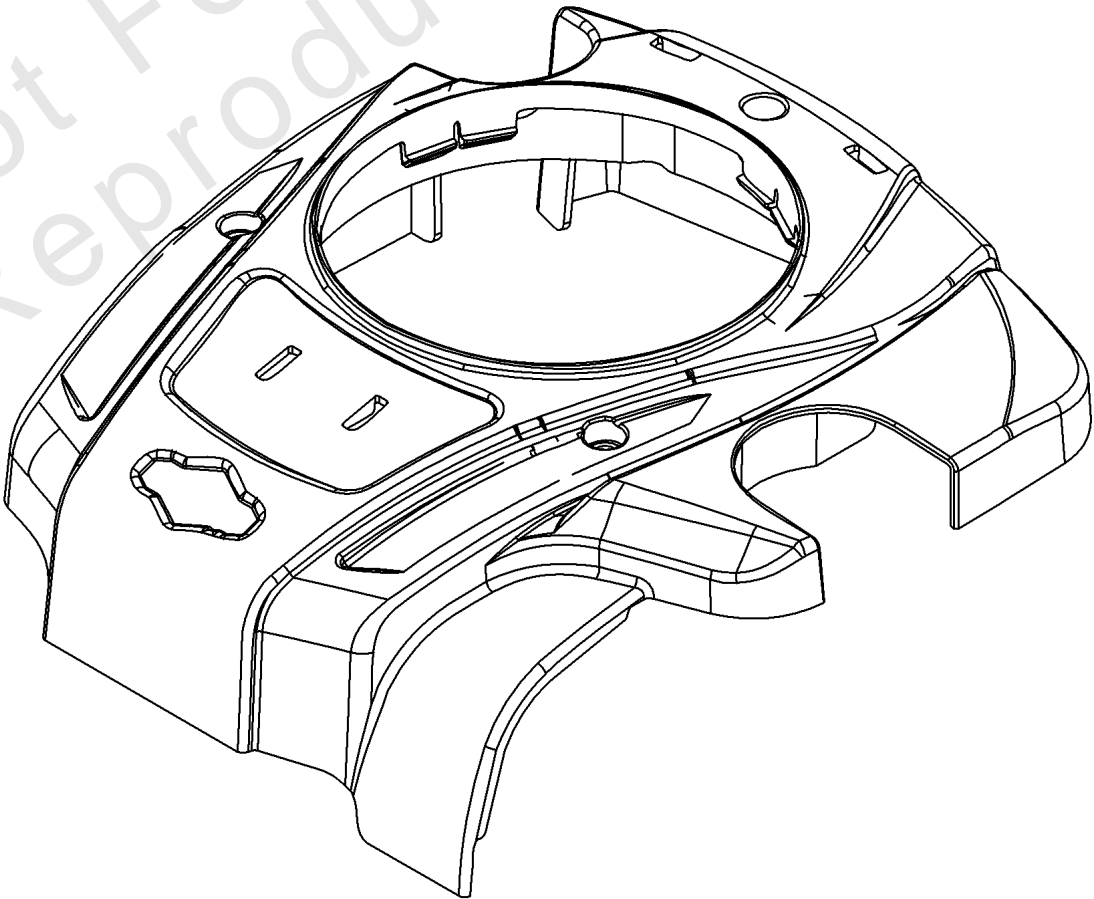
1036 

1319 

1319A 

305 

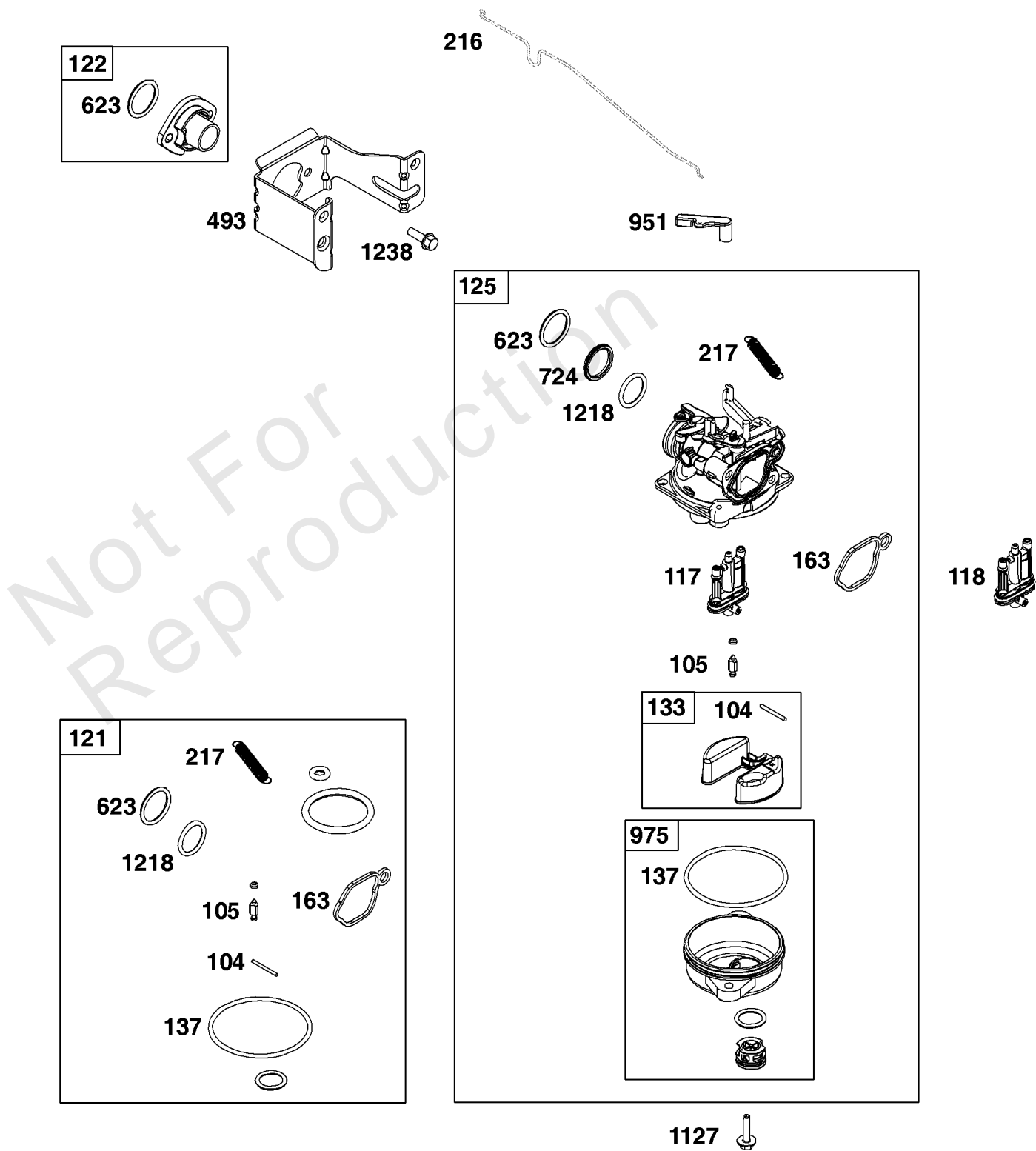
304



Blower Housing Group

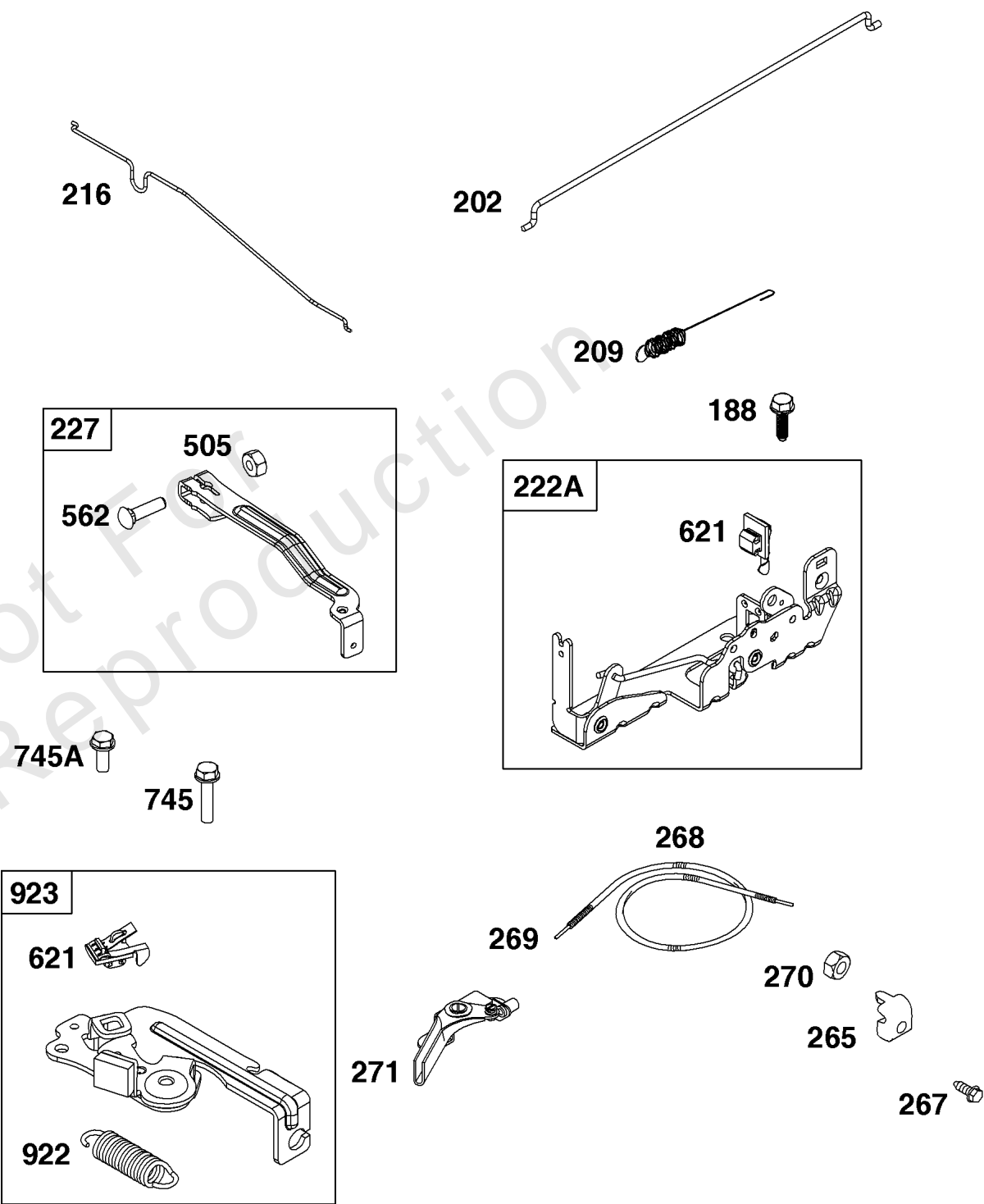
REF NO	PART NO	QTY	DESCRIPTION
304	593961	1	Housing-Blower
305	590586	3	SCREW -(Blower Housing)
1036	-----	1	LABEL, Emissions -(Available from a Briggs & Stratton Authorized Dealer)
1319	794467	1	LABEL, Warning -(REQUIRED When Replacing Parts With Warning Labels Affixed)
1319A	797669	1	LABEL, Warning -(REQUIRED When Replacing Parts With Warning Labels Affixed)

Not For
Reproduction



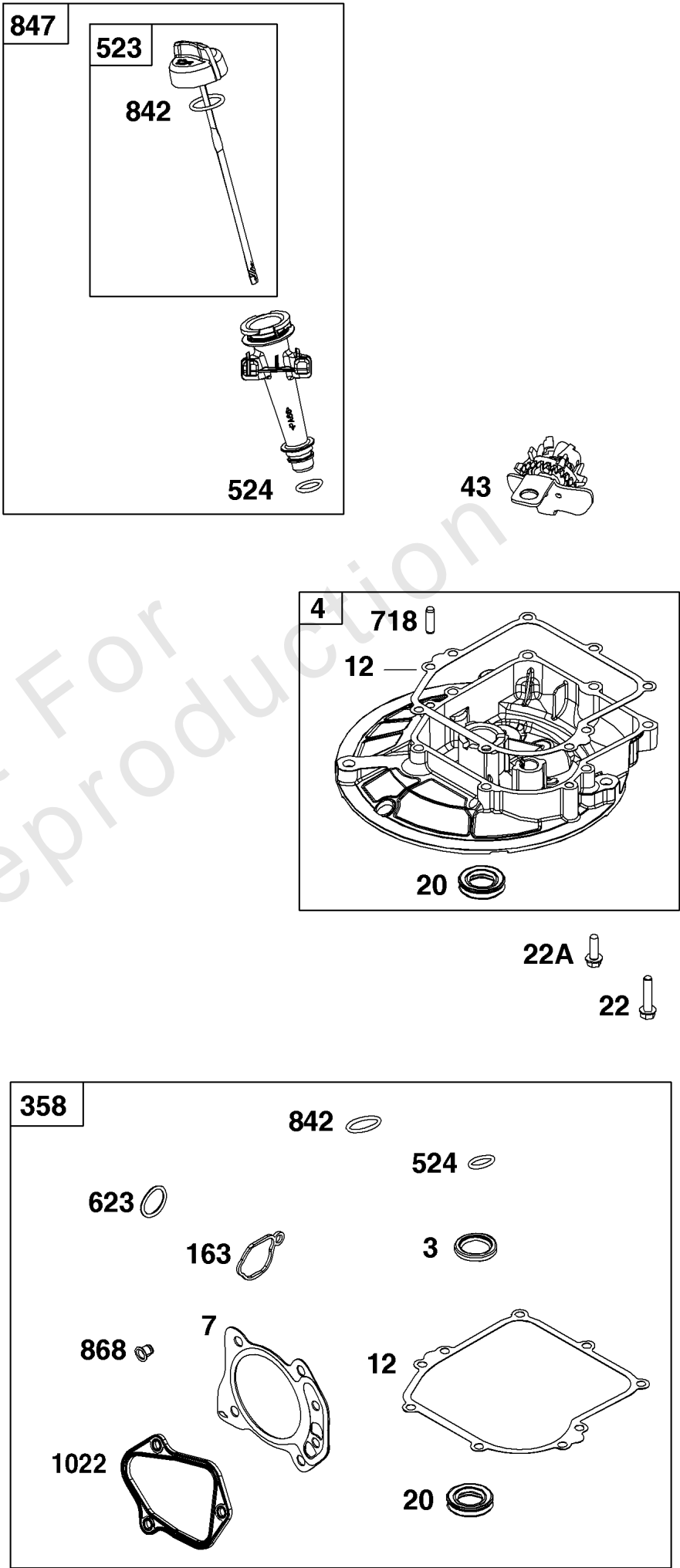
Carburetor Group

REF NO	PART NO	QTY	DESCRIPTION
104	590558	1	Pin-Float Hinge
105	594581	1	Valve-Float Needle
117	596524	1	Jet-Main -(Standard) -Used Before Code Date 18070100
117	-----	1	JET, Main -(Standard) (The Service Part is in Development) -Used After Code Date 18063000
118	596732	1	Jet-Main -(High Altitude) -Used Before Code Date 18070100
118	-----	1	JET, Main -(High Altitude) (The Service Part is in Development) -Used After Code Date 18063000
121	594636	1	KIT, Carburetor Overhaul -(Service Kits may include extra parts not specific to this engine.)
122	590549	1	Spacer-Carburetor
125	595489	1	Carburetor -Used Before Code Date 18070100
125	84001031	1	CARBURETOR -Used After Code Date 18063000
133	591120	1	Float-Carburetor
137	594633	1	Gasket-Float Bowl
163	799580	1	Gasket-Air Cleaner
216	-----	1	LINK, Choke -(Part information located in Controls Group.)
217	590740	1	Spring-Choke Return
493	593330	1	Bracket-Mounting
623	799581	1	Seal-O Ring -(Carburetor Spacer)
724	697478	1	Retainer-Seal
951	591104	1	Lever-Choke
975	594632	1	Bowl-Float
1127	590554	2	Screw -(Float Bowl to Carburetor Body)
1218	270344S	1	Seal-O Ring -(Carburetor)
1238	590562	2	SCREW -(Carburetor Spacer)



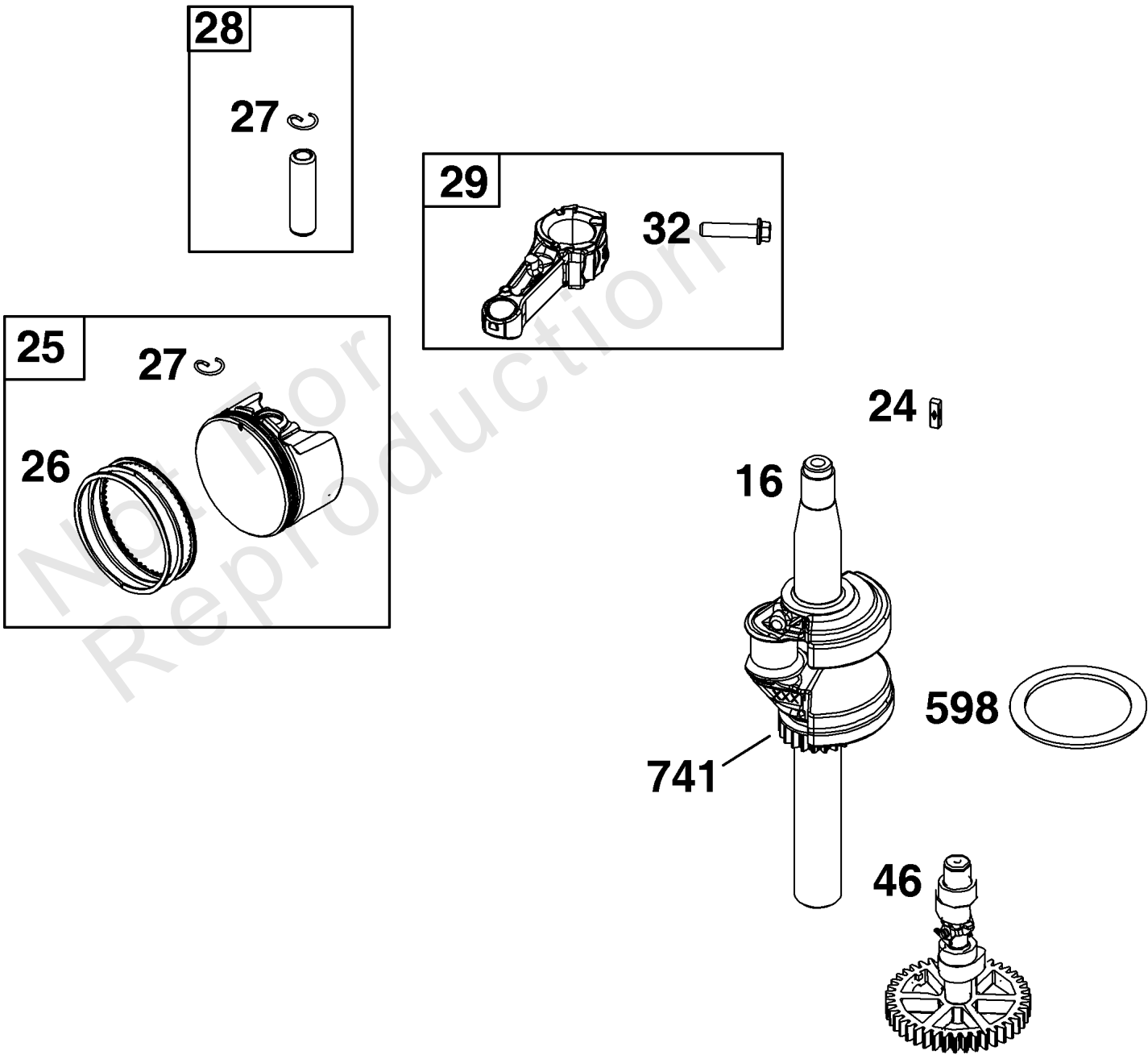
Controls Group

REF NO	PART NO	QTY	DESCRIPTION
188	793480	1	SCREW -(Control Bracket)
202	590517	1	Link-Mechanical Governor
209	590541	1	Spring-Governor -Used Before Code Date 17092700
209	597118	1	SPRING, Governor -Used After Code Date 17092600
216	590547	1	Link-Choke
222A	596458	1	Bracket-Control
227	590520	1	Lever-Governor Control
265	690798	1	Clamp-Casing
267	692577	1	Screw -(Casing Clamp)
268	691025	1	CASING, Control Wire
269	691026	1	WIRE, Control
270	691027	1	NUT -(Control Wire Casing)
271	691028	1	Lever-Control
505	793515	1	NUT -(Governor Control Lever)
562	793514	1	Bolt -(Governor Control Lever)
621	692310	1	Switch-Stop
745	691146	1	Screw -(Brake)
745A	690859	1	Screw -(Brake)
922	692135	1	Spring-Brake
923	691487	1	Brake



Crankcase Cover/Sump and Lubrication Group

REF NO	PART NO	QTY	DESCRIPTION
3	-----	1	SEAL, Oil -(Part information located in Cylinder Group.)
4	594101	1	Sump-Engine
7	-----	1	GASKET, Cylinder Head -(Part information located in Cylinder Head Group.)
12	799587	1	Gasket-Crankcase
20	399781S	1	Seal-Oil -(PTO Side)
22	692551	6	Screw -(Crankcase Cover/Sump)
22A	590763	1	Screw -(Crankcase Cover/Sump)
43	594560	1	Slinger-Governor/Oil
163	-----	1	GASKET, Air Cleaner -(Part information located in Carburetor Group.)
358	597186	1	GASKET SET, Engine -(Service Kits may include extra parts not specific to this engine.) -Used Before Code Date 18070100
358	84001273	1	GASKET SET, Engine -(Service Kits may include extra parts not specific to this engine.) -Used After Code Date 18063000
523	796503	1	DIPSTICK
524	691876	1	Seal-O Ring -(Dipstick Tube)
623	-----	1	SEAL, O-Ring -(Part information located in Carburetor Group.)
718	690959	2	PIN, Locating
842	691031	1	SEAL, O-Ring -(Dipstick Cap)
847	590572	1	Dipstick/Tube Assembly
868	-----	1	SEAL, Valve -(Part information located in Cylinder Head Group.)
1022	-----	1	GASKET, Rocker Cover -(Part information located in Cylinder Head Group.)



Crankshaft Group

REF NO	PART NO	QTY	DESCRIPTION
16	595024	1	Crankshaft
24	222698S	1	KEY, Flywheel
25	595502	1	Piston Assembly
26	592660	1	Ring Set
27	691588	1	Lock-Piston Pin
28	298909	1	Pin-Piston
29	594089	1	Rod-Connecting
32	691664	2	Screw -(Connecting Rod)
46	592968	1	Camshaft
598	592587	1	Shims-End Play Kit -(Crankshaft or Camshaft Bearing)
741	594105	1	Gear-Timing

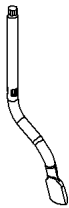
Not For
Reproduction

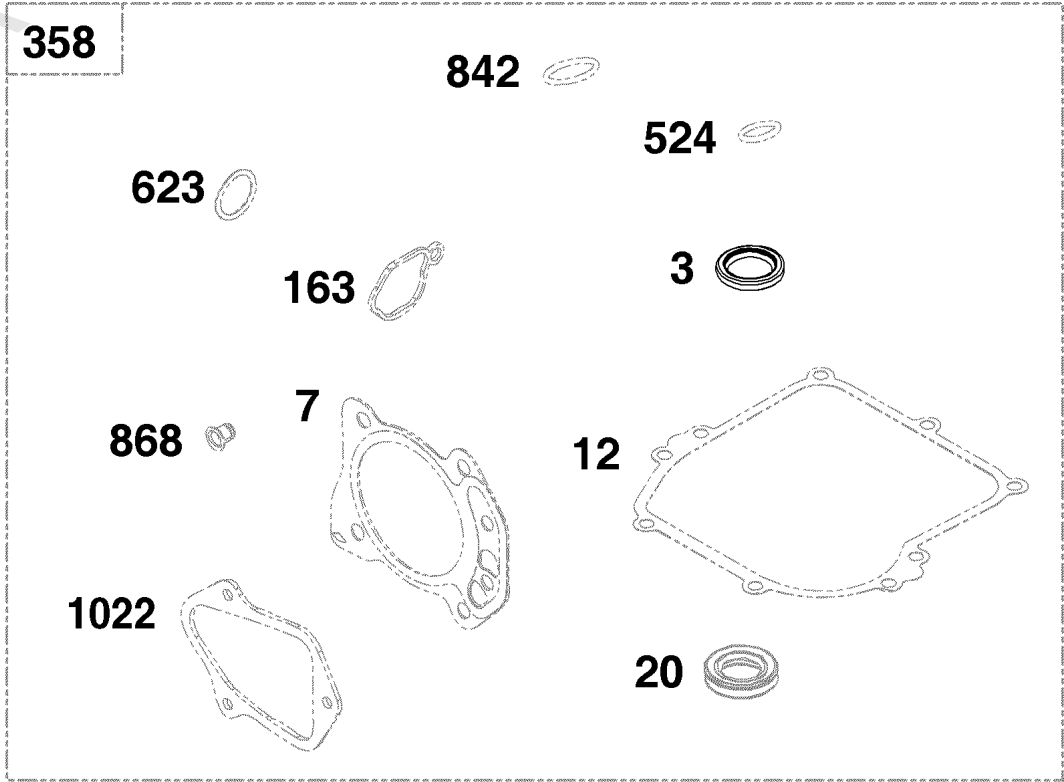
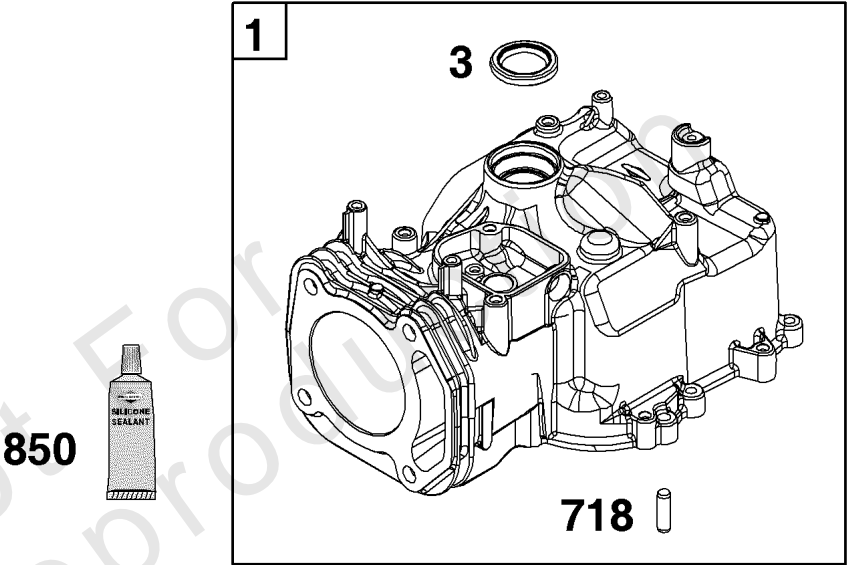
615 

404 

1264 

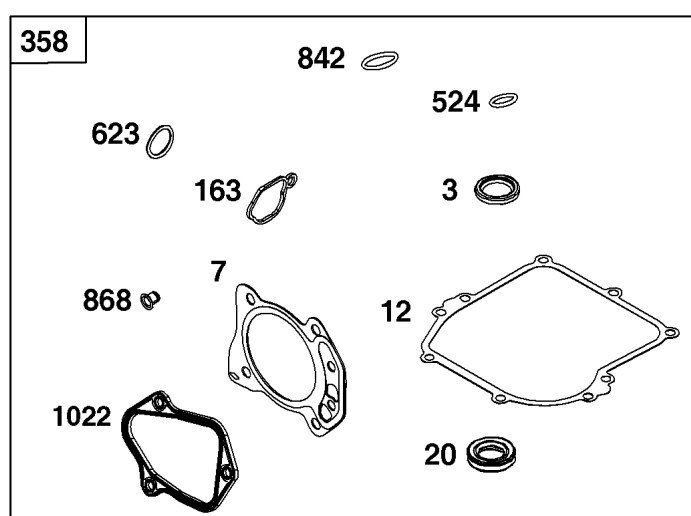
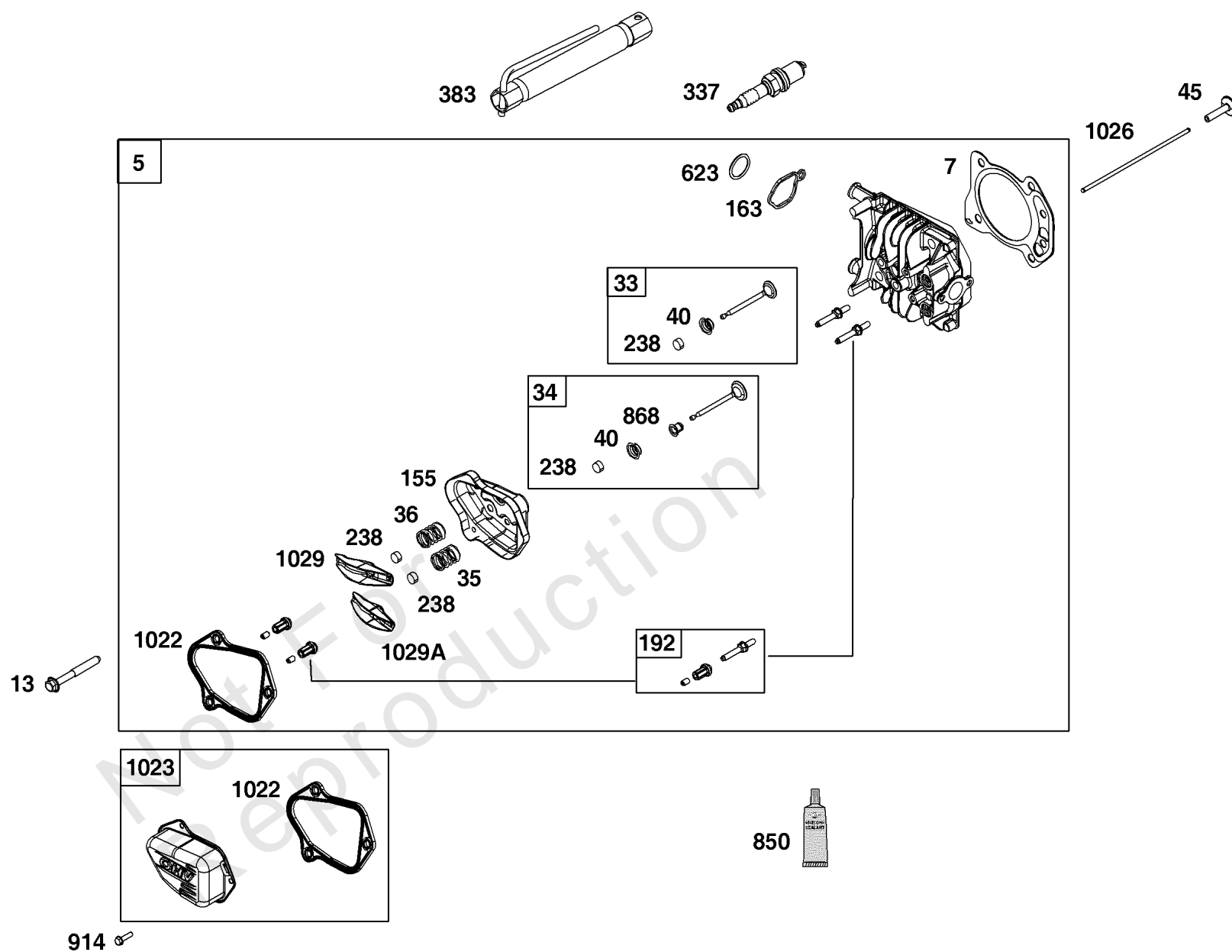
1263 

616 



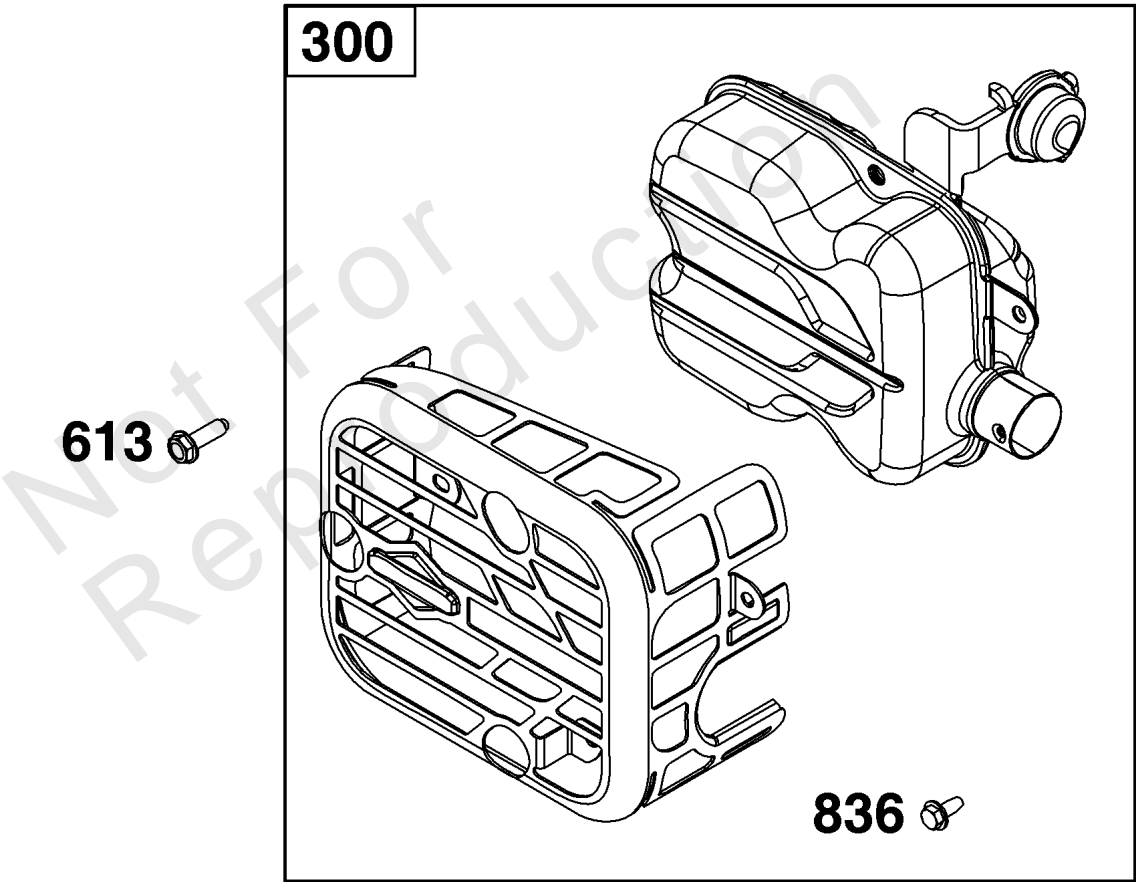
Cylinder Group

REF NO	PART NO	QTY	DESCRIPTION
1	592359	1	Cylinder Assembly
3	299819S	1	SEAL, Oil -(Magneto Side)
7	-----	1	GASKET, Cylinder Head -(Part information located in Cylinder Head Group.)
12	-----	1	GASKET, Crankcase -(Part information located in Crankcase Cover/Sump and Lubrication Group.)
20	-----	1	SEAL, Oil -(Part information located in Crankcase Cover/Sump and Lubrication Group.)
163	-----	1	GASKET, Air Cleaner -(Part information located in Carburetor Group.)
358	-----	1	GASKET SET, Engine -(Part information located in Crankcase Cover/Sump and Lubrication Group.)
404	690272	1	WASHER -(Governor Crank)
524	-----	1	SEAL, O-Ring -(Part information located in Crankcase Cover/Sump and Lubrication Group.)
615	690340	1	RETAINER, Governor Shaft
616	590516	1	CRANK, Governor
623	-----	1	SEAL, O-Ring -(Part information located in Carburetor Group.)
718	690959	2	PIN, Locating
842	-----	1	SEAL, O-Ring -(Part information located in Crankcase Cover/Sump and Lubrication Group.)
850	-----	1	SEALANT, Liquid -(Part information located in Cylinder Head Group.)
868	-----	1	SEAL, Valve -(Part information located in Cylinder Head Group.)
1022	-----	1	GASKET, Rocker Cover -(Part information located in Cylinder Head Group.)
1263	697124	1	REED, Breather
1264	793453	1	SCREW -(Breather Reed)



Cylinder Head Group

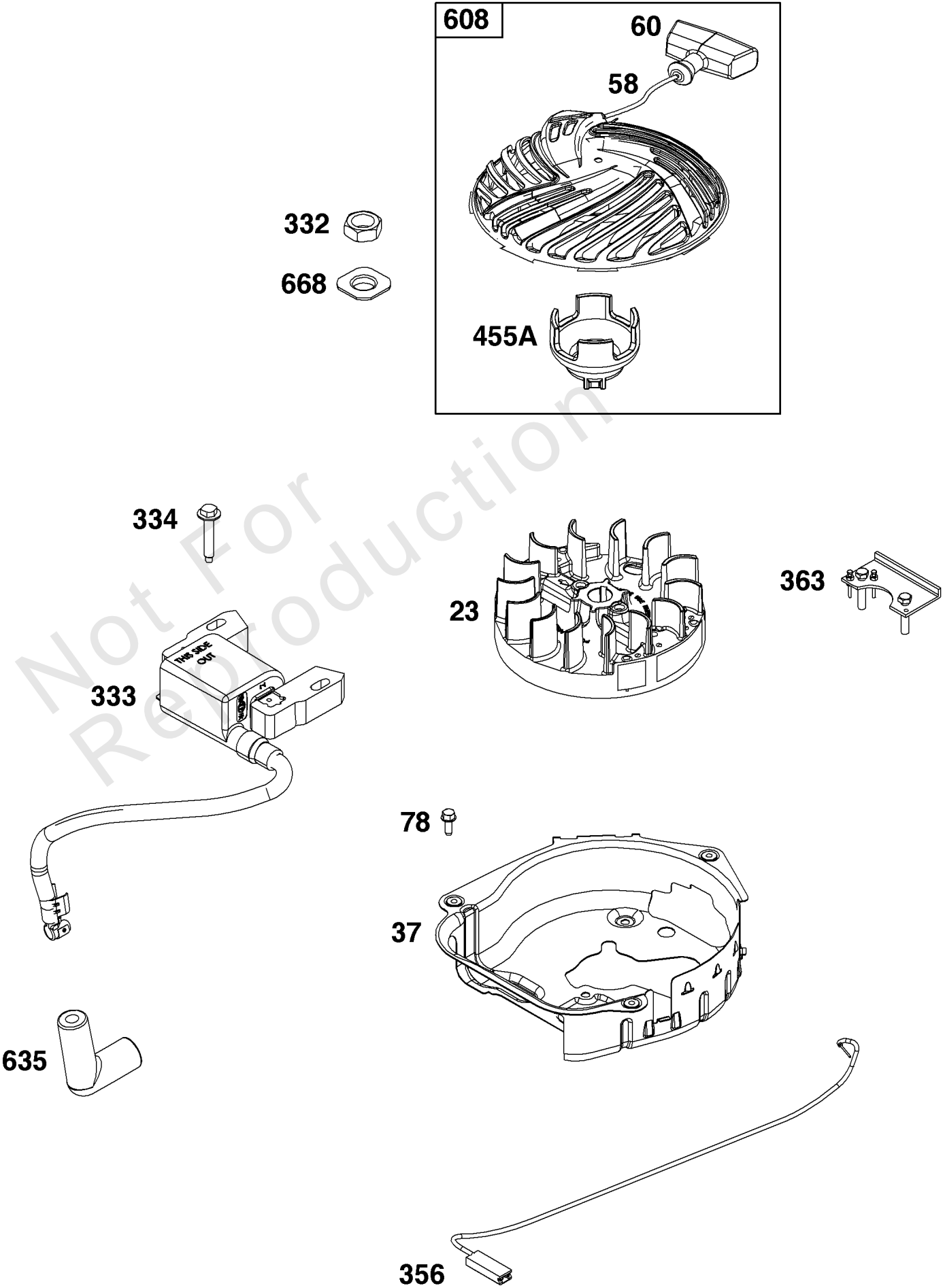
REF NO	PART NO	QTY	DESCRIPTION
3	-----	1	SEAL, Oil -(Part information located in Cylinder Group.)
5	595351	1	Head-Cylinder -Used Before Code Date 18070100
5	84001270	1	HEAD, Cylinder -Used After Code Date 18063000
7	592358	1	Gasket-Cylinder Head
12	-----	1	GASKET, Crankcase -(Part information located in Crankcase Cover/Sump and Lubrication Group.)
13	590512	4	Screw -(Cylinder Head)
20	-----	1	SEAL, Oil -(PTO Side) (Part information located in Crankcase Cover/Sump and Lubrication Group.)
33	590531	1	Valve-Exhaust
34	590530	1	Valve-Intake -Used Before Code Date 18070100
34	-----	1	VALVE, Intake -(The Service Part is in Development) -Used After Code Date 18063000
35	590532	1	Spring-Valve -(Intake)
36	590532	1	Spring-Valve -(Exhaust)
40	590528	2	Retainer-Valve
45	590514	2	Tappet-Valve
155	590529	1	Plate-Cylinder Head
163	-----	1	GASKET, Air Cleaner -(Part information located in Carburetor Group.)
192	590535	2	Adjuster-Rocker Arm
238	590533	2	Cap-Valve
337	797434	1	Plug-Spark
358	-----	1	GASKET SET, Engine -(Part information located in Crankcase Cover/Sump and Lubrication Group.)
383	19576S	1	WRENCH, Spark Plug
524	-----	1	SEAL, O-Ring -(Part information located in Crankcase Cover/Sump and Lubrication Group.)
623	-----	1	SEAL, O-Ring -(Part information located in Carburetor Group.)
842	-----	1	SEAL, O-Ring -(Part information located in Crankcase Cover/Sump and Lubrication Group.)
850	100106	1	SEALANT, Liquid
868	590534	1	Seal-Valve -Used Before Code Date 18070100
868	84001271	1	SEAL, Valve -Used After Code Date 18063000
914	591103	3	Screw -(Rocker Cover)
1022	595341	1	Gasket-Rocker Cover
1023	595349	1	Cover-Rocker
1026	590515	2	Rod-Push
1029	590526	1	Arm-Rocker
1029A	590527	1	Arm-Rocker



Exhaust Group

REF NO	PART NO	QTY	DESCRIPTION
300	595516	1	Muffler
613	590562	2	SCREW -(Muffler)
836	690661	3	SCREW -(Muffler Guard)

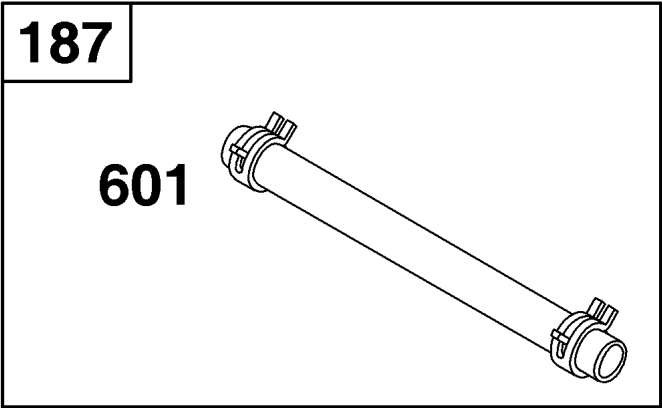
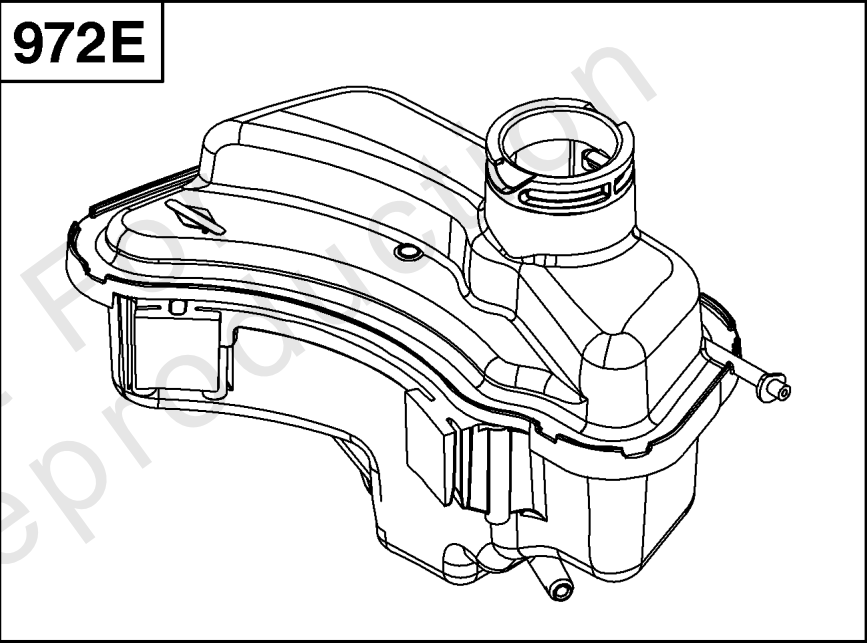
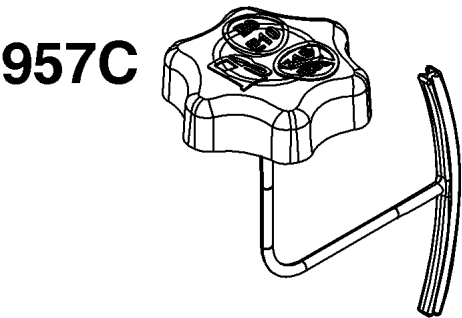
Not For
Reproduction



Flywheel, Ignition, and Starter Group

REF NO	PART NO	QTY	DESCRIPTION
23	590544	1	Flywheel
37	594729	1	Guard-Flywheel
58	591108	1	Rope-Starter
60	691915	1	GRIP, Starter Rope
78	793480	5	SCREW -(Flywheel Guard)
332	690662	1	Nut -(Flywheel)
333	595009	1	Armature-Magneto
334	691061	2	SCREW -(Magneto Armature)
356	595018	1	Wire-Stop
363	19619	1	PULLER, Flywheel
455A	593960	1	Cup-Flywheel
608	593959	1	Starter-Rewind
635	692076	1	BOOT, Spark Plug
668	590546	1	Spacer

Not For
Reproduction



Fuel Supply Group

REF NO	PART NO	QTY	DESCRIPTION
187	791766	1	LINE, Fuel
601	791850	1	CLAMP, Hose
957C	596250	1	Cap-Fuel Tank
972E	596251	1	Tank-Fuel

Not For
Reproduction

